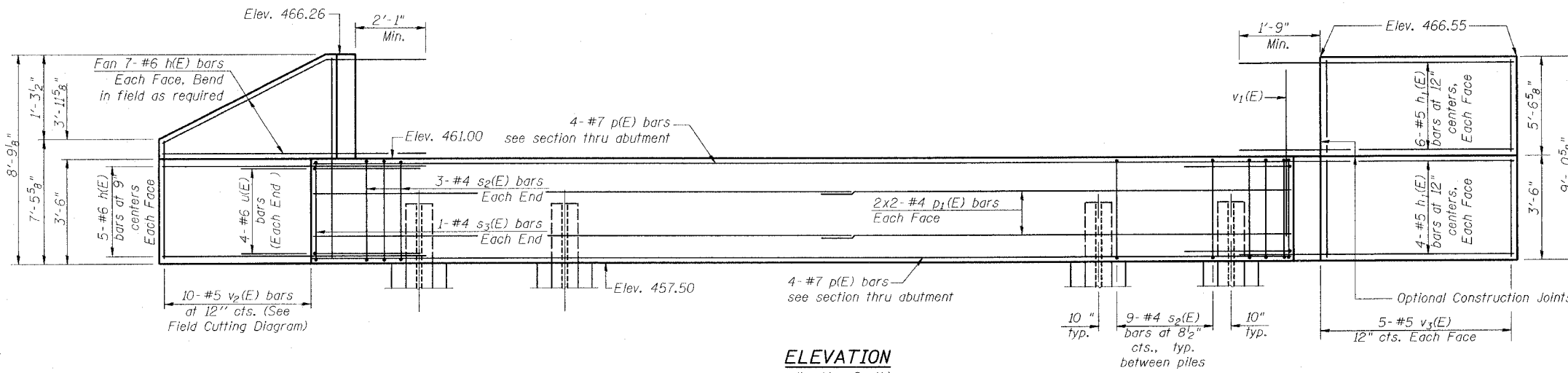


STATE OF ILLINOIS
DEPARTMENT OF TRANSPORTATION

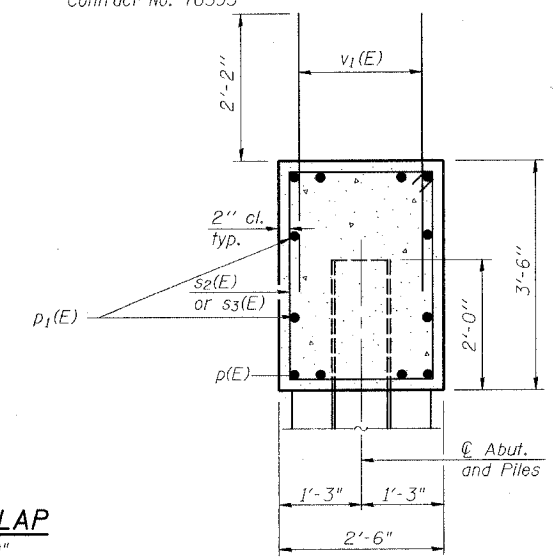
F.A.P. ROUTE	SECTION	COUNTY	TOTAL SHEETS	SHEET NO.
FAP 805	147BR	ST. CLAIR	52	34
FED. ROAD DIST. NO. 1		ILLINOIS	FED. AID PROJECT	

SHEET NO. 14
24 SHEETS

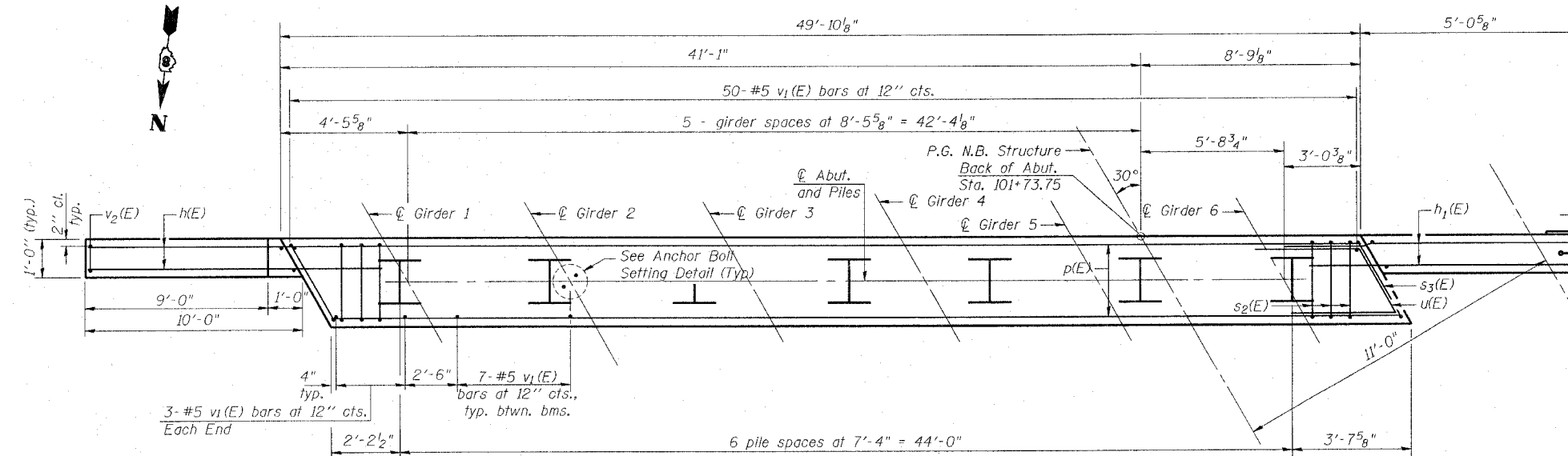
Contract No. 76393



ELEVATION
(Looking South)



SEC. THRU ABUT.



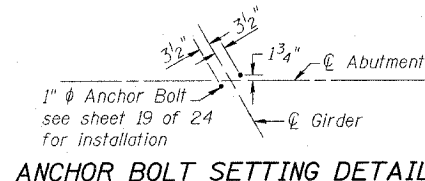
PLAN

MIN. BAR LAP
#4 Bars 1'-10"

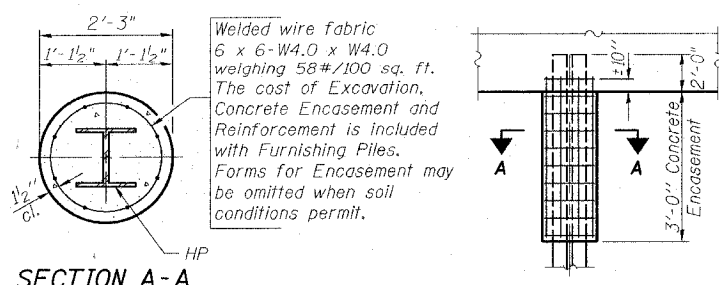
PILE DATA
Type: HP 14x73
Capacity: Drive to Refusal
Est. Length: 86'
No. Required: 6+1 Test Pile

BILL OF MATERIAL

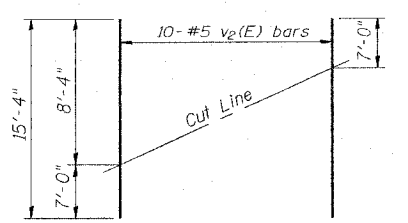
Bar	No.	Size	Length	Shape
h(E)	24	#6	12'-0"	
h1(E)	20	#5	6'-8"	
p(E)	8	#7	49'-6"	
p1(E)	8	#4	25'-8"	
s2(E)	60	#4	11'-5"	□
s3(E)	2	#4	12'-1"	□
u(E)	8	#6	9'-6"	∇
v1(E)	91	#5	4'-4"	
v2(E)	10	#5	15'-4"	
v3(E)	10	#5	8'-8"	
Concrete Structures	Cu. Yd.	20.7		
Reinforcement Bars, Epoxy Coated	Pound	2770		
Structure Excavation	Cu. Yd.	175		
Steel Piles HP 14x73	Ln. Ft.	516		
Test Pile HP 14x73	Each	1		



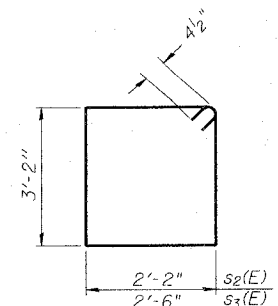
ANCHOR BOLT SETTING DETAIL



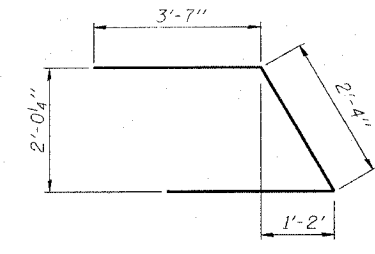
SECTION A-A
TYPICAL HP PILE ENCASEMENT DETAIL



FIELD CUTTING DIAGRAM
Order v2(E) full length. Cut as shown and use half of bars in each face.



BARs s2(E) & s3(E)



BAR u(E)

Notes:
Four steps monolithically with cap.
Reinforcement bars designated (E) shall be epoxy coated.
Space reinforcement in cap to miss anchor bolts.
Bars designated thus 2x2-#4 etc. indicates 2 lines of bars with 2 lengths per line

ILLINOIS ROUTE 161 OVER
TRIBUTARY TO SCHOENBERGER CREEK
F.A.P. ROUTE 805 - SECTION 147BR
ST. CLAIR COUNTY
STATION 101+03.82
STRUCTURE NO. 082-0102 (N.B.)
STRUCTURE NO. 082-0103 (S.B.)

NB STRUCTURE, SOUTH ABUTMENT

FILE LOCATION: #FILE#
DATE: #DATE#
TIME: #TIME#
PLOTTED BY: #USER#

THOUVENOT, WADE & MOERCHEN, INC.



DESIGNED	ALN, BWP
CHECKED	ALN, BWP
DRAWN	JMI, DEH
CHECKED	ALN, BWP