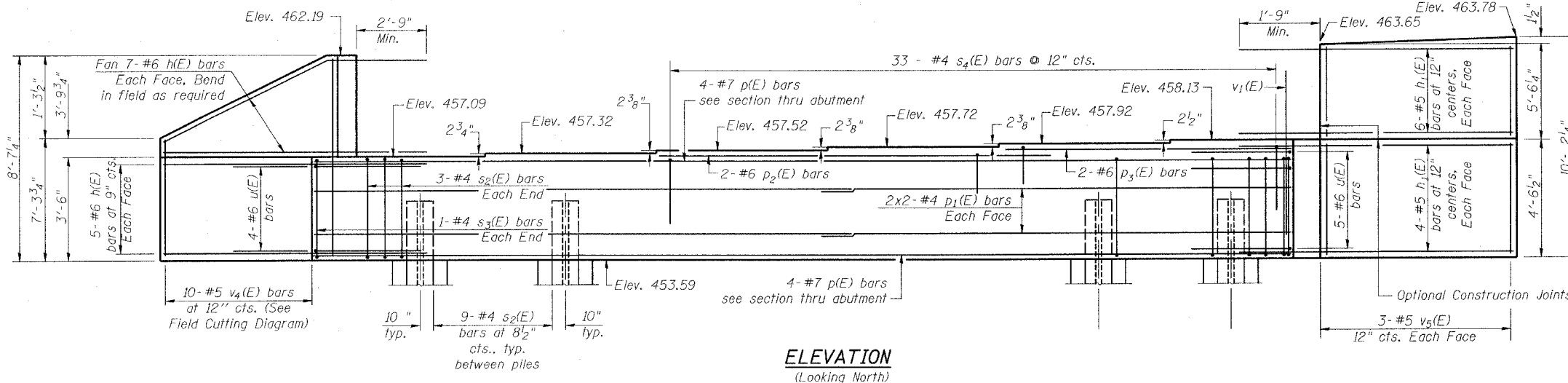
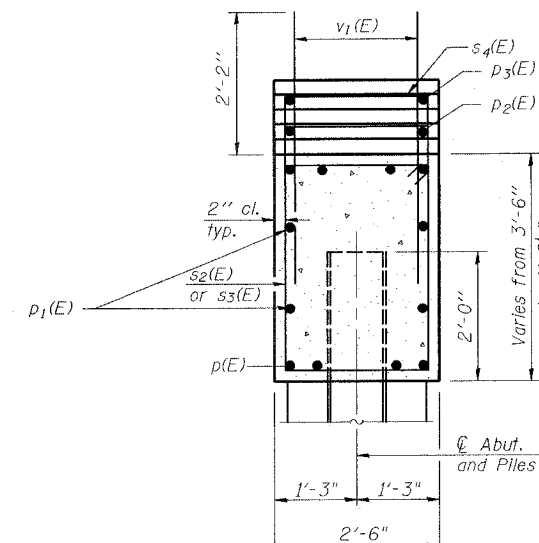


STATE OF ILLINOIS
DEPARTMENT OF TRANSPORTATION

F.A.P. ROUTE	SECTION	COUNTY	TOTAL SHEETS	SHEET NO.	SHEET NO. 15 24 SHEETS
FAP 805	147BR	ST. CLAIR	52	35	
FED. ROAD DIST. NO. 1	ILLINOIS	FED. AID PROJECT-	Contract No. 76393		



ELEVATION
(Looking North)



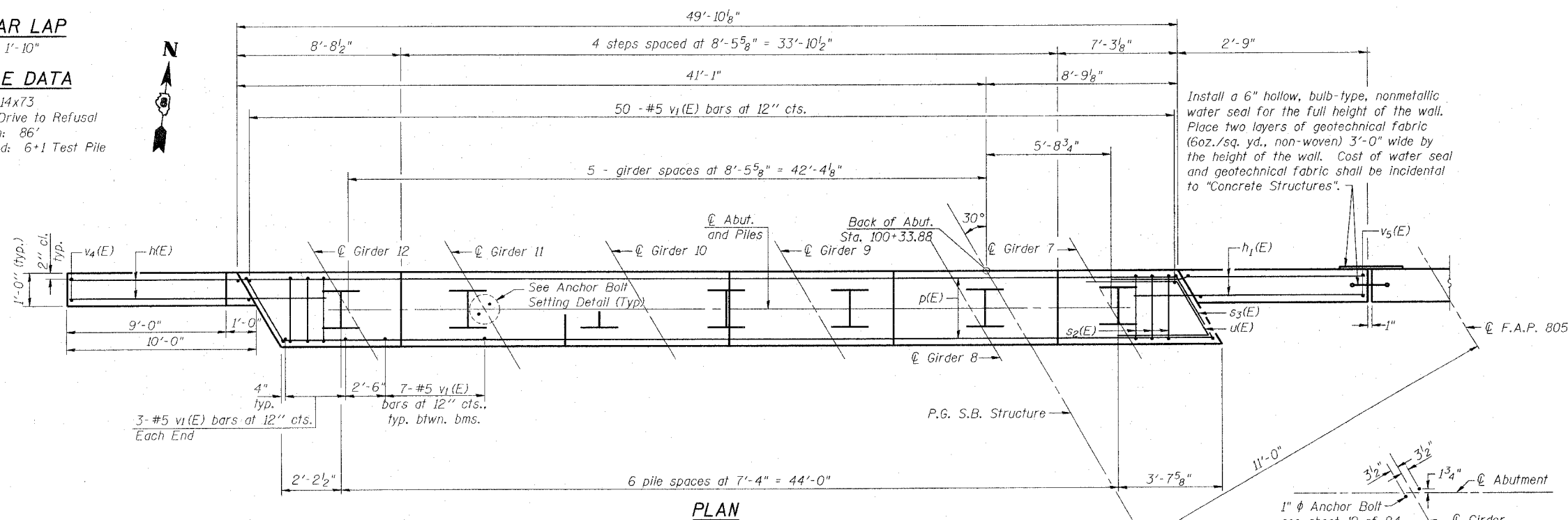
SEC. THRU ABUT.

MIN. BAR LAP

#4 Bars 1'-10"

PILE DATA

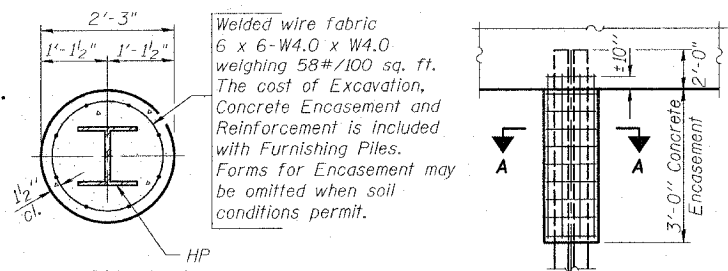
Type: HP 14x73
Capacity: Drive to Refusal
Est. Length: 86'
No. Required: 6+1 Test Pile



PLAN

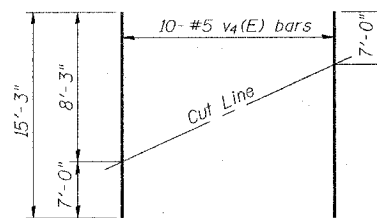
ANCHOR BOLT SETTING DETAIL

1" φ Anchor Bolt - see sheet 19 of 24.



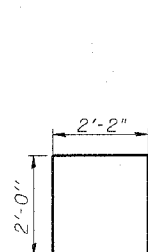
SECTION A-A

TYPICAL HP PILE ENCASEMENT DETAIL

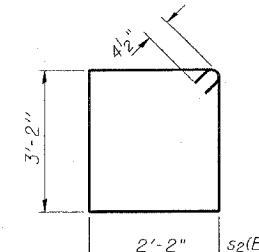


FIELD CUTTING DIAGRAM

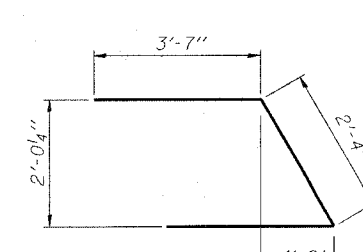
Order v4(E) full length. Cut as shown and use half of bars in each face.



BAR S4(E)



BARS S2(E) & S3(E)



BAR U(E)

BILL OF MATERIAL

Bar	No.	Size	Length	Shape
h(E)	24	#6	12'-0"	—
h1(E)	20	#5	4'-5"	—
p(E)	8	#7	49'-6"	—
p1(E)	8	#4	25'-8"	—
p2(E)	2	#6	17'-0"	—
p3(E)	2	#6	15'-4"	—
s2(E)	60	#4	11'-5"	□
s3(E)	2	#4	12'-1"	□
s4(E)	33	#4	6'-2"	□
u(E)	9	#6	9'-6"	—
v1(E)	91	#5	4'-4"	—
v4(E)	10	#5	15'-3"	—
v5(E)	6	#5	9'-10"	—
Concrete Structures		Cu. Yd.	22.4	
Reinforcement Bars, Epoxy Coated		Pound	2940	
Structure Excavation		Cu. Yd.	180	
Steel Piles HP 14x73		Ln. Ft.	516	
Test Pile HP 14x73		Each	1	

Notes:

Pour steps monolithically with cap.

Reinforcement bars designated (E) shall be epoxy coated.

Space reinforcement in cap to miss anchor bolts.

Bars designated thus 2x2-#4 etc. indicates 2 lines of bars with 2 lengths per line

ILLINOIS ROUTE 161 OVER
TRIBUTARY TO SCHOENBERGER CREEK
F.A.P. ROUTE 805 - SECTION 147BR
ST. CLAIR COUNTY
STATION 101+03.82
STRUCTURE NO. 082-0102 (N.B.)
STRUCTURE NO. 082-0103 (S.B.)

SB STRUCTURE, NORTH ABUTMENT

PLOTTED BY: BUSBERG

TIME: 8:15 AM

DATE: 8/24/88

FILE LOCATION: SFILES

THOUVENOT, WADE & MOERCHEN, INC.



DESIGNED -	ALN, BWP
CHECKED -	ALN, BWP
DRAWN -	JMI, DEH
CHECKED -	ALN, BWP