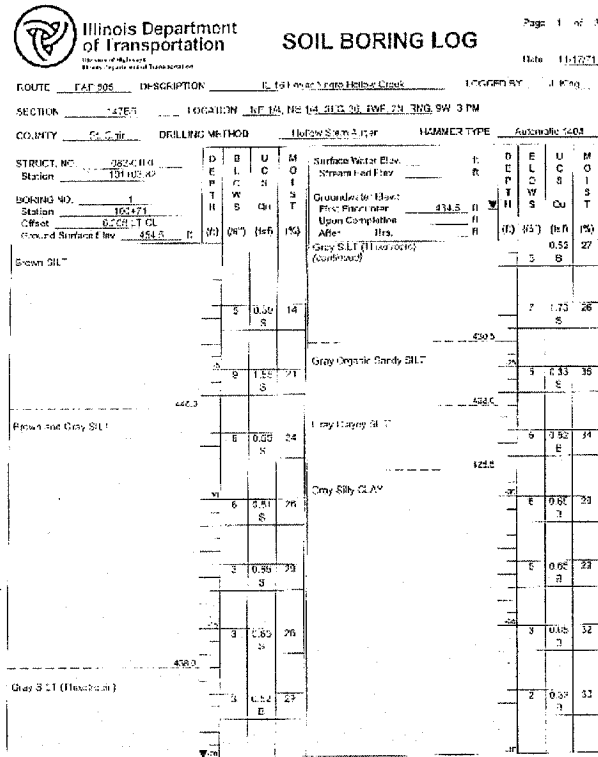


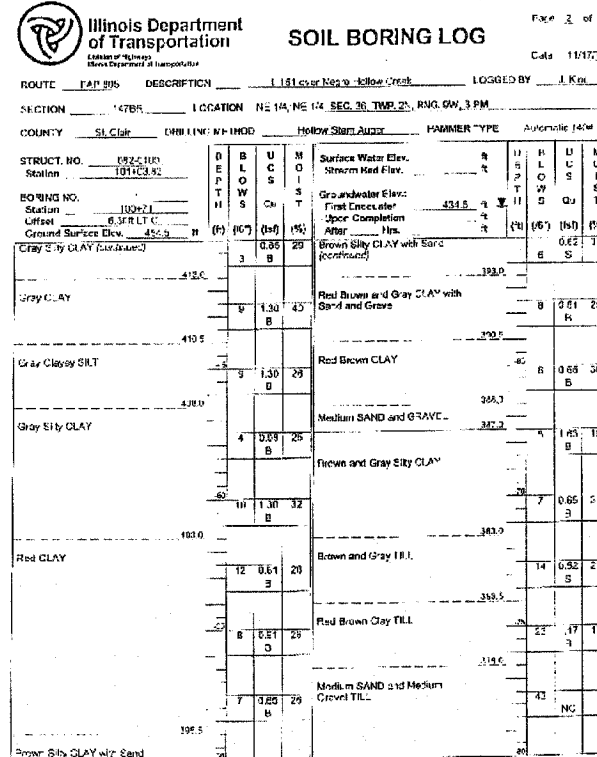
STATE OF ILLINOIS
DEPARTMENT OF TRANSPORTATION

F.A.P. ROUTE	SECTION	COUNTY	TOTAL SHEETS	SHEET NO.
FAP 805	147BR	ST. CLAIR	52	40
FED. ROAD DIST. NO. 1		ILLINOIS	FED. AID PROJECT	

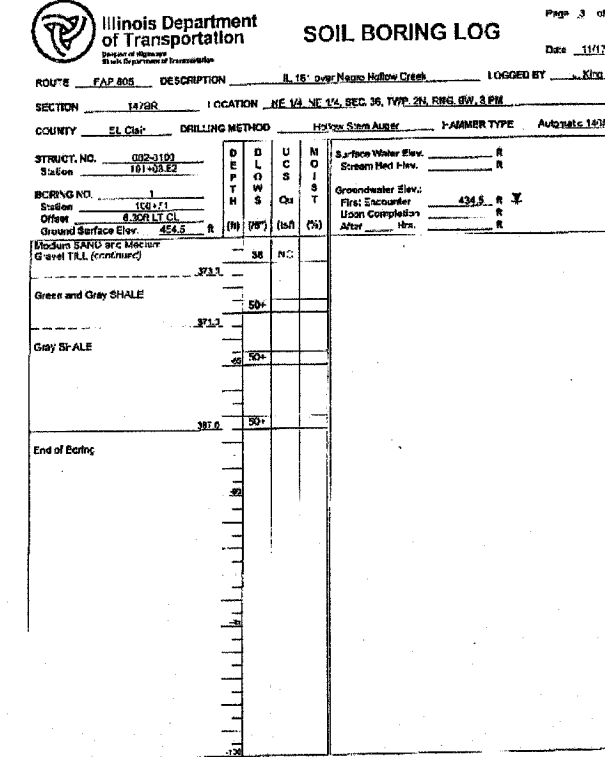
Contract No. 76393



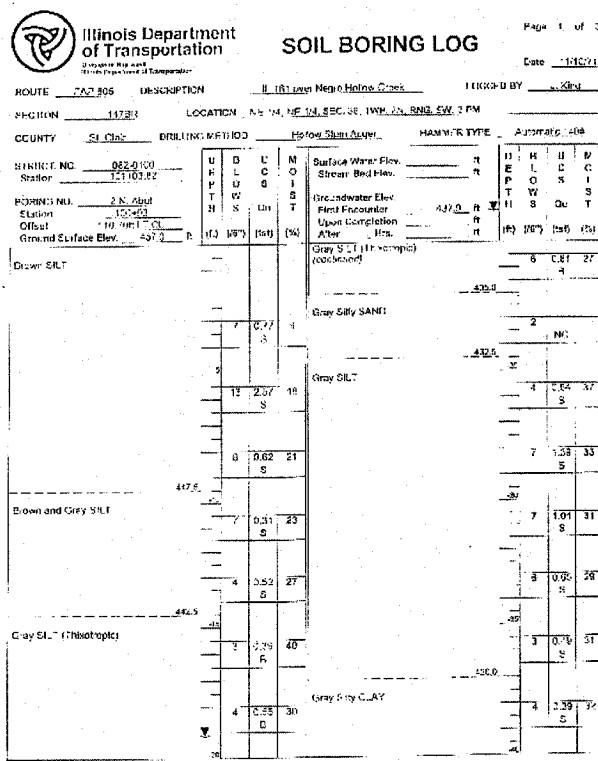
The Unconfined Compressive Strength (UCS) Failure Mode is Indicated by (B-Bulge, S-Shear, P-Parabolometric). The SPT (N value) is the sum of the last two blow values in each sampling zone (ASTM D 1586). RBS, from 137 (Rev. 8-92)



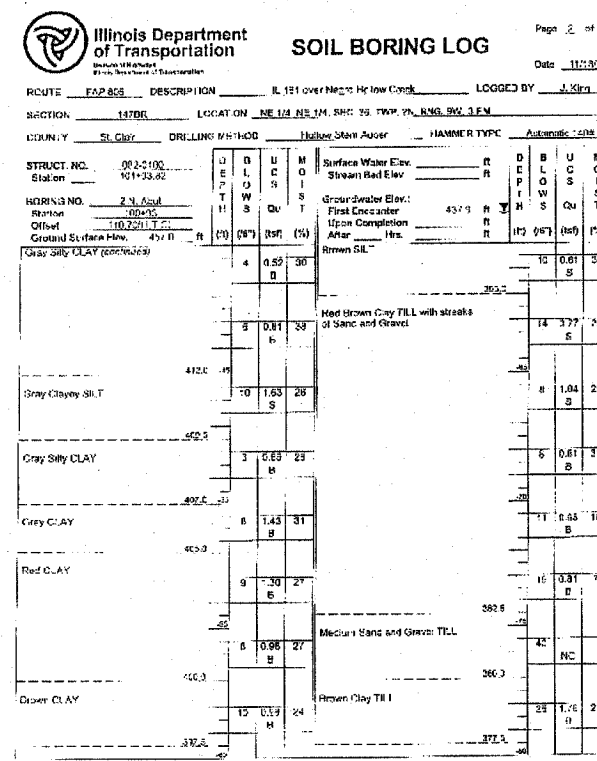
The Unconfined Compressive Strength (UCS) Failure Mode is Indicated by (B-Bulge, S-Shear, P-Parabolometric). The SPT (N value) is the sum of the last two blow values in each sampling zone (ASTM D 1586). RBS, from 137 (Rev. 8-92)



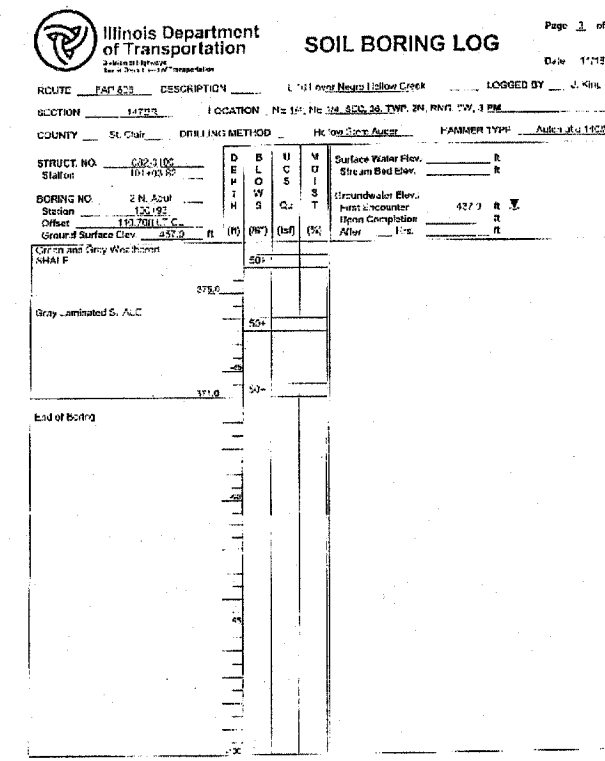
The Unconfined Compressive Strength (UCS) Failure Mode is Indicated by (B-Bulge, S-Shear, P-Parabolometric). The SPT (N value) is the sum of the last two blow values in each sampling zone (ASTM D 1586). RBS, from 137 (Rev. 8-92)



The Unconfined Compressive Strength (UCS) Failure Mode is Indicated by (B-Bulge, S-Shear, P-Parabolometric). The SPT (N value) is the sum of the last two blow values in each sampling zone (ASTM D 1586). RBS, from 137 (Rev. 8-92)



The Unconfined Compressive Strength (UCS) Failure Mode is Indicated by (B-Bulge, S-Shear, P-Parabolometric). The SPT (N value) is the sum of the last two blow values in each sampling zone (ASTM D 1586). RBS, from 137 (Rev. 8-92)



The Unconfined Compressive Strength (UCS) Failure Mode is Indicated by (B-Bulge, S-Shear, P-Parabolometric). The SPT (N value) is the sum of the last two blow values in each sampling zone (ASTM D 1586). RBS, from 137 (Rev. 8-92)

DESIGNED ALN
CHECKED BWP
DRAWN DEH
CHECKED ALN

ILLINOIS ROUTE 161 OVER
TRIBUTARY TO SCHOENBERGER CREEK
F.A.P. ROUTE 805 - SECTION 147BR
ST. CLAIR COUNTY
STATION 101+03.82
STRUCTURE NO. 082-0102 (N.B.)
STRUCTURE NO. 082-0103 (S.B.)

BORING LOGS

FILE LOCATION: \$FILES\$
DATE: \$DATES\$
TIME: \$TIME\$
PLOTTED BY: \$USERS\$