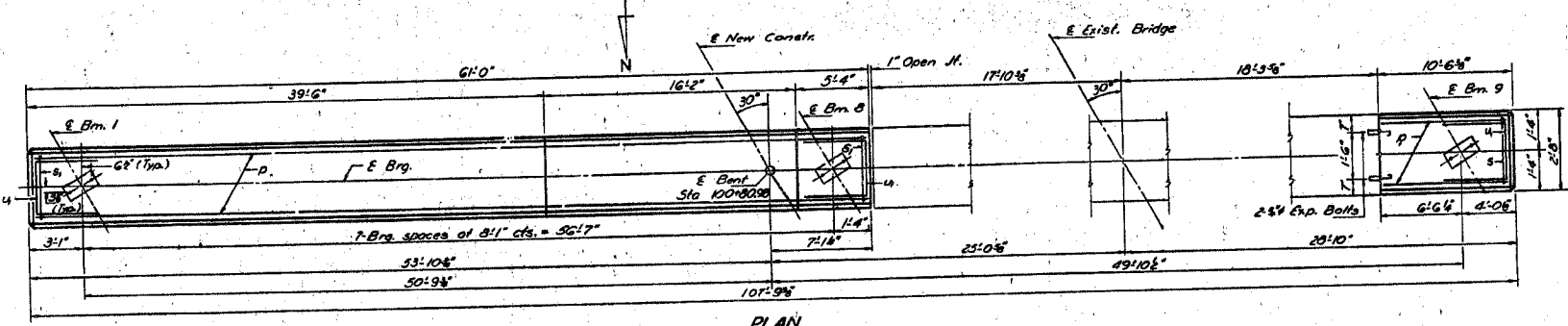
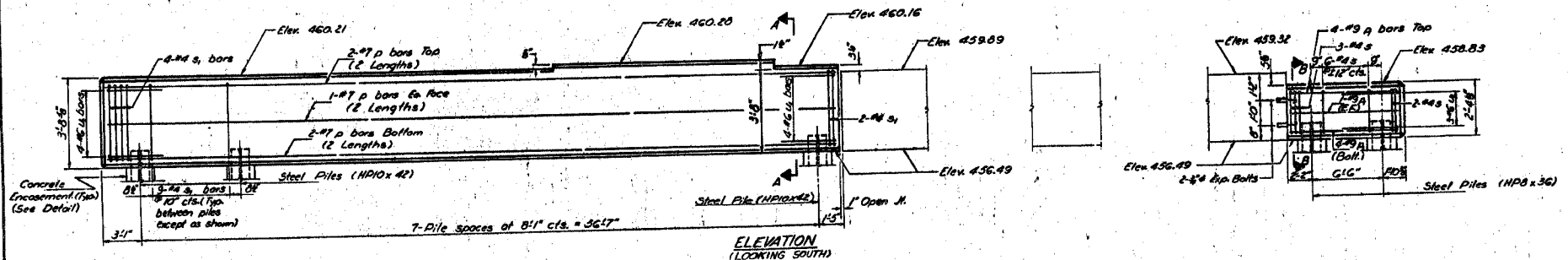


STATE OF ILLINOIS  
DEPARTMENT OF TRANSPORTATION

PROJECT NO.	DATE	BY	CHECKED	SCALE	SHEET NO.	TOTAL SHEETS
805	1/7	St. Clair	1/7	1/2"	13	20



PLAN

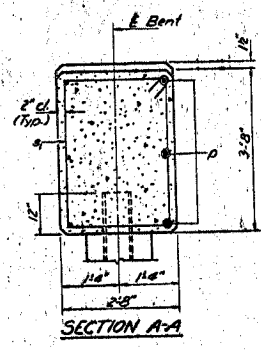


ELEVATION  
(LOOKING SOUTH)

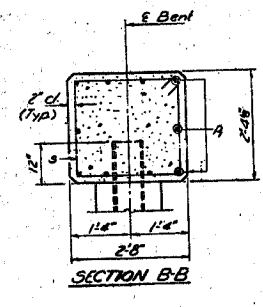
	East Widening Bent	West Widening Bent
Type	Steel (HP10x42)	Steel (HP8x36)
Capacity	Drive to Refusal	Drive to Refusal
Est. Length	86'-0"	86'-0"
No. Required	7# Test Pile	2

DESIGNED: Stanley S. Linn  
CHECKED: Jim Edwards  
DRAWN: R. Doty  
CHECKED: Jc

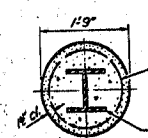
DATE: June 25, 1972  
APPROVED: [Signature]  
[Signature]



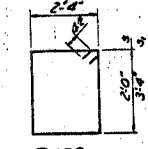
SECTION A-A



SECTION B-B



PILE ENCASUREMENT DETAIL  
(Extend 2'-0" below natural ground)



BARS 31a

Welded wire fabric C"x6" mesh #6  
wire-weighting 35#900 sp. 11  
The cost of Class X Concrete Encasement and Reinforcement is incidental to the cost of furnishing piles. Forms for encasement may be omitted when soil conditions will permit.

BILL OF MATERIAL

Bar	No.	Size	Length	Shape
P	12	#7	31'-8"	
D	10	#9	10'-3"	
S	11	#4	91'-5"	
31	69	#6	121'-7"	
U	11	#6	11'-8"	

Class X Concrete	Cu. Yds.	249
Reinforcement Bars	Pounds	1340
Expansion Bolts 3/4"	Each	4
Test Piles Steel (HP10x42)	Each	1
Steel Piles (HP8x36)	Lin. Ft.	172
Steel Piles (HP10x42)	Lin. Ft.	602

BENT 1  
F.A.P. RT. 805 SEC. 147B-1  
ST. CLAIR COUNTY  
STA. 101+03.82