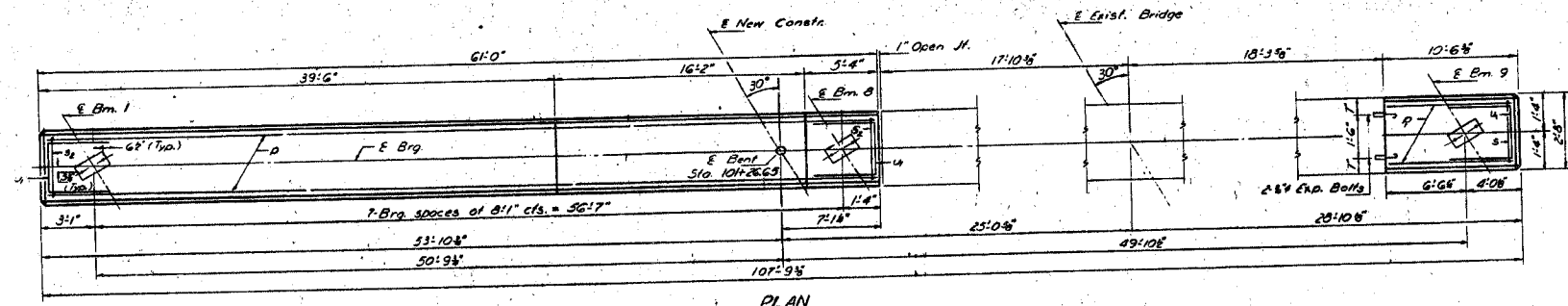
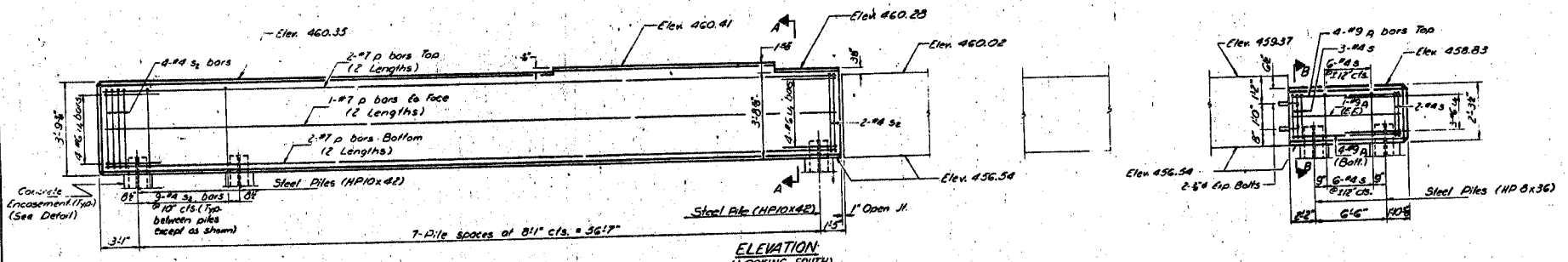


STATE OF ILLINOIS  
DEPARTMENT OF TRANSPORTATION

PROJECT NO.	805	SECTION	M7	ST. CLAIR	M7	57	SHEET NO. 14
							20 SHEETS

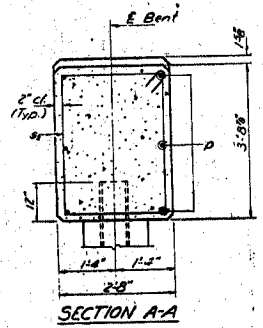


PLAN

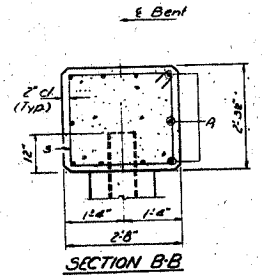


ELEVATION  
(LOOKING SOUTH)

	East Widening Bent	West Widening Bent
Type	Steel (HP10x42)	Steel (HP8x36)
Capacity	Drive to Refusal	Drive to Refusal
Est. Length	86'-0"	86'-0"
No. Required	7+1 Test Pile	2



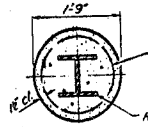
SECTION A-A



SECTION B-B

Welded wire fabric 6"x6" mesh #8 wire weighing 50.9100 sq. ft. The cost of Class X Concrete Encasement and Reinforcement is incidental to the cost of furnishing piles. Forms for encasement may be omitted when soil conditions will permit.

PILE ENCASEMENT DETAIL  
(Extend 2'-0" below natural ground)



BARS 31 s/c

BAR 4

Bar	No.	Size	Length	Shape
P	12	#7	31'-8"	□
D	10	#9	10'-3"	□
S	11	#4	9'-5"	□
S2	69	#8	12'-3"	□
U	11	#6	11'-8"	□

Class I Concrete	Cu. Yd.	23.4
Reinforcement Bars	Pound	1980
Expansion Bolts 8"	Each	4
Test Piles Steel (HP10x42)	Each	1
Steel Piles (HP8x36)	Lin. Ft.	172
Steel Piles (HP10x42)	Lin. Ft.	602

BENT 2  
F.A.P. RT 805 SEC 147B-1  
ST. CLAIR COUNTY  
STA. 101+03.82

DESIGNED: Jims 23 1172  
CHECKED: Jim G. Edwards  
DRAWN: R. Doby  
CHECKED: JJC  
APPROVED: [Signature]  
PASSED: [Signature]  
DATE: [Signature]