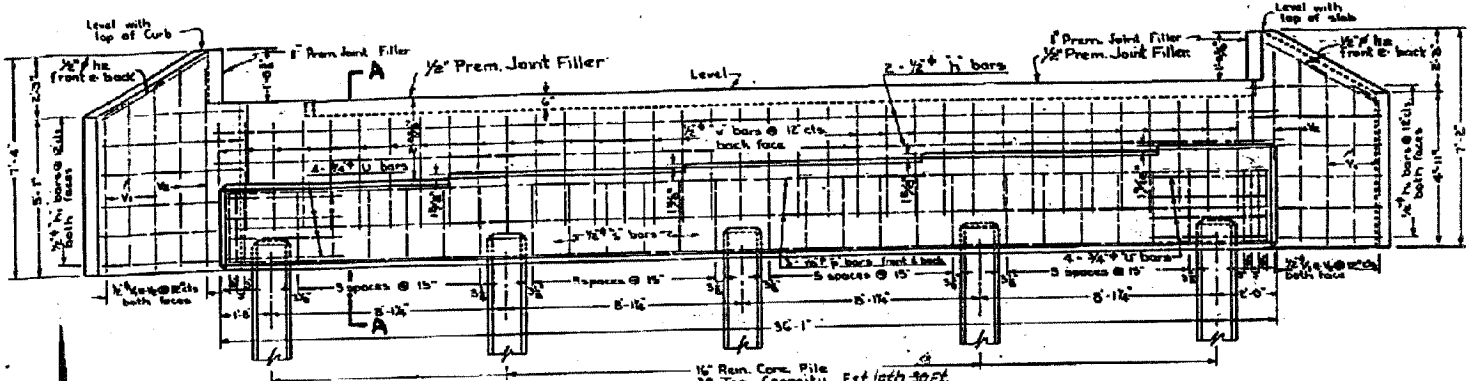
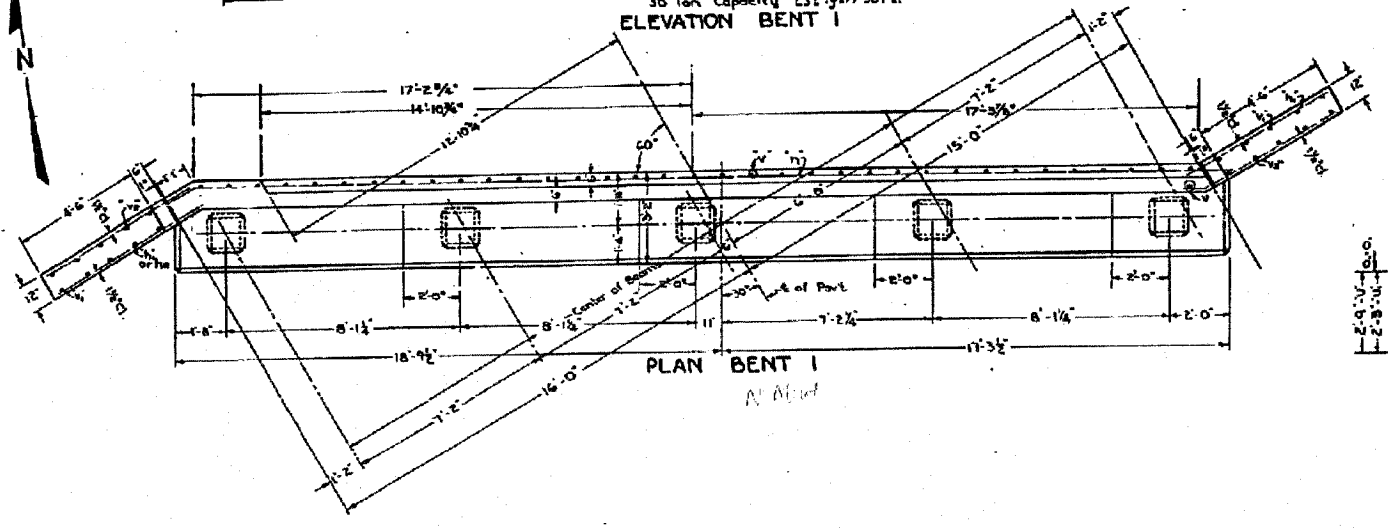


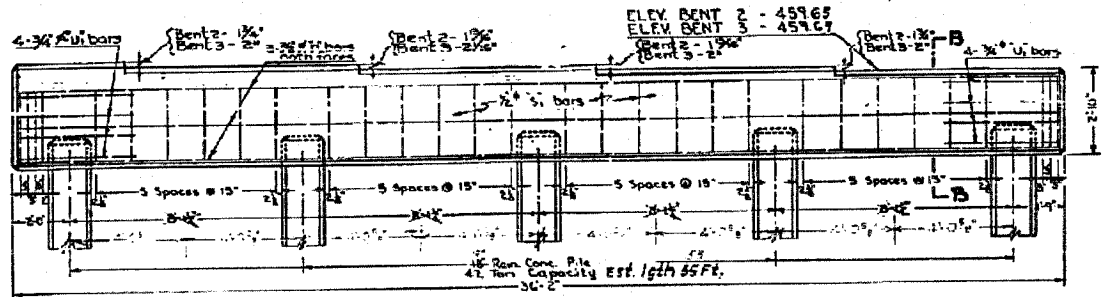
DATE	1968	BY	ST/CL
NO.	146	REV.	157
PROJECT			



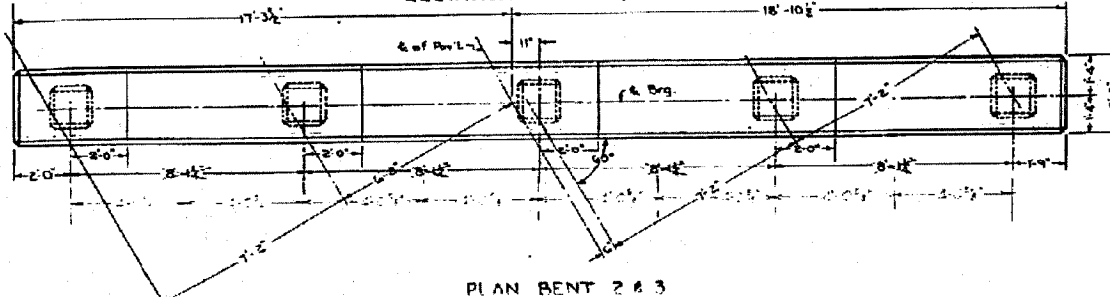
ELEVATION BENT 1



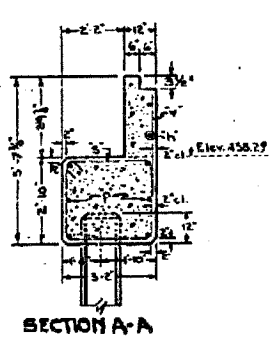
PLAN BENT 1



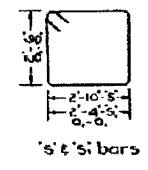
ELEVATION BENT 2 & 3



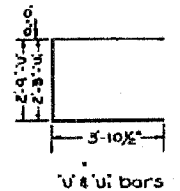
PLAN BENT 2 & 3



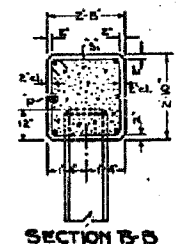
SECTION A-A



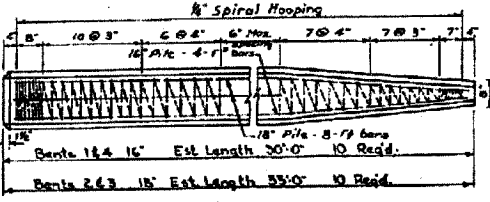
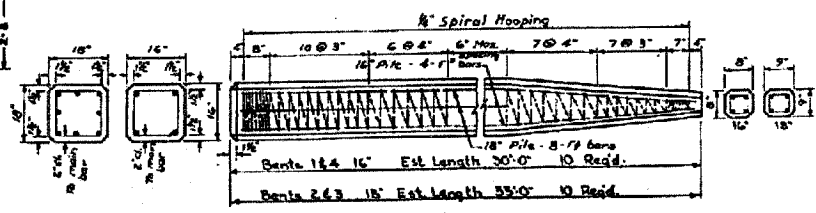
5" x 5" bars



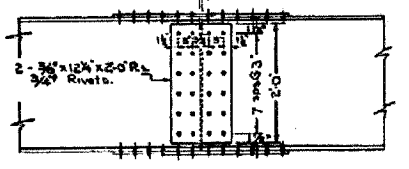
5" x 4" U bars



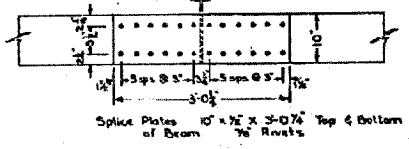
SECTION B-B



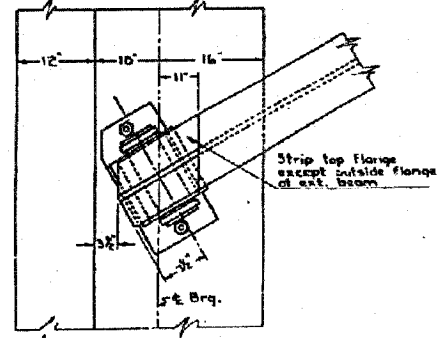
Bent 1 & 2 16' Est Length 30'-0" 10 Reqd.
Bent 2 & 3 18' Est Length 33'-0" 10 Reqd.



DETAIL OF SPLICE



DETAIL OF END BEARINGS



PLAN OF BEARING AT END BENTS

BILL OF MATERIALS - SUB-STRUCTURE

BAR	NO	SIZE	LENGTH
D	4	1/2"	12'-0"
D1	48	1/2"	8'-0"
TE	2	1/2"	5'-0"
P	48	1/2"	19'-6"
S	62	1/2"	11'-9"
S1	62	1/2"	10'-9"
U	16	1/2"	12'-6"
U1	16	1/2"	10'-0"
V	74	1/2"	4'-0"
V1	74	1/2"	5'-0"
V2	16	1/2"	2'-0"

Class X concrete 58.1 Cu Yd
 Reinforcement bars 4010 Lbs
 Furnishing 16 precast conc piles (38' long)
 74' long R.C.C. 27.9 Lin Ft.
 Furnishing 12 precast conc piles (33' long) = 24.4 Lin Ft.
 Drilling 16 precast conc piles 279 Lb Ft.
 Drilling 12 precast conc piles 375 Lb Ft.
 Total Piles (16' precast conc) 1 Each
 Total Pile (18' precast conc) 1 Each

PROJECT S-197(1)
NIGGER HOLLOW CREEK BRIDGE
 Sta. 66+13.01
SHEET 3 OF 4 SHEETS
ST. CLAIR COUNTY, ILL.

F.A.S. ROUTE No. 840, SEC. 146 B.F.