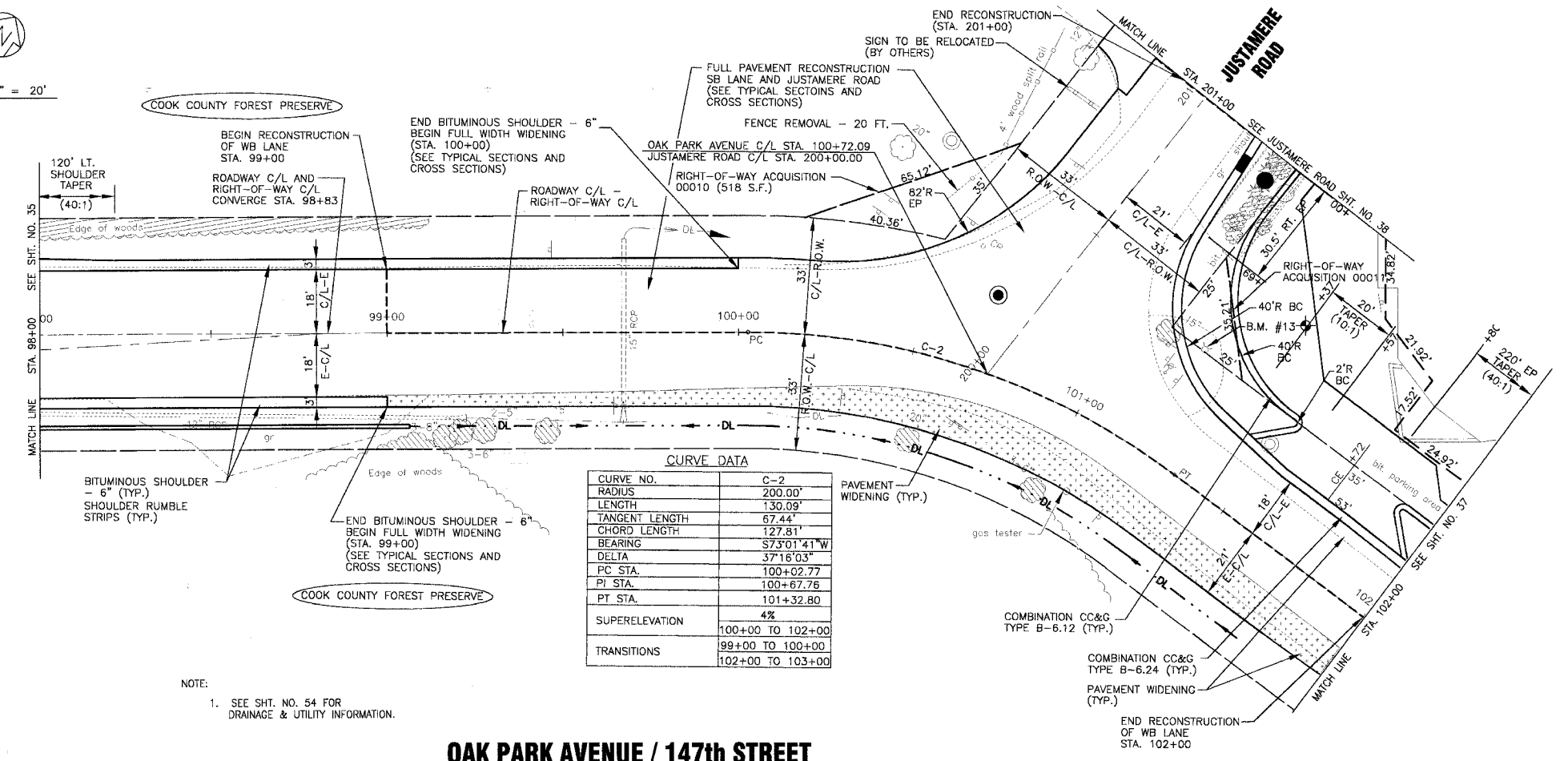
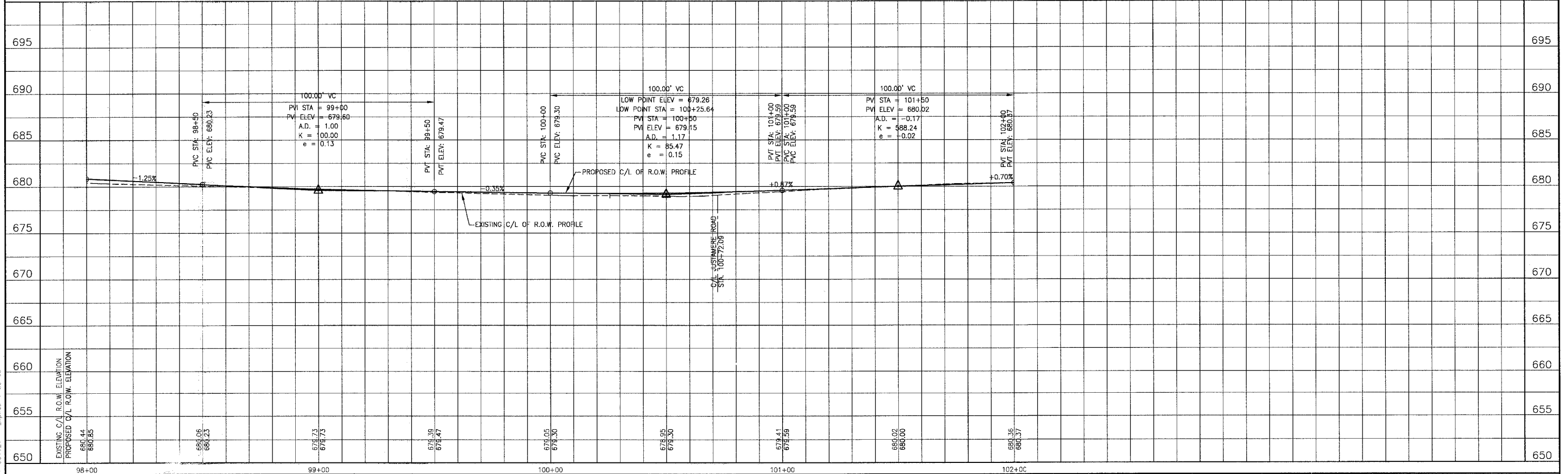


SCALE: 1" = 20'



NOTE:
1. SEE SHT. NO. 54 FOR DRAINAGE & UTILITY INFORMATION.

OAK PARK AVENUE / 147th STREET



I:\OAK\020146\Drawn\20146-OPRK-SPR.dwg
 Plotter: 4-27-06 @ 3:42pm By: 231ubb
 Copyright © 2004, By Baxter & Woodman, Inc.
 State of Illinois - Professional Design Firm
 License No. - 154-001121 - Expires 4-30-06

CONSULTANTS	REV. NO.	DATE	DESCRIPTION
	1	4-28-06	PER DOT AND COOK COUNTY COMMENTS

BAXTER & WOODMAN
Consulting Engineers

Baxter & Woodman
Crystal Lake, Illinois 815.438.1250
Purinton, Illinois 815.438.1254
Mokena, Illinois 708.478.2080
DeKalb, Illinois 815.787.9111
Graylake, Illinois 815.438.1251
Plainfield, Illinois 815.609.7425

CITY OF OAK FOREST, ILLINOIS
OAK PARK AVENUE PROJECT

OAK PARK AVENUE / 147TH STREET
STA. 98+00 TO STA. 102+00
GEOMETRIC PLAN

DESIGNED BY NJP	SCALE VERT: 1"=5'
DRAWN BY UKB	HORIZ: 1"=20'
CHECKED BY NJP	PROJECT NO. 020146
DATE 1-20-05	SHEET NO. 36 OF 116