

F.A. RTE.	SECTION	COUNTY	TOTAL SHEETS	SHEET NO.
			156	69
STA.		TO STA.		
FED. ROAD DIST. NO.	ILLINOIS FED. AID PROJECT			

ROUTE MARKERS

FOR U.S. ROUTES
MI-40-2424

FOR ILLINOIS ROUTES
MI-50-2424

R.R. UNMARKED ROUTES
SPECIAL 24" x 18" VARIABLE
4" BLACK LETTERS ON WHITE
REFLECTIVE BACKGROUND

ARROWS SIGNS

M5-1L-2115

M5-1R-2115

M6-1L-2115

M6-1R-2115

M6-3-2115

CARDINAL DIRECTION & DETOUR SIGNS

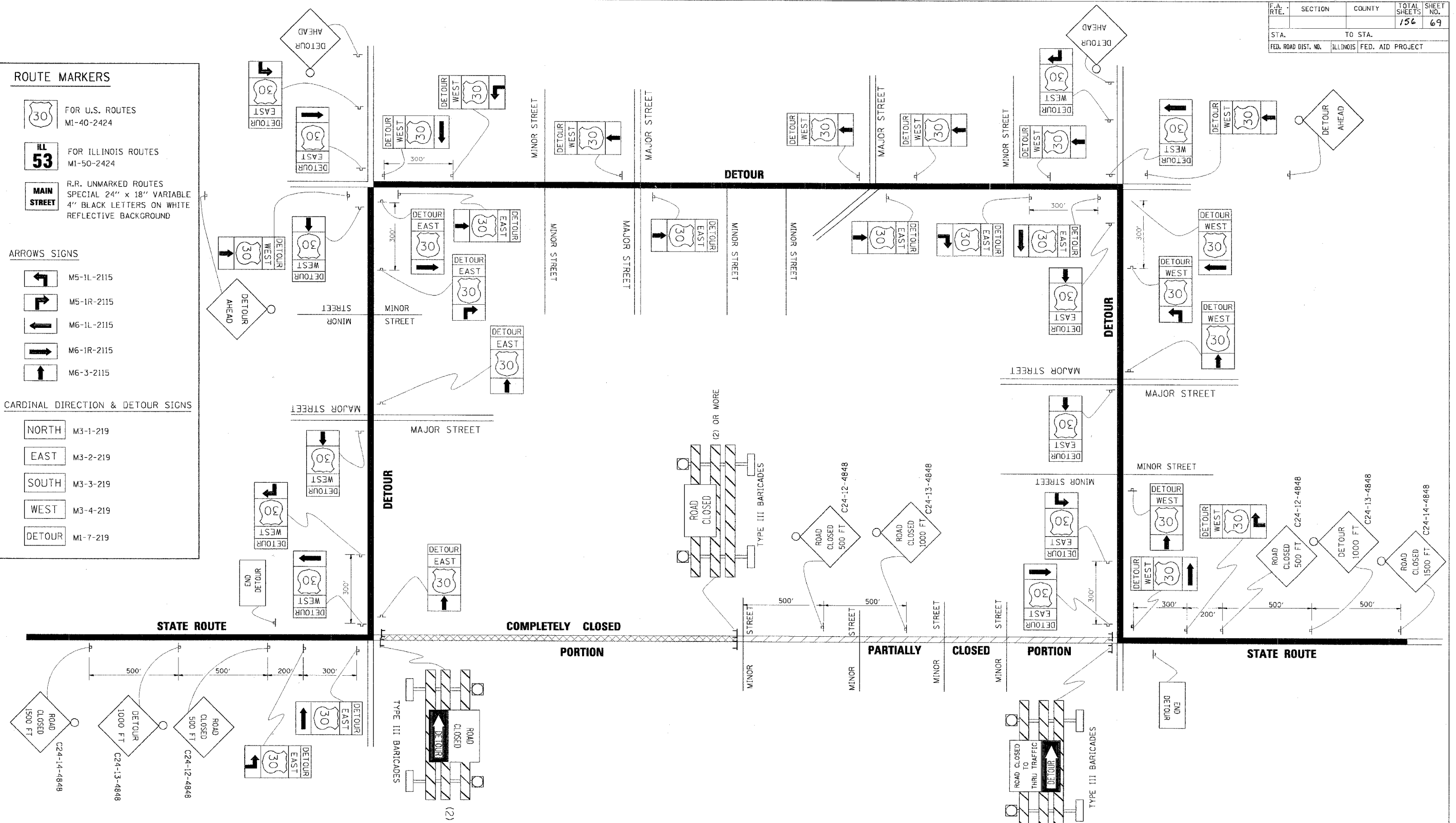
NORTH M3-1-219

EAST M3-2-219

SOUTH M3-3-219

WEST M3-4-219

DETOUR MI-7-219



REVISIONS	
NAME	DATE

ILLINOIS DEPARTMENT OF TRANSPORTATION

TYPICAL MARKING FOR CLOSING STATE HIGHWAYS

SCALE: NONE
DATE: 10/18/2002

DRAWN BY
CHECKED BY
TC-21

REVISION DATE:

DATE-TIME
DSN-SPEC
V-T-C21