

**STATE OF ILLINOIS
DEPARTMENT OF TRANSPORTATION
DIVISION OF HIGHWAYS**

**PLANS FOR PROPOSED
FEDERAL AID PROJECT**

**F.A.U. ROUTE 089 LINCOLN ROAD, F.A.U. ROUTE 164 SULLIVAN LAKE ROAD
AND F.A.U. ROUTE 3863 CUHLMAN ROAD
LINCOLN ROAD - FROM 650' EAST OF F.A.U. ROUTE 167 CHAPEL HILL ROAD
TO 330' EAST OF MARGARET COURT
SULLIVAN LAKE ROAD - FROM WEST VILLAGE LIMITS TO EAST VILLAGE LIMITS
CUHLMAN ROAD - FROM F.A.U. ROUTE 089 LINCOLN ROAD TO 745' SOUTH OF
F.A.U. ROUTE 186 BAY ROAD
SECTION: 05-00007-00-RS
PROJECT NO.: M-8003 (556)
McHENRY & LAKE COUNTY
JOB NO.: C-91-128-06**

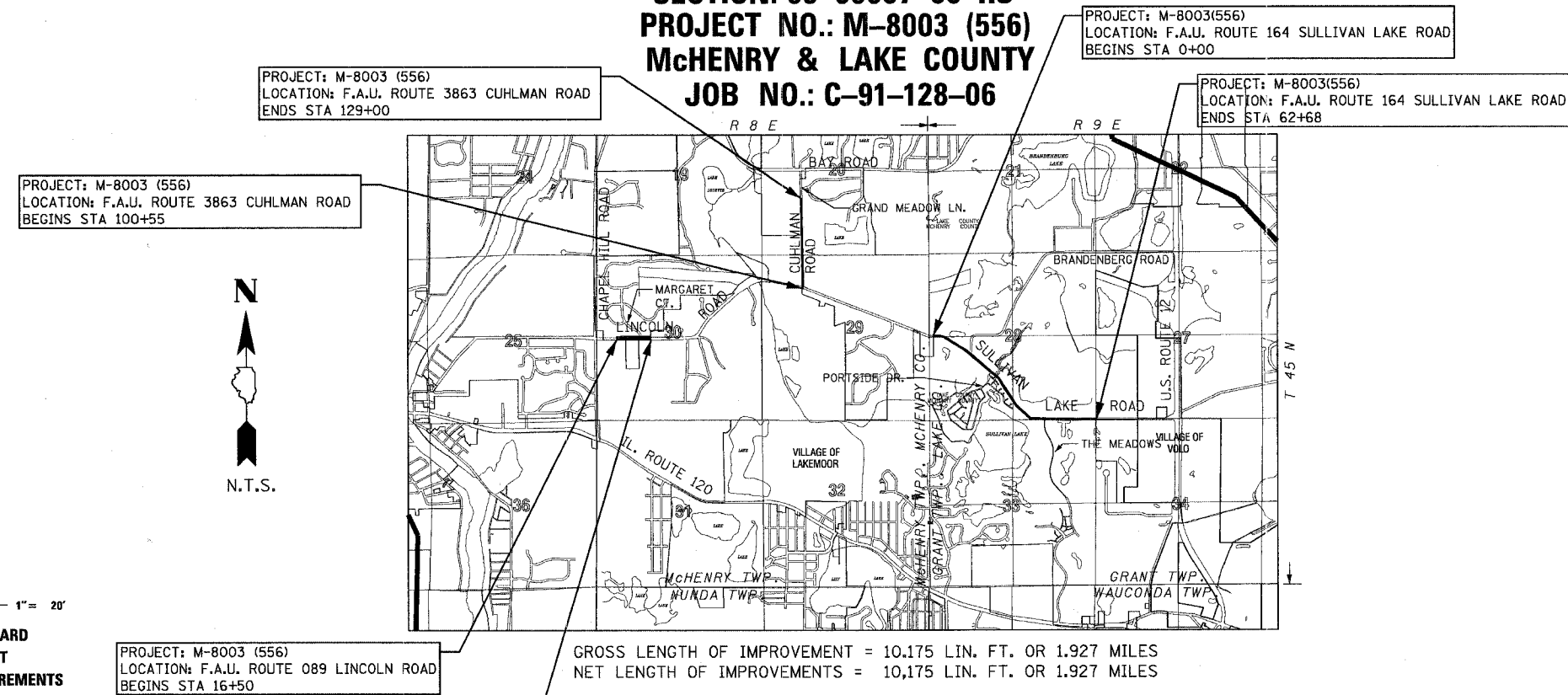
F.A.U. RTE. 089/164/3863	SECTION 05-00007-00-RS	COUNTY McHENRY & LAKE	TOTAL SHEETS 15	SHEET NO. 1
STA. FED. ROAD DIST. NO. C-91-128-06	TO STA. ILLINOIS		FED. AID PROJECT M-8003 (556)	

CONTRACT NO. 83846



FOR INDEX OF SHEETS, SEE SHEET NO. 2

PROJECT LOCATED IN
THE VILLAGE OF LAKEMOOR

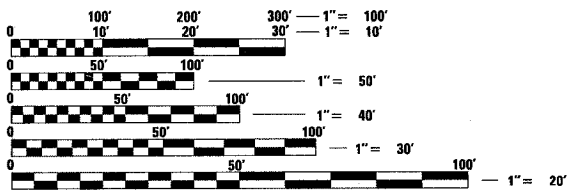


GROSS LENGTH OF IMPROVEMENT = 10.175 LIN. FT. OR 1.927 MILES
NET LENGTH OF IMPROVEMENTS = 10.175 LIN. FT. OR 1.927 MILES



Baxter & Woodman

- Burlington, Wisconsin 262.763.7834
- (Crystal Lake, Illinois) 815.459.1260
- DeKalb, Illinois 815.787.3111
- Mokena, Illinois 708.478.2090
- Grayslake, Illinois 847.223.5088
- Rockford, Illinois 815.489.1551



FULL SIZE PLANS HAVE BEEN PREPARED USING STANDARD ENGINEERING SCALES. REDUCED SIZED PLANS WILL NOT CONFORM TO STANDARD SCALES. IN MAKING MEASUREMENTS ON REDUCED PLANS, THE ABOVE SCALES MAY BE USED.

J.U.L.I.E.
JOINT UTILITY LOCATION INFORMATION FOR EXCAVATION
1-800-892-0123

BAXTER & WOODMAN, INC.
STATE OF ILLINOIS - PROFESSIONAL DESIGN FIRM
LICENSE NO. - 184-001121 - EXPIRES 4/30/2007

CONTRACT NO. 83846

COPYRIGHT © 2006, BY BAXTER & WOODMAN, INC. ALL RIGHTS RESERVED. NO PART OF THESE DRAWINGS MAY BE REPRODUCED, OR OTHERWISE REVISED WITHOUT WRITTEN PERMISSION OF BAXTER & WOODMAN, INC.

(OFFICE WHICH PREPARED PLANS)

MICHAEL W. TILN
62-056311
REGISTERED PROFESSIONAL ENGINEER
PROJECT MANAGER
"LICENSE EXPIRES 11-30-07"

**STATE OF ILLINOIS
DEPARTMENT OF TRANSPORTATION
DIVISION OF HIGHWAYS**

APPROVED: *March 1, 2006*
Virginia [Signature]
LOCAL AGENCY REPRESENTATIVE

PASSED: *April 7, 2006*
[Signature]
LOCAL ROADS ENGINEER

SIGNED: *April 10, 2006*
Diane M. O'Keefe [Signature]
DEPUTY DIRECTOR OF HIGHWAYS, REGION ENGINEER

**PRINTED BY THE AUTHORITY
OF THE STATE OF ILLINOIS**

PROJECT NO.: 050271 DATE: 11-15-05

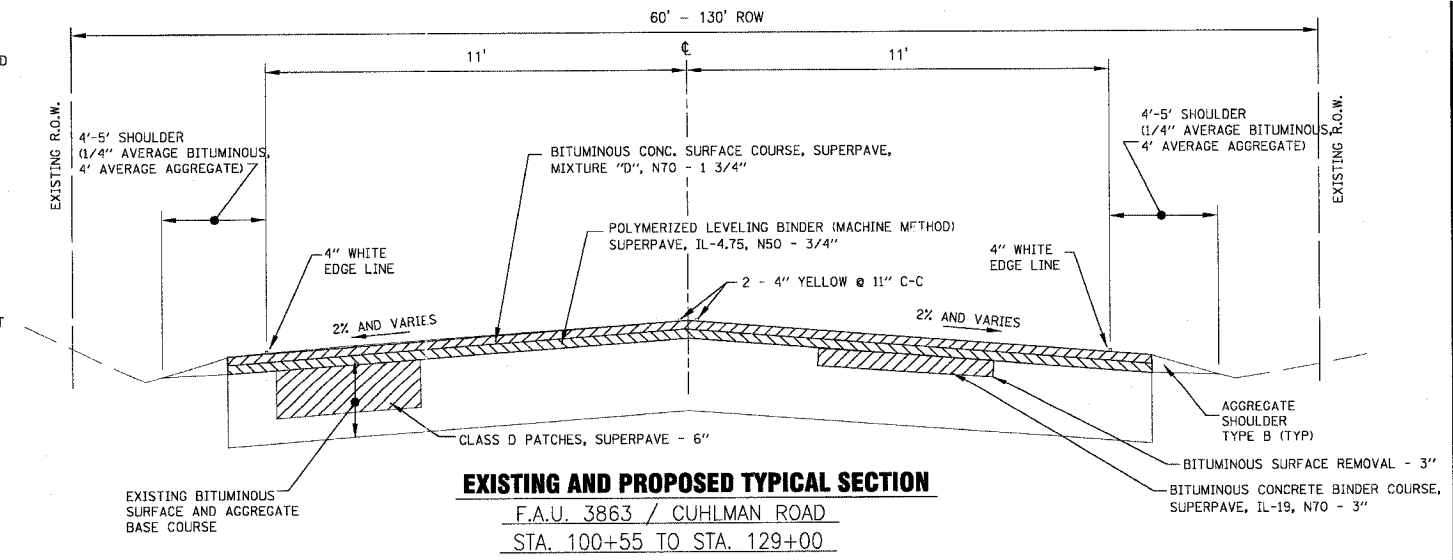
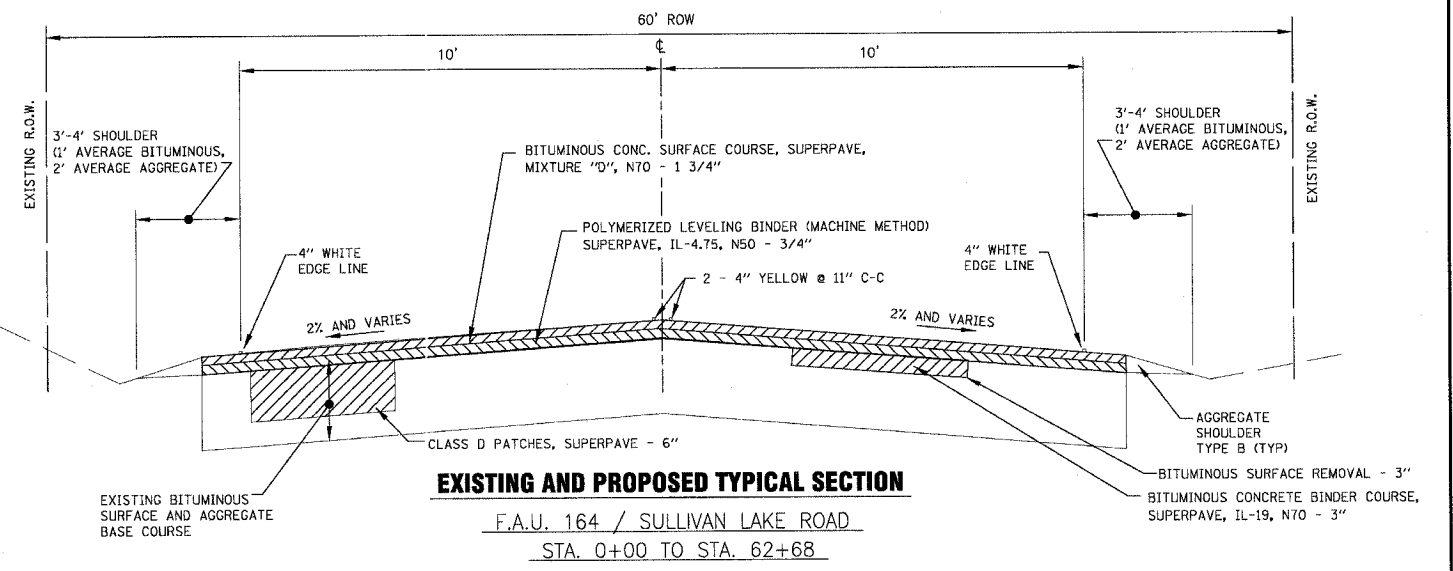
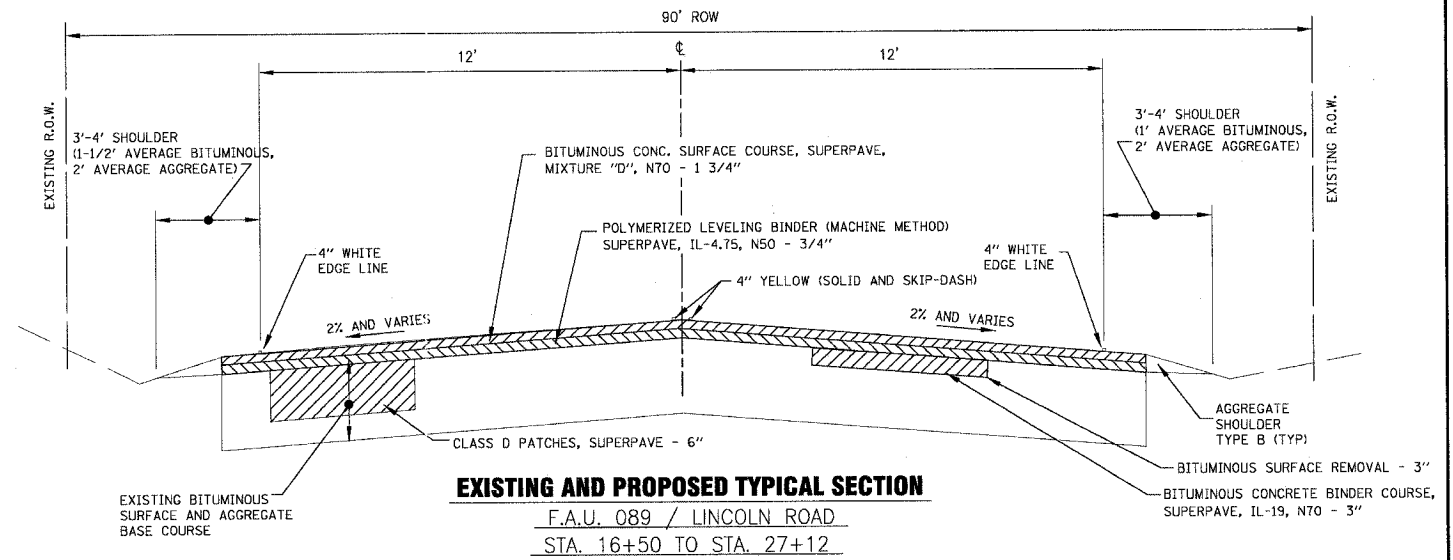
FEDERAL AID DESIGN ENGINEER: ABIGAIL BRINKS 847-705-4233

F.A.U. RTE.	SECTION	COUNTY	TOTAL SHEETS	SHEET NO.
089/164/3863	05-00007-00-RS	McHENRY & LAKE	15	2
STA.		TO STA.		
FED. ROAD DIST. NO.		ILLINOIS	FED. AID PROJECT	
C-91-128-06			M-8003 (556)	

CONTRACT NO. 83846

GENERAL NOTES

- THE CONTRACTOR SHALL PROTECT AND CAREFULLY PRESERVE ALL SECTION OR SUBSECTION MONUMENTS OR PROPERTY OR REFERENCE MARKERS UNTIL THE OWNER, HIS AGENT OR AN AUTHORIZED SURVEYOR HAS WITNESSED OR OTHERWISE REFERENCED THEIR LOCATIONS.
- THE CONTRACTOR SHALL BE RESPONSIBLE FOR CONTACTING THE OWNERS OF ALL EXISTING UTILITIES SO THAT THE UTILITIES AND THEIR APPURTENANCES MAY BE LOCATED AND ADJUSTED OR MOVED, IF NECESSARY, PRIOR TO THE START OF CONSTRUCTION OPERATIONS. THE CONTRACTOR SHALL COOPERATE WITH ALL UTILITY OWNERS AS PROVIDED IN THE STANDARD SPECIFICATIONS. UTILITY LOCATIONS ARE APPROXIMATE. THE CONTRACTOR SHALL USE CAUTION WHERE THERE ARE POTENTIAL CONFLICTS. PRIOR TO THE CONSTRUCTION OF THE STORM SEWER, THE CONTRACTOR SHALL NOTIFY THE VILLAGE TO LOCATED EXISTING WATER MAIN, WATER SERVICES, SANITARY SEWER, AND SANITARY SEWER SERVICES WHERE THE PROPOSED STORM SEWER WILL CROSS.
- THE CONTRACTOR SHALL BE RESPONSIBLE FOR THE PROTECTION OF ALL UNDERGROUND OR SURFACE UTILITIES EVEN THOUGH THEY MAY NOT BE SHOWN ON THE PLANS. ANY UTILITY THAT IS DAMAGED DURING CONSTRUCTION SHALL BE REPAIRED TO THE SATISFACTION OF THE ENGINEER OR THE OWNER OR REPLACED. THIS WORK SHALL BE AT THE CONTRACTOR'S EXPENSE.
- ALL AGGREGATE USED ON THIS PROJECT SHALL BE CRUSHED MATERIAL.
- ALL SAW CUTTING SHALL BE INCLUDED IN THE COST OF THE ITEM BEING REMOVED.
- ALL CONSTRUCTION PERSONNEL WILL BE REQUIRED TO WEAR FLUORESCENT ORANGE VEST AT ALL TIMES WHILE ON THE CONSTRUCTION SITE. FLAGGERS ARE REQUIRED TO WEAR GREEN VESTS AS DESCRIBED IN THE SPECIAL PROVISIONS. COMPLIANCE WITH THIS REQUIREMENT SHALL BE INCLUDED IN THE PAY ITEM FOR TRAFFIC CONTROL AND PROTECTION, STANDARD 701501.
- DURING CONSTRUCTION STAGING OPERATIONS, THE McHENRY COUNTY SHERIFF'S DEPARTMENT AND McHENRY TOWNSHIP FIRE PROTECTION DISTRICT SHALL BE NOTIFIED IN WRITING 48 HOURS PRIOR TO STREET CLOSURES. EMERGENCY ACCESS SHALL BE ALLOWED AT ALL TIMES.
- BARRICADES: THE CONTRACTOR SHALL PROVIDE AND INSTALL TWO (2) WEIGHTED SAND BAGS ON EACH TYPE I OR TYPE II BARRICADE USED-ONE (1) WEIGHTED SAND BAG ACROSS EACH BOTTOM RAIL.
- THE CONTRACTOR SHALL PROVIDE ACCESS TO ABUTTING PROPERTY AT ALL TIMES DURING CONSTRUCTION OF THIS PROJECT EXCEPT PERIODS OF SHORT DURATION.
- BEFORE STARTING ANY EXCAVATION, THE CONTRACTOR SHALL CALL "JULIE" AT 800-892-0123 FOR FIELD LOCATIONS OF BURIED ELECTRIC, TELEPHONE AND GAS FACILITIES. (48 HOUR NOTIFICATION IS REQUIRED)
- THE CONTRACTOR SHALL COORDINATE CONSTRUCTION ACTIVITIES WITH UTILITY COMPANIES AND THE VILLAGE OF LAKEMOOR.
- ALL SHOULDER AGGREGATE SHALL BE CA-6 (CRUSHED GRAVEL OR CRUSHED STONE).
- THE ITEMS FOR PATCHING ARE NOT TO EXCEED THE QUANTITY LISTED IN THE SUMMARY OF QUANTITIES.
- BITUMINOUS SURFACE REMOVAL (VARIABLE DEPTH) IS REQUIRED TO REMOVE THE EXISTING BITUMINOUS PAVEMENT SUFFICIENTLY FOR RESURFACING AT THE INTERSECTION OF LINCOLN ROAD AND MARGARET COURT WHERE EXISTING CURB AND GUTTER TO REMAIN IS LOCATED.
- BITUMINOUS SHOULDER REMOVAL (SPECIAL) IS REQUIRED TO REMOVE THE EXISTING BITUMINOUS SHOULDER SUFFICIENTLY FOR RESURFACING IN THE VICINITY OF THE GOLF COURSE ENTRANCE ON SULLIVAN LAKE ROAD.



STATE STANDARDS

STANDARD NO.	STATE STANDARDS
000001-04	STANDARD SYMBOLS, ABBREVIATIONS AND PATTERNS
406201	MAILBOX TURNOUT
442201-01	CLASS C AND D PATCHES
482001	BITUMINOUS SHOULDER ADJACENT TO FLEXIBLE PAVEMENT
701501-05	LANE CLOSURE, 2L 2W, DAY OR NIGHT OPERATIONS, FOR SPEEDS <45 MPH
702001-01a	TRAFFIC CONTROL DEVICES
780001-01	TYPICAL PAVEMENT MARKINGS
781001-02	TYPICAL APPLICATIONS RAISED REFLECTIVE PAVEMENT MARKERS

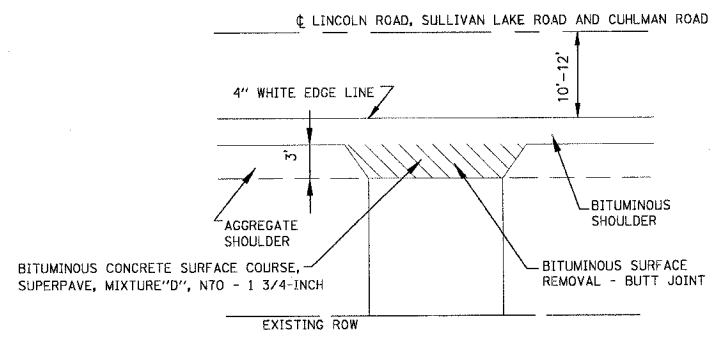
INDEX OF SHEETS

SHEET NO.	TITLE
1.	COVER SHEET
2.	STATE STANDARDS, INDEX OF SHEETS, GENERAL NOTES, BITUMINOUS MIXTURE REQUIREMENTS, TYPICAL SECTIONS & DETAILS
3.	SUMMARY OF QUANTITIES
4.	PLAN: LINCOLN ROAD
5.-6.	PLAN: SULLIVAN LAKE ROAD
7.	PLAN: CUHLMAN ROAD
8.	TC-10 DISTRICT 1 TRAFFIC CONTROL AND PROTECTION FOR SIDE ROADS, INTERSECTIONS AND DRIVEWAYS
9.	TC-11 RAISED REFLECTIVE PAVEMENT MARKERS (SNOW-PLOW RESISTANT)
10.	TC-13 DISTRICT 1 TYPICAL PAVEMENT MARKINGS
11.	TC-18 SIGNING FOR FLAGGING OPERATIONS AT WORK ZONE OPENINGS
12.	TC-22 TEMPORARY INFORMATION SIGNING
13.	BD-22 PAVEMENT PATCHING FOR BITUMINOUS SURFACED PAVEMENT
14.	BD-32 BUTT JOINT AND BITUMINOUS TAPER DETAILS
15.	BM-14 METHOD OF FLAGGING

BITUMINOUS MIXTURE REQUIREMENTS

ITEM	AC TYPE	VOIDS	RAP
CLASS "D" PATCHES, TYPE 1-IV, 6", IL-19mm	PG 64-22	4% @ 70 GYR	15%
POLYMERIZED LEVELING BINDER (MACHINE METHOD), SUPERPAVE, IL-4.75, N50	SBS/SBR PG 76-28	2.5% @ 50 GYR	0%
BITUMINOUS CONCRETE SURFACE COURSE, SUPERPAVE, MIX "D", N70	PG 64-22	4% @ 70 GYR	10%
BITUMINOUS CONCRETE BINDER COURSE, SUPERPAVE, IL-19, N70	PG 64-22	4% @ 70 GYR	15%

*THE UNIT WEIGHT USED TO CALCULATE ALL BITUMINOUS IS 112 LBS. / SQ.YD. / IN"



BITUMINOUS DRIVEWAY DETAIL

NO SCALE

48/c/c 03/02/2006 09:55:55 AM I:\LMRIA\050271\dgn\050271-gen.sht
COPYRIGHT © 2006 BY BAXTER & WOODMAN, INC.
ALL RIGHTS RESERVED. LICENSE NO. 184-00181 - EXPIRES 4/30/2007

CONSULTANTS	REV. NO.	DATE	DESCRIPTION
	1	12/21/05	PER IDOT REVIEW
	2	2/27/06	PER IDOT REVIEW

* REFER TO EQUIPMENT MANUFACTURER'S SHOP DRAWINGS

DRAWING FILE: ...050271\dgn\050271-gen.sht

BAXTER & WOODMAN
Consulting Engineers

Baxter & Woodman
Crystal Lake, Illinois 815.489.1260
Burlington, Wisconsin 262.783.7834
Mokena, Illinois 708.478.2090
DeKalb, Illinois 815.787.3111
Orland Park, Illinois 847.223.5088
Rockford, Illinois 815.489.1551

VILLAGE OF LAKEMOOR, ILLINOIS
LINCOLN ROAD, SULLIVAN LAKE ROAD & CUHLMAN ROAD
STP (LAPP) IMPROVEMENTS

STATE STANDARDS, INDEX OF SHEETS, GENERAL NOTES, BITUMINOUS MIXTURE REQUIREMENTS, TYPICAL SECTIONS & DETAILS

DESIGNED BY	SCALE
MWP	NONE
DRAWN BY	PROJECT NO.
CJC	050271
CHECKED BY	SHEET NO.
MWP	
DATE	
11/15/05	2 OF 15

F.A.U. RTE.	SECTION	COUNTY	TOTAL SHEETS	SHEET NO.
089/164/3863	05-00007-00-RS	McHENRY & LAKE	15	3
STA.		TO STA.		
FED. ROAD DIST. NO.	ILLINOIS	FED. AID PROJECT		
C-91-128-06		M-8003 (556)		

CONTRACT NO. 83846

CODE NO.	PAY ITEM	UNIT	1000 TOTAL	LINCOLN ROAD	SULLIVAN LAKE ROAD	CUHLMAN ROAD
20800150	TRENCH BACKFILL	CU YD	30	0	30	0
40600100	BITUMINOUS MATERIALS (PRIME COAT)	GALLON	5,295	792	3,085	1,418
40600300	AGGREGATE (PRIME COAT)	TON	107	16	62	29
40600980	BITUMINOUS SURFACE REMOVAL - BUTT JOINT	SQ YD	978	210	673	95
40601000	BITUMINOUS REPLACEMENT OVER PATCHES	TON	344	52	200	92
44000009	BITUMINOUS SURFACE REMOVAL 3"	SQ YD	1,325	198	772	355
44000030	BITUMINOUS SURFACE REMOVAL (VARIABLE DEPTH)	SQ YD	90	90	0	0
44001435	BITUMINOUS SHOULDER REMOVAL (SPECIAL)	SQ YD	222	0	222	0
44201713	CLASS D PATCHES, TYPE I, 6 INCH	SQ YD	46	0	46	0
44201717	CLASS D PATCHES, TYPE II, 6 INCH	SQ YD	926	505	208	213
44201721	CLASS D PATCHES, TYPE III, 6 INCH	SQ YD	351	45	93	213
44201723	CLASS D PATCHES, TYPE IV, 6 INCH	SQ YD	2,651	45	1,967	639
48101200	AGGREGATE SHOULDERS, TYPE B	TON	773	70	408	295
50105220	PIPE CULVERT REMOVAL	FOOT	82	0	82	0
54200640	PIPE CULVERTS, TYPE 1, CORRUGATED STEEL OR ALUMINUM CULVERT PIPE 15"	FOOT	82	0	82	0
54213870	STEEL END SECTIONS 15"	EACH	4	0	4	0
67100100	MOBILIZATION	L SUM	1	0.10	0.62	0.28
70102620	TRAFFIC CONTROL AND PROTECTION, STANDARD 701501	L SUM	1	0.10	0.62	0.28
70300100	SHORT-TERM PAVEMENT MARKING	FOOT	6,168	648	3,792	1,728
70301000	WORK ZONE PAVEMENT MARKING REMOVAL	SQ FT	2,056	216	1,264	576
• 78000100	THERMOPLASTIC PAVEMENT MARKING - LETTERS AND SYMBOLS	SQ FT	36	36	0	0
• 78000200	THERMOPLASTIC PAVEMENT MARKING - LINE 4"	FOOT	39,965	3,338	25,222	11,405
• 78000400	THERMOPLASTIC PAVEMENT MARKING - LINE 6"	FOOT	141	115	0	26
• 78000650	THERMOPLASTIC PAVEMENT MARKINGS - LINE 24"	FOOT	63	17	20	26
• 78100100	RAISED REFLECTIVE PAVEMENT MARKER	EACH	462	0	318	144
• Z0053700	RESETTING SURVEY MONUMENTS	EACH	1	0	1	0
• X0322256	TEMPORARY INFORMATION SIGNING	SQ FT	154	51	51.4	51.4
X4066424	BITUMINOUS CONCRETE SURFACE COURSE, SUPERPAVE, MIX "D", N70	TON	2,740	409	1,597	734
X4066614	BITUMINOUS CONCRETE BINDER COURSE, SUPERPAVE, IL-19.0, N70	TON	231	35	134	62
X4066905	POLYMERIZED LEVELING BINDER (MACHINE METHOD), SUPERPAVE IL 4.75, N50	TON	1,144	171	667	306

• INDICATES SPECIALITY ITEM

03/02/2006 09:25:56 AM
 I:\KRM\050271\dgn\050271-sq.dwg
 STATE OF ILLINOIS - PROFESSIONAL DESIGN FIRM
 LICENSE NO. - 84-00101 - EXPIRES 4/30/2007

CONSULTANTS	REV. NO.	DATE	DESCRIPTION
	1	12/21/05	PER IDOT REVIEW
	2	2/27/06	PER IDOT REVIEW

* REFER TO EQUIPMENT MANUFACTURER'S SHOP DRAWINGS

DRAWING FILE: ...050271\dgns\050271-sq.dwg

BAXTER
WOODMAN
Consulting Engineers

Baxter & Woodman
Crystal Lake, Illinois 815.489.1260
Burlington, Wisconsin 262.763.7834
Mokena, Illinois 708.478.5090
DeKalb, Illinois 815.787.3111
Grayslake, Illinois 847.223.6088
Rockford, Illinois 815.489.1551

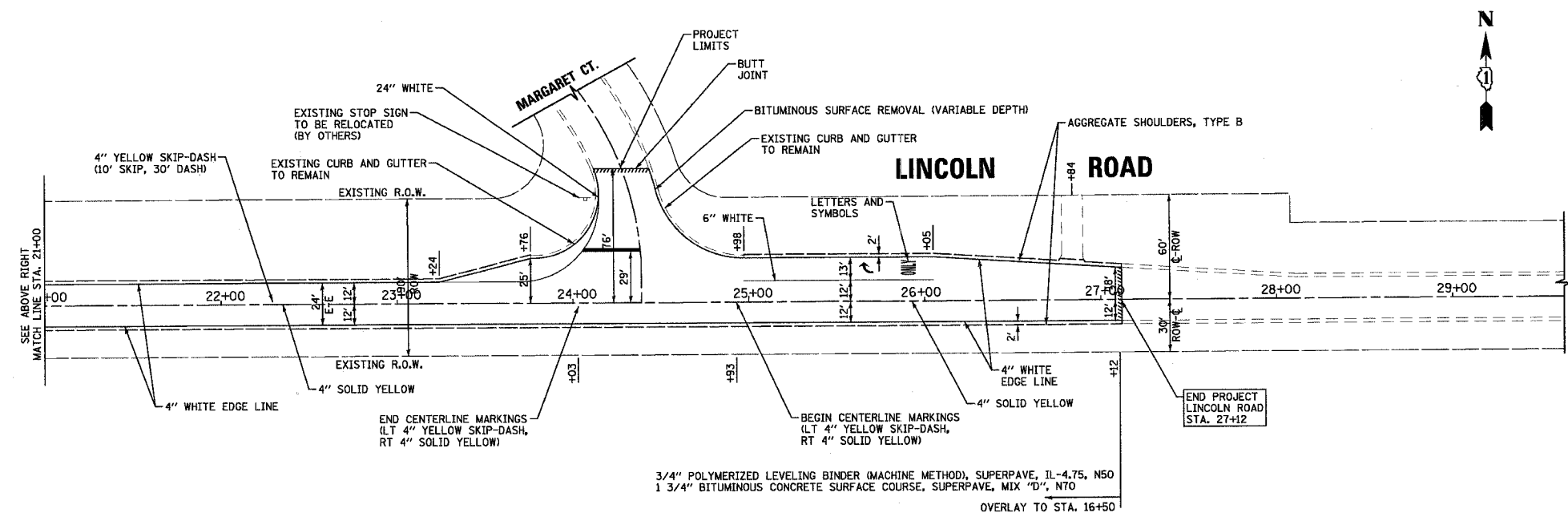
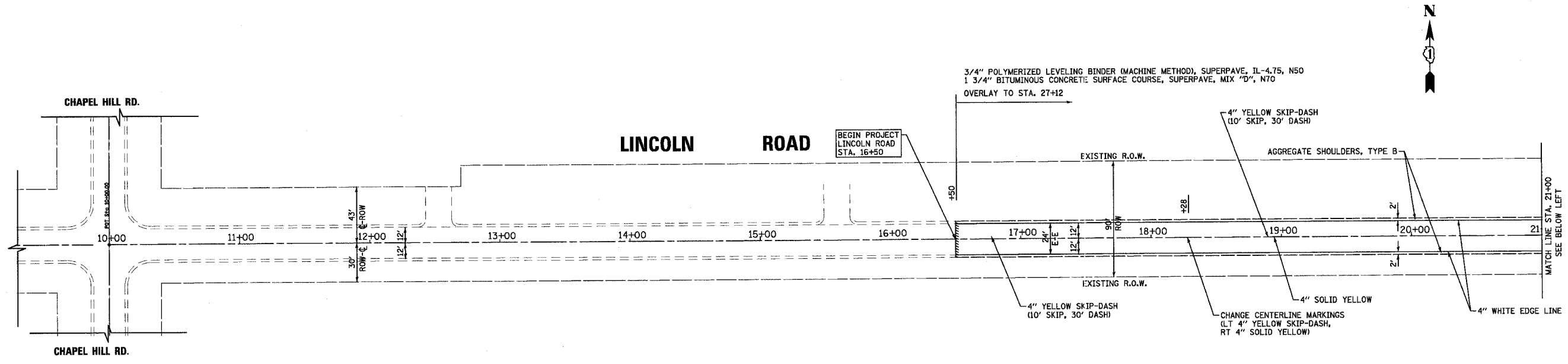
VILLAGE OF LAKEMOOR, ILLINOIS
LINCOLN ROAD, SULLIVAN LAKE ROAD & CUHLMAN ROAD
STP (LAPP) IMPROVEMENTS

SUMMARY OF QUANTITIES

DESIGNED BY	SCALE
MWP	NONE
DRAWN BY	PROJECT NO.
CJC	050271
CHECKED BY	SHEET NO.
MWP	3 OF 15
DATE	
11/15/05	

F.A.U. RTE.	SECTION	COUNTY	TOTAL SHEETS	SHEET NO.
089/164/3863	05-00007-00-RS	McHENRY & LAKE	15	4
STA.		TO STA.		
FED. ROAD DIST. NO.	ILLINOIS	FED. AID PROJECT		
C-91-128-06		M-8003 (556)		

CONTRACT NO. 83846



48c1c 03/02/2006 09:25:59 AM I:\KURT\050271\dgn\050271-p4.rvt
 C:\PROG~1\SOFT\BENTLEY\DRAWING\PLANS\050271.dwg
 LICENSE NO. 184-00021 EXPIRES 4/30/2007

CONSULTANTS	REV. NO.	DATE	DESCRIPTION
	1	12/21/05	PER IDOT REVIEW
	2	2/27/06	PER IDOT REVIEW

* REFER TO EQUIPMENT MANUFACTURER'S SHOP DRAWINGS

DRAWING FILE: ...050271\dgn\050271-p4.sht

BAKTER
WOODMAN
Consulting Engineers

Baxter & Woodman
Crystal Lake, Illinois 815.489.1200
Burlington, Wisconsin 262.763.7834
Mokena, Illinois 708.478.2090
DeKalb, Illinois 815.787.3111
Grayslake, Illinois 847.223.5088
Rockford, Illinois 815.489.1551

VILLAGE OF LAKEMOOR, ILLINOIS
LINCOLN ROAD, SULLIVAN LAKE ROAD & CUHLMAN ROAD
STP (LAPP) IMPROVEMENTS

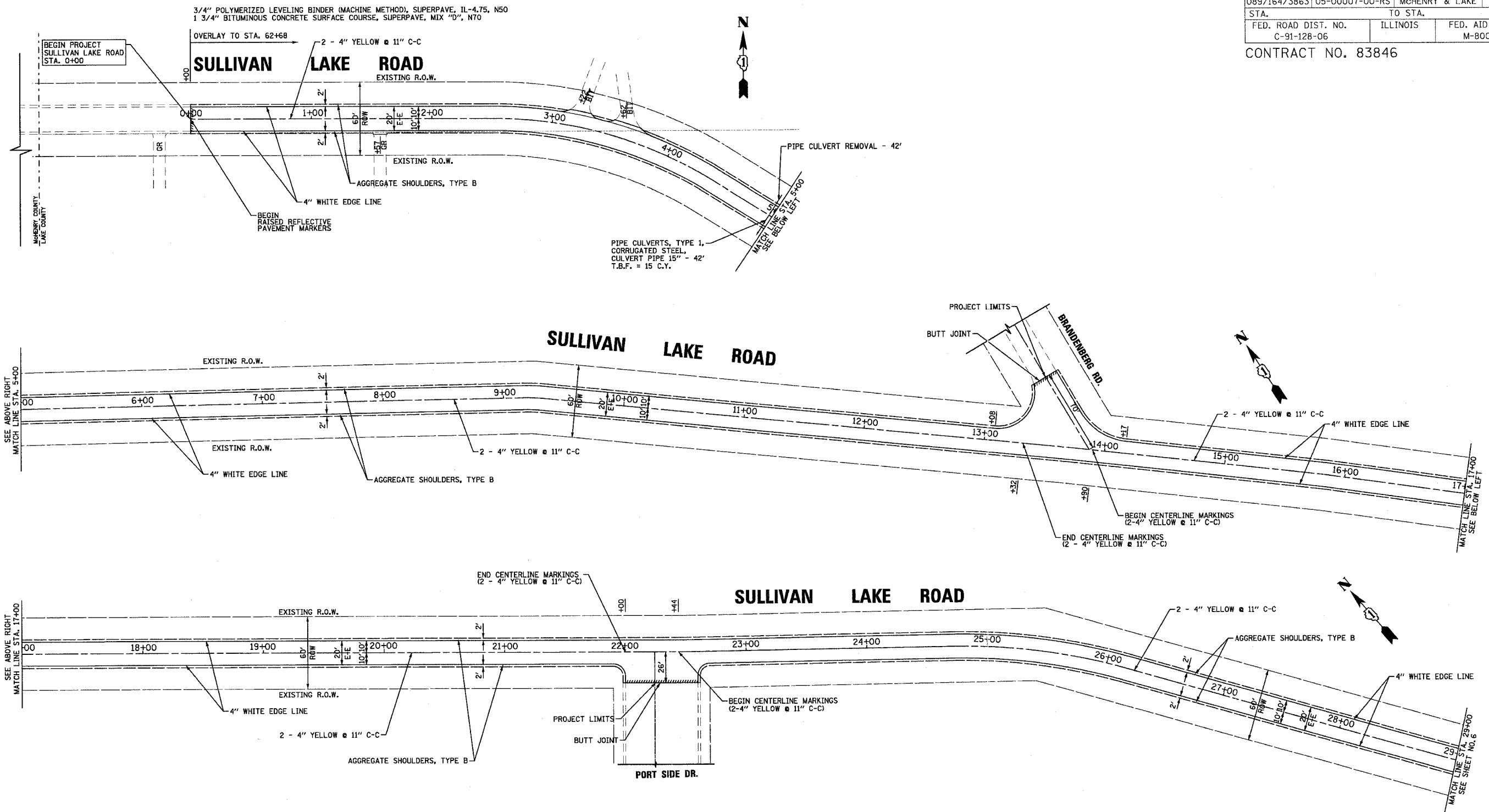
LINCOLN ROAD
STA. 16+50 TO STA. 27+12

DESIGNED BY	MWP	SCALE	1" = 40'
DRAWN BY	CJC	PROJECT NO.	050271
CHECKED BY	MWP	SHEET NO.	
DATE	11/15/05		

4 OF 15

F.A.U. RTE.	SECTION	COUNTY	TOTAL SHEETS	SHEET NO.
089/164/3863	05-00007-00-RS	McHENRY & LAKE	15	5
STA.	TO STA.			
FED. ROAD DIST. NO.	ILLINOIS	FED. AID PROJECT		
C-91-128-06		M-8003 (556)		

CONTRACT NO. 83846



488410 03/02/2006 09:25:57 AM I:\Nmr\050271\dgn\050271-pl.rvt
 C:\Program Files\Autodesk\AutoCAD 2006\BIN\ACAD.EXE
 LICENSE NO. 88-00021 - EXPIRES 4/30/2007

CONSULTANTS	REV. NO.	DATE	DESCRIPTION
BAXTER & WOODMAN Consulting Engineers	1	12/21/05	PER IDOT REVIEW

* REFER TO EQUIPMENT MANUFACTURER'S SHOP DRAWINGS

DRAWING FILE: ...050271\dgn\050271-pl.rvt

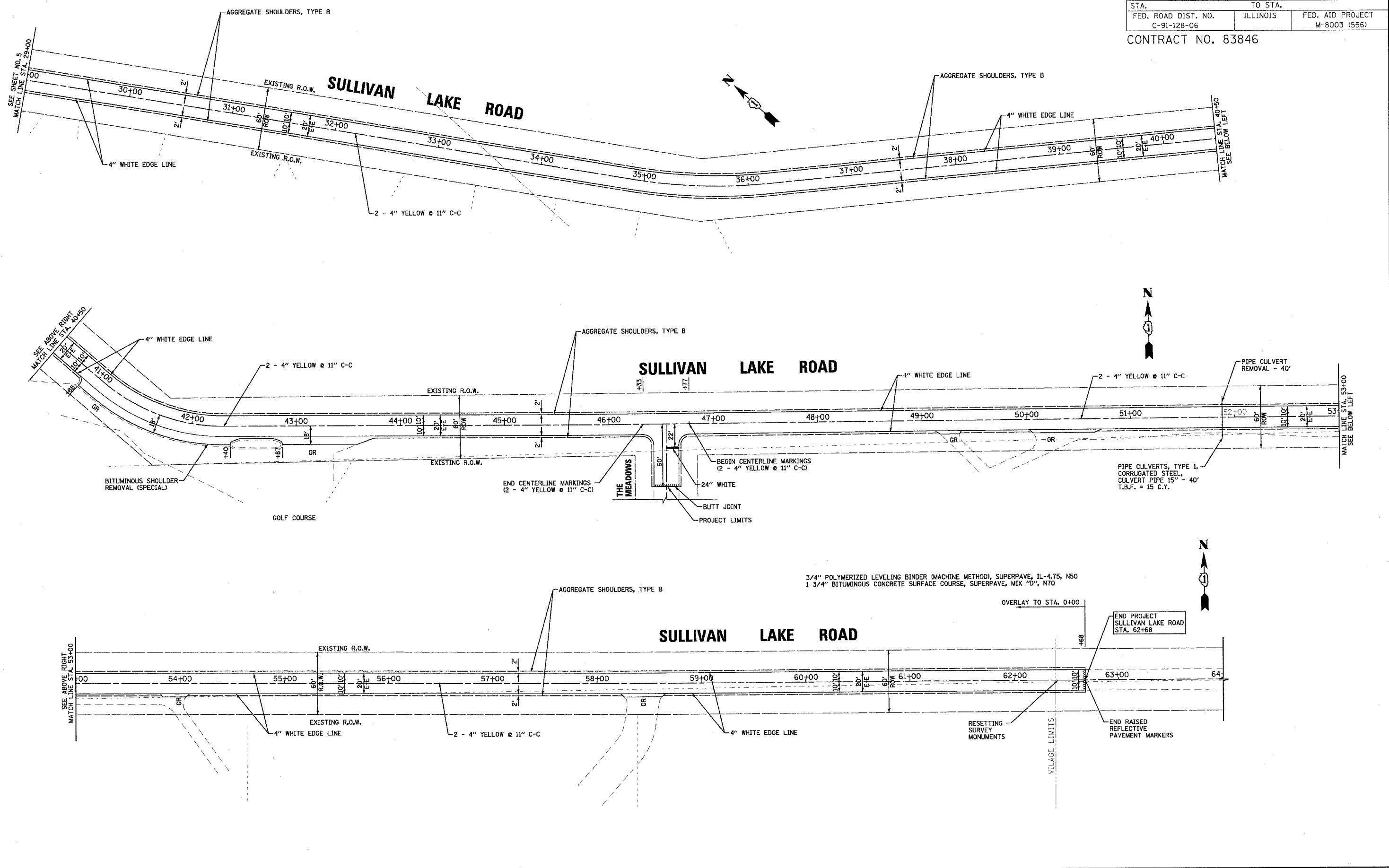
Baxter & Woodman
 Crystal Lake, Illinois 815.489.1290
 Burlington, Wisconsin 262.783.7834
 Mokena, Illinois 708.478.2090
 DeKalb, Illinois 815.787.3111
 Grayslake, Illinois 847.223.5088
 Rockford, Illinois 815.489.1551

VILLAGE OF LAKEMOOR, ILLINOIS
 LINCOLN ROAD, SULLIVAN LAKE ROAD & CUHLMAN ROAD
 STP (LAPP) IMPROVEMENTS

SULLIVAN LAKE ROAD
 STA. 0+00 TO STA. 29+00

DESIGNED BY	SCALE
MWP	1" = 40'
DRAWN BY	PROJECT NO.
CJC	050271
CHECKED BY	SHEET NO.
MWP	5 OF 15
DATE	
11/15/05	

CONTRACT NO. 83846



03/07/2005 09:56:55 AM
 I:\Users\050271\dgn\050271-p2.dgn
 STATE OF ILLINOIS - PROFESSIONAL DESIGN FIRM
 LICENSE NO. 384-00023 - EXPIRES 2/20/2007

CONSULTANTS	REV. NO.	DATE	DESCRIPTION
	1	12/21/05	PER IDOT REVIEW

* REFER TO EQUIPMENT MANUFACTURER'S SHOP DRAWINGS

DRAWING FILE: ...050271\dgns\050271-p2.sht

BAXTER
WOODMAN
Consulting Engineers

Baxter & Woodman
Crystal Lake, Illinois 815.488.1260
Burlington, Wisconsin 262.768.7894
Mokena, Illinois 708.478.8090
DeKalb, Illinois 815.787.8111
Graystone, Illinois 847.223.5088
Bookford, Illinois 815.488.1651

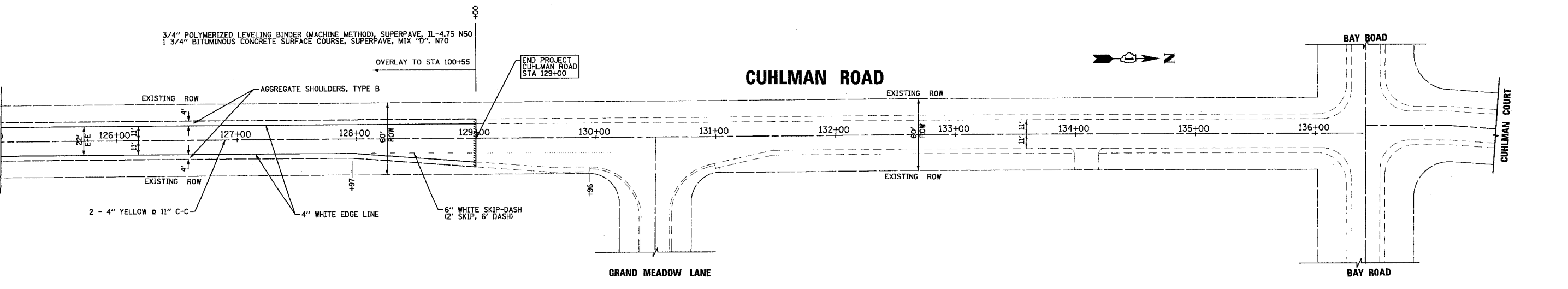
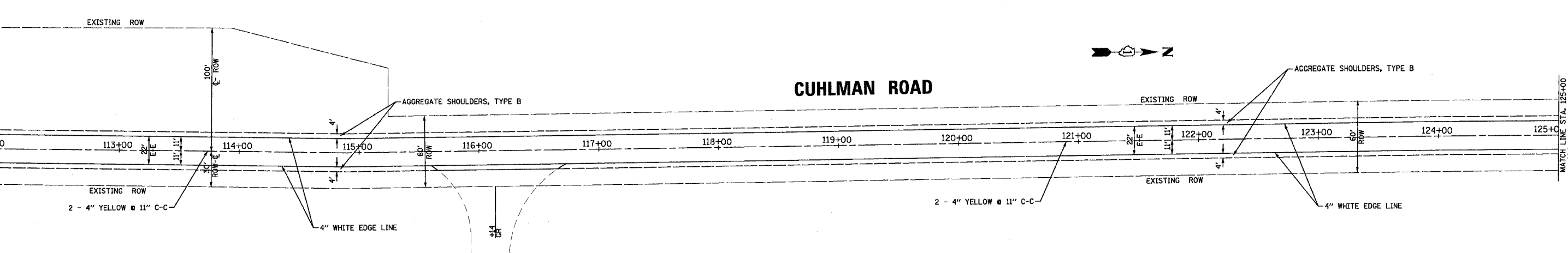
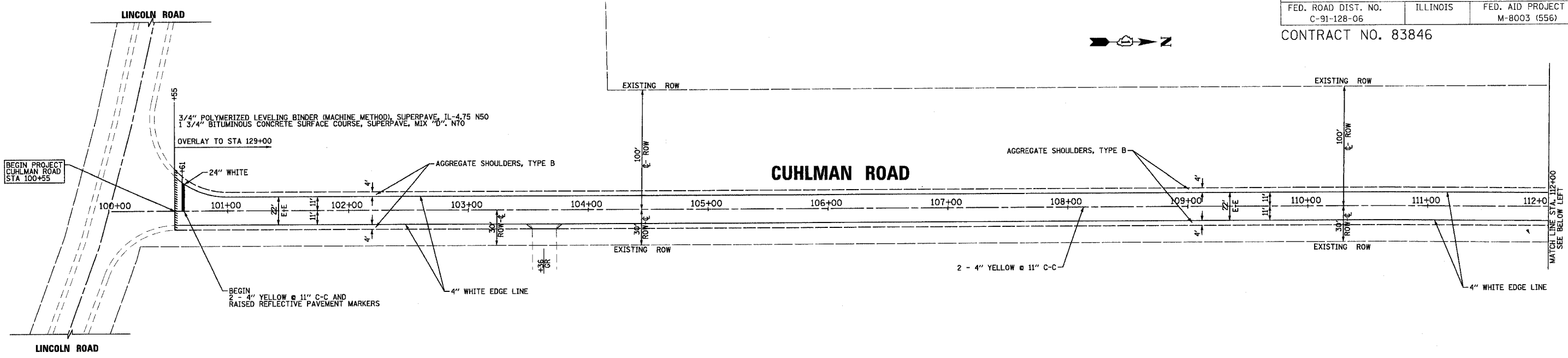
VILLAGE OF LAKEMOOR, ILLINOIS
LINCOLN ROAD, SULLIVAN LAKE ROAD & CUHLMAN ROAD
STP (LAPP) IMPROVEMENTS

SULLIVAN LAKE ROAD
STA. 29+00 TO STA. 62+68

DESIGNED BY	MWP	SCALE	1" = 40'
DRAWN BY	CJC	PROJECT NO.	050271
CHECKED BY	MWP	SHEET NO.	6 OF 15
DATE	11/15/05		

F.A.U. RTE.	SECTION	COUNTY	TOTAL SHEETS	SHEET NO.
089/164/3863	05-00007-00-RS	McHENRY & LAKE	15	7
STA.	TO STA.			
FED. ROAD DIST. NO.	ILLINOIS	FED. AID PROJECT		
C-91-128-06		M-8003 (556)		

CONTRACT NO. 83846



4/8/10 03/02/2006 09:26:00 AM I:\LMR\050271\dgn\050271-p5.dgn
 COPY RIGHT © 2006 BY BAXTER & WOODMAN, INC.
 LICENSE NO. - 84-00021 - EXPRESS 4/30/2007

CONSULTANTS	REV. NO.	DATE	DESCRIPTION
* REFER TO EQUIPMENT MANUFACTURER'S SHOP DRAWINGS			

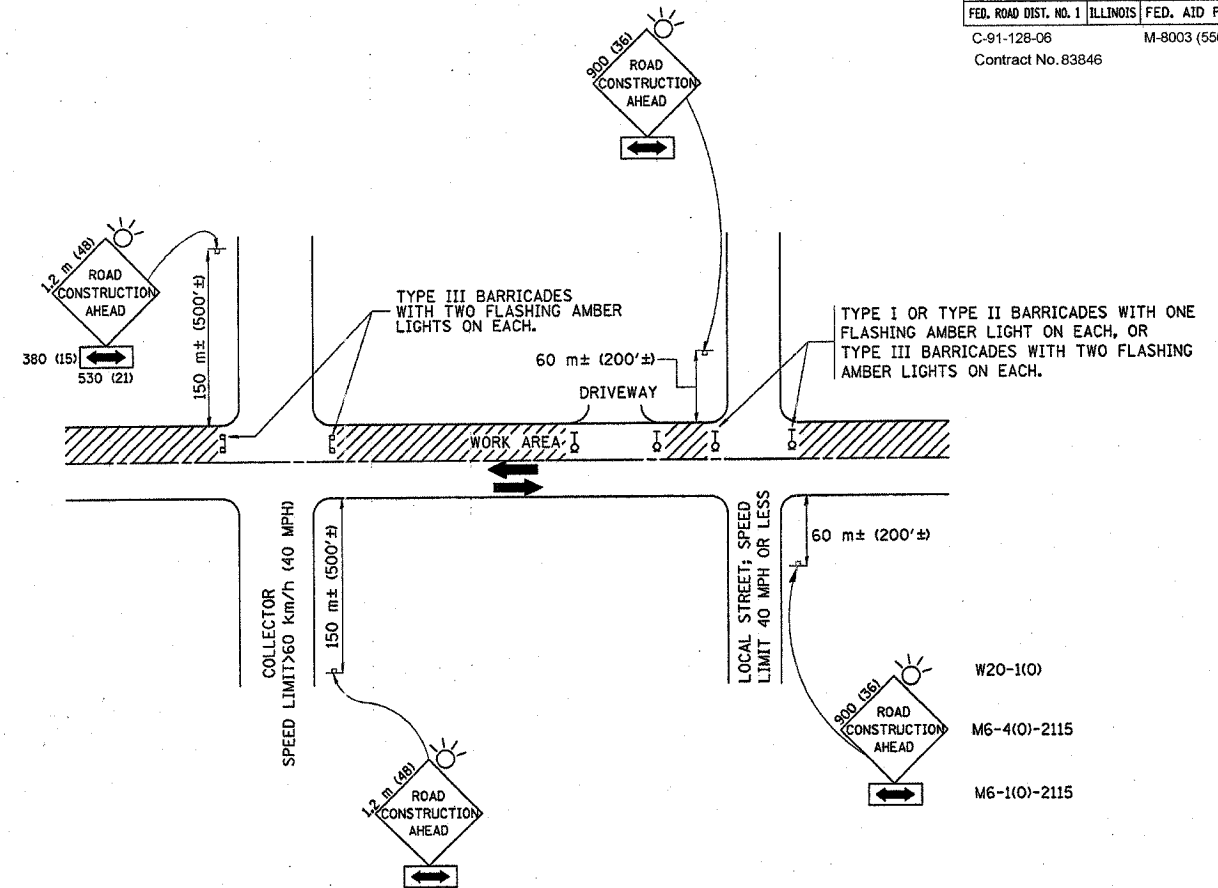
DRAWING FILE: ... \050271\dgn\050271-p5.dgn

BAXTER & WOODMAN
 Consulting Engineers

Baxter & Woodman
 Crystal Lake, Illinois 815.459.1280
 Burlington, Wisconsin 262.783.7834
 Mokena, Illinois 708.478.2090
 DeKalb, Illinois 815.787.3111
 Crystal Lake, Illinois 847.228.5088
 Rockford, Illinois 815.489.1851

VILLAGE OF LAKEMOOR, ILLINOIS
 LINCOLN ROAD, SULLIVAN LAKE ROAD & CUHLMAN ROAD
 STP (LAPP) IMPROVEMENTS

DESIGNED BY	SCALE
MWP	1" = 40'
DRAWN BY	PROJECT NO.
CJC	050271
CHECKED BY	SHEET NO.
MWP	7 OF 15
DATE	
11/15/05	



TRAFFIC CONTROL AND PROTECTION FOR SIDE ROADS, INTERSECTIONS, AND DRIVEWAYS

NOTES:

A. FOR NO LANE RESTRICTION ON THE SIDE ROAD OR DRIVEWAYS

1. SIDE ROAD WITH A SPEED LIMIT OF 60 km/h (40 MPH) OR LESS AS SHOWN ON THE DRAWING AND AS DIRECTED BY THE ENGINEER:
 - a) ONE ROAD CONSTRUCTION AHEAD SIGN 900x900 (36x36) WITH A FLASHER AND FLAG MOUNTED ON IT APPROXIMATELY 60 m (200') IN ADVANCE OF THE MAIN ROUTE.
 - b) THE CLOSED PORTION OF THE MAIN ROUTE SHALL BE PROTECTED BY BLOCKING WITH TYPE I, TYPE II OR TYPE III BARRICADES, 1/3 OF THE CROSS SECTION OF THE CLOSED PORTION.
2. SIDE ROAD WITH A SPEED LIMIT GREATER THAN 60 km/h (40 MPH) AS SHOWN ON THE DRAWING AND AS DIRECTED BY THE ENGINEER:
 - a) ONE ROAD CONSTRUCTION AHEAD SIGN 1.2 m x 1.2 m (48x48) WITH A FLASHER MOUNTED ON IT APPROXIMATELY 150 m (500') IN ADVANCE OF THE MAIN ROUTE.
 - b) THE CLOSED PORTION OF THE MAIN ROUTE SHALL BE PROTECTED BY BLOCKING WITH TYPE III BARRICADES, 1/2 OF THE CROSS SECTION OF THE CLOSED PORTION.
3. WHEN THE SIDE ROAD LIES BETWEEN THE BEGINNING OF THE MAINLINE SIGNING AND THE WORK ZONE, A SINGLE HEADED ARROW (M6-1) SHALL BE USED IN LIEU OF THE DOUBLE HEADED ARROW (M6-4).

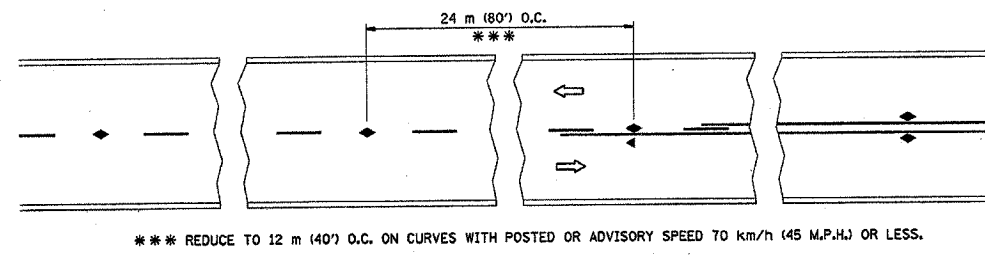
B. FOR A LANE CLOSURE ON A SIDE ROAD OR DRIVEWAY:

- USE APPLICABLE PORTIONS OF THE TYPICAL APPLICATION OF TRAFFIC CONTROL DEVICES (STD. T01501, STD. T01606 OR THE APPROPRIATE STANDARD). THE SPACING OF SIGNS AND BARRICADES SHALL BE ADJUSTED FOR FIELD CONDITIONS AS DIRECTED BY THE ENGINEER. THE DIRECTIONAL ARROW SHALL BE COVERED OR REMOVED WHEN NO LONGER CONSISTENT WITH THE SIDE ROAD LANE CLOSURE.
- C. ADVANCE WARNING SIGNS ARE TO BE OMITTED ON DRIVEWAY UNLESS OTHERWISE NOTED.
 - D. THE TRAFFIC CONTROL AND PROTECTION FOR SIDE ROADS, INTERSECTIONS, AND DRIVEWAYS SHALL BE INCIDENTAL TO THE COST OF SPECIFIED TRAFFIC CONTROL STANDARDS OR ITEMS.

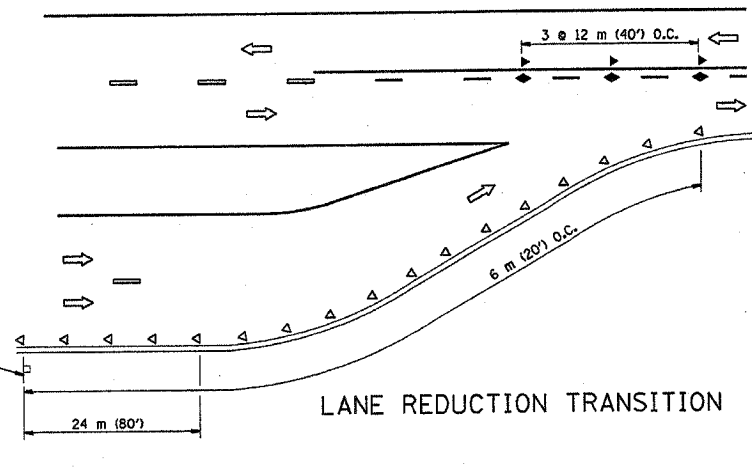
REVISIONS	
NAME	DATE
LHA	6/89
T. RAMMACHER	09/08/94
J. OBERLE	10/18/95
A. HOUSEH	03/06/96
A. HOUSEH	10/15/96
T. RAMMACHER	01/06/00

ILLINOIS DEPARTMENT OF TRANSPORTATION
**TRAFFIC CONTROL AND PROTECTION FOR
 SIDE ROADS, INTERSECTIONS, AND
 DRIVEWAYS**

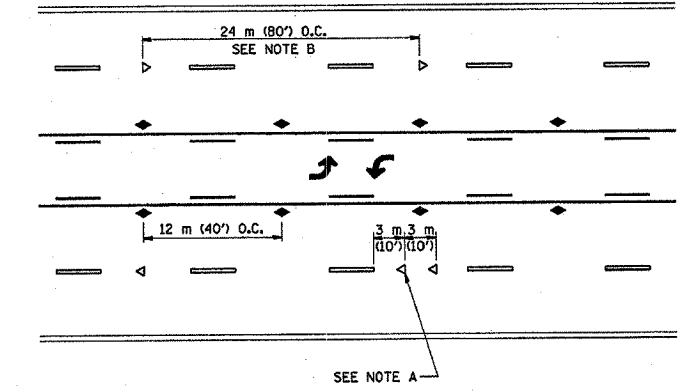
SCALE: VERT. _____ DRAWN BY _____
 HORIZ. _____ CHECKED BY _____
 DATE 12/04/2002 TC-10



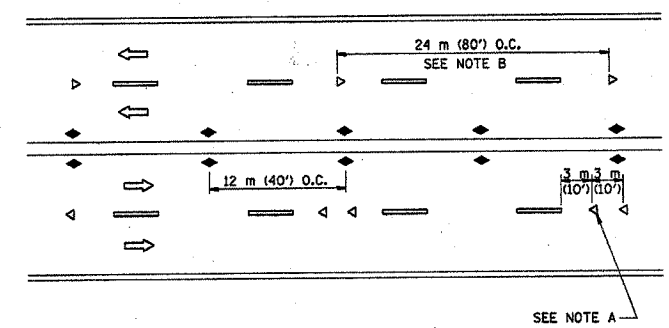
TWO-LANE/TWO-WAY



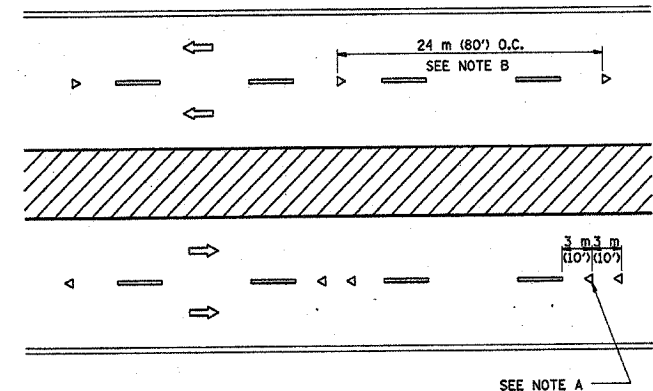
LANE REDUCTION TRANSITION



TWO-WAY LEFT TURN



MULTI-LANE/UNDIVIDED



MULTI-LANE/DIVIDED

GENERAL NOTES

1. MARKERS USED WITH DASHED LINES SHALL BE CENTERED IN THE GAP BETWEEN SEGMENTS.
2. MARKERS USED ADJACENT TO SOLID LINES SHALL BE OFFSET 50 TO 75 (2 TO 3) TOWARD TRAFFIC AS SHOWN.
3. MARKERS THROUGH TANGENTS LESS THAN 150 m (500') IN LENGTH BETWEEN CURVES SHALL BE INSTALLED AT THE LESSER OF THE TWO CURVE SPACINGS.

SYMBOLS

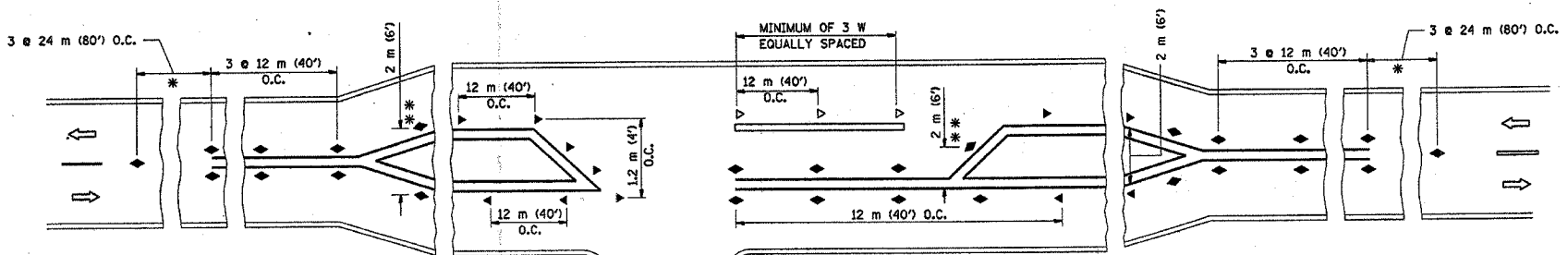
- YELLOW STRIPE
- WHITE STRIPE
- ◀ ONE-WAY AMBER MARKER
- ◁ ONE-WAY CRYSTAL MARKER (W/O)
- ◆ TWO-WAY AMBER MARKER

LANE MARKER NOTES

- B. REDUCE TO 12 m (40') O.C. ON CURVES WHERE ADVISORY SPEEDS ARE 20 km/h (10 M.P.H.) LOWER THAN POSTED SPEEDS.
- A. USE DOUBLE LANE LINE MARKERS SPACED AS SHOWN.

DESIGN NOTES

1. DOUBLE LANE LINE MARKERS SHALL BE USED UNLESS SPECIFIED OTHERWISE.
2. EXCEPT AS SHOWN ON THE LANE REDUCTION TRANSITION AND FREEWAY EXIT RAMP DETAIL, MARKERS ARE NOT TO BE SPECIFIED ON RIGHT EDGE LINES.
3. THE EXACT MARKER LIMITS, SPACING, AND COLOR SHOULD BE INCLUDED IN THE PLANS.
4. MARKERS SHOULD NOT BE USED ALONGSIDE CURBS EXCEPT FOR EXTREMELY SHORT SECTIONS OF CURBS WHERE NOT MORE THAN TWO MARKERS WOULD BE INVOLVED.



LEFT TURN

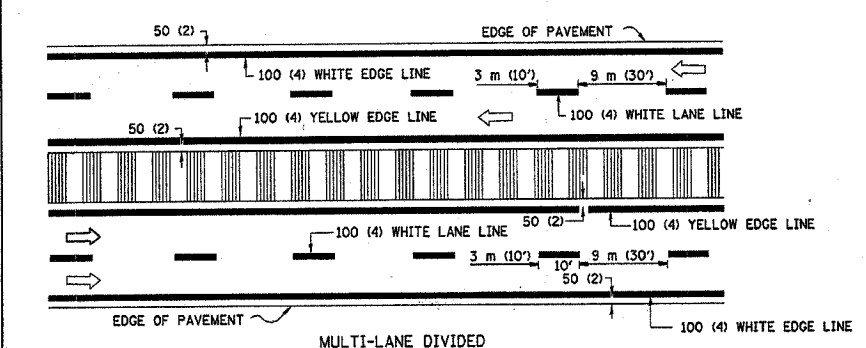
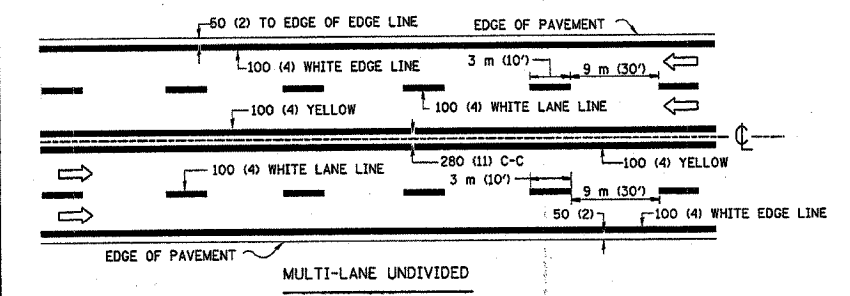
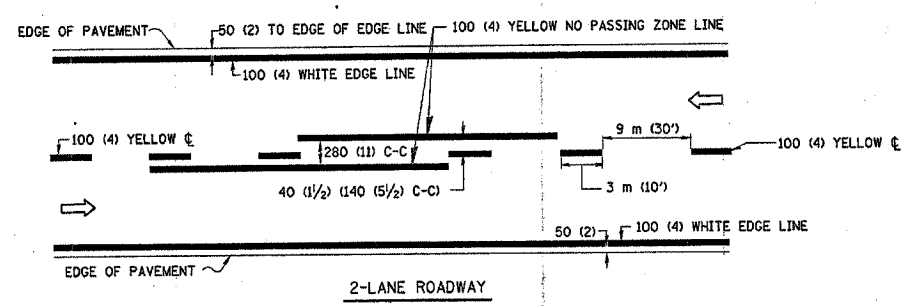
- * SEE TWO-LANE/TWO-WAY WHERE MARKERS CONTINUE
- ** WHERE THE MEDIAN WIDTH IS 2 m (6') OR LESS USE TWO-WAY MARKERS.

All dimensions are in millimeters (Inches) unless otherwise shown.

ILLINOIS DEPARTMENT OF TRANSPORTATION
TYPICAL APPLICATIONS
RAISED REFLECTIVE PAVEMENT MARKERS
(SNOW-PLOW RESISTANT)

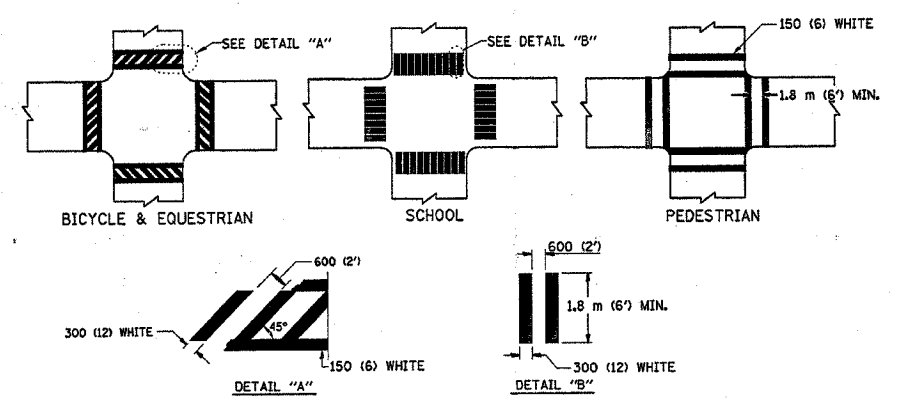
REVISIONS	
NAME	DATE
T. RAMMACHER	09-19-94
T. RAMMACHER	03-12-99
T. RAMMACHER	01-06-00

SCALE: NONE
DATE: 12/04/2002
DRAWN BY CADD
CHECKED BY
TC-II

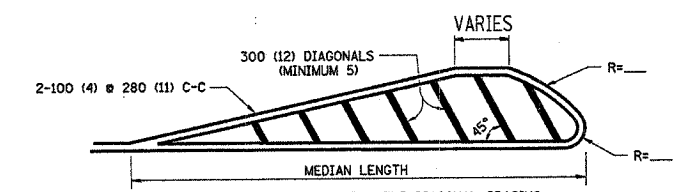
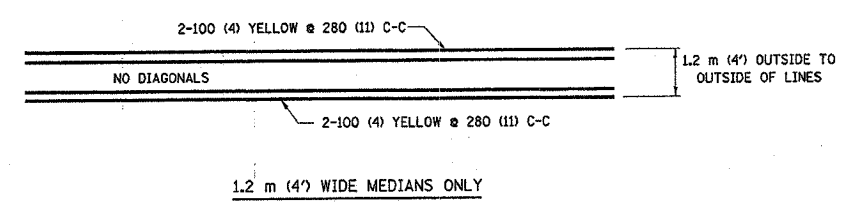


NOTE: MEDIANS WITH BARRIER CURBS DO NOT REQUIRE AN EDGE LINE

TYPICAL LANE AND EDGE LINE MARKING



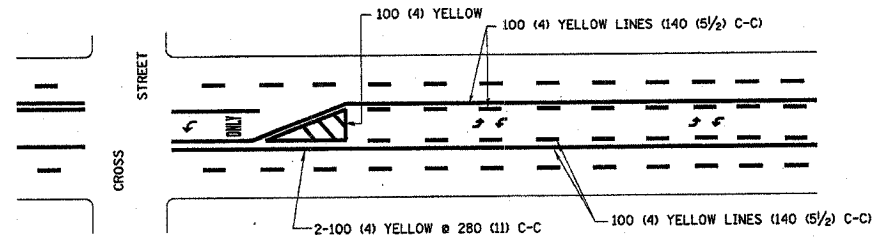
TYPICAL CROSSWALK MARKING



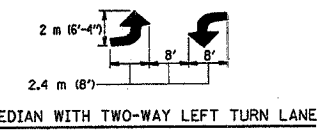
FOR MEDIAN LENGTHS WHERE DIAGONAL SPACING CANNOT BE ATTAINED, USE 5 (FIVE) EQUALLY SPACED DIAGONAL LINES.

DIAGONAL LINE SPACING: 15 m (50') C-C (LESS THAN 50 km/h (30 MPH))
 25 m (75') C-C (50 km/h (30 MPH) TO 70 km/h (45 MPH))
 45 m (150') C-C (MORE THAN 70 km/h (45 MPH))

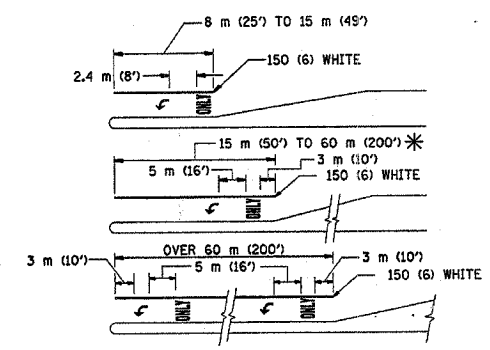
MEDIANS OVER 1.2 m (4') WIDE



A MINIMUM OF TWO PAIRS OF TURN ARROWS SHALL BE USED, WHITE IN COLOR. ADDITIONAL PAIRS SHALL BE PLACED AT 60 m (200') TO 90 m (300') INTERVALS.



TYPICAL PAINTED MEDIAN MARKING

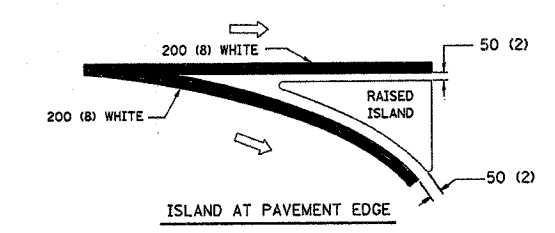
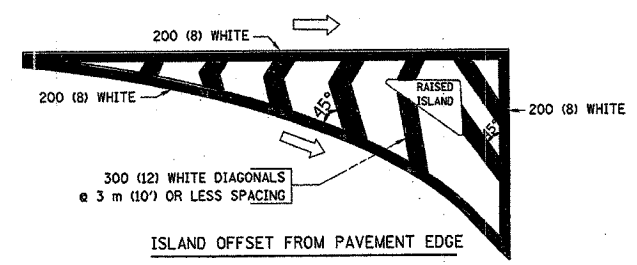


FULL SIZE LETTERS 2.4 m (8') AND ARROWS SHALL BE USED.
 * AREA = 1.5 m² (15.6 SQ. FT.) ONLY AREA = 1.9 m² (20.8 SQ. FT.)

* TURN LANES IN EXCESS OF 120 m (400') IN LENGTH MAY HAVE AN ADDITIONAL SET OF ARROW - "ONLY" INSTALLED MIDWAY BETWEEN THE OTHER TWO SETS OF ARROW - "ONLY".

TYPICAL LEFT (OR RIGHT) TURN LANE

TYPICAL TURN LANE MARKING



TYPICAL ISLAND MARKING

TYPE OF MARKING	WIDTH OF LINE	PATTERN	COLOR	SPACING / REMARKS
CENTERLINE ON 2 LANE PAVEMENT	100 (4)	SKIP-DASH	YELLOW	3 m (10') LINE WITH 9 m (30') SPACE
CENTERLINE ON MULTI-LANE UNDIVIDED PAVEMENT	2 @ 100 (4)	SOLID	YELLOW	280 (11) C-C
NO PASSING ZONE LINES FOR ONE DIRECTION FOR BOTH DIRECTIONS	100 (4) 2 @ 100 (4)	SOLID SOLID	YELLOW YELLOW	140 (5 1/2) C-C FROM SKIP-DASH CENTERLINE 280 (11) C-C OMIT SKIP-DASH CENTERLINE BETWEEN
LANE LINES	100 (4) 125 (5) ON FREEWAYS	SKIP-DASH SKIP-DASH	WHITE WHITE	3 m (10') LINE WITH 9 m (30') SPACE
DOTTED LINES (EXTENSIONS OF CENTER, LANE OR TURN LANE MARKINGS)	SAME AS LINE BEING EXTENDED	SKIP-DASH	SAME AS LINE BEING EXTENDED	600 (2') LINE WITH 1.8 m (6') SPACE
EDGE LINES	100 (4)	SOLID	YELLOW-LEFT WHITE-RIGHT	OUTLINE MOUNTABLE MEDIANS IN YELLOW; EDGE LINES ARE NOT USED NEXT TO BARRIER CURB
TURN LANE MARKINGS	150 (6) LINE; FULL SIZE LETTERS & SYMBOLS (2.4 m (8'))	SOLID	WHITE	SEE TYPICAL TURN LANE MARKING DETAIL
TWO WAY LEFT TURN MARKING	2 @ 100 (4) EACH DIRECTION 2.4 m (8') LEFT ARROW	SKIP-DASH AND SOLID IN PAIRS	YELLOW WHITE	3 m (10') LINE WITH 9 m (30') SPACE FOR SKIP-DASH; 140 (5 1/2) C-C BETWEEN SOLID LINE AND SKIP-DASH LINE SEE TYPICAL TWO-WAY LEFT TURN MARKING DETAIL
CROSSWALK LINES (PEDESTRIAN) A. DIAGONALS (BIKE & EQUESTRIAN) B. LONGITUDINAL BARS (SCHOOL)	2 @ 150 (6) 300 (12) @ 45° 300 (12) @ 90°	SOLID SOLID SOLID	WHITE WHITE WHITE	NOT LESS THAN 1.8 m (6') APART 600 (2') APART SEE TYPICAL CROSSWALK MARKING DETAILS.
STOP LINES	600 (24)	SOLID	WHITE	PLACE 1.2 m (4') IN ADVANCE OF AND PARALLEL TO CROSSWALK, IF PRESENT. OTHERWISE, PLACE AT DESIRED STOPPING POINT, PARALLEL TO CROSSROAD CENTERLINE, WHERE POSSIBLE
PAINTED MEDIANS	2 @ 100 (4) WITH 300 (12) DIAGONALS @ 45° NO DIAGONALS USED FOR 1.2 m (4') WIDE MEDIANS	SOLID	YELLOW; TWO WAY TRAFFIC WHITE; ONE WAY TRAFFIC	280 (11) C-C FOR THE DOUBLE LINE SEE TYPICAL PAINTED MEDIAN MARKING.
GORE MARKING AND CHANNELIZING LINES	200 (8) WITH 300 (12) DIAGONALS @ 45°	SOLID	WHITE	DIAGONALS: 4.5 m (15') C-C (LESS THAN 50 km/h (30 MPH)) 6 m (20') C-C (50 km/h (30 MPH) TO 70 km/h (45 MPH)) 9 m (30') C-C (OVER 70 km/h (45 MPH))
RAILROAD CROSSING	600 (24) TRANSVERSE LINES; "RR" IS 1.8 m (6') LETTERS; 400 (16) LINE FOR "X"	SOLID	WHITE	SEE STATE STANDARD 780001 AREA OF: "R"=0.33m ² (3.6 SQ. FT.) EACH "X"=5.0 m ² (54.0 SQ. FT.)
SHOULDER DIAGONALS	300 (12) @ 45°	SOLID	WHITE - RIGHT YELLOW - LEFT	15 m (50') C-C (LESS THAN 50 km/h (30 MPH)) 25 m (75') C-C (50 km/h (30 MPH) TO 70 km/h (45 MPH)) 45 m (150') C-C (OVER 70 km/h (45 MPH))

FOR FURTHER DETAILS ON PAVEMENT MARKING REFER TO STANDARD SPECIFICATIONS FOR ROAD AND BRIDGE CONSTRUCTION AND STATE STANDARD 780001.

All dimensions are in millimeters (inches) unless otherwise shown.

ILLINOIS DEPARTMENT OF TRANSPORTATION

DISTRICT ONE

TYPICAL PAVEMENT MARKINGS

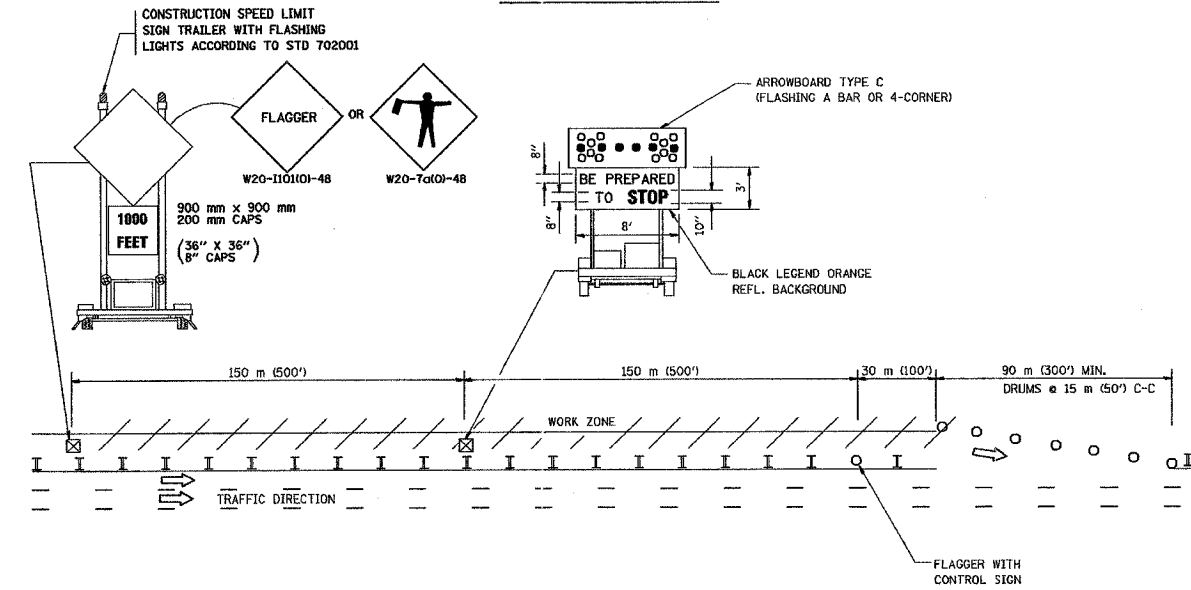
REVISIONS	NAME	DATE
	EVERS	03-19-90
	T. RAMMACHER	10-27-94
	ALEX HOUSEH	10-09-96
	ALEX HOUSEH	10-17-96
	T. RAMMACHER	01-06-00

SCALE: NONE
 DATE 12/04/2002
 DRAWN BY CADD
 CHECKED BY
 TC-13

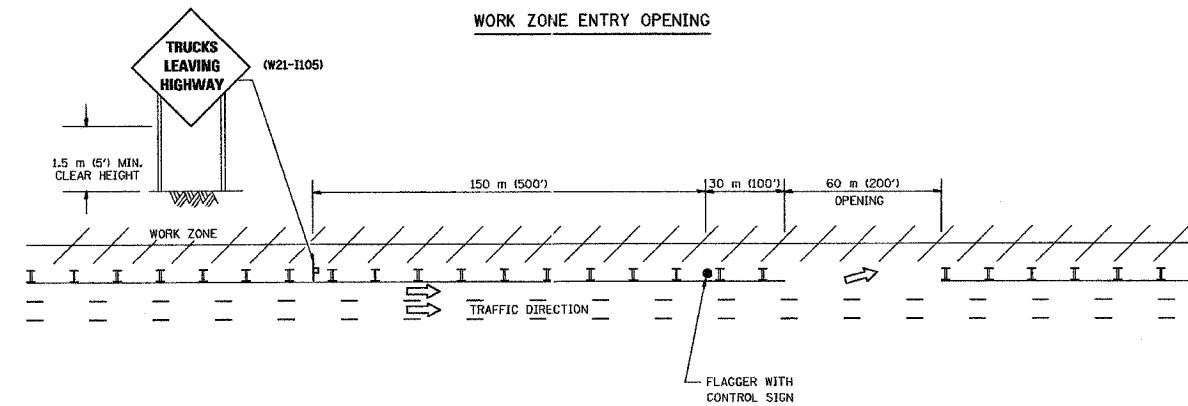
F.A. RTE.	SECTION	COUNTY	TOTAL SHEETS	SHEET NO.
089/164	05-00007-00-85	McHENRY/LAKE	15	11
STA.	TO STA.			
FED. ROAD DIST. NO.	ILLINOIS	FED. AID PROJECT		
C-81-128-06	MA 8003.15561			
CONTRACT NO. 83846				

SIGNING FOR FLAGGING OPERATIONS AT WORK ZONE OPENINGS

WORK ZONE EXIT OPENING



WORK ZONE ENTRY OPENING



NOTES:

1. The Arrowboard, the Flagger Ahead trailer mounted sign, and the Trucks Leaving Highway sign shall be removed or turned away from traffic and the exit and entry openings shall be closed when the flagging operation ceases.
2. Work Zone Exit Openings should be a minimum of one half mile apart.
3. Exiting the work zone at any place other than at a Work Zone Exit Opening will be prohibited.
4. All vehicles shall enter the work zone at entry openings, using their turn signals to warn motorists.

ALL DIMENSIONS ARE IN MILLIMETERS (INCHES) UNLESS OTHERWISE SHOWN

ILLINOIS DEPARTMENT OF TRANSPORTATION

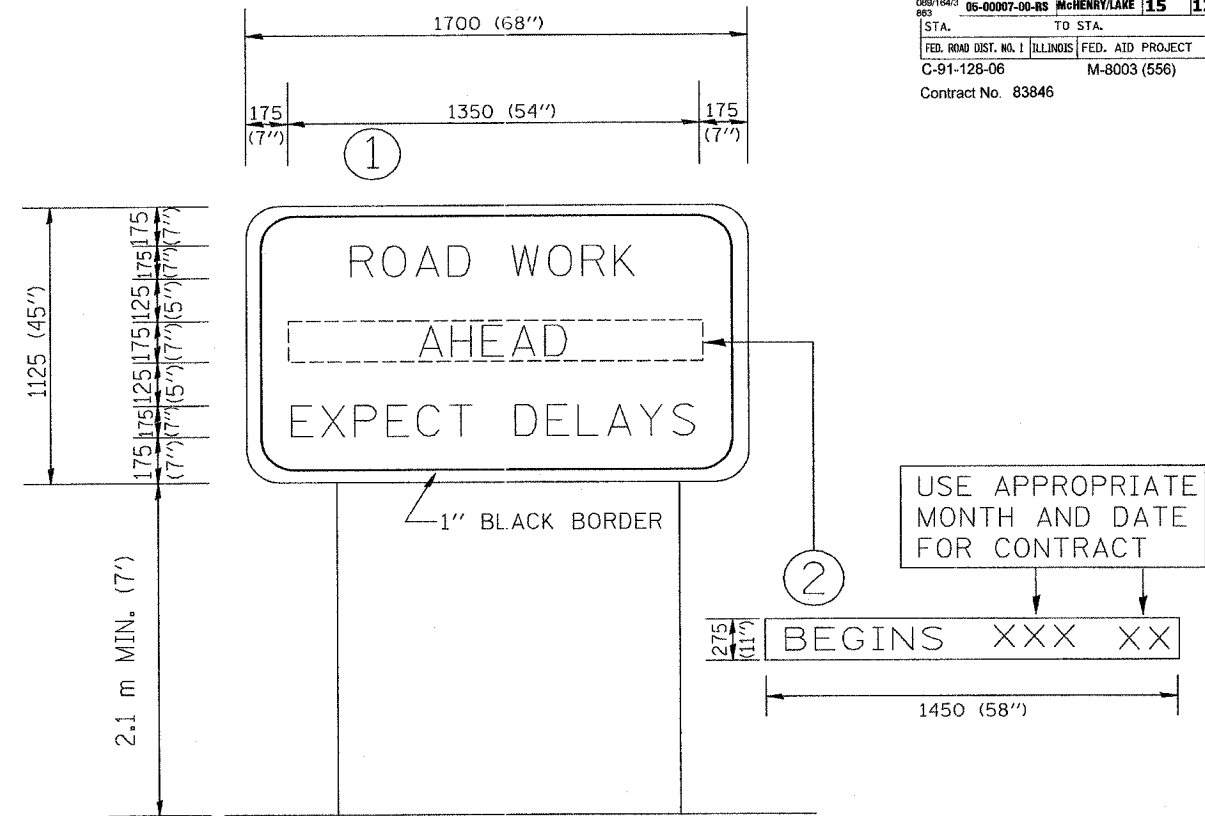
SIGNING FOR FLAGGING OPERATIONS AT WORK ZONE OPENINGS

REVISIONS	
NAME	DATE
DWS	8/98
JAF	4/03

SCALE: NONE
DATE 05/06/2003

DRAWN BY CADD
CHECKED BY

F.A. RTE.	SECTION	COUNTY	TOTAL SHEETS	SHEET NO.
089184/0 883	06-00007-00-RS	McHENRY/LAKE	15	12
STA.	TO STA.			
FED. ROAD DIST. NO. 1	ILLINOIS	FED. AID PROJECT		
C-91-128-06	M-8003 (556)			
Contract No. 83846				



NOTES:

1. USE BLACK LETTERING ON ORANGE BACKGROUND.
2. ERECT SIGNS IN ADVANCE OF THE LOCATION FOR THE "ROAD CONSTRUCTION AHEAD" SIGN AT LOCATIONS AS DIRECTED BY THE ENGINEER.
3. ERECT SIGN ① WITH INSTALLED PANEL ② ONE WEEK PRIOR TO THE START OF CONSTRUCTION.
4. REMOVE PANEL ② SOON AFTER THE START OF CONSTRUCTION.
5. SEE SPECIAL PROVISION FOR "TEMPORARY INFORMATION SIGNING" FOR ADDITIONAL INFORMATION.
6. ONE SIGN ASSEMBLY EQUALS 2.3 SQ. M. (25.70 SQ. FT.)

ALL DIMENSIONS ARE IN MILLIMETERS (INCHES)
UNLESS OTHERWISE SHOWN.

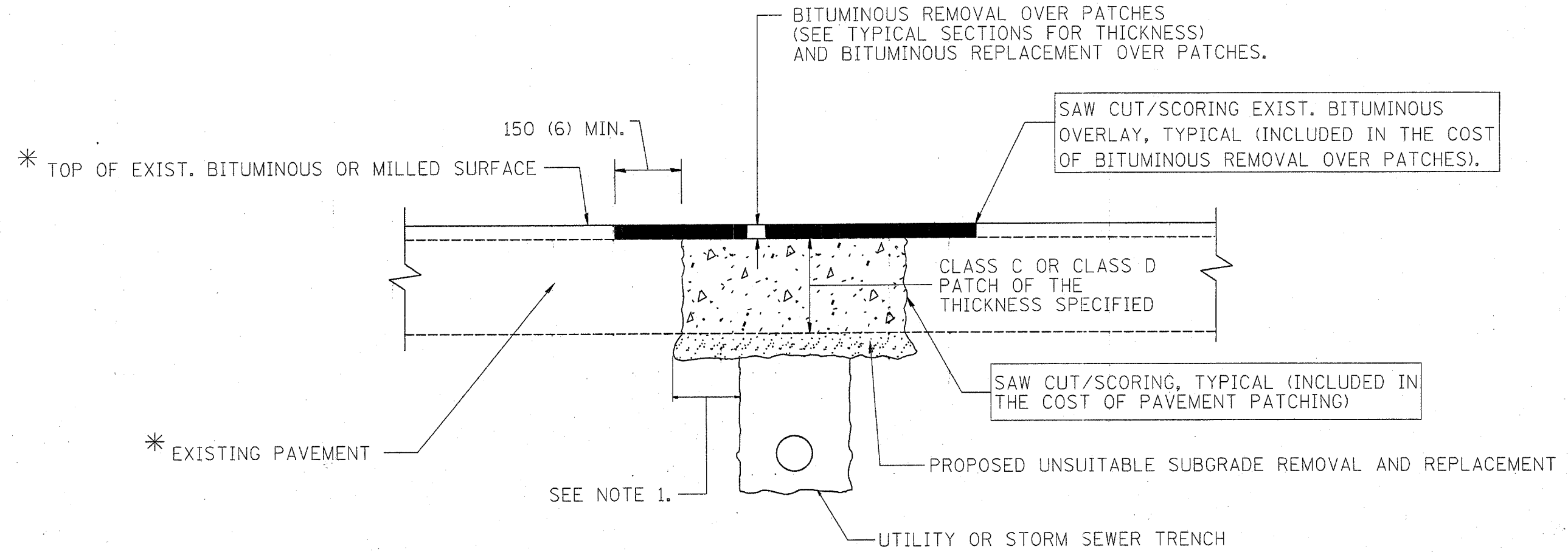
REVISIONS	
NAME	DATE
R. MIRS	9-15-97
R. MIRS	12-11-97
T. RAMMACHER	2-2-99

ILLINOIS DEPARTMENT OF TRANSPORTATION
TEMPORARY INFORMATION SIGNING

SCALE:
DATE 10/18/2002

DRAWN BY: BUR. OF DESIGN
CHECKED BY:

TC22
REVISION DATE: 02/02/99



* SEE TYPICAL SECTIONS FOR THICKNESS AND MATERIALS

NOTES:

1. THE WIDTH OF THE FULL DEPTH PATCH OVER A TRENCH SHALL BE 300 (12) WIDER ON EACH SIDE OF THE TRENCH.
2. FOR METHOD OF MEASUREMENT AND BASIS OF PAYMENT, SEE SPECIAL PROVISION "PATCHING WITH BITUMINOUS OVERLAY REMOVAL".

SEQUENCE OF CONSTRUCTION

1. REMOVE THE EXISTING BITUMINOUS MATERIAL OVER THE AREA TO BE PATCHED.
2. REMOVE AND REPLACE FULL DEPTH PATCHES
3. REPLACE BITUMINOUS MATERIAL OVER THE AREA TO BE PATCHED.

ALL DIMENSIONS ARE IN MILLIMETERS (INCHES) UNLESS OTHERWISE SHOWN.

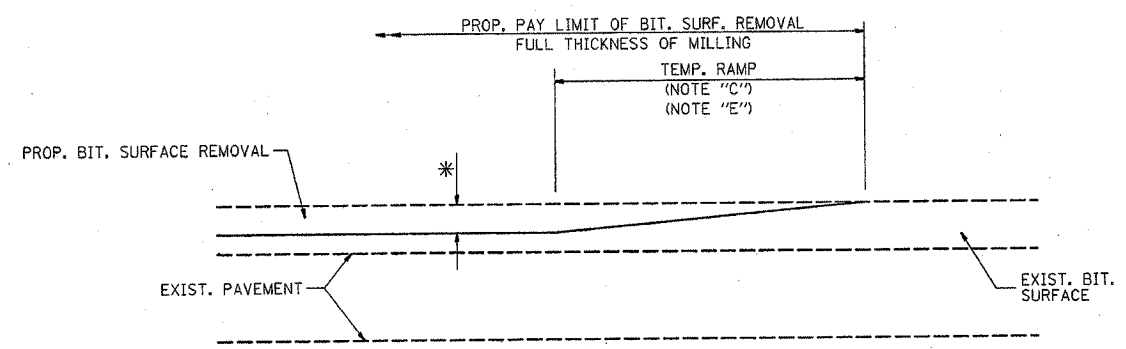
ILLINOIS DEPARTMENT OF TRANSPORTATION

PAVEMENT PATCHING FOR BITUMINOUS SURFACED PAVEMENT

REVISIONS		REVISIONS	
NAME	DATE	NAME	DATE
R. SHAH	10/25/94	ART ABBAS	04/27/98
R. SHAH	01/14/95		
R. SHAH	03/23/95		
R. SHAH	04/24/95		
A. HOUSEH	03/15/96		
A. ABBAS	03/21/97		
A. ABBAS	01/20/98		

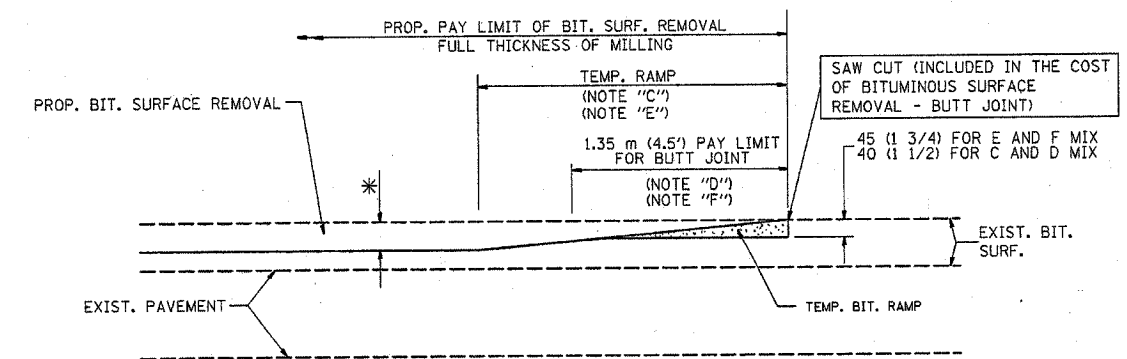
SCALE: NONE
DATE 12/04/2002
DRAWN BY
CHECKED BY

F.A. NO.	SECTION	COUNTY	TOTAL SHEETS	SHEET NO.
0891041 3883	05-0007-00-RS	McHENRY/LAK	15	14
STA.	TO STA.			
FED. ROAD DIST. NO.	ILLINOIS	FED. AID PROJECT		
C-91-128-06		M-8003 (556)		
Contract No. 83846				



MILLED TEMPORARY RAMP
(FOR BUTT JOINT AND BIT. TAPER SEE DETAIL BELOW)

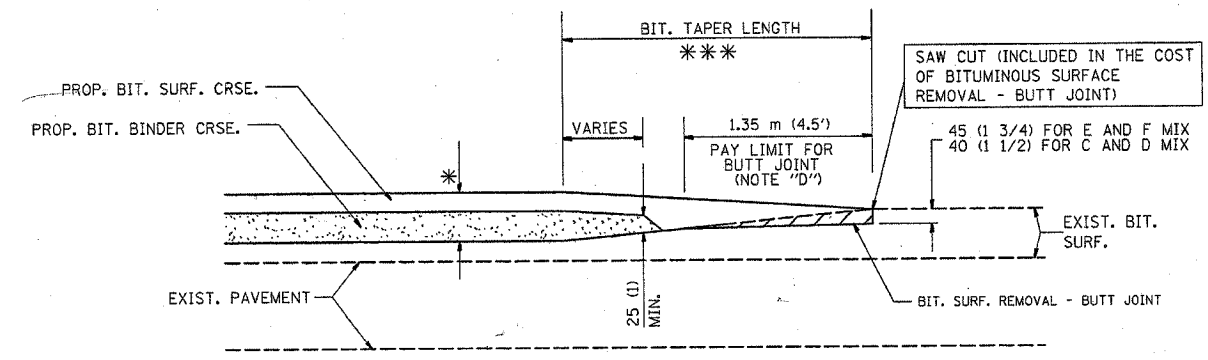
OPTION 1



BITUMINOUS CONSTRUCTED TEMPORARY RAMP
(FOR BUTT JOINT AND BIT. TAPER SEE DETAIL BELOW)

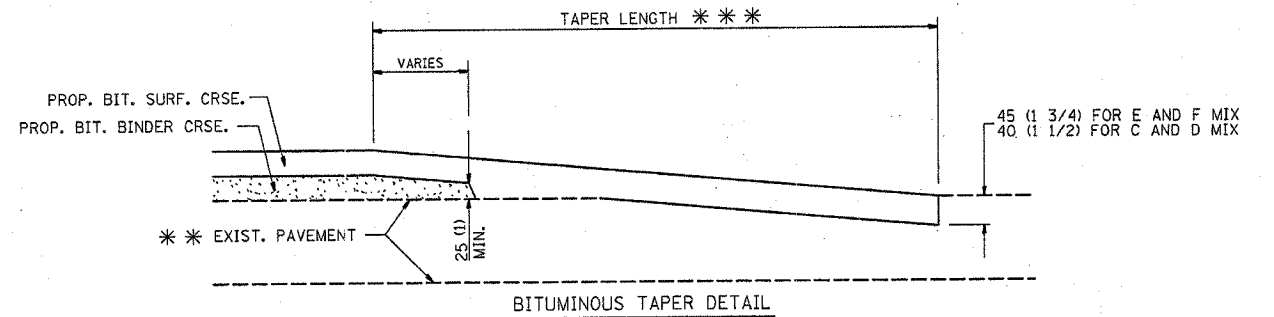
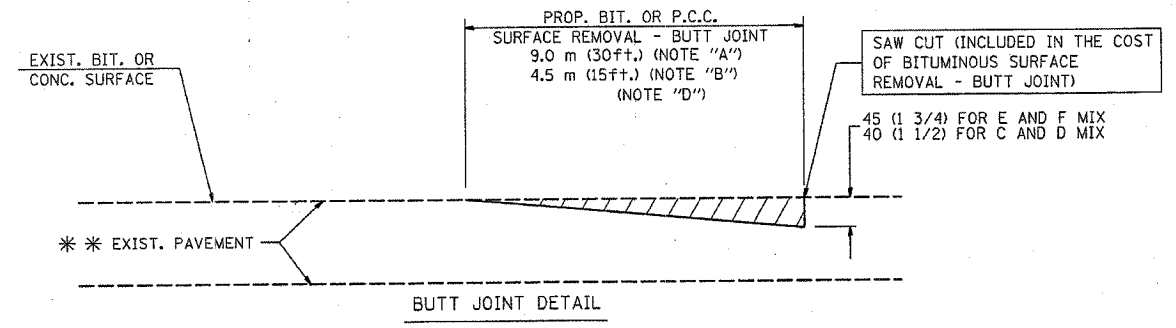
OPTION 2

TYPICAL TEMPORARY RAMP



BUTT JOINT AND BITUMINOUS TAPER

TYPICAL BUTT JOINT AND BITUMINOUS TAPER FOR MILLING AND RESURFACING



TYPICAL BUTT JOINT AND BITUMINOUS TAPER FOR RESURFACING ONLY

** PC CONCRETE, BITUMINOUS OR BITUMINOUS RESURFACED PAVEMENT.

NOTES

- A: MAINLINE ROADWAYS AND MAJOR SIDE ROADS.
 - B: MINOR SIDE ROADS.
 - C: THE TEMP. RAMP SHALL BE CONSTRUCTED IMMEDIATELY UPON REMOVAL OF THE EXISTING BITUMINOUS SURFACE.
 - D: THE BUTT JOINT SHALL BE CONSTRUCTED IMMEDIATELY PRIOR TO PLACING THE PROPOSED BITUMINOUS COURSES.
 - E: TAPER THE TEMP. RAMP AT A RATE OF 900 (3 ft.) PER INCH OF MILLING THICKNESS.
 - F: INSTALLATION AND REMOVAL OF THE 1.35 m (4.5') TEMP. BIT. RAMP WILL BE PAID AS "BITUMINOUS SURFACE REMOVAL - BUTT JOINT".
 - G: SEE ARTICLE 406.18 AND 406.24 OF THE STANDARD SPECIFICATIONS FOR "BITUMINOUS AND PCC SURFACE REMOVAL, BUTT JOINT".
- * SEE TYPICAL SECTIONS FOR MILLING THICKNESS.
- *** 6.1 m (20') PER 25 (1) RESURFACING (NOTE "A")
3.0 m (10') PER 25 (1) RESURFACING (NOTE "B")

ALL DIMENSIONS ARE IN MILLIMETERS (INCHES) UNLESS OTHERWISE SHOWN.

BASIS OF PAYMENT:

THE BUTT JOINT WILL BE PAID FOR PER SQUARE METER (SQUARE YARD.) AS "BITUMINOUS SURFACE REMOVAL - BUTT JOINT" OR AS "PORTLAND CEMENT CONCRETE SURFACE REMOVAL - BUTT JOINT".

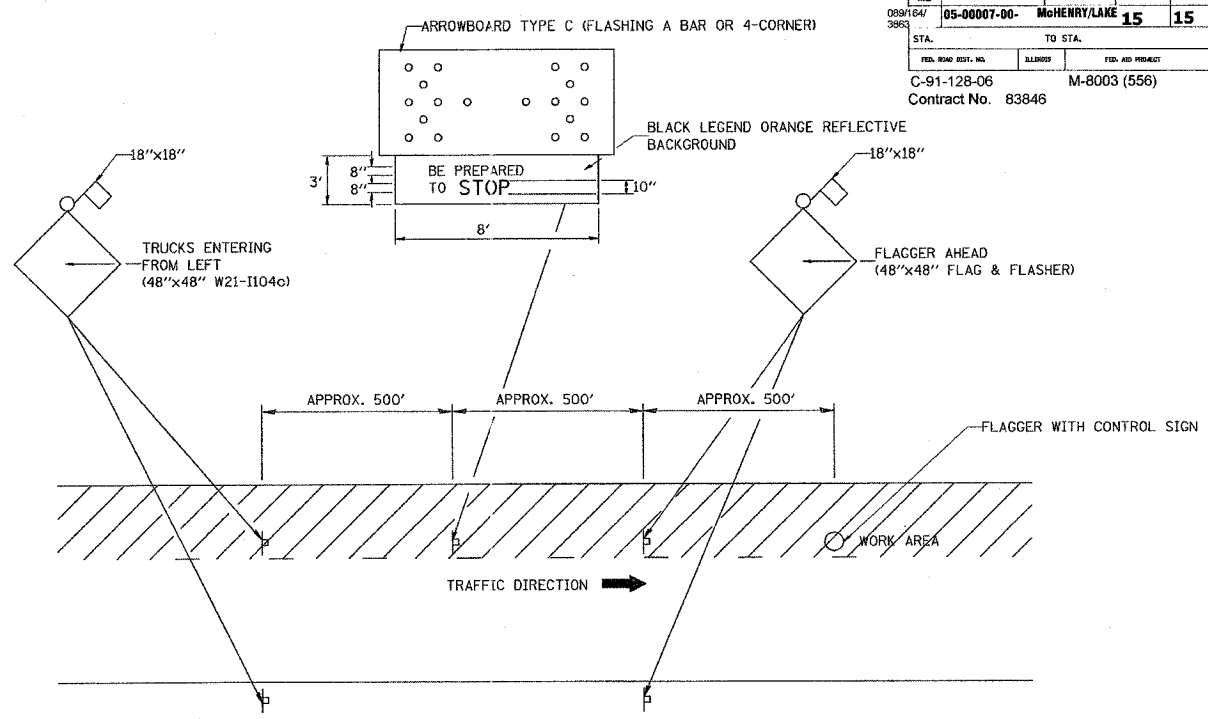
REVISIONS	
NAME	DATE
M. DE YONG	6-13-90
M. DE YONG	7-3-90
M. DE YONG	3-27-92
R. SHAH	09/09/94
R. SHAH	10/25/94
A. ABBAS	03/21/97
M. GOMEZ	04/06/01

ILLINOIS DEPARTMENT OF TRANSPORTATION

BUTT JOINT AND BITUMINOUS TAPER DETAILS

SCALE: NONE
DATE PLOTTED: 12/04/2002
DRAWN BY
CHECKED BY
BD400-05 (VI-BD32)
REVISION DATE: 04/06/01

F.A. NO.	SECTION	COUNTY	TOTAL SHEETS	SHEET NO.
088164/3963	05-0007-00-	MOHENTY/LAKE	15	15
STA.	TO STA.			
FED. ROAD DIST. NO.	ALIGNED	FED. AID PROJECT		
C-91-128-06		M-8003 (556)		
Contract No. 83846				



METHOD OF FLAGGING

NOTE:

1. SIGNS SHALL BE MOUNTED AT A MINIMUM CLEARANCE HEIGHT OF 5 FEET
2. ALL SIGNS SHALL BE REMOVED WHEN THE FLAGGING OPERATION CEASES.
3. THIS CASE ALSO APPLIES WHEN THE WORK ZONE IS ON THE RIGHT. UNDER THESE CONDITIONS "TRUCKS ENTERING FROM RIGHT" SIGNS SHALL BE SUBSTITUTED FOR "TRUCKS ENTERING FROM LEFT" SIGNS. ALSO THE ARROWBOARD AND "BE PREPARED TO STOP" SIGNS SHALL BE RELOCATED TO THE RIGHT SIDE OF THE ROAD.
4. WORK ZONE ACCESS POINTS SHOULD BE A MINIMUM OF ONE HALF MILE APART. MEDIAN WORK ZONE ACCESS POINTS SHOULD NOT BE LOCATED OPPOSITE OF EACH OTHER.
5. NIGHTTIME FLAGGING OPERATIONS: THE FLAG STATION SHALL BE LIGHTED WITH ADDITIONAL LIGHTS OTHER THAN STREET LIGHTS. THE FLAGGER CONTROL SIGN AND THE FLAGGER'S VEST SHALL BE REFLECTORIZED. IN ADDITION, THE FLAGGER SHALL HAVE A FLASHLIGHT OR LIGHTED WAND.

REVISIONS	
NAME	DATE
RAY RITCHIE	5/10/00

ILLINOIS DEPARTMENT OF TRANSPORTATION

METHOD OF FLAGGING

SCALE: NOT TO SCALE

DATE 10/18/2002

DRAWN BY C.A.D.

CHECKED BY

BM-14

REVISION DATE: 05/10/00

DATE-TIME
DGN-SPEC
VFBM14