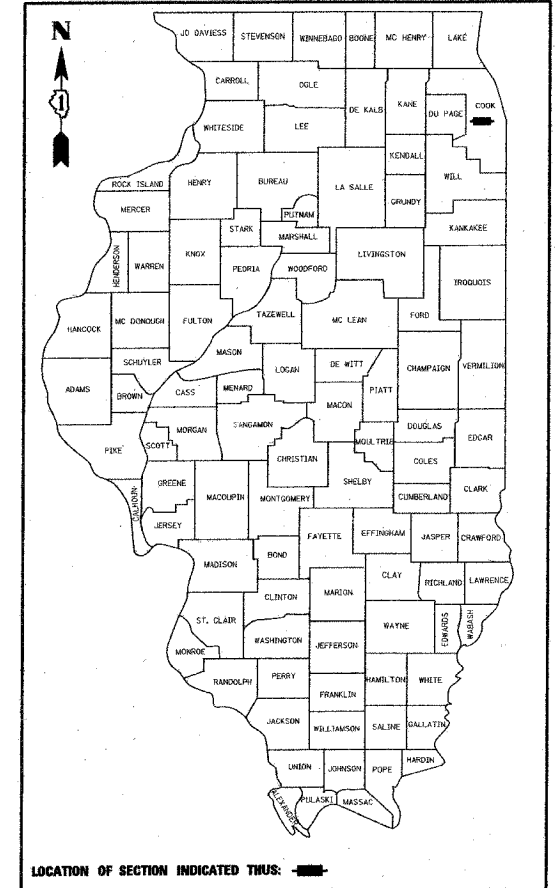


F.A.U. RTE.	SECTION	COUNTY	TOTAL SHEETS	SHEET NO.
1693	05-00071-00-RS	COOK	14	1
FED. ROAD DIST. NO. - ILLINOIS		FED. AID PROJECT		
CONTRACT NO: 83848				

STATE OF ILLINOIS  
DEPARTMENT OF TRANSPORTATION  
DIVISION OF HIGHWAYS

**PLANS FOR PROPOSED  
FEDERAL AID HIGHWAY**  
**F.A.U. ROUTE 1693 (EAST QUINCY STREET)**  
**RIVERSIDE ROAD TO F.A.P. 348 (IL 43 / HARLEM AVENUE)**  
**ROADWAY RESURFACING**  
**SECTION 05-00071-00-RS**  
**PROJECT: M-8003 (515)**  
**JOB# C-91-199-05**  
**VILLAGE OF RIVERSIDE**  
**COOK COUNTY**



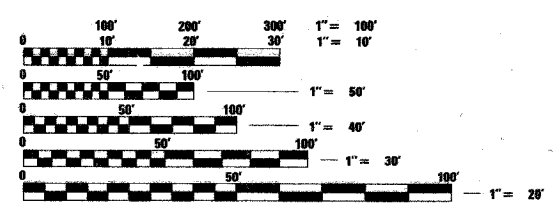
**INDEX OF SHEETS**

NO.	TITLE
1	TITLE SHEET
2	SUMMARY OF QUANTITIES, IDOT STANDARDS, GENERAL NOTES AND BENCHMARKS
3	TYPICAL SECTIONS
4-7	PLAN SHEETS
8-9	CONSTRUCTION DETAILS
10	CURB OR CURB AND GUTTER REMOVAL AND REPLACEMENT DETAILS
11	BUTT JOINT AND BITUMINOUS TAPER DETAILS
12	TRAFFIC CONTROL AND PROTECTION FOR SIDE ROADS, INTERSECTIONS, AND DRIVEWAYS
13	DISTRICT ONE TYPICAL PAVEMENT MARKINGS
14	PAVEMENT MARKING LETTERS AND SYMBOLS FOR TRAFFIC STAGING

**PROJECT LOCATED IN  
VILLAGE OF RIVERSIDE**

DESIGN SPEED 30 mph  
SPEED LIMIT = 25 mph  
ADT = 2,000 (2030)

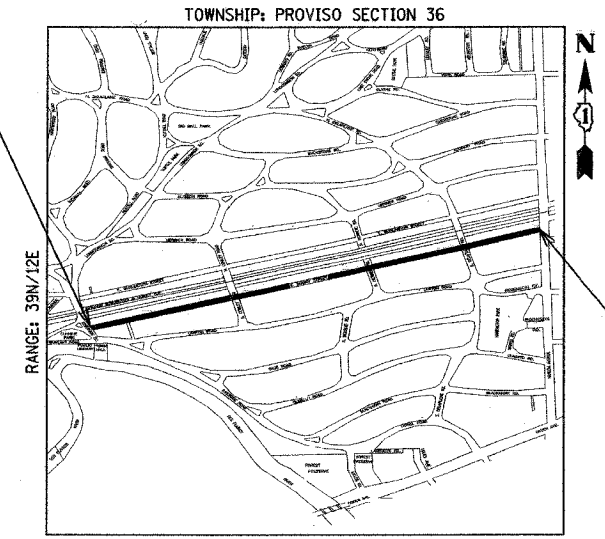
**DESIGN DESIGNATION: COLLECTOR**



FULL SIZE PLANS HAVE BEEN PREPARED USING STANDARD ENGINEERING SCALES, REDUCED SIZED PLANS WILL NOT CONFORM TO STANDARD SCALES, IN MAKING MEASUREMENTS ON REDUCED PLANS, THE ABOVE SCALES MAY BE USED.

J.U.L.I.E.  
JOINT UTILITY LOCATION INFORMATION FOR EXCAVATION  
1-800-892-0123

PROJECT BEGINS - EAST QUINCY STREET  
AT RIVERSIDE ROAD  
STA. 100+01



PROJECT ENDS - EAST QUINCY STREET  
AT HARLEM AVENUE (IL 43)  
STA. 145+95

LOCATION MAP  
GROSS LENGTH OF PROJECT: 4594 FT. (0.870 MI.)  
39N/12E PROVISO TOWNSHIP SECTION 36  
SCALE: NTS

STATE OF ILLINOIS  
DEPARTMENT OF TRANSPORTATION  
DIVISION OF HIGHWAYS

APPROVED 2/24/06 [Signature]  
VILLAGE MANAGER, VILLAGE OF RIVERSIDE

PASSED APRIL 12 2006 [Signature] CHRIS HOLT  
ENGINEER OF LOCAL ROADS AND STREETS

SIGNED April 12 2006  
Diane M. O'Keefe [Signature]  
DEPUTY DIRECTOR OF HIGHWAYS, REGION ENGINEER



*James D. Miedema, P.E.*  
Exp. 11-30-07



JAMES J. BENES & ASSOCIATES  
CONSULTING ENGINEERS  
950 WARRENVILLE ROAD, SUITE 101  
LISLE, IL 60532

IDOT FEDERAL AID DESIGN ENGINEER: KEVIN STALLWORTH (847) 705-4169

CONTRACT NO. 83848

COUNTY: COOK SECTION: F.A.U. ROUTE: 1693