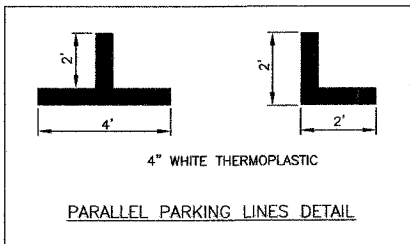
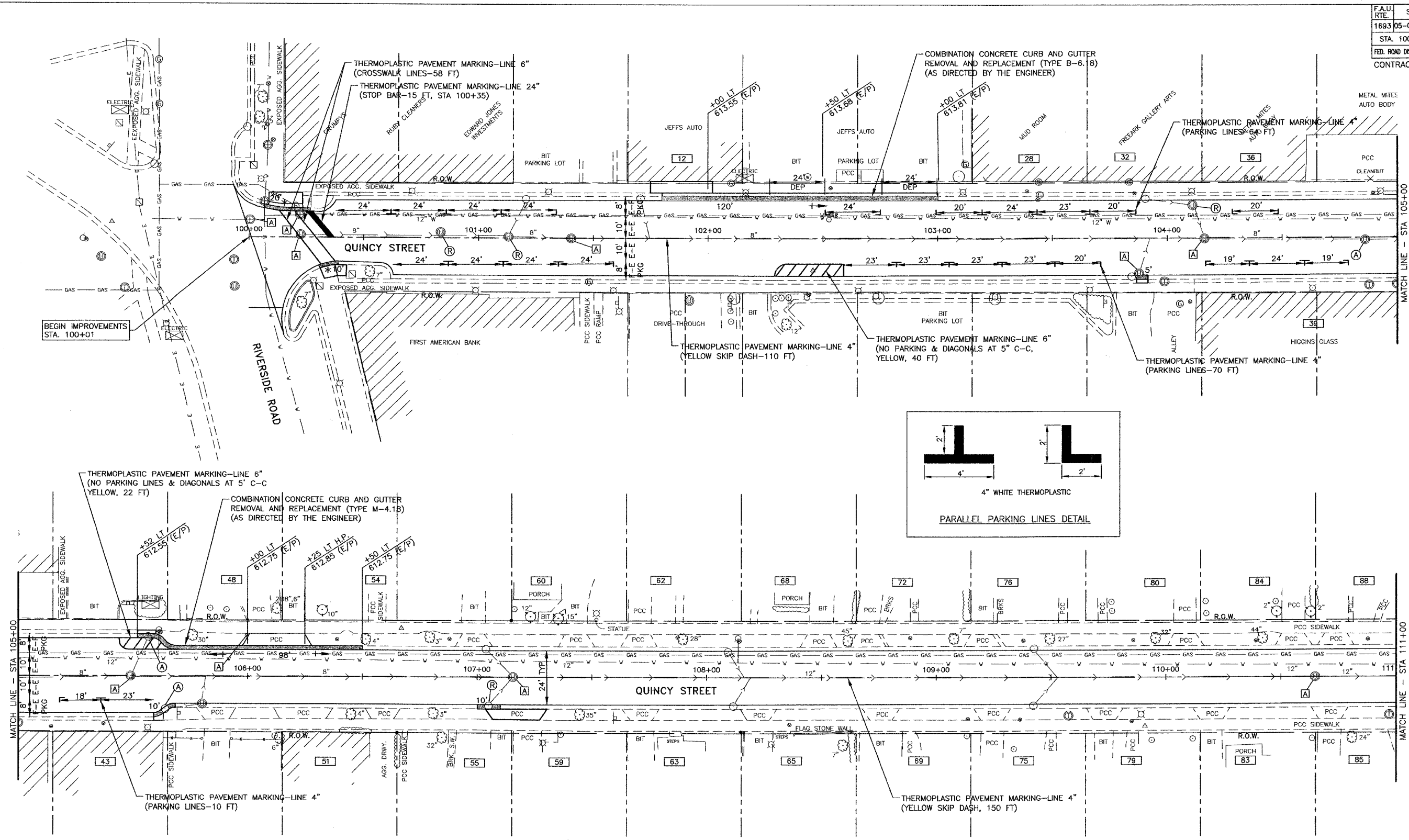


F.A.U. RTE.	SECTION	COUNTY	TOTAL SHEETS	SHEET NO.
1693 05-00071-00-RS		COOK	14	4
STA. 100+01 TO STA. 111+00				
FED. ROAD DIST. NO.	ILLINOIS	FED. AID PROJECT		
CONTRACT NO. 83848				



LEGEND

*	HANDICAP SIDEWALK DEPRESSION
[A]	STRUCTURE TO BE ADJUSTED
(A)	STRUCTURE TO BE ADJUSTED WITH NEW FRAME & LID
[R]	STRUCTURE TO BE RECONSTRUCTED
(R)	STRUCTURE TO BE RECONSTRUCTED WITH NEW FRAME & LID

REVISIONS

NO.	NAME	DATE
1	IDOT	12/22/09

ILLINOIS DEPARTMENT OF TRANSPORTATION
 F.A.U. ROUTE 1693
 QUINCY STREET

PLAN SHEET
 STA. 100+01 TO STA. 111+00

JJB JAMES J. BENES & ASSOCIATES, INC.
 950 Warrenville Road, Suite 101, Lisle, Illinois 60532
 Tel. (630) 719-7570 - Fax (630) 719-7589

SCALE: 1"=20'
 DATE: _____
 DRAWN BY: SMP
 CHECKED BY: JDM