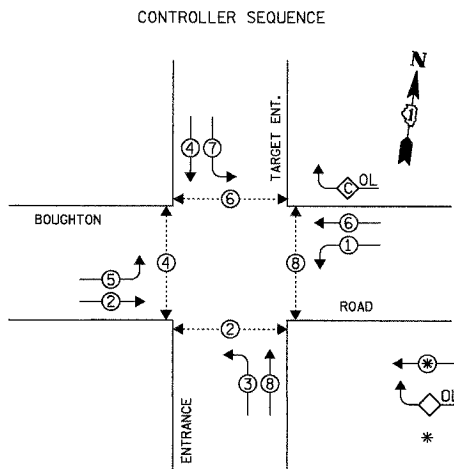


F.A.U. RTE.	SECTION	COUNTY	TOTAL SHEETS	SHEET NO.
3580 04-00043-00-TL		WILL	54	12
STA.		TO STA.		
FED. ROAD DIST. NO. ILLINOIS FED. AID PROJECT				
CONTRACT NO. 83855				

SCHEDULE OF QUANTITIES		
ITEM	UNIT	TOTAL
FULL-ACTUATED CONTROLLER AND TYPE V CABINET, SPECIAL	EACH	1
MAINTENANCE OF EXISTING TRAFFIC SIGNAL INSTALLATION	EACH	1
TRANSCEIVER - FIBER OPTIC	EACH	1
INDUCTIVE LOOP DETECTOR	EACH	8
REMOVE EXISTING TRAFFIC SIGNAL EQUIPMENT	EACH	1
RELOCATE EXISTING EMERGENCY VEHICLE PRIORITY GPS SYSTEM	EACH	1
RELOCATE EXISTING UPS BATTERY BACK-UP SYSTEM	EACH	1

THE FOLLOWING EXISTING TRAFFIC SIGNAL EQUIPMENT SHALL BE REMOVED BY THE CONTRACTOR, SHALL REMAIN THE PROPERTY OF THE OF THE VILLAGE OF BOLINGBROOK, AND SHALL BE DELIVERED BY THE CONTRACTOR TO THE VILLAGE YARD AS PER THE TRAFFIC SIGNAL SPECIFICATIONS.

1 EACH CONTROLLER AND CABINET (COMPLETE)

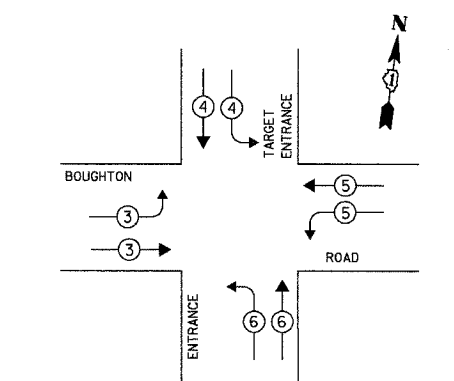


**LEGEND**  
 ⊕ DUAL ENTRY PHASE  
 ⊙ OVERLAP  
 \* NUMBER REFERS TO ASSOCIATED PHASE



OVERLAP LETTER	PERMISSIVE PHASE	PROTECTED PHASE
C	= 6	+ 7

EMERGENCY VEHICLE PREEMPTION SEQUENCE



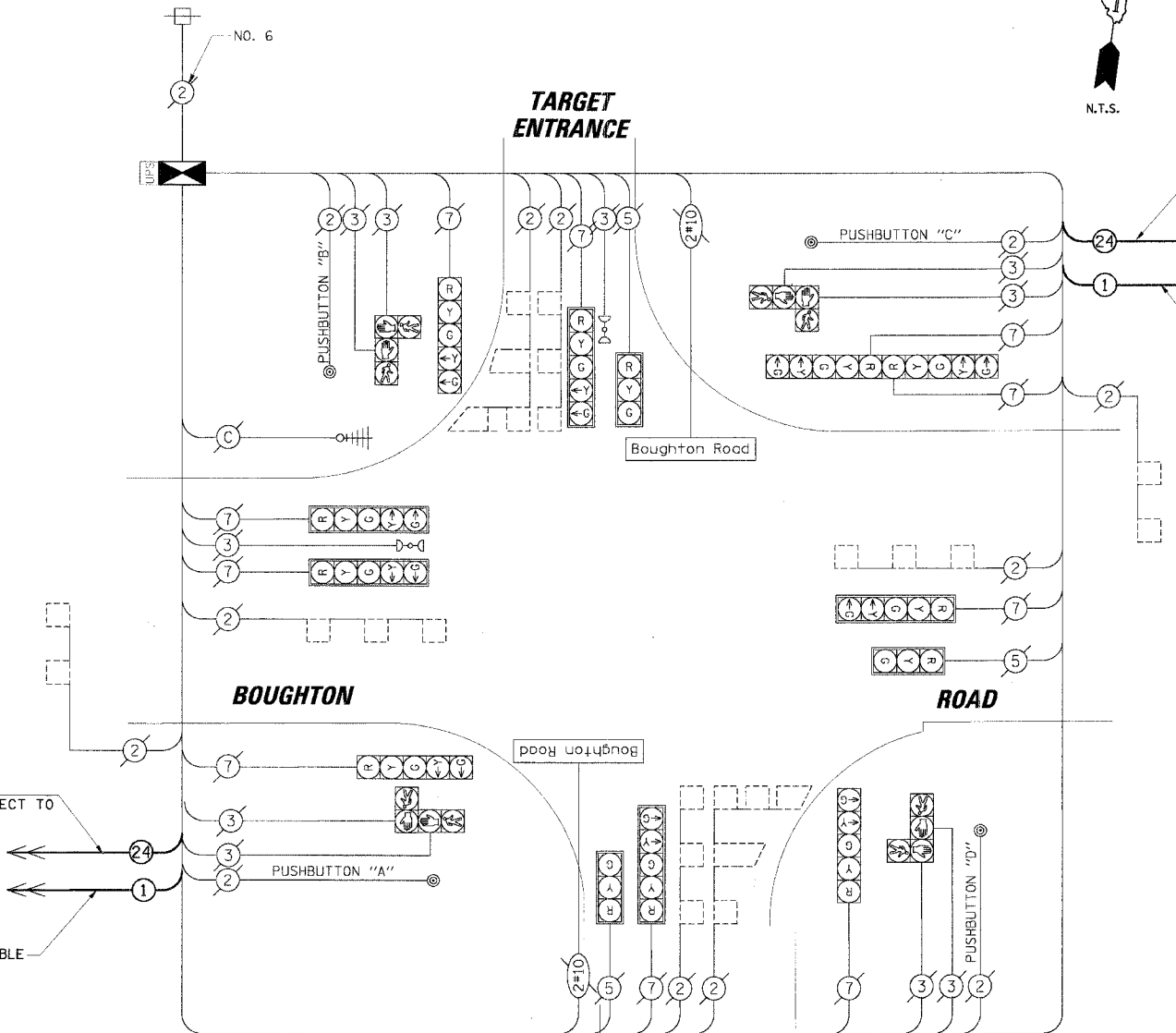
PROPOSED EMERGENCY VEHICLE PREEMPTORS				
EMERGENCY VEHICLE PREEMPTOR	3	4	5	6
MOVEMENT	→	↓	←	↑

I.D.O.T. TRAFFIC SIGNAL INSTALLATION ELECTRICAL SERVICE REQUIREMENTS					TOTAL WATTAGE
TYPE	NO. OF LAMPS	INCAND.	LED	% OPERATION	
SIGNAL (RED)	13		17	0.50	110.50
(YELLOW)	13		25	0.25	81.25
(GREEN)	13		15	0.25	48.75
ARROW	20		12	0.10	24.00
PED. SIGNAL	8		25	1.00	200.00
CONTROLLER	1		100	1.00	100.00
ILLUM. SIGN	-		25	0.05	-
ILLUM. ST. NAME SIGN	2		60	0.50	60
LUMINAIRES	-	250		0.50	-
FLASHER	-			0.50	-
TOTAL =					624.50

ENERGY COSTS TO:  
**VILLAGE OF BOLINGBROOK**  
 375 BRIARCLIFF ROAD  
 BOLINGBROOK, ILLINOIS 60440-0951  
 ENERGY SUPPLY: CONTACT: DALE BOLLINGER  
 PHONE: (815) 724-5717  
 COMPANY: COMED

FOUNDATION (DEPTH)	FT. (m)	CABLE SLACK	FT. (m)	VERTICAL	FT. (m)
TYPE A - POST	4 (1.2)	HANDHOLE	6.5 (2.0)	ALL FOUNDATIONS	3.5 (1.0)
D - CONTROLLER	4 (1.2)	DOUBLE HANDHOLE	13 (4.0)	MAST ARM (L) POLE	20'±L-2'
E - M. ARM POLE		SIGNAL POST	2 (1.0)		(6m±L-0.6m)
		24" (600mm)	10 (3.0)	CONTROLLER CAB.	1 (0.5)
		30" (750mm)	15 (4.6)	FIBER OPTIC	13 (4.0)
		36" (900mm)	15 (4.6)	ELECTRIC SERVICE	1 (0.5)
				GROUND CABLE	1 (0.5)
				SERVICE TO GROUND	13.5 (4.1)
				POST MOUNTED	6 (1.8)

NOTE:  
 THE TRAFFIC SIGNAL CONTROLLER EQUIPMENT FOR THIS PROJECT SHALL BE "ECONOLITE" TO MATCH THE EXISTING ADJACENT SYSTEM.



NOTE:  
 PUSHBUTTON "A" SHALL PLACE A CALL IN PHASES 2 AND 4.  
 PUSHBUTTON "B" SHALL PLACE A CALL IN PHASES 4 AND 6.  
 PUSHBUTTON "C" SHALL PLACE A CALL IN PHASES 6 AND 8.  
 PUSHBUTTON "D" SHALL PLACE A CALL IN PHASES 2 AND 8.

CABLE PLAN LEGEND	
EXISTING	PROPOSED
(Symbol)	(Symbol) 8" (200mm) TRAFFIC SIGNAL SECTION
(Symbol)	(Symbol) 12" (300mm) TRAFFIC SIGNAL SECTION
(Symbol)	(Symbol) 12" (300mm) PEDESTRIAN SIGNAL SECTION
(Symbol)	(Symbol) 12" (300mm) PEDESTRIAN SIGNAL SECTION
(Symbol)	(Symbol) CONTROLLER CABINET
(Symbol)	(Symbol) SERVICE INSTALLATION
(Symbol)	(Symbol) TELEPHONE INSTALLATION
(Symbol)	(Symbol) VEHICLE DETECTOR, INDUCTION LOOP
(Symbol)	(Symbol) MAGNETIC DETECTOR
(Symbol)	(Symbol) EMERGENCY VEHICLE LIGHT DETECTOR
(Symbol)	(Symbol) CONFIRMATION BEACON
(Symbol)	(Symbol) PUSHBUTTON DETECTOR
(Symbol)	(Symbol) DENOTES NUMBER OF CONDUCTORS.
(Symbol)	(Symbol) ALL CABLE NO. 14 EXCEPT AS INDICATED.
(Symbol)	(Symbol) ALL LOOP DETECTOR CABLE TO BE SHIELDED.
(Symbol)	(Symbol) GROUND CABLE IN CONDUIT
(Symbol)	(Symbol) NO. 6 SOLID COPPER (GREEN)
(Symbol)	(Symbol) FIBER OPTIC CABLE IN CONDUIT
(Symbol)	(Symbol) NO. 62.5/125 2-MM12F SM12F
(Symbol)	(Symbol) SIGNAL FACE WITH BACKPLATE.
(Symbol)	(Symbol) "P" INDICATES PROGRAMMED HEAD.
(Symbol)	(Symbol) RAILROAD CONTROL CABINET
(Symbol)	(Symbol) ILLUMINATED SIGN "NO LEFT TURN"
(Symbol)	(Symbol) ILLUMINATED SIGN "NO RIGHT TURN"
(Symbol)	(Symbol) GROUND ROD AT HANDHOLE (H), DOUBLE HANDHOLE (H), OR CONTROLLER (C)
(Symbol)	(Symbol) GROUND ROD AT POST (P) OR MAST ARM POLE (MA)
(Symbol)	(Symbol) GROUND ROD AT ELECTRIC SERVICE INSTALLATION
(Symbol)	(Symbol) ILLUMINATED STREET NAME SIGN
(Symbol)	(Symbol) EMERGENCY VEHICLE SYSTEM ANTENNA
(Symbol)	(Symbol) LUMINAIRE
(Symbol)	(Symbol) COAXIAL CABLE
(Symbol)	(Symbol) UNINTERRUPTABLE POWER SUPPLY

- CONSTRUCTION NOTES:
- REMOVE EXISTING CABINET AND CONTROLLER. INSTALL NEW CONTROLLER AND TYPE V CABINET ON EXISTING FOUNDATION, AND FIBER OPTIC TRANSCEIVER.
  - RELOCATE EXISTING EVP AND UPS UNITS. RELOCATE MASTER CONTROLLER AND MODEM TO BOUGHTON ROAD/WEBER ROAD CABINET.

REVISIONS	
NAME	DATE

ILLINOIS DEPARTMENT OF TRANSPORTATION  
**SCHEDULE OF QUANTITIES, CABLE PLAN AND PHASE DESIGNATION DIAGRAM**  
 BOUGHTON ROAD AND TARGET ENTRANCE  
 BOLINGBROOK, ILLINOIS  
 SCALE: N.T.S.  
 DATE: 4/7/2006  
 DRAWN BY: FCP/FPB  
 DESIGNED BY: MKW  
 CHECKED BY: MJT

DATE: \_\_\_\_\_ BY: \_\_\_\_\_  
 PLAN NO. \_\_\_\_\_  
 CHECKED BY: \_\_\_\_\_  
 DATE: \_\_\_\_\_  
 SUBMITTED BY: \_\_\_\_\_  
 DATE: \_\_\_\_\_  
**CHRISTOPHER B. BURKE ENGINEERING LTD.**  
 3775 West Higgins Road, Suite 600  
 Rosemont, Illinois 60018  
 (847) 823-0600