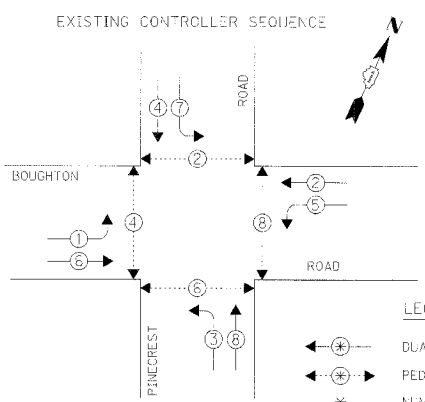
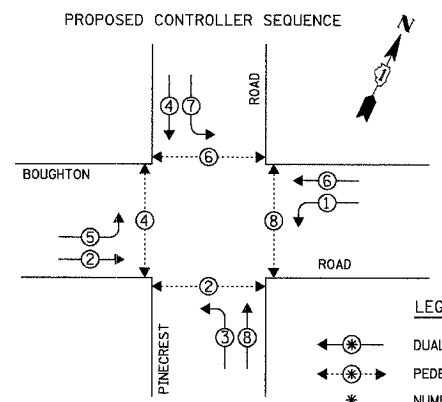
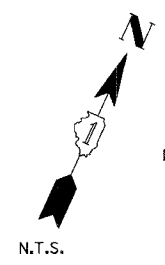


F.A.U. NO.	SECTION	COUNTY	TOTAL SHEETS	SHEET NO.
3580	04-00043-00-TL	WILL	54	24
STA.		TO STA.		
FED. ROAD DIST. NO.		ILLINOIS FED. AID PROJECT		
CONTRACT NO.: 83855				

SCHEDULE OF QUANTITIES		
ITEM	UNIT	TOTAL
FULL-ACTUATED CONTROLLER AND TYPE V CABINET, SPECIAL	EACH	1
MAINTENANCE OF EXISTING TRAFFIC SIGNAL INSTALLATION	EACH	1
TRANSCEIVER - FIBER OPTIC	EACH	1
INDUCTIVE LOOP DETECTOR	EACH	4
REMOVE EXISTING TRAFFIC SIGNAL EQUIPMENT	EACH	1
RELOCATE EXISTING EMERGENCY VEHICLE PRIORITY GPS SYSTEM	EACH	1
RELOCATE EXISTING UPS BATTERY BACK-UP SYSTEM	EACH	1

THE FOLLOWING EXISTING TRAFFIC SIGNAL EQUIPMENT SHALL BE REMOVED BY THE CONTRACTOR, SHALL REMAIN THE PROPERTY OF THE OF THE VILLAGE OF BOLINGBROOK, AND SHALL BE DELIVERED BY THE CONTRACTOR TO THE VILLAGE YARD AS PER THE TRAFFIC SIGNAL SPECIFICATIONS.

1 EACH CONTROLLER AND CABINET (COMPLETE)

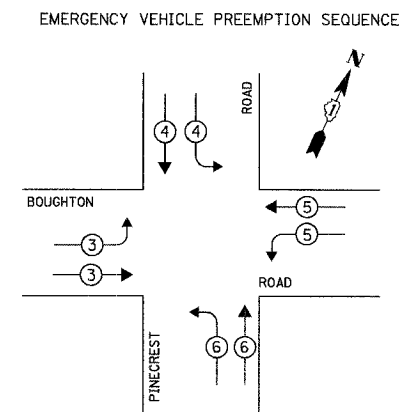


PHASE DESIGNATION DIAGRAM

PHASE DESIGNATION DIAGRAM

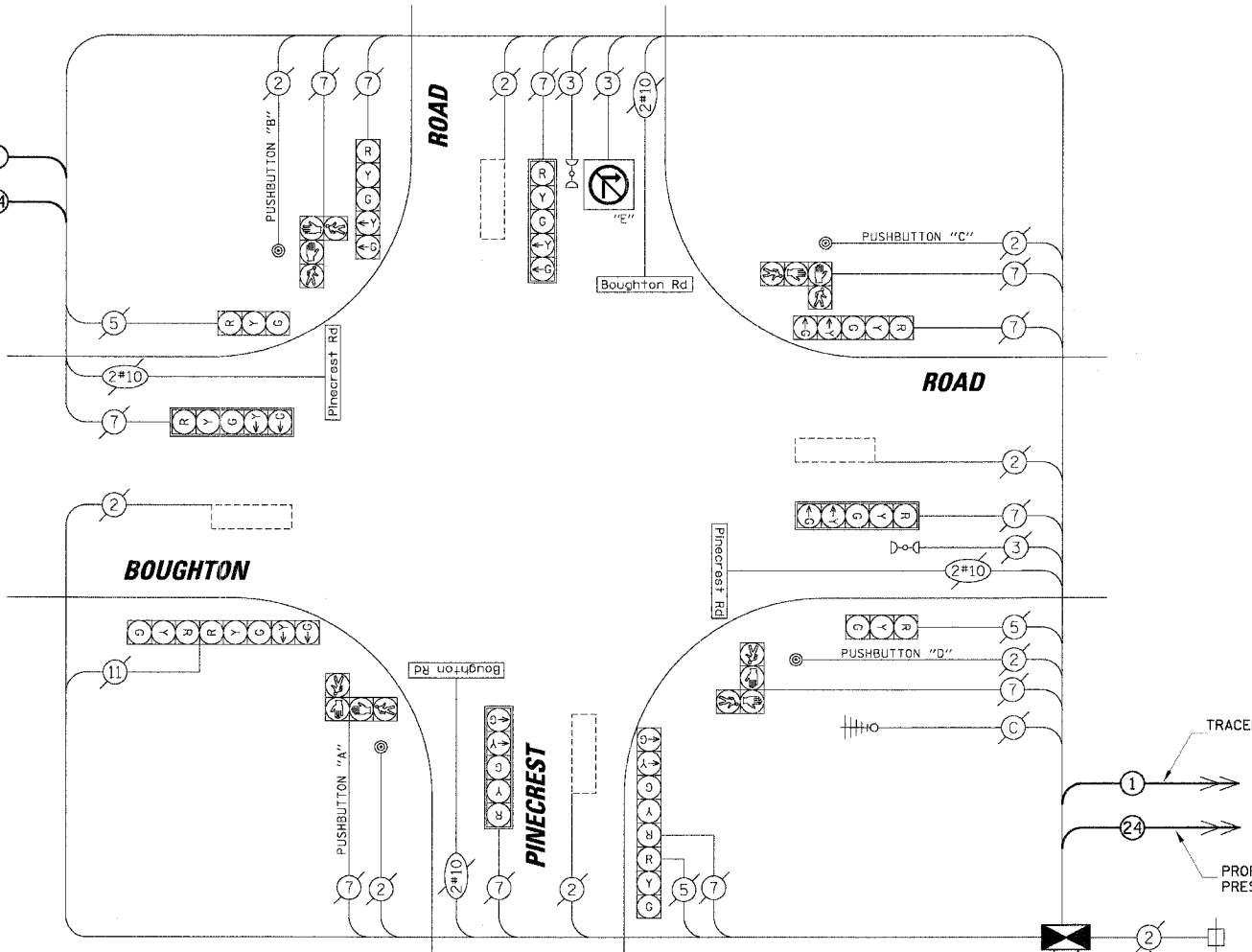
LEGEND
 ← ⊙ → DUAL ENTRY PHASE
 ← ⊙ → PEDESTRIAN PHASE
 * NUMBER REFERS TO ASSOCIATED PHASE

LEGEND
 ← ⊙ → DUAL ENTRY PHASE
 ← ⊙ → PEDESTRIAN PHASE
 * NUMBER REFERS TO ASSOCIATED PHASE



PROPOSED EMERGENCY VEHICLE PREEMPTORS				
EMERGENCY VEHICLE PREEMPTOR	3	4	5	6
MOVEMENT	→	↓	←	↑

TRACER CABLE
 PROPOSED INTERCONNECT TO FALCONRIDGE WAY/WINSTON DRIVE



CABLE PLAN

NOTE:
 PUSHBUTTON "A" SHALL PLACE A CALL IN PHASES 2 AND 4.
 PUSHBUTTON "B" SHALL PLACE A CALL IN PHASES 4 AND 6.
 PUSHBUTTON "C" SHALL PLACE A CALL IN PHASES 6 AND 8.
 PUSHBUTTON "D" SHALL PLACE A CALL IN PHASES 2 AND 8.

I.D.O.T. TRAFFIC SIGNAL INSTALLATION ELECTRICAL SERVICE REQUIREMENTS					TOTAL WATTAGE
TYPE	NO. OF LAMPS	WATTAGE X INCAND.	LED	% OPERATION	
SIGNAL (RED)	12		17	0.50	102.00
(YELLOW)	12		25	0.25	75.00
(GREEN)	12		15	0.25	45.00
ARROW	16		12	0.10	9.60
PED. SIGNAL	8		25	1.00	200.00
CONTROLLER	1		100	1.00	100.00
ILLUM. SIGN	1		25	0.05	1.25
LUMINAIRE	-		-	-	-
ILLUM. ST. NAME SIGN	4		60	0.50	120.00
FLASHER	-		-	0.50	-
ENERGY COSTS TO:					TOTAL = 652.85

VILLAGE OF BOLINGBROOK
 375 BRIARCLIFF ROAD
 BOLINGBROOK, ILLINOIS 60440-0951
 ENERGY SUPPLY: CONTACT: DALE BOLLINGER
 PHONE: (815) 724-5717
 COMPANY: COMED

FOUNDATION (DEPTH)	FT. (m)	CABLE SLACK	FT. (m)	VERTICAL	FT. (m)
TYPE A - POST	4 (1.2)	HANDHOLE	6.5 (2.0)	ALL FOUNDATIONS	3.5 (1.0)
D - CONTROLLER	4 (1.2)	DOUBLE HANDHOLE	13 (4.0)	MAST ARM (L) POLE	20'±L-2'
E - M. ARM POLE		SIGNAL POST	2 (1.0)		(6m±L-0.6m)±
24" (600mm)	10 (3.0)	CONTROLLER CAB.	1 (0.5)	BRACKET MOUNTED	13 (4.0)
30" (750mm)	15 (4.6)	FIBER OPTIC	13 (4.0)	PED. PUSHBUTTON	4 (1.2)
36" (900mm)	15 (4.6)	ELECTRIC SERVICE	1 (0.5)	ELECTRIC SERVICE	13.5 (4.1)
		GROUND CABLE	1 (0.5)	SERVICING TO GROUND	13.5 (4.1)
				POST MOUNTED	6 (1.8)

NOTE:
 THE TRAFFIC SIGNAL CONTROLLER EQUIPMENT FOR THIS PROJECT SHALL BE "ECONOLITE" TO MATCH THE EXISTING ADJACENT SYSTEM.

EXISTING	PROPOSED	CABLE PLAN LEGEND
⊙	⊙	8" (200mm) TRAFFIC SIGNAL SECTION
⊙	⊙	12" (300mm) TRAFFIC SIGNAL SECTION
⊙	⊙	12" (300mm) PEDESTRIAN SIGNAL SECTION
⊙	⊙	12" (300mm) PEDESTRIAN SIGNAL SECTION
⊙	⊙	CONTROLLER CABINET
⊙	⊙	SERVICE INSTALLATION
⊙	⊙	TELEPHONE INSTALLATION
⊙	⊙	VEHICLE DETECTOR, INDUCTION LOOP
⊙	⊙	MAGNETIC DETECTOR
⊙	⊙	EMERGENCY VEHICLE LIGHT DETECTOR
⊙	⊙	CONFIRMATION BEACON
⊙	⊙	PUSHBUTTON DETECTOR
⊙	⊙	DENOTES NUMBER OF CONDUCTORS. ALL CABLE NO. 14 EXCEPT AS INDICATED. ALL LOOP DETECTOR CABLE TO BE SHIELDED.
⊙	⊙	⊙ GROUND CABLE IN CONDUIT NO. 6 SOLID COPPER (GREEN)
⊙	⊙	⊙ FIBER OPTIC CABLE IN CONDUIT NO. 62.5/125 2-MM12F SMI2F
⊙	⊙	SIGNAL FACE WITH BACKPLATE. "P" INDICATES PROGRAMMED HEAD.
⊙	⊙	RAILROAD CONTROL CABINET
⊙	⊙	ILLUMINATED SIGN "NO LEFT TURN"
⊙	⊙	ILLUMINATED SIGN "NO RIGHT TURN"
⊙	⊙	GROUND ROD AT HANDHOLE (H), DOUBLE HANDHOLE (H), OR CONTROLLER (C)
⊙	⊙	GROUND ROD AT POST (P) OR MAST ARM POLE (MA)
⊙	⊙	GROUND ROD AT ELECTRIC SERVICE INSTALLATION
⊙	⊙	ILLUMINATED STREET NAME SIGN
⊙	⊙	EMERGENCY VEHICLE SYSTEM ANTENNA
⊙	⊙	LUMINAIRE
⊙	⊙	COAXIAL CABLE
⊙	⊙	UNINTERRUPTIBLE POWER SUPPLY

CONSTRUCTION NOTES:
 ① REMOVE EXISTING CABINET AND CONTROLLER. INSTALL NEW CONTROLLER AND TYPE V CABINET ON EXISTING FOUNDATION, AND FIBER OPTIC TRANSCEIVER.
 ② RELOCATE EXISTING EVP AND UPS UNITS.
 ③ FIBER OPTIC CABLE FROM FALCONRIDGE WAY IS TO BE TERMINATED IN SPLICE BOX BUT NOT CONNECTED TO THIS INTERSECTION.

REVISIONS	
NAME	DATE

ILLINOIS DEPARTMENT OF TRANSPORTATION
SCHEDULE OF QUANTITIES, CABLE PLAN AND PHASE DESIGNATION DIAGRAM
 BOUGHTON ROAD AND PINECREST ROAD
 BOLINGBROOK, ILLINOIS
 SCALE: N.T.S. DRAWN BY: FCP/FPB
 DATE: 4/7/2006 DESIGNED BY: MKW
 CHECKED BY: MJT

PROFILE SUBMITTED BY: CHRISTOPHER B. BURKE ENGINEERING LTD.
 DATE: 03/08/06
 DRAWN BY: FCP/FPB
 CHECKED BY: MKW
 DATE: 04/07/06
 PROJECT NO.: 04-00043-00-TL
 SHEET NO.: 24 OF 54
 CONTRACT NO.: 83855