

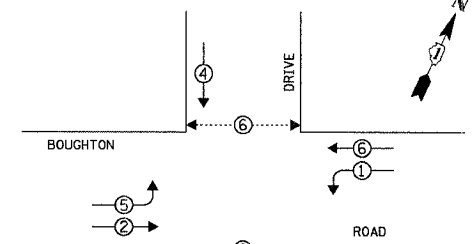
F.A.U. RTE.	SECTION	COUNTY	TOTAL SHEETS	SHEET NO.
3580	04-00043-00-TL	WILL	54	25
STA.	TO STA.			
FED. ROAD DIST. NO.	ILLINOIS	FED. AID PROJECT		
CONTRACT NO.: 83855				

CABLE PLAN LEGEND

- | | |
|--|--|
| | 8" (200mm) TRAFFIC SIGNAL SECTION |
| | 12" (300mm) TRAFFIC SIGNAL SECTION |
| | 12" (300mm) PEDESTRIAN SIGNAL SECTION |
| | 12" (300mm) PEDESTRIAN SIGNAL SECTION |
| | CONTROLLER CABINET |
| | SERVICE INSTALLATION |
| | TELEPHONE INSTALLATION |
| | VEHICLE DETECTOR, INDUCTION LOOP |
| | MAGNETIC DETECTOR |
| | EMERGENCY VEHICLE LIGHT DETECTOR |
| | CONFIRMATION BEACON |
| | PUSHBUTTON DETECTOR |
| | 24 DENOTES NUMBER OF CONDUCTORS. ALL CABLE NO. 14 EXCEPT AS INDICATED. ALL LOOP DETECTOR CABLE TO BE SHIELDED. |
| | GROUND CABLE IN CONDUIT NO. 6 SOLID COPPER (GREEN) |
| | FIBER OPTIC CABLE IN CONDUIT NO. 62.5/125 2-MM12F SM12F |
| | SIGNAL FACE WITH BACKPLATE. "P" INDICATES PROGRAMMED HEAD. |
| | RAILROAD CONTROL CABINET |
| | ILLUMINATED SIGN "NO LEFT TURN" |
| | ILLUMINATED SIGN "NO RIGHT TURN" |
| | GROUND ROD AT HANDHOLE (H), DOUBLE HANDHOLE (H), OR CONTROLLER (C) |
| | GROUND ROD AT POST (P) OR MAST ARM POLE (MA) |
| | GROUND ROD AT ELECTRIC SERVICE INSTALLATION |
| | ILLUMINATED STREET NAME SIGN |
| | EMERGENCY VEHICLE SYSTEM ANTENNA |
| | LUMINAIRE |
| | COAXIAL CABLE |
| | UNINTERRUPTIBLE POWER SUPPLY |

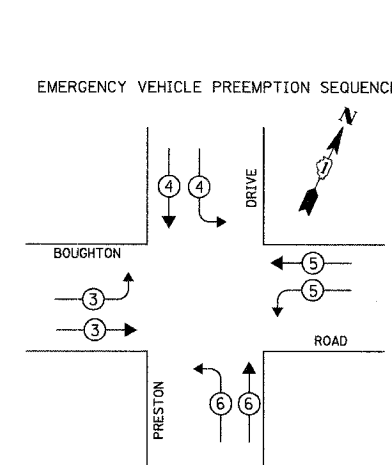
ITEM	UNIT	TOTAL
MAINTENANCE OF EXISTING TRAFFIC SIGNAL INSTALLATION	EACH	1
TRANSCEIVER - FIBER OPTIC	EACH	1
MODIFY EXISTING CONTROLLER	EACH	1

CONTROLLER SEQUENCE

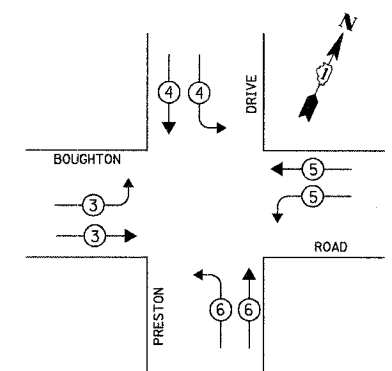


- LEGEND
- DUAL ENTRY PHASE
 - PEDESTRIAN PHASE
 - NUMBER REFERS TO ASSOCIATED PHASE

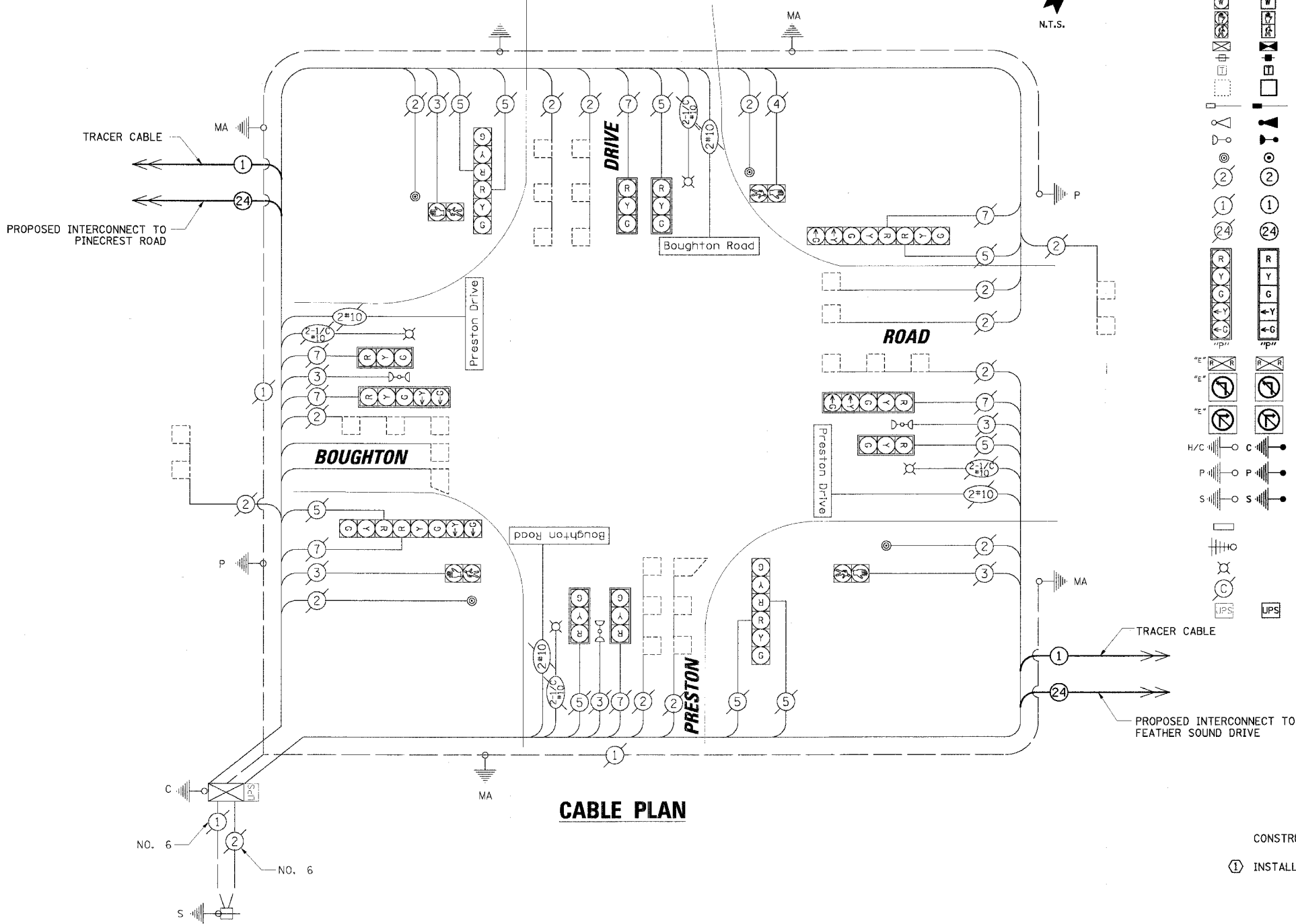
PHASE DESIGNATION DIAGRAM



EMERGENCY VEHICLE PREEMPTION SEQUENCE



EMERGENCY VEHICLE PREEMPTOR	3	4	5	6
MOVEMENT				



CABLE PLAN

I.D.O.T. TRAFFIC SIGNAL INSTALLATION ELECTRICAL SERVICE REQUIREMENTS					TOTAL WATTAGE
TYPE	NO. OF LAMPS	WATTAGE X INCAND.	LED	% OPERATION	
SIGNAL (RED)	16		17	0.50	136.00
(YELLOW)	16		25	0.25	100.00
(GREEN)	16		15	0.25	60.00
ARROW	8		12	0.10	9.60
PED. SIGNAL	4		25	1.00	100.00
CONTROLLER	1		100	1.00	100.00
ILLUM. SIGN	-		25	0.05	-
ILLUM. ST. NAME SIGN	4		60	0.50	120.00
LUMINAIRE	4	250		0.50	500.00
FLASHER				0.50	
TOTAL =					1125.60

FOUNDATION (DEPTH)	FT. (m)	CABLE SLACK	FT. (m)	VERTICAL	FT. (m)
TYPE A - POST	4 (1.2)	HANDHOLE	6.5 (2.0)	ALL FOUNDATIONS	3.5 (1.0)
D - CONTROLLER	4 (1.2)	DOUBLE HANDHOLE	13 (4.0)	MAST ARM (L) POLE	20'+L-2=
E - M. ARM POLE		SIGNAL POST	2 (1.0)		(6m+L-0.6m)=
24" (600mm)	10 (3.0)	CONTROLLER CAB.	1 (0.5)	BRACKET MOUNTED	13 (4.0)
30" (750mm)	15 (4.6)	FIBER OPTIC	13 (4.0)	PED. PUSHBUTTON	4 (1.2)
36" (900mm)	15 (4.6)	ELECTRIC SERVICE	1 (0.5)	ELECTRIC SERVICE	13.5 (4.1)
		GROUND CABLE	1 (0.5)	SERVICE TO GROUND	13.5 (4.1)
				POST MOUNTED	6 (1.8)

NOTE: THE TRAFFIC SIGNAL CONTROLLER EQUIPMENT FOR THIS PROJECT SHALL BE "ECONOLITE" TO MATCH THE EXISTING ADJACENT SYSTEM.

- CONSTRUCTION NOTES:
- ① INSTALL NEW FIBER OPTIC TRANSCEIVER.

REVISIONS	DATE
NAME	

ILLINOIS DEPARTMENT OF TRANSPORTATION
SCHEDULE OF QUANTITIES, CABLE PLAN AND PHASE DESIGNATION DIAGRAM
 BOUGHTON ROAD AND PRESTON DRIVE
 BOLINGBROOK, ILLINOIS
 SCALE: N.T.S.
 DATE: 4/7/2006
 DRAWN BY: FCP/FPB
 DESIGNED BY: MKW
 CHECKED BY: MJT

DATE: _____ BY: _____
 PROJECT: VILLAGE OF BOLINGBROOK
 DRAWING NO.: TRAFFIC SIGNAL CAB. PRESTON.DGN
 PROJECT NO.: 05599
 DATE: _____ BY: _____
 PROJECT: VILLAGE OF BOLINGBROOK
 DRAWING NO.: TRAFFIC SIGNAL CAB. PRESTON.DGN
 PROJECT NO.: 05599

ENERGY COSTS TO:
 VILLAGE OF BOLINGBROOK
 375 BRIARCLIFF ROAD
 BOLINGBROOK, ILLINOIS 60440-0951
 ENERGY SUPPLY: CONTACT: DALE BOLLINGER
 PHONE: (815) 724-5717
 COMPANY: COMED