

DATE: \_\_\_\_\_ BY: \_\_\_\_\_  
 CHECKED: \_\_\_\_\_  
 DATE: \_\_\_\_\_ BY: \_\_\_\_\_  
 CHECKED: \_\_\_\_\_  
 DATE: \_\_\_\_\_ BY: \_\_\_\_\_  
 CHECKED: \_\_\_\_\_

PROFITE SUBMITTED BY: \_\_\_\_\_  
 DATE: \_\_\_\_\_  
 CHECKED: \_\_\_\_\_  
 DATE: \_\_\_\_\_  
 CHECKED: \_\_\_\_\_

DATE: \_\_\_\_\_ BY: \_\_\_\_\_  
 CHECKED: \_\_\_\_\_  
 DATE: \_\_\_\_\_  
 CHECKED: \_\_\_\_\_

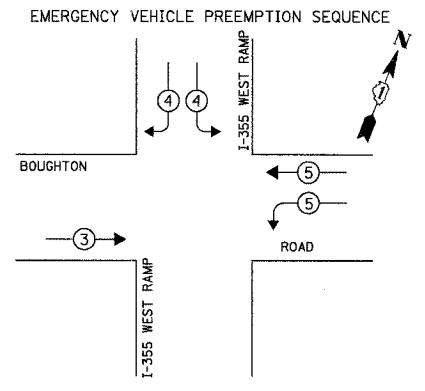
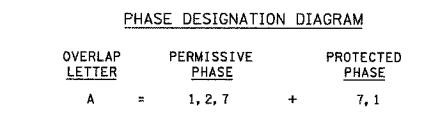
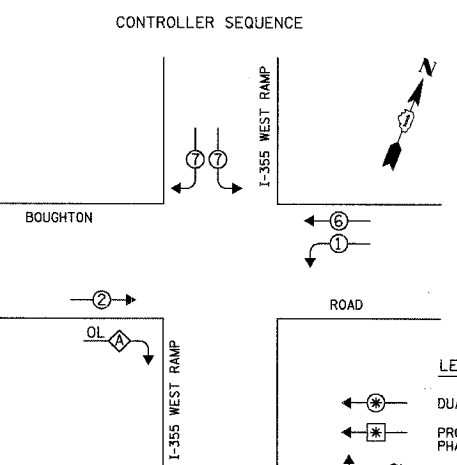
CHRISTOPHER B. BURKE ENGINEERING LTD.  
 375 BRIARCLIFF ROAD  
 BOLINGBROOK, ILLINOIS 60440-0951  
 (815) 823-0500

F.A.U. RTE.	SECTION	COUNTY	TOTAL SHEETS	SHEET NO.
3580	04-00043-00-TL	WILL	54	28
STA.		TO STA.		
FED. ROAD DIST. NO.		ILLINOIS FED. AID PROJECT		
CONTRACT NO.: 83855				

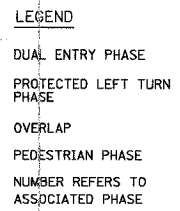
SCHEDULE OF QUANTITIES		UNIT	TOTAL
FULL-ACTUATED CONTROLLER AND TYPE V CABINET, SPECIAL MAINTENANCE OF EXISTING TRAFFIC SIGNAL INSTALLATION		EACH	1
TRANSCIVER - FIBER OPTIC		EACH	1
INDUCTIVE LOOP DETECTOR		EACH	6
REMOVE EXISTING TRAFFIC SIGNAL EQUIPMENT		EACH	1
RELOCATE EXISTING EMERGENCY VEHICLE PRIORITY GPS SYSTEM		EACH	1
RELOCATE EXISTING UPS BATTERY BACK-UP SYSTEM		EACH	1

THE FOLLOWING EXISTING TRAFFIC SIGNAL EQUIPMENT SHALL BE REMOVED BY THE CONTRACTOR, SHALL REMAIN THE PROPERTY OF THE OF THE VILLAGE OF BOLINGBROOK, AND SHALL BE DELIVERED BY THE CONTRACTOR TO THE VILLAGE YARD AS PER THE TRAFFIC SIGNAL SPECIFICATIONS.

1 EACH CONTROLLER AND CABINET (COMPLETE)



PROPOSED EMERGENCY VEHICLE PREEMPTORS			
EMERGENCY VEHICLE PREEMPTOR	3	4	5
MOVEMENT	→	↙	↘

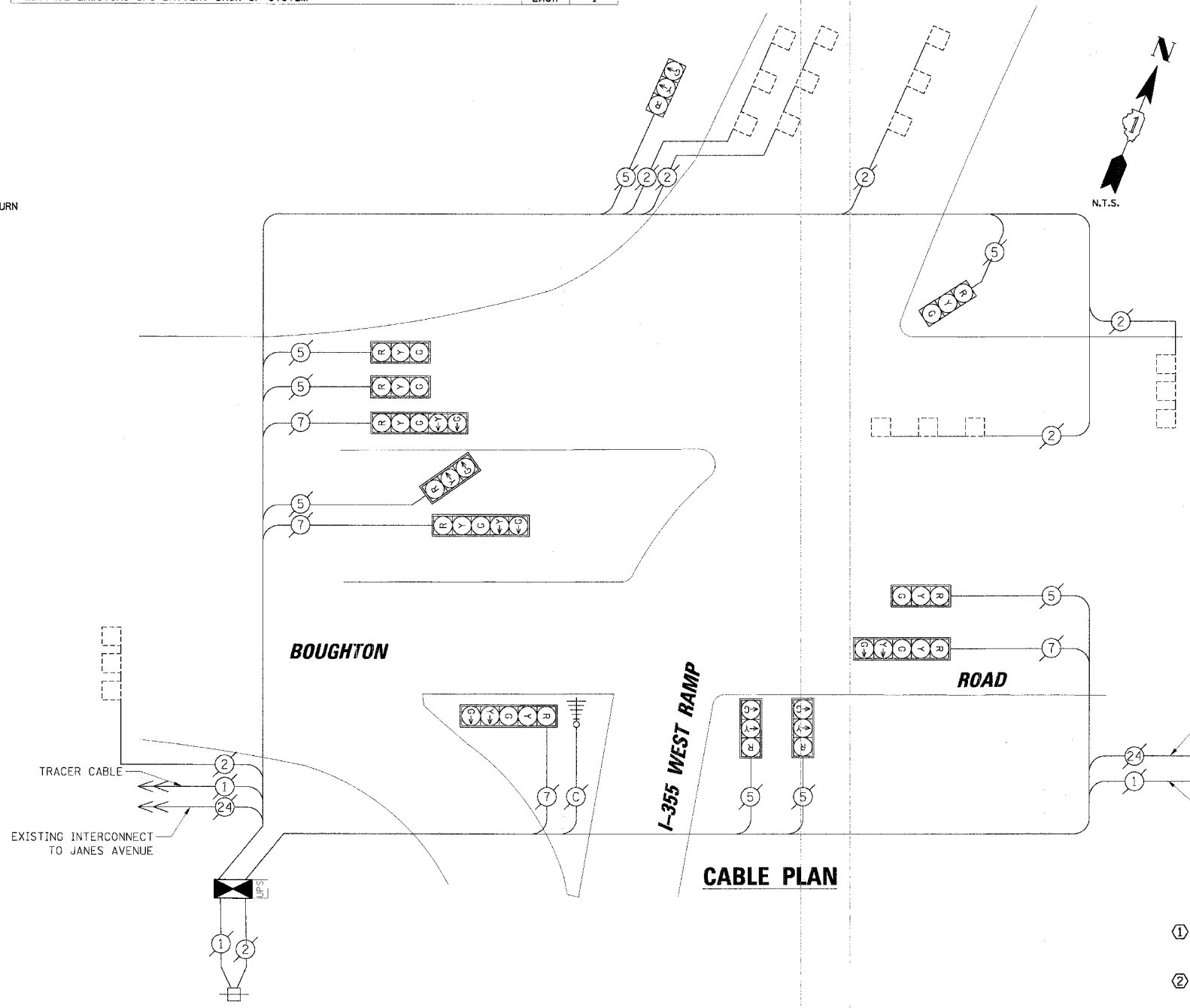


I.D.O.T. TRAFFIC SIGNAL INSTALLATION ELECTRICAL SERVICE REQUIREMENTS				TOTAL WATTAGE
TYPE	NO. OF LAMPS	WATTAGE X INCAND.	LED X % OPERATION	
SIGNAL (RED)	12	17	0.50	102.00
(YELLOW)	12	25	0.25	75.00
(GREEN)	12	15	0.25	45.00
ARROW	8	12	0.10	9.690
PED. SIGNAL	-	25	1.00	-
CONTROLLER	1	100	1.00	100.00
ILLUM. SIGN	-	25	0.05	-
FLASHER	-	-	0.50	-
ENERGY COSTS TO:				TOTAL = 331.60

VILLAGE OF BOLINGBROOK  
 375 BRIARCLIFF ROAD  
 BOLINGBROOK, ILLINOIS 60440-0951  
 ENERGY SUPPLY: CONTACT: DALE BOLLINGER  
 PHONE: (815) 724-5717  
 COMPANY: COMED

FOUNDATION (DEPTH)	FT. (m)	CABLE SLACK	FT. (m)	VERTICAL	FT. (m)
TYPE A - POST	4 (1.2)	HANDHOLE	6.5 (2.0)	ALL FOUNDATIONS	3.5 (1.0)
D - CONTROLLER	4 (1.2)	DOUBLE HANDHOLE	13 (4.0)	MAST ARM (L) POLE	20'±L-2'±
E - M. ARM POLE	-	SIGNAL POST	2 (1.0)	(6m±L-0.6m)±	-
24" (600mm)	10 (3.0)	CONTROLLER CAB.	1 (0.5)	BRACKET MOUNTED	13 (4.0)
30" (750mm)	15 (4.6)	FIBER OPTIC	13 (4.0)	PED. PUSHBUTTON	4 (1.2)
36" (900mm)	15 (4.6)	ELECTRIC SERVICE	1 (0.5)	ELECTRIC SERVICE	13.5 (4.1)
		GROUND CABLE	1 (0.5)	SERVICE TO GROUND	13.5 (4.1)
				POST MOUNTED	6 (1.8)

NOTE:  
 THE TRAFFIC SIGNAL CONTROLLER EQUIPMENT FOR THIS PROJECT SHALL BE "ECONOLITE" TO MATCH THE EXISTING ADJACENT SYSTEM.



EXISTING	PROPOSED	CABLE PLAN LEGEND
(Symbol)	(Symbol)	8" (200mm) TRAFFIC SIGNAL SECTION
(Symbol)	(Symbol)	12" (300mm) TRAFFIC SIGNAL SECTION
(Symbol)	(Symbol)	12" (300mm) PEDESTRIAN SIGNAL SECTION
(Symbol)	(Symbol)	12" (300mm) PEDESTRIAN SIGNAL SECTION
(Symbol)	(Symbol)	CONTROLLER CABINET SERVICE INSTALLATION
(Symbol)	(Symbol)	TELEPHONE INSTALLATION
(Symbol)	(Symbol)	VEHICLE DETECTOR, INDUCTION LOOP
(Symbol)	(Symbol)	MAGNETIC DETECTOR
(Symbol)	(Symbol)	EMERGENCY VEHICLE LIGHT DETECTOR
(Symbol)	(Symbol)	CONFIRMATION BEACON
(Symbol)	(Symbol)	PUSHBUTTON DETECTOR
(Symbol)	(Symbol)	DENOTES NUMBER OF CONDUCTORS. ALL CABLE NO. 14 EXCEPT AS INDICATED. ALL LOOP DETECTOR CABLE TO BE SHIELDED.
(Symbol)	(Symbol)	GROUND CABLE IN CONDUIT NO. 6 SOLID COPPER (GREEN)
(Symbol)	(Symbol)	FIBER OPTIC CABLE IN CONDUIT NO. 62.5/125 2-MM12F SM12F
(Symbol)	(Symbol)	SIGNAL FACE WITH BACKPLATE. "P" INDICATES PROGRAMMED HEAD.
(Symbol)	(Symbol)	RAILROAD CONTROL CABINET
(Symbol)	(Symbol)	ILLUMINATED SIGN "NO LEFT TURN"
(Symbol)	(Symbol)	ILLUMINATED SIGN "NO RIGHT TURN"
(Symbol)	(Symbol)	GROUND ROD AT HANDHOLE (H), DOUBLE HANDHOLE (H), OR CONTROLLER (C) OR MAST ARM POLE (MA)
(Symbol)	(Symbol)	GROUND ROD AT POST (P) OR MAST ARM POLE (MA)
(Symbol)	(Symbol)	GROUND ROD AT ELECTRIC SERVICE INSTALLATION
(Symbol)	(Symbol)	ILLUMINATED STREET NAME SIGN
(Symbol)	(Symbol)	EMERGENCY VEHICLE SYSTEM ANTENNA
(Symbol)	(Symbol)	LUMINAIRE
(Symbol)	(Symbol)	COAXIAL CABLE
(Symbol)	(Symbol)	UNINTERRUPTIBLE POWER SUPPLY

CONSTRUCTION NOTES:

- REMOVE EXISTING CABINET AND CONTROLLER. INSTALL NEW CONTROLLER AND TYPE V CABINET ON EXISTING FOUNDATION, AND FIBER OPTIC TRANSCIVER.
- RELOCATE EXISTING EVP AND UPS UNITS.

REVISIONS	
NAME	DATE

ILLINOIS DEPARTMENT OF TRANSPORTATION  
**SCHEDULE OF QUANTITIES, CABLE PLAN AND PHASE DESIGNATION DIAGRAM**  
 BOUGHTON ROAD AND I-355 WEST RAMP  
 BOLINGBROOK, ILLINOIS  
 SCALE: N.T.S. DATE: 4/7/2006  
 DRAWN BY: FCP/FPB  
 DESIGNED BY: MKW  
 CHECKED BY: MJT