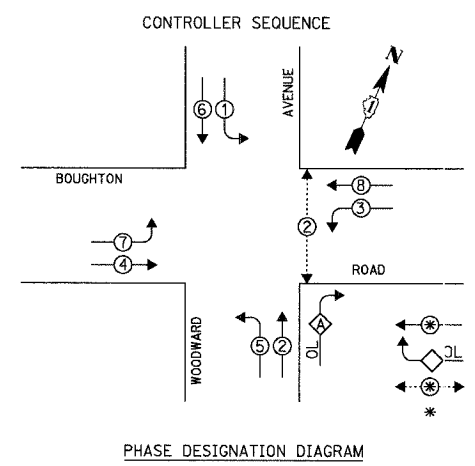


F.A.I.L. SECTION	COUNTY	TOTAL SHEETS	SHEET NO.
3580 04-00043-00-TL	WILL	54	30
STA. TO STA.		ILLINOIS FED. AID PROJECT	
FED. ROAD DIST. NO.		CONTRACT NO.: 83855	

SCHEDULE OF QUANTITIES			
ITEM	UNIT	TOTAL	
MAINTENANCE OF EXISTING TRAFFIC SIGNAL INSTALLATION	EACH	1	
TRANSCEIVER - FIBER OPTIC	EACH	1	
MODIFY EXISTING CONTROLLER	EACH	1	

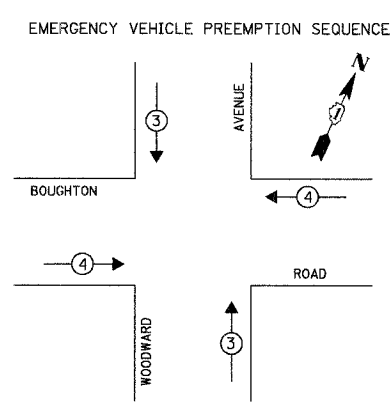


**LEGEND**

- DUAL ENTRY PHASE
- OVERLAP
- PEDESTRIAN PHASE
- NUMBER REFERS TO ASSOCIATED PHASE

**OVERLAP LETTER**    **PERMISSIVE PHASE**    **PROTECTED PHASE**

A = 2 + 3



PROPOSED EMERGENCY VEHICLE PREEMPTORS			
EMERGENCY VEHICLE PREEMPTOR	3	4	
MOVEMENT	↓ ↑	← →	

I.D.O.T. TRAFFIC SIGNAL INSTALLATION ELECTRICAL SERVICE REQUIREMENTS					TOTAL WATTAGE
TYPE	NO. OF LAMPS	WATTAGE X INCAND.	LED	% OPERATION	
SIGNAL (RED)	13		17	0.50	110.50
(YELLOW)	13		25	0.25	81.25
(GREEN)	13		15	0.25	48.75
ARROW	20		12	0.10	24.00
PED. SIGNAL	-		25	1.00	-
CONTROLLER	1		100	1.00	100.00
ILLUM. SIGN	-		25	0.05	-
LUMINAIRE	4	250	-	0.50	500.00
FLASHER	-		-	0.50	-
<b>TOTAL =</b>					<b>864.50</b>

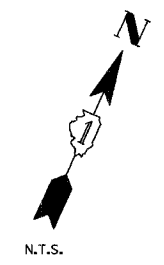
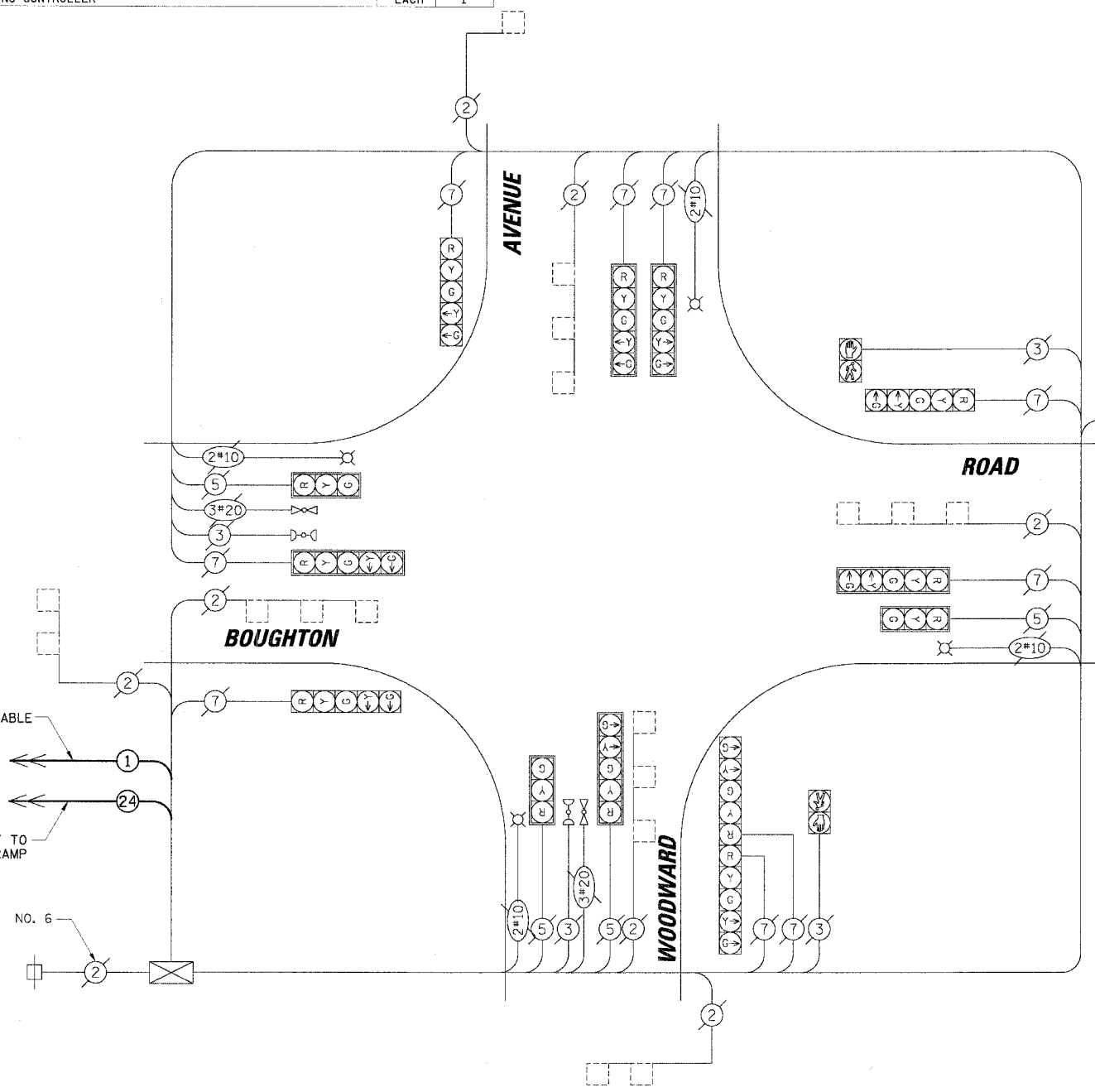
**ENERGY COSTS TO:**

**DuPAGE COUNTY**  
421 N. COUNTY FARM ROAD  
WHEATON, IL 60187

ENERGY SUPPLY: CONTACT: DALE BOLLINGER  
PHONE: (815) 724-5717  
COMPANY: COMED

FOUNDATION (DEPTH)	FT. (m)	CABLE SLACK	FT. (m)	VERTICAL	FT. (m)
TYPE A - POST	4 (1.2)	HANDHOLE	6.5 (2.0)	ALL FOUNDATIONS	3.5 (1.0)
D - CONTROLLER	4 (1.2)	DOUBLE HANDHOLE	13 (4.0)	MAST ARM (L) POLE	20'+L-2'
E - M. ARM POLE		SIGNAL POST	2 (1.0)		(6m+L-0.6m)
24" (600mm)	10 (3.0)	CONTROLLER CAB.	1 (0.5)	BRACKET MOUNTED	13 (4.0)
30" (750mm)	15 (4.6)	FIBER OPTIC	13 (4.0)	PED. PUSHBUTTON	4 (1.2)
36" (900mm)	15 (4.6)	ELECTRIC SERVICE	1 (0.5)	ELECTRIC SERVICE	13.5 (4.1)
		GROUND CABLE	1 (0.5)	SERVICE TO GROUND	13.5 (4.1)
				POST MOUNTED	6 (1.8)

**NOTE:**  
THE TRAFFIC SIGNAL CONTROLLER EQUIPMENT FOR THIS PROJECT SHALL BE "ECONOLITE" TO MATCH THE EXISTING ADJACENT SYSTEM.



EXISTING	PROPOSED	
(Symbol)	(Symbol)	8" (200mm) TRAFFIC SIGNAL SECTION
(Symbol)	(Symbol)	12" (300mm) TRAFFIC SIGNAL SECTION
(Symbol)	(Symbol)	12" (300mm) PEDESTRIAN SIGNAL SECTION
(Symbol)	(Symbol)	12" (300mm) PEDESTRIAN SIGNAL SECTION
(Symbol)	(Symbol)	CONTROLLER CABINET
(Symbol)	(Symbol)	SERVICE INSTALLATION
(Symbol)	(Symbol)	TELEPHONE INSTALLATION
(Symbol)	(Symbol)	VEHICLE DETECTOR, INDUCTION LOOP
(Symbol)	(Symbol)	MAGNETIC DETECTOR
(Symbol)	(Symbol)	EMERGENCY VEHICLE LIGHT DETECTOR
(Symbol)	(Symbol)	CONFIRMATION BEACON
(Symbol)	(Symbol)	PUSHBUTTON DETECTOR
(Symbol)	(Symbol)	DENOTES NUMBER OF CONDUCTORS. ALL CABLE NO. 14 EXCEPT AS INDICATED. ALL LOOP DETECTOR CABLE TO BE SHIELDED.
(Symbol)	(Symbol)	GROUND CABLE IN CONDUIT NO. 6 SOLID COPPER (GREEN)
(Symbol)	(Symbol)	FIBER OPTIC CABLE IN CONDUIT NO. 62.5/125 2-MM12F SM12F
(Symbol)	(Symbol)	SIGNAL FACE WITH BACKPLATE. "P" INDICATES PROGRAMMED HEAD.
(Symbol)	(Symbol)	RAILROAD CONTROL CABINET
(Symbol)	(Symbol)	ILLUMINATED SIGN "NO LEFT TURN"
(Symbol)	(Symbol)	ILLUMINATED SIGN "NO RIGHT TURN"
(Symbol)	(Symbol)	GROUND ROD AT HANDHOLE (H), DOUBLE HANDHOLE (H), OR CONTROLLER (C)
(Symbol)	(Symbol)	GROUND ROD AT POST (P) OR MAST ARM POLE (MA)
(Symbol)	(Symbol)	GROUND ROD AT ELECTRIC SERVICE INSTALLATION
(Symbol)	(Symbol)	ILLUMINATED STREET NAME SIGN
(Symbol)	(Symbol)	EMERGENCY VEHICLE SYSTEM ANTENNA
(Symbol)	(Symbol)	LUMINAIRE
(Symbol)	(Symbol)	COAXIAL CABLE

**CONSTRUCTION NOTES:**

① INSTALL NEW FIBER OPTIC TRANSCEIVER.

REVISIONS	
NAME	DATE

ILLINOIS DEPARTMENT OF TRANSPORTATION

**SCHEDULE OF QUANTITIES, CABLE PLAN AND PHASE DESIGNATION DIAGRAM**

BOUGHTON ROAD AND WOODWARD AVENUE  
BOLINGBROOK, ILLINOIS

SCALE: N.T.S.  
DATE: 4/7/2006

DRAWN BY: FCP/FPB  
DESIGNED BY: MKW  
CHECKED BY: MJT

CHRISTOPHER B. BURKE ENGINEERING LTD.  
 8575 West Higgins Road, Suite 600  
 Rosemont, Illinois 60018  
 (847) 823-0500  
 PLAN NO. 37  
 DATE 3/27/06  
 CHECKED BY: [Signature]  
 DRAWN BY: [Signature]