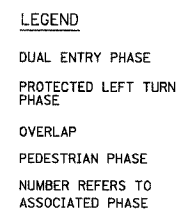
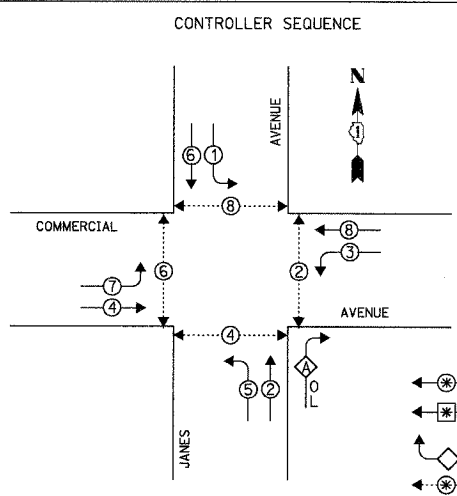


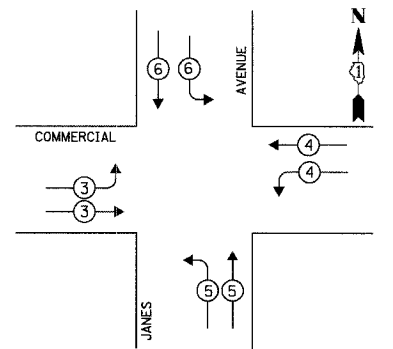
F.A.U. RTE.	SECTION	COUNTY	TOTAL SHEETS	SHEET NO.
3580	04-00043-00-TL	WILL	54	32
STA.	TO STA.			
FED. ROAD DIST. NO.	ILLINOIS FED. AID PROJECT			
CONTRACT NO.: 83855				



PHASE DESIGNATION DIAGRAM

OVERLAP LETTER	PERMISSIVE PHASE	PROTECTED PHASE
A	= 2	+ 3

EMERGENCY VEHICLE PREEMPTION SEQUENCE



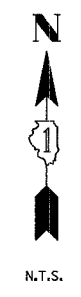
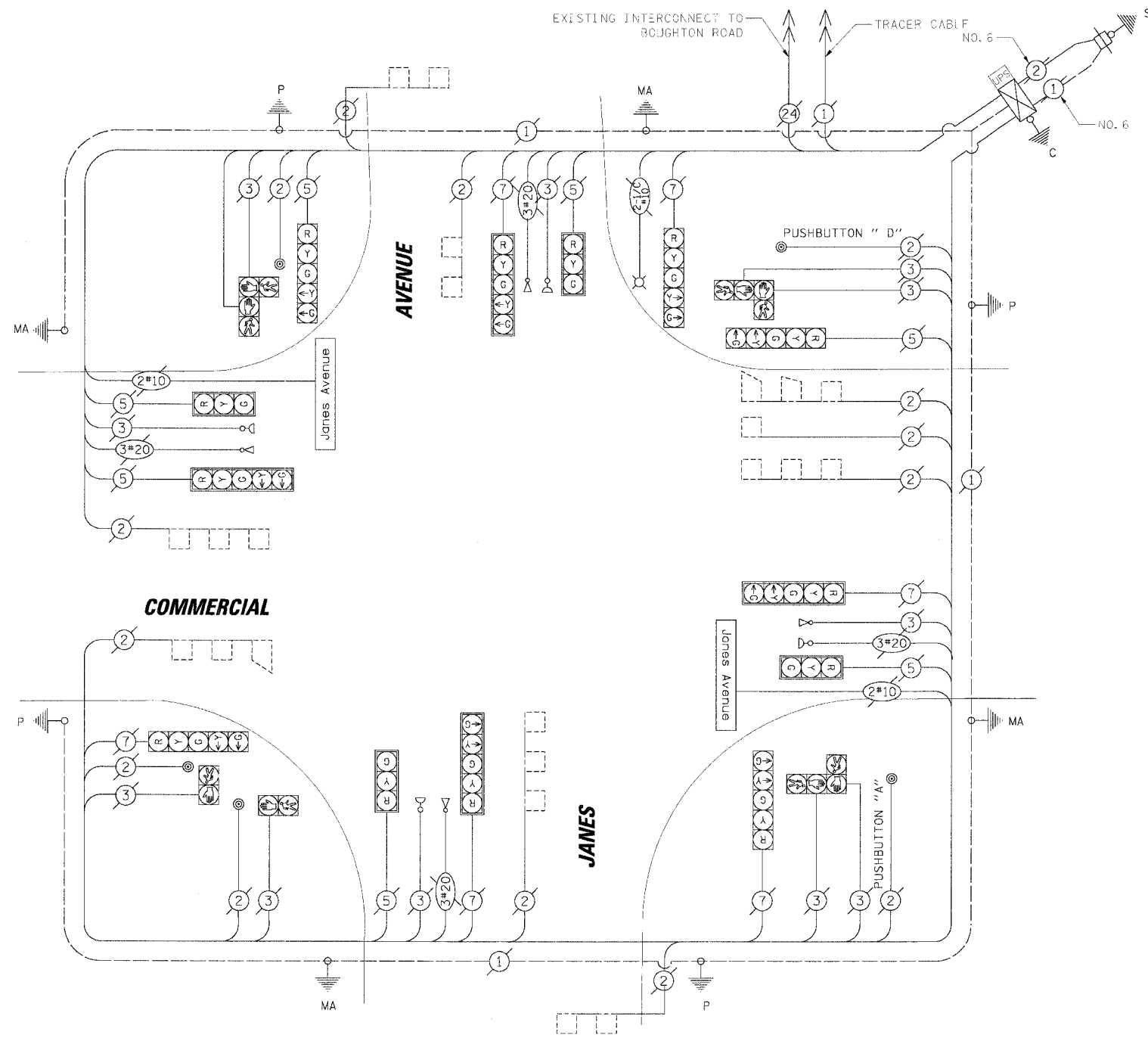
EMERGENCY VEHICLE PREEMPTOR	3	4	5	6
MOVEMENT				

TYPE	NO. OF LAMPS	WATTAGE X INCAND.	LED x % OPERATION	TOTAL WATTAGE
SIGNAL (RED)	24	17	0.50	204.00
(YELLOW)	24	25	0.25	150.00
(GREEN)	24	15	0.25	90.00
ARROW	20	12	0.10	24.00
PED. SIGNAL	12	25	1.00	300.00
CONTROLLER	1	100	1.00	100.00
ILLUM. SIGN	-	25	0.05	-
ILLUM. ST. NAME SIGN	8	24 FLOURES-CENT	0.50	96.00
FLASHER	-	0.50	0.50	964.00
ENERGY COSTS TO:				TOTAL = 515.20

VILLAGE OF BOLINGBROOK  
 375 BRIARCLIFF ROAD  
 BOLINGBROOK, ILLINOIS 60440-0951  
 ENERGY SUPPLY: CONTACT: DALE BOLLINGER  
 PHONE: (815) 724-5717  
 COMPANY: COMED

FOUNDATION (DEPTH)	FT. (m)	CABLE SLACK	FT. (m)	VERTICAL	FT. (m)
TYPE A - POST	4 (1.2)	HANDHOLE	6.5 (2.0)	ALL FOUNDATIONS	3.5 (1.0)
D - CONTROLLER	4 (1.2)	DOUBLE HANDHOLE	13 (4.0)	MAST ARM (L) POLE	20'+L-2=
E - M. ARM POLE		SIGNAL POST	2 (1.0)	(6m+L-0.6m)=	
24" (600mm)	10 (3.0)	CONTROLLER CAB.	1 (0.5)	BRACKET MOUNTED	13 (4.0)
30" (750mm)	15 (4.6)	FIBER OPTIC	13 (4.0)	PED. PUSHBUTTON	4 (1.2)
36" (900mm)	15 (4.6)	ELECTRIC SERVICE	1 (0.5)	ELECTRIC SERVICE	13.5 (4.1)
		GROUND CABLE	1 (0.5)	SERVICE TO GROUND	13.5 (4.1)
				POST MOUNTED	6 (1.8)

NOTE:  
 THE TRAFFIC SIGNAL CONTROLLER EQUIPMENT FOR THIS PROJECT SHALL BE "ECONOLITE" TO MATCH THE EXISTING ADJACENT SYSTEM.



CABLE PLAN LEGEND

- EXISTING PROPOSED
- 8" (200mm) TRAFFIC SIGNAL SECTION
- 12" (300mm) TRAFFIC SIGNAL SECTION
- 12" (300mm) PEDESTRIAN SIGNAL SECTION
- 12" (300mm) PEDESTRIAN SIGNAL SECTION
- CONTROLLER CABINET SERVICE INSTALLATION
- TELEPHONE INSTALLATION
- VEHICLE DETECTOR, INDUCTION LOOP
- MAGNETIC DETECTOR
- EMERGENCY VEHICLE LIGHT DETECTOR
- CONFIRMATION BEACON
- PUSHBUTTON DETECTOR
- DENOTES NUMBER OF CONDUCTORS. ALL CABLE NO. 14 EXCEPT AS INDICATED. ALL LOOP DETECTOR CABLE TO BE SHIELDED.
- GROUND CABLE IN CONDUIT NO. 6 SOLID COPPER (GREEN)
- FIBER OPTIC CABLE IN CONDUIT NO. 62.5/125 2-MM12F SM12F
- SIGNAL FACE WITH BACKPLATE. "P" INDICATES PROGRAMMED HEAD.
- RAILROAD CONTROL CABINET
- ILLUMINATED SIGN "NO LEFT TURN"
- ILLUMINATED SIGN "NO RIGHT TURN"
- GROUND ROD AT HANDHOLE (H), DOUBLE HANDHOLE (HH), OR CONTROLLER (C) OR MAST ARM POLE (MA)
- GROUND ROD AT POST (P) OR MAST ARM POLE (MA)
- GROUND ROD AT ELECTRIC SERVICE INSTALLATION
- ILLUMINATED STREET NAME SIGN
- EMERGENCY VEHICLE SYSTEM ANTENNA
- LUMINAIRE
- COAXIAL CABLE
- UNINTERRUPTIBLE POWER SUPPLY

CONSTRUCTION NOTE:  
 ① NO MODIFICATIONS REQUIRED.

FOR INFORMATION ONLY

REVISIONS	NAME	DATE

ILLINOIS DEPARTMENT OF TRANSPORTATION  
**SCHEDULE OF QUANTITIES, CABLE PLAN AND PHASE DESIGNATION DIAGRAM**  
 JAMES AVENUE AND COMERCIAL  
 BOLINGBROOK, ILLINOIS  
 SCALE: N.T.S. DATE: 4/7/2006  
 DRAWN BY: FCP/FPB  
 DESIGNED BY: MKW  
 CHECKED BY: MJT

CHRISTOPHER B. BURKE ENGINEERING LTD.  
 805 West Higgins Road, Suite 600  
 Bolingbrook, IL 60440  
 (815) 823-0500  
 DATE: \_\_\_\_\_ BY: \_\_\_\_\_  
 CHECKED: \_\_\_\_\_  
 APPROVED: \_\_\_\_\_  
 PROJECT NO.: \_\_\_\_\_  
 SHEET NO.: \_\_\_\_\_