

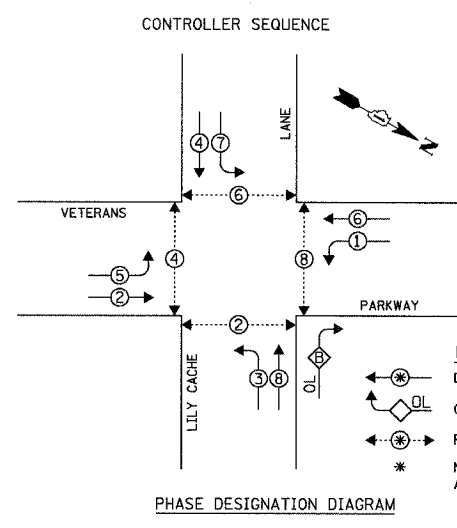
|                     |        |                           |           |
|---------------------|--------|---------------------------|-----------|
| F.A.L.L. SECTION    | COUNTY | TOTAL SHEETS              | SHEET NO. |
| 3580 04-00043-00-TL | WILL   | 54                        | 38        |
| STA. TO STA.        |        | ILLINOIS FED. AID PROJECT |           |
| CONTRACT NO. 83855  |        |                           |           |

| ITEM  | UNIT | TOTAL |
|---|------|-------|
| CONTROLLER CABINET TYPE V   | EACH | 1     |
| MAINTENANCE OF EXISTING TRAFFIC SIGNAL INSTALLATION               | EACH | 1     |
| TRANSCIEIVER - FIBER OPTIC  | EACH | 1     |
| INDUCTIVE LOOP DETECTOR   | EACH | 22    |
| RELOCATE EXISTING TRAFFIC SIGNAL CONTROLLER                       | EACH | 1     |
| RELOCATE EXISTING EMERGENCY VEHICLE PRIORITY SYSTEM, PHASING UNIT | EACH | 1     |
| REMOVE EXISTING TRAFFIC SIGNAL EQUIPMENT                          | EACH | 1     |
| UNINTERRUPTIBLE POWER SUPPLY, STANDARD                            | EACH | 1     |

THE FOLLOWING EXISTING TRAFFIC SIGNAL EQUIPMENT SHALL BE REMOVED BY THE CONTRACTOR, SHALL REMAIN THE PROPERTY OF THE OF THE VILLAGE OF BOLINGBROOK, AND SHALL BE DELIVERED BY THE CONTRACTOR TO THE VILLAGE YARD AS PER THE TRAFFIC SIGNAL SPECIFICATIONS.

1 EACH CABINET

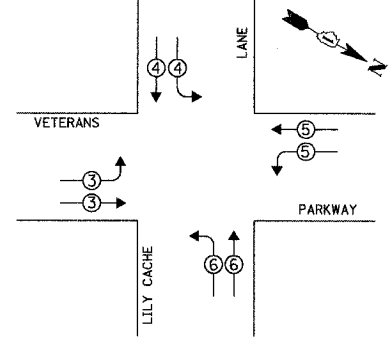
| EXISTING | PROPOSED | DESCRIPTION   |
|----------|----------|---|
|          |          | 8" (200mm) TRAFFIC SIGNAL SECTION   |
|          |          | 12" (300mm) TRAFFIC SIGNAL SECTION  |
|          |          | 12" (300mm) PEDESTRIAN SIGNAL SECTION   |
|          |          | 12" (300mm) PEDESTRIAN SIGNAL SECTION   |
|          |          | CONTROLLER CABINET  |
|          |          | SERVICE INSTALLATION  |
|          |          | TELEPHONE INSTALLATION  |
|          |          | VEHICLE DETECTOR, INDUCTION LOOP  |
|          |          | MAGNETIC DETECTOR   |
|          |          | EMERGENCY VEHICLE LIGHT DETECTOR  |
|          |          | CONFIRMATION BEACON   |
|          |          | PUSHBUTTON DETECTOR   |
|          |          | DENOTES NUMBER OF CONDUCTORS. ALL CABLE NO. 14 EXCEPT AS INDICATED. ALL LOOP DETECTOR CABLE TO BE SHIELDED. |
|          |          | GROUND CABLE IN CONDUIT NO. 6 SOLID COPPER (GREEN)  |
|          |          | FIBER OPTIC CABLE IN CONDUIT NO. 62.5/125 2-MM12F SM12F   |
|          |          | SIGNAL FACE WITH BACKPLATE. "P" INDICATES PROGRAMMED HEAD.  |
|          |          | RAILROAD CONTROL CABINET  |
|          |          | ILLUMINATED SIGN "NO LEFT TURN"   |
|          |          | ILLUMINATED SIGN "NO RIGHT TURN"  |
|          |          | GROUND ROD AT HANDHOLE (H), DOUBLE HANDHOLE (HH), OR CONTROLLER (C) OR MAST ARM POLE (MA)                   |
|          |          | GROUND ROD AT ELECTRIC SERVICE INSTALLATION   |
|          |          | ILLUMINATED STREET NAME SIGN  |
|          |          | EMERGENCY VEHICLE SYSTEM ANTENNA  |
|          |          | LUMINAIRE   |
|          |          | COAXIAL CABLE   |
|          |          | UNINTERRUPTIBLE POWER SUPPLY  |



RIGHT TURN OVERLAP PHASE DESIGNATION

| OVERLAP LETTER | PERMISSIVE PHASE | PROTECTED PHASE |
|----------------|------------------|-----------------|
| D              | 8                | 1               |

PROPOSED EMERGENCY VEHICLE PREEMPTION SEQUENCE



| EMERGENCY VEHICLE PREEMPTOR | 3 | 4 | 5 | 6 |
|-----------------------------|---|---|---|---|
| MOVEMENT                    |   |   |   |   |

| I.D.O.T. TRAFFIC SIGNAL INSTALLATION ELECTRICAL SERVICE REQUIREMENTS |              |                   |                   | TOTAL WATTAGE |
|--|--------------|-------------------|-------------------|---------------|
| TYPE   | NO. OF LAMPS | WATTAGE X INCAND. | LED x % OPERATION |               |
| SIGNAL (RED)   | 16           | 17                | 0.50              | 136.00        |
| (YELLOW)   | 16           | 25                | 0.25              | 100.00        |
| (GREEN)  | 16           | 15                | 0.25              | 60.00         |
| ARROW  | 20           | 12                | 0.10              | 19.20         |
| PED. SIGNAL  | 8            | 25                | 1.00              | 100.00        |
| CONTROLLER   | 1            | 100               | 1.00              | 100.00        |
| ILLUM. SIGN  | -            | 25                | 0.05              | -             |
| ILLUM. ST NAME SIGN  | -            | 60                | 0.50              | 120.00        |
| FLASHER  | -            | -                 | 0.50              | -             |
| TOTAL =  |              |                   |                   | 740.00        |

ENERGY COSTS TO: TOTAL = 740.00

VILLAGE OF BOLINGBROOK  
375 BRIARCLIFF ROAD  
BOLINGBROOK, ILLINOIS 60440-0951

ENERGY SUPPLY: CONTACT: DALE BOLLINGER  
PHONE: (815) 724-5717  
COMPANY: COMED

| FOUNDATION (DEPTH) | FT. (m) | CABLE SLACK     | FT. (m)   | VERTICAL          | FT. (m)    |
|--------------------|---------|-----------------|-----------|-------------------|------------|
| TYPE A - POST      | 4 (1.2) | HANDHOLE        | 6.5 (2.0) | ALL FOUNDATIONS   | 3.5 (1.0)  |
| D - CONTROLLER     | 4 (1.2) | DOUBLE HANDHOLE | 13 (4.0)  | MAST ARM (L) POLE | 20'+L-2'   |
| E - M. ARM POLE    |         | SIGNAL POST     | 2 (1.0)   | (6m+L-0.6m)       |            |
|                    |         | 24" (600mm)     | 10 (3.0)  | CONTROLLER CAB.   | 13 (4.0)   |
|                    |         | 30" (750mm)     | 15 (4.6)  | FIBER OPTIC       | 4 (1.2)    |
|                    |         | 36" (900mm)     | 15 (4.6)  | ELECTRIC SERVICE  | 13.5 (4.1) |
|                    |         |                 |           | SERVICE TO GROUND | 13.5 (4.1) |
|                    |         |                 |           | POST MOUNTED      | 6 (1.8)    |

NOTE: THE TRAFFIC SIGNAL CONTROLLER EQUIPMENT FOR THIS PROJECT SHALL BE "ECONOLITE" TO MATCH THE EXISTING ADJACENT SYSTEM.

NOTE: PUSHBUTTON "A" SHALL PLACE A CALL IN PHASES 2 & 4.

CONSTRUCTION NOTES:

- REMOVE EXISTING CABINET. INSTALL NEW TYPE V CABINET ON EXISTING FOUNDATION, FIBER OPTIC TRANSCIEIVER, AND TECH-POWER M-E SERIES UPS.
- RELOCATE EXISTING CONTROLLER AND EVP UNIT.

| REVISIONS |      |
|-----------|------|
| NAME      | DATE |
|           |      |
|           |      |
|           |      |

ILLINOIS DEPARTMENT OF TRANSPORTATION

**SCHEDULE OF QUANTITIES, CABLE PLAN AND PHASE DESIGNATION DIAGRAM**

VETERANS PARKWAY AND LILY CACHE LANE  
BOLINGBROOK, ILLINOIS

SCALE: N.T.S.  
DATE: 4/7/2006

DRAWN BY: FCP/FPB  
DESIGNED BY: MKW  
CHECKED BY: MJT

CHRISTOPHER B. BURKE ENGINEERING LTD.  
 5575 West Higgins Road, Suite 600  
 Rosemont, Illinois 60018  
 (847) 823-0500  
 PLAN NO. 05599  
 DATE: 4/7/2006  
 BY: MKW  
 CHECKED: MJT  
 IN CHARGE: FCP