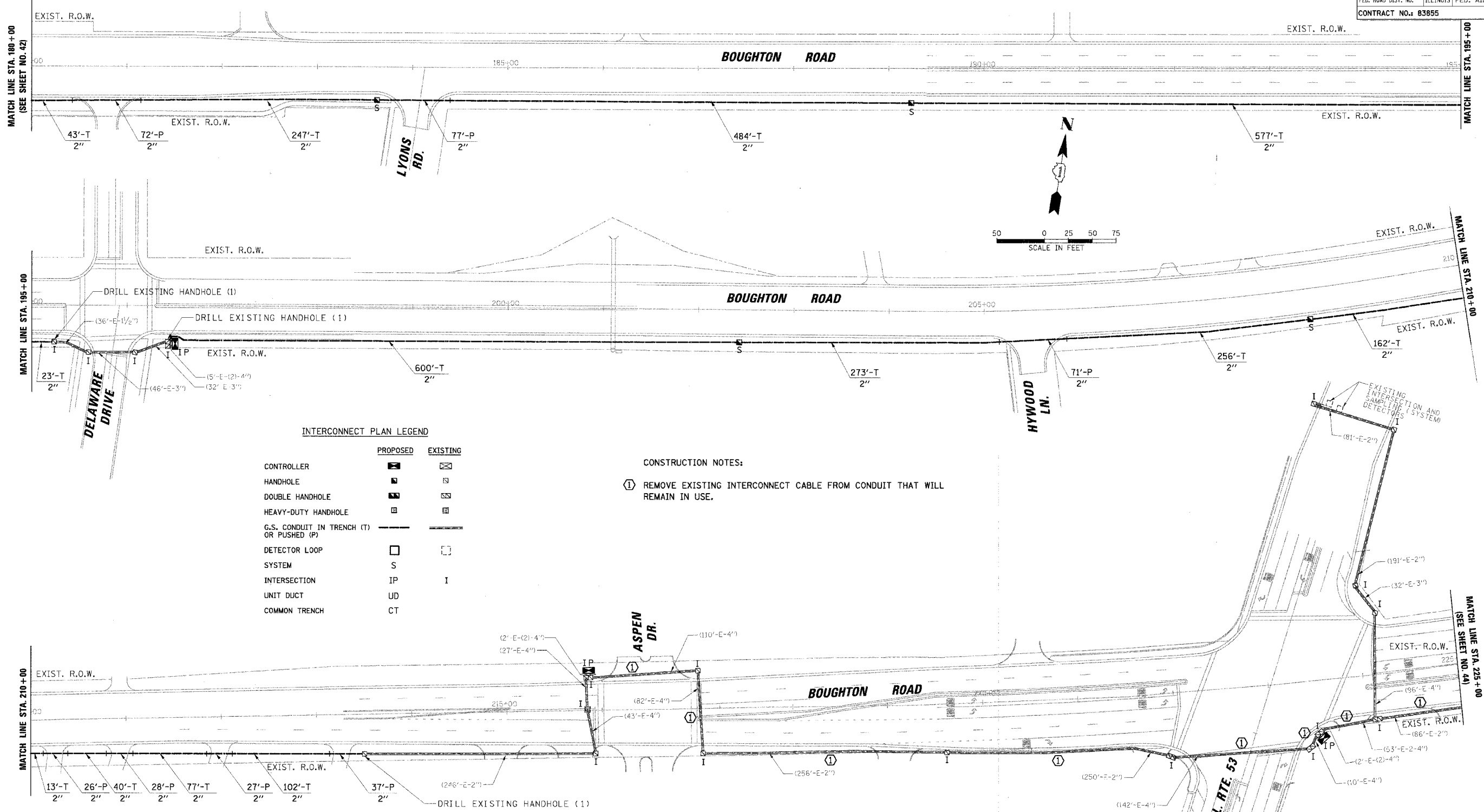


F.A.U. RTE.	SECTION	COUNTY	TOTAL SHEETS	SHEET NO.
3580	D4-00043-00-TL	WILL	54	43
STA.		TO STA.		
FED. ROAD DIST. NO.		ILLINOIS FED. AID PROJECT		
CONTRACT NO.: 83855				



INTERCONNECT PLAN LEGEND

	PROPOSED	EXISTING
CONTROLLER		
HANDHOLE		
DOUBLE HANDHOLE		
HEAVY-DUTY HANDHOLE		
G.S. CONDUIT IN TRENCH (T) OR PUSHED (P)		
DETECTOR LOOP		
SYSTEM	S	
INTERSECTION	IP	I
UNIT DUCT	UD	
COMMON TRENCH	CT	

CONSTRUCTION NOTES:
 ① REMOVE EXISTING INTERCONNECT CABLE FROM CONDUIT THAT WILL REMAIN IN USE.

RESTORATION OF WORK AREA. RESTORATION OF THE TRAFFIC SIGNAL WORK AREA SHALL BE INCIDENTAL TO THE RELATED PAY ITEM SUCH AS FOUNDATION, CONDUIT, HANDHOLE, TRENCH AND BACKFILL, ETC., AND NO EXTRA COMPENSATION SHALL BE ALLOWED. ALL ROADWAY SURFACES SUCH AS SHOULDERS, MEDIANS, SIDEWALKS, PAVEMENT, ETC. SHALL BE REPLACED IN KIND. ALL DAMAGE TO MOWED LAWNS SHALL BE REPLACED WITH AN APPROVED SOD, AND ALL DAMAGE TO UNMOWED FIELDS SHALL BE SEEDED IN ACCORDANCE WITH STANDARD SPECIFICATIONS 252 AND 250 RESPECTIVELY.

REVISIONS	
NAME	DATE

ILLINOIS DEPARTMENT OF TRANSPORTATION
INTERCONNECT PLAN
 BOUGHTON ROAD
 BOLINGBROOK, ILLINOIS
 SCALE: 1" = 50'
 DATE: 4/7/2006
 DRAWN BY: FCP/FPB
 DESIGNED BY: MKW
 CHECKED BY: MJT

DATE: 3/27/06
 BY: [Signature]
 CHECKED BY: [Signature]
 DATE: 3/27/06
 PROJECT: BOUGHTON ROAD INTERCONNECT PLAN
 DRAWN BY: FCP/FPB
 DESIGNED BY: MKW
 CHECKED BY: MJT
 DATE: 4/7/2006

CHRISTOPHER B. BURKE ENGINEERING LTD.
 8575 West Higgins Road, Suite 600
 Rosemont, Illinois 60018
 (847) 823-0500