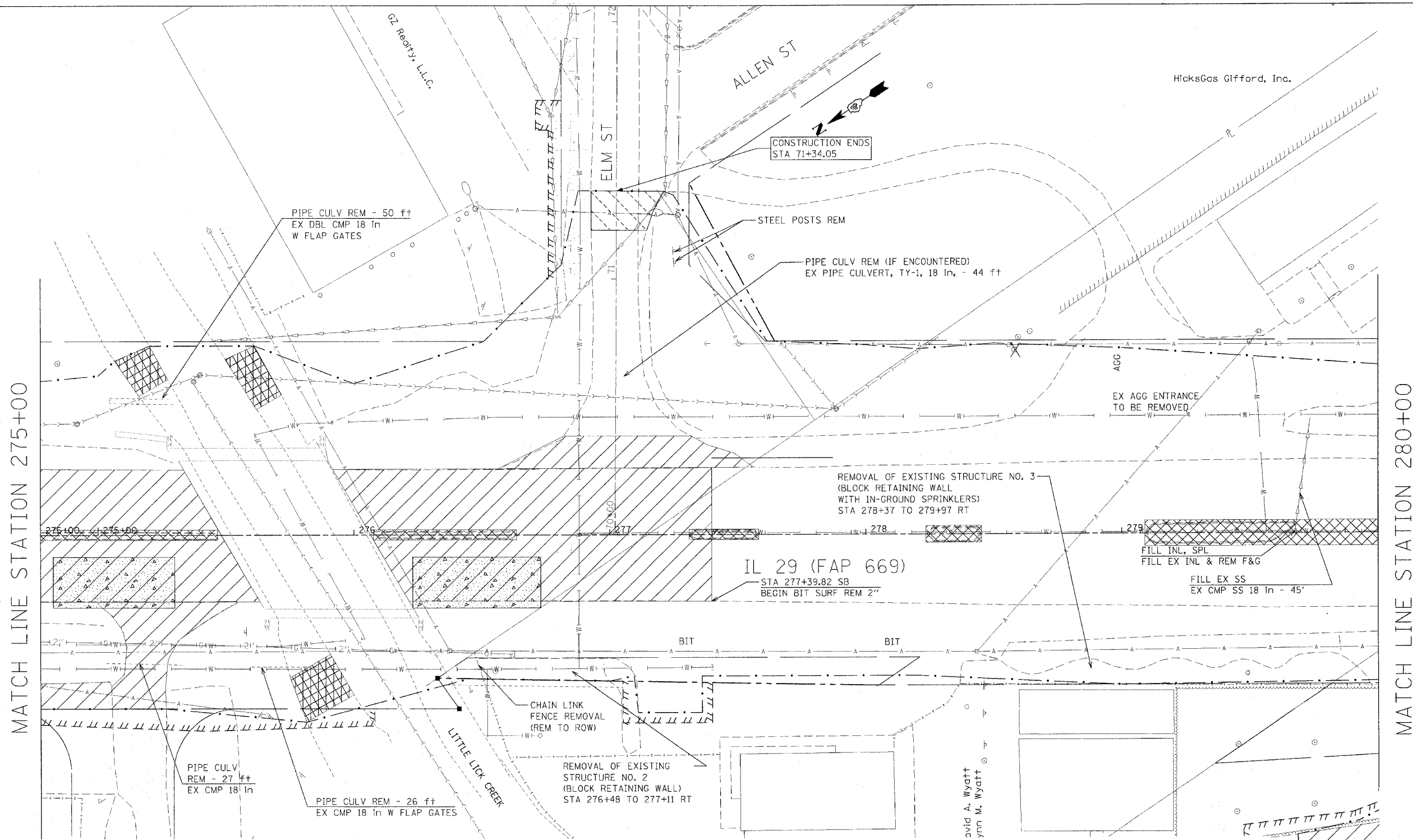


F.A.P. RTE.	SECTION	COUNTY	TOTAL SHEETS	SHEET NO.
669	11W-3,RS-8,*	TAZEWELL	442	147
STA. 275+00		TO STA.280+00		
FED. ROAD DIST. NO.		ILLINOIS	FED. AID PROJECT	



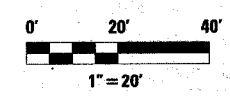
MATCH LINE STATION 275+00

MATCH LINE STATION 280+00

LEGEND FOR REMOVAL ITEMS

- | | | |
|----------------------------|--------------------------------|-------------------------------|
| PAVEMENT REMOVAL | MEDIAN REMOVAL | BUILDING REMOVAL |
| PAVEMENT REMOVAL (SPECIAL) | MEDIAN REMOVAL (PARTIAL DEPTH) | SPECIAL EXCAVATION |
| SHOULDER REMOVAL | CCC & G REMOVAL | TREE REMOVAL |
| DRIVEWAY PAVEMENT REMOVAL | GUARDRAIL REMOVAL | TREE REMOVAL (ACRE) |
| | | REVETMENT MAT REMOVAL |
| | | BIT SURF REM BUTT JOINT (SPL) |
| | | BIT SURF REM - BUTT JOINT |

NOTE: BIT SURF REM 2" FROM STA 258+00 TO STA 267+83 AND STA 277+39.82 TO 286+05 IN SOUTH BOUND LANES ONLY AND BIT SURF REM 1-1/2" ELSEWHERE ON IL 29 MAINLINE.



REVISIONS	
NAME	DATE

ILLINOIS DEPARTMENT OF TRANSPORTATION

REMOVAL PLANS

SCALE: VERT. HORIZ. DATE

DRAWN BY CHECKED BY

PLOT DATE = 4/26/2006
FILE NAME = c:\projects\275-280\plan\phase_11\280.in\proj.dgn
USER NAME = shapatz