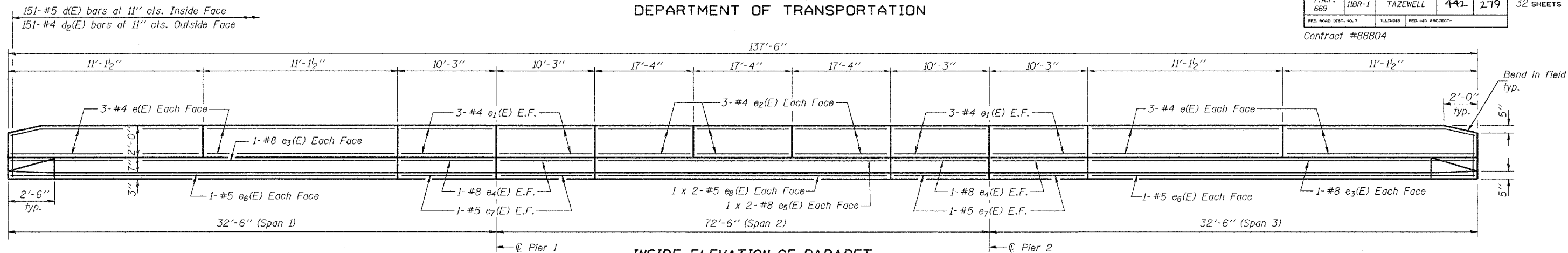
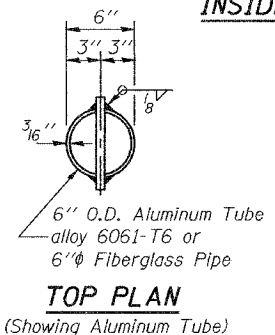
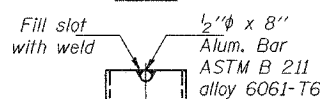
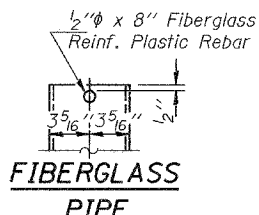
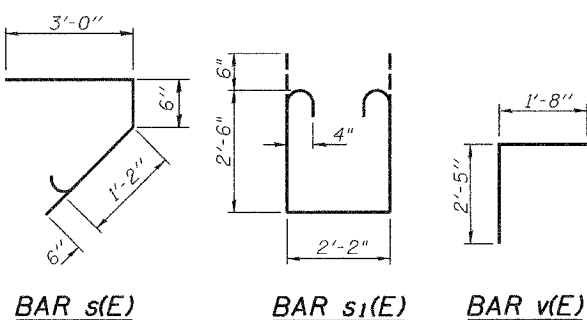


STATE OF ILLINOIS
DEPARTMENT OF TRANSPORTATION

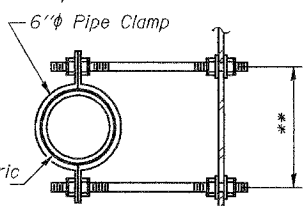
ROUTE NO.	SECTION	COUNTY	DATE	SHEET	SHEET NO. 10 32 SHEETS
F.A.P. 669	11BR-1	TAZEWELL	442	279	
FED. ROAD DIST. NO. 7	ILLINOIS	FED. AID PROJECT-			
Contract #88804					



INSIDE ELEVATION OF PARAPET
(Measured along inside face)



** Dimension as required by Pipe Clamp



SECTION B-B

1/8" elastomeric neoprene leveling pad according to Art. 1052.02 of the Standard Specifications. Cost included with Furnishing & Erecting Structural Steel.

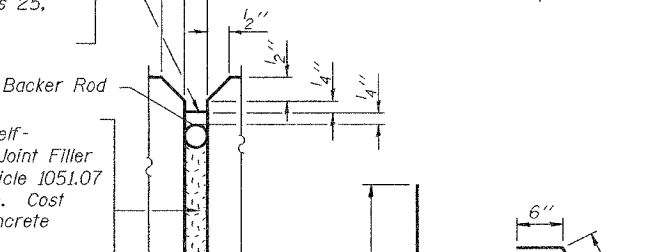
Non-staining gray one component non-sag elastomeric gun grade polyurethane sealant meeting the requirements of ASTM C-920, Type S, Grade NS, Class 25, Use T.

1/2" Preformed Self-Expanding Cork Joint Filler according to Article 1051.07 of the Std. Spec. Cost included with Concrete Superstructure.

Const. Jts. at Piers and locations as shown 1/8" Aluminum sheet ASTM B 209 alloy 3003-H14. Cost included with Concrete Superstructure

PARAPET JOINT DETAILS

SECTION A-A
(Dim. at Rt. L's except as noted)



Reinforcement bars designated (E) shall be epoxy coated.
Bars indicated thus 1 x 2-#5 etc. indicates 1 line of bars with 2 lengths per line.

BARS d(E) & d2(E) BAR d1(E) BAR d3(E) BAR d4(E)

SUPERSTRUCTURE
BILL OF MATERIAL

Bar	No.	Size	Length	Shape
a(E)	221	#5	46'-0"	—
a1(E)	166	#5	45'-2"	—
a2(E)	221	#5	40'-2"	—
a3(E)	166	#5	39'-4"	—
a4(E)	222	#6	4'-6"	—
a5(E)	4	#5	45'-10"	—
a6(E)	4	#5	39'-11"	—
b(E)	450	#5	29'-2"	—
b1(E)	462	#5	24'-8"	—
b2(E)	172	#6	39'-4"	—
d(E)	302	#5	3'-0"	—
d1(E)	290	#5	2'-5"	—
d2(E)	302	#4	3'-0"	—
d3(E)	302	#4	3'-7"	—
d4(E)	12	#5	2'-2"	—
e(E)	48	#4	10'-10"	—
e1(E)	48	#4	10'-0"	—
e2(E)	36	#4	17'-1"	—
e3(E)	8	#8	21'-11"	—
e4(E)	16	#8	9'-11"	—
e5(E)	8	#8	27'-7"	—
e6(E)	8	#5	21'-11"	—
e7(E)	16	#5	9'-11"	—
e8(E)	8	#5	26'-8"	—
m(E)	4	#6	46'-1"	—
m1(E)	4	#6	40'-2"	—
m2(E)	6	#6	46'-10"	—
m3(E)	6	#6	40'-11"	—
m4(E)	48	#6	8'-7"	—
m5(E)	12	#6	7'-0"	—
m6(E)	26	#6	5'-7"	—
m7(E)	4	#6	2'-7"	—
m8(E)	4	#6	2'-5"	—
s(E)	180	#5	5'-2"	—
s1(E)	180	#4	8'-2"	—
v(E)	172	#5	4'-1"	—
Reinforcement Bars, Epoxy Coated		Pound	83,230	
Concrete Superstructure		Cu. Yds.	364.0	
Bar Splicers		Each	575	

SUPERSTRUCTURE DETAILS
F.A.P. ROUTE 669 - SECTION 11BR-1
TAZEWELL COUNTY
STATION 301+87.90
STRUCTURE NO. 090-0172

DESIGNED	T.L.K.
CHECKED	A.M.J.
DRAWN	BECKY M. LEACH
CHECKED	A.M.J. & P.E.C.

EXAMINED	Thomas J. Domagala	May 18, 2006
PASSED	Ralph E. Carlson	