

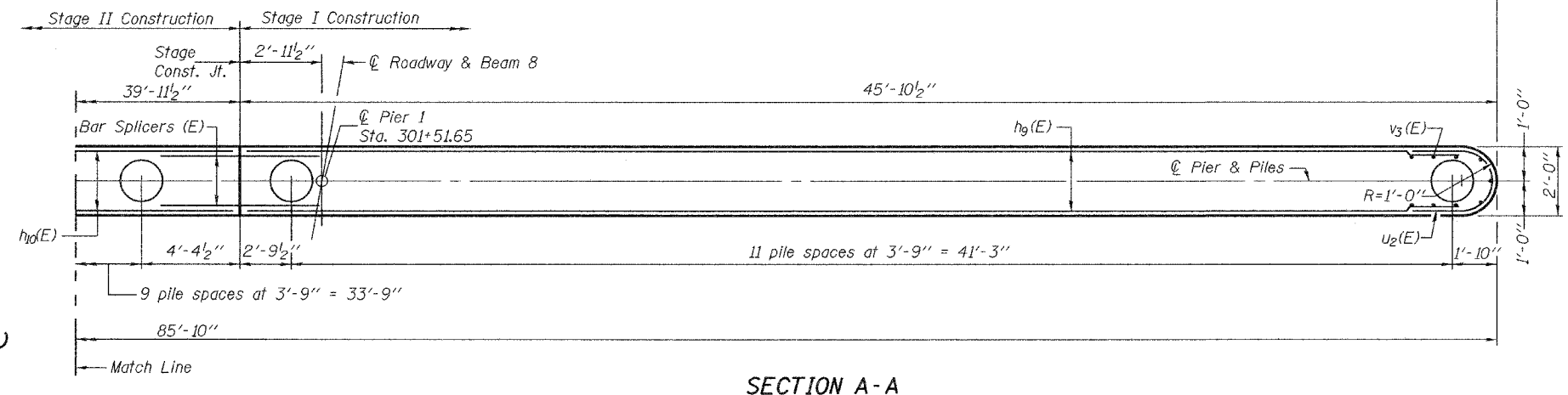
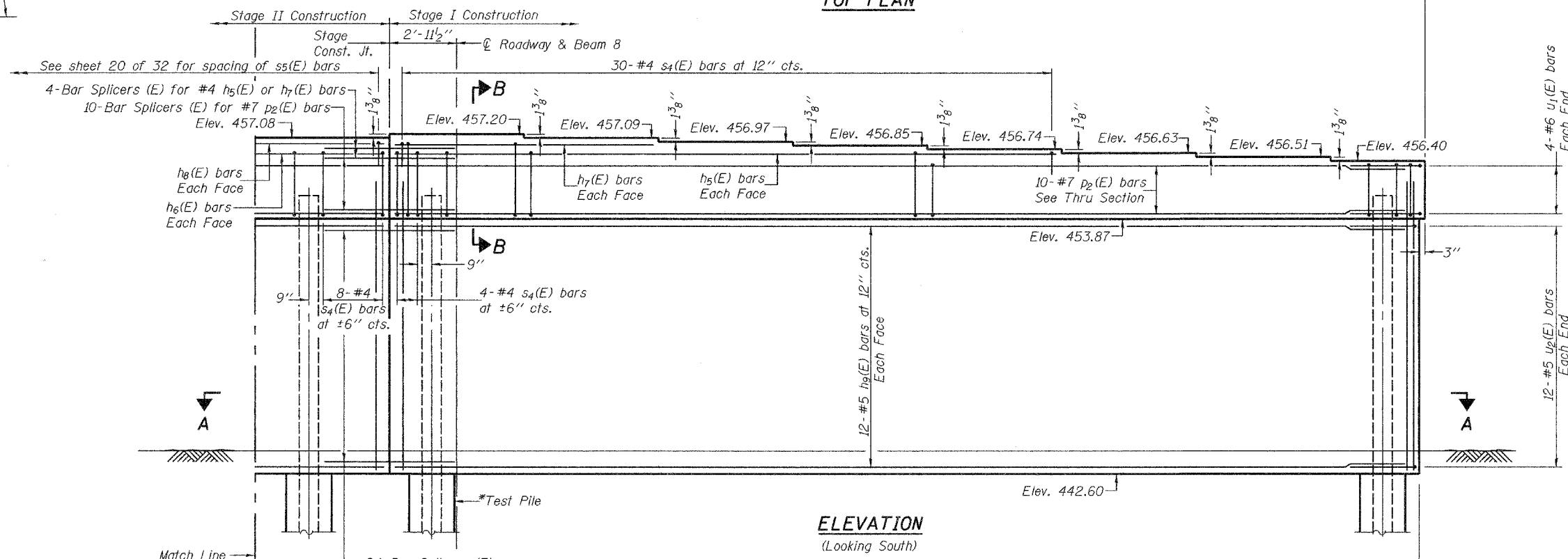
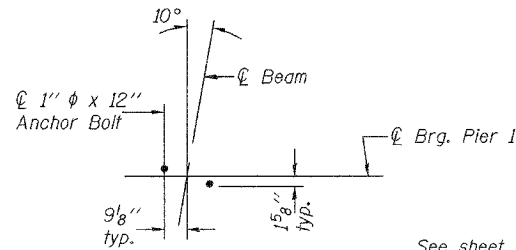
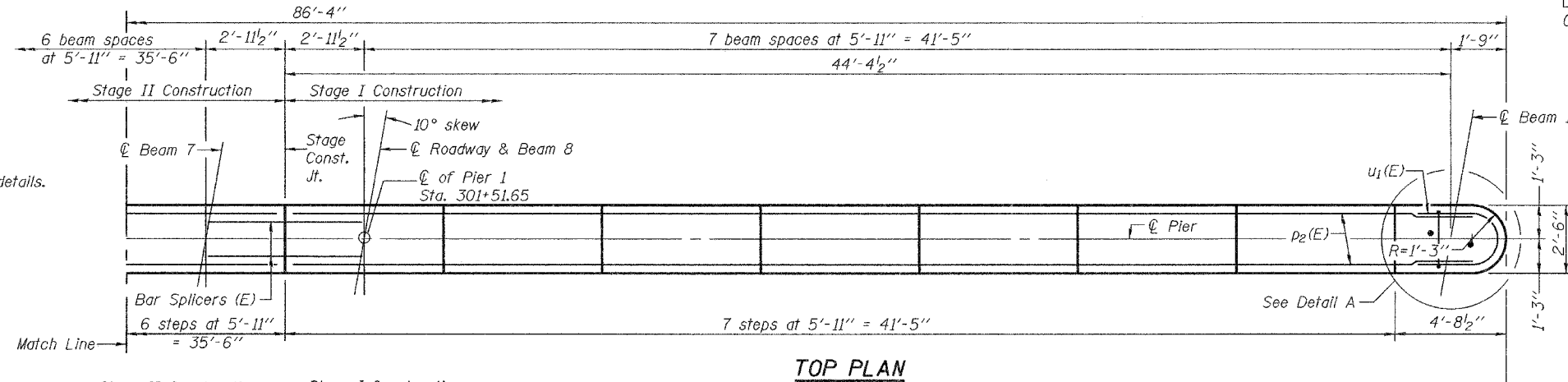
STATE OF ILLINOIS  
DEPARTMENT OF TRANSPORTATION

ROUTE NO.	SECTION	COUNTY	TOTAL SHEETS	SHEET NO.
F.A.P. 669	IIBR-1	TAZEWELL	442	290
FED. ROAD DIST. NO. 7		ILLINOIS	FED. AID PROJECT-	

SHEET NO. 21  
32 SHEETS

Contract #88804

Notes:  
Space reinforcement in cap to miss anchor bolts.  
Pour steps monolithically with cap.  
See sheet 20 of 32 for Bill of Material and Section B-B.  
For bar splicer details see sheet 25 of 32.  
For anchor bolt installation details see sheet 15 of 32.  
See sheet 24 of 32 for pile details.  
See sheet 22 of 32 for s4(E), s5(E), u1(E) and u2(E) bar details.



DESIGNED	T.L.K.
CHECKED	A.M.J.
DRAWN	BECKY M. LEACH
CHECKED	A.M.J. & P.E.C.

EXAMINED *Thomas J. Damagala*  
ENGINEER OF BRIDGE DESIGN  
PASSED *Ralph E. Anderson*  
ENGINEER OF BRIDGES AND STRUCTURES

May 10, 2006

**PIER 1**  
F.A.P. ROUTE 669 - SECTION IIBR-1  
TAZEWELL COUNTY  
STATION 301+87.90  
STRUCTURE NO. 090-0172