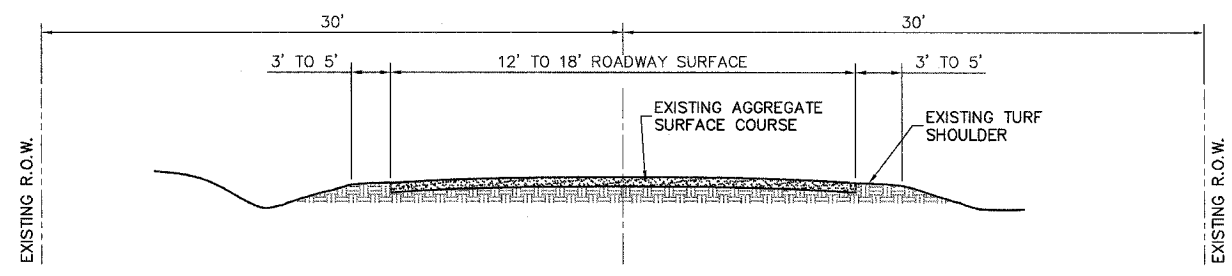
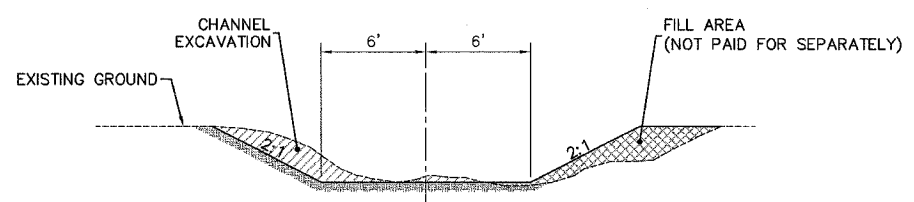


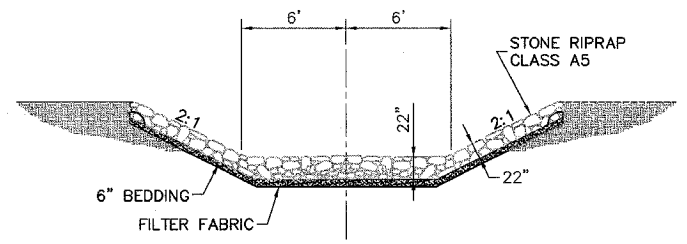
| ROUTE NO.        | SECTION | COUNTY | TOTAL SHEETS  | SHEET NO. |
|------------------|---------|--------|---------------|-----------|
| 132              | *       | MERCER | 23            | 2         |
| ILLINOIS         |         |        | BR-05-131(44) |           |
| * 97-06118-00-BR |         |        | 89250         |           |



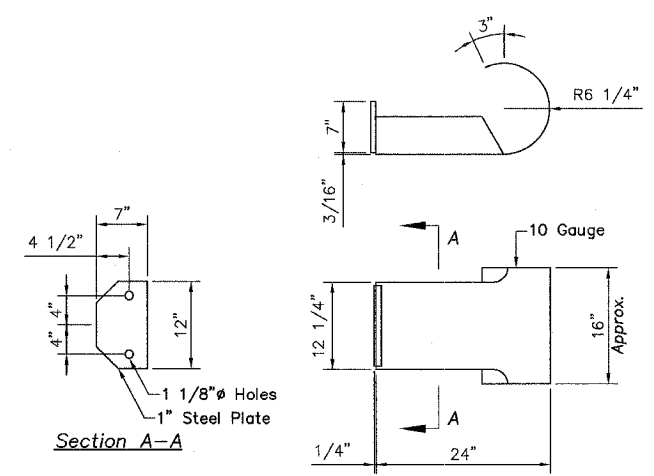
EXISTING TYPICAL ROADWAY SECTION



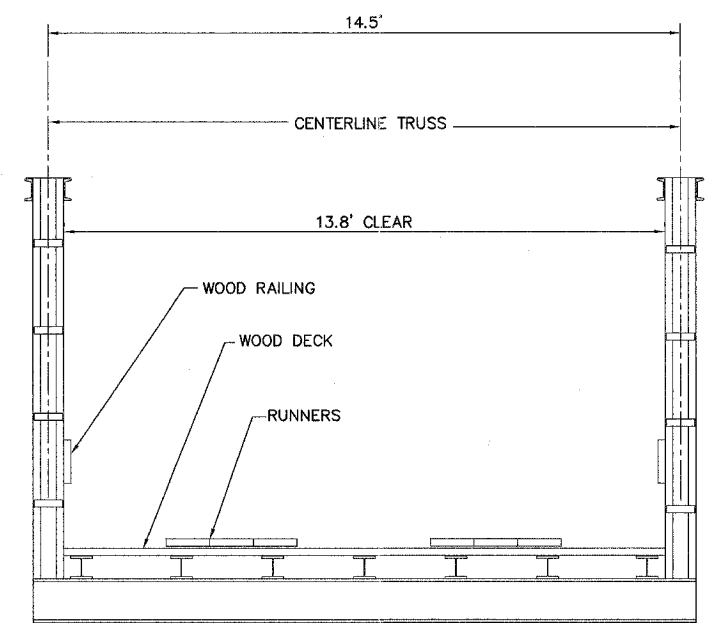
TYPICAL OVERFLOW CHANNEL SECTION (WITHOUT RIPRAP)



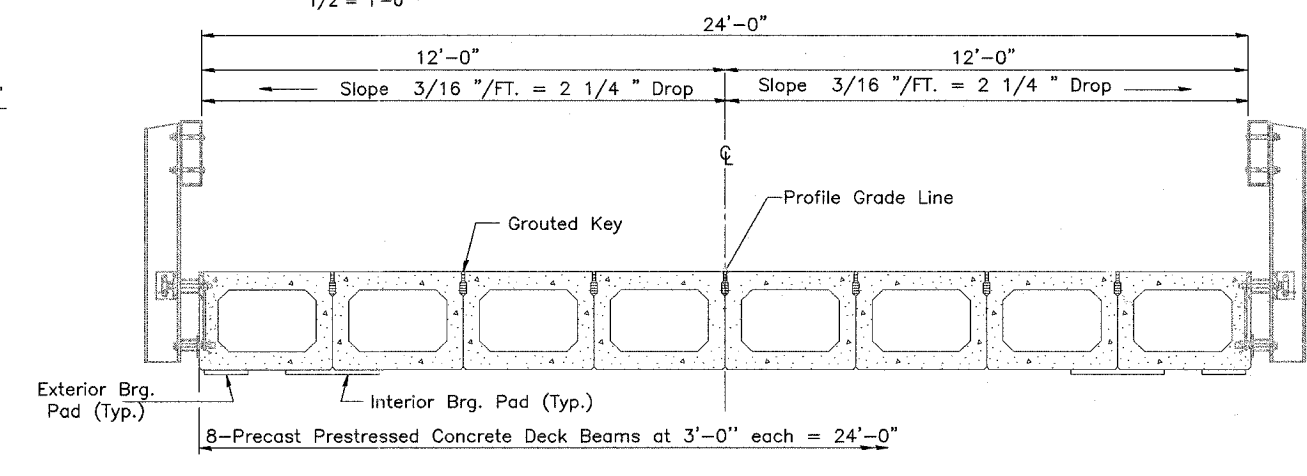
TYPICAL OVERFLOW CHANNEL SECTION



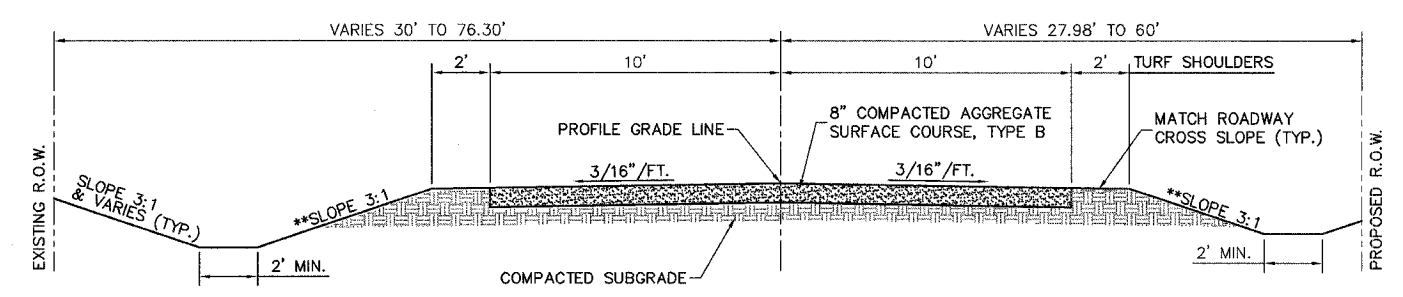
CURLLED END SECTION (INCLUDED IN STEEL BRIDGE RAILING)



EXISTING BRIDGE SECTION  
1/2" = 1'-0"

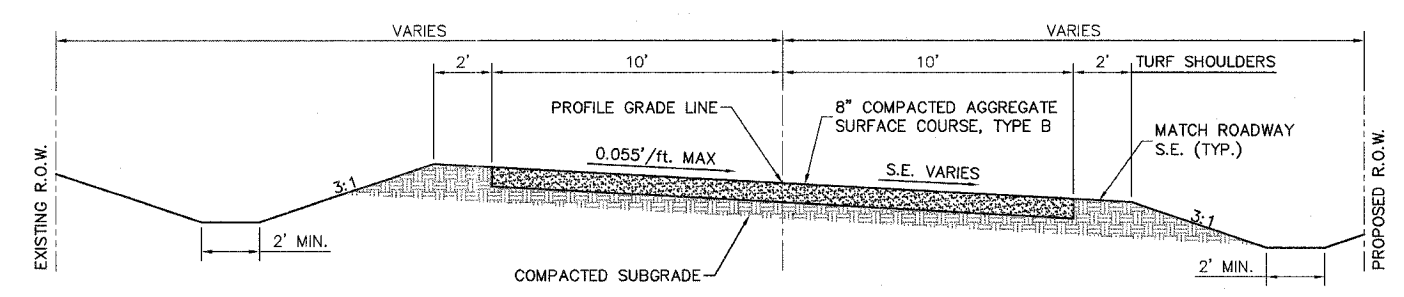


PROPOSED BRIDGE SECTION  
1/2" = 1'-0"



PROPOSED TYPICAL ROADWAY SECTION

STA. 3+25 TO STA. 7+00  
STA. 8+48 TO STA. 15+75



PROPOSED SUPERELEVATED ROADWAY SECTION

STA. 3+53 TO STA. 5+47  
STA. 13+21 TO STA. 15+75

- \*\*NOTE:**
- EMBANKMENT SLOPES SHALL TRANSITION FROM 3:1 TO 2:1 BETWEEN STA. 6+00 TO 7+00 AND TRANSITION FROM 2:1 TO 3:1 BETWEEN 8+48 TO 9+48 TRANSITION AS REQUIRED OVER CULVERT ENDS (7:1 SLOPES)
  - TRANSITION THE PROPOSED ROADWAY FROM, AND INTO, THE EXISTING ROADWAY:  
STA. 3+25 TO 4+25  
STA. 14+75 TO 15+75

TYPICAL SECTIONS AND DETAILS  
SECTION 97-06118-00-BR  
T.R. 132, STA. 7+74.00  
MERCER COUNTY