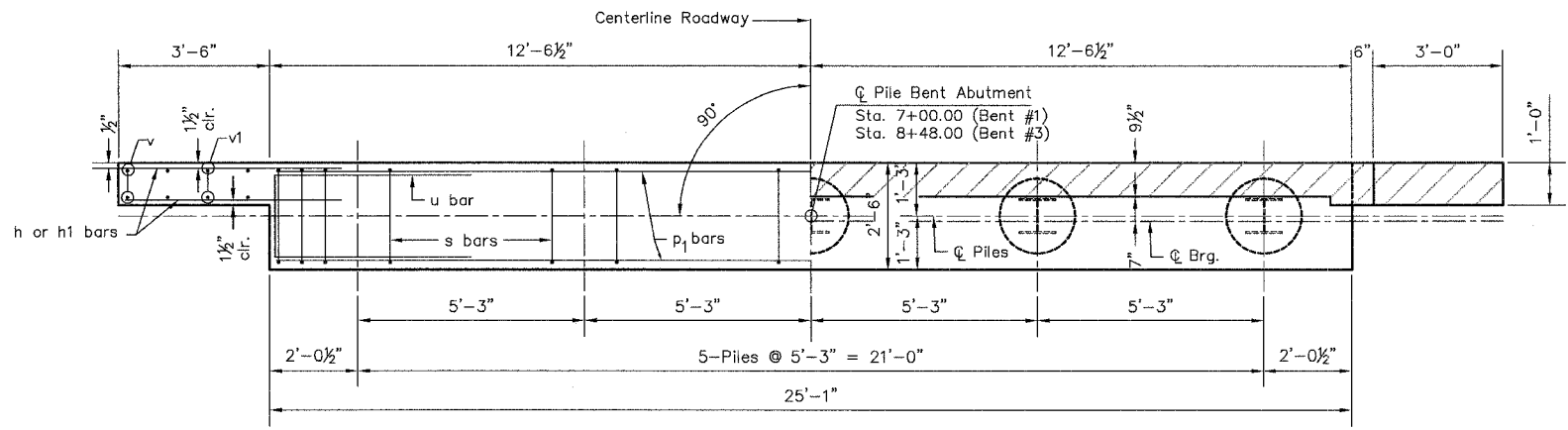
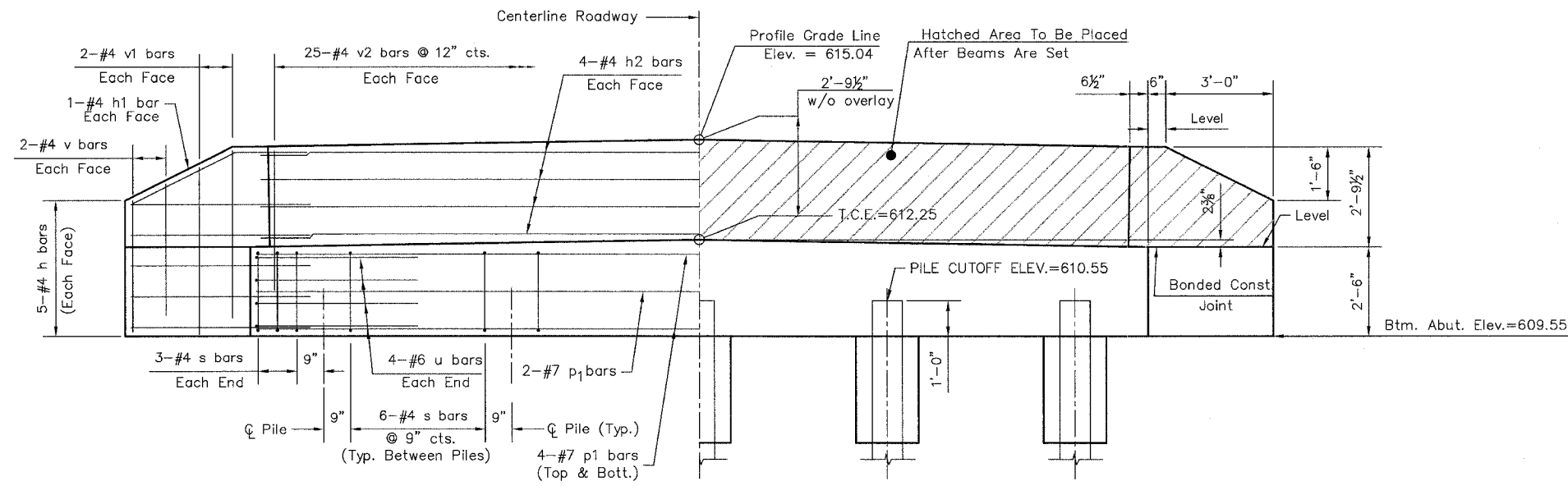


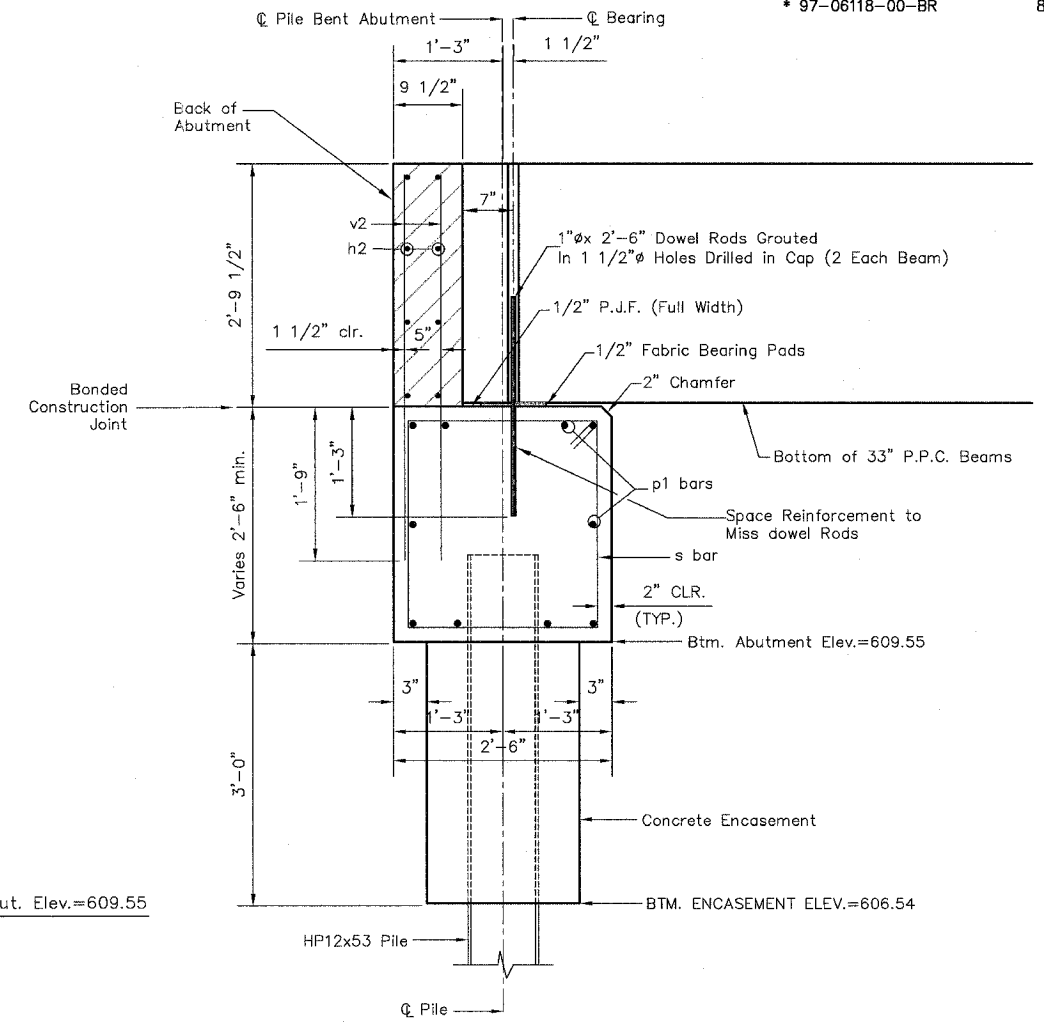
ROUTE NO.	SECTION	COUNTY	TOTAL SHEETS	SHEET NO.
132	*	MERCER	23	16
			ILLINOIS	BR-OS-131(44)
			* 97-06118-00-BR	89250



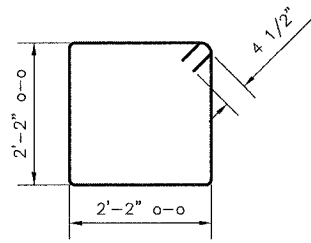
PLAN VIEW



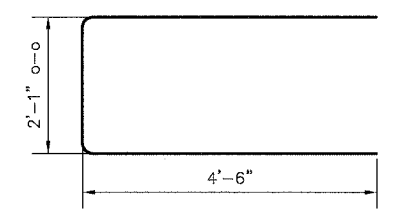
ELEVATION VIEW



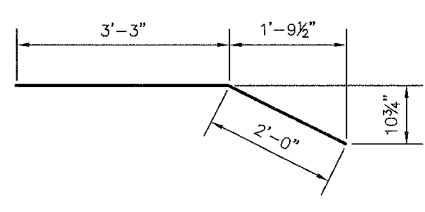
SECTION THRU ABUTMENT



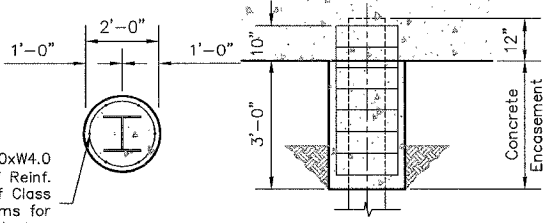
BAR s



BAR u



BAR h1



PILE ENCASEMENT DETAIL

Welded Wire Fabric 6x6-W4.0xW4.0 Weighing 58#/100 sf. The cost of Reinf. is incidental to the cost of Class S1 Concrete Encasement. Forms for Encasement may be omitted when soil conditions will permit.

BILL OF MATERIAL FOR TWO ABUTMENTS

BAR	NO.	SIZE	LENGTH	SHAPE
h	40	#4	5'-0"	—
h1	8	#4	5'-3"	—
h2	16	#4	24'-9"	—
p1	20	#7	24'-9"	—
s	60	#4	9'-5"	□
u	16	#6	11'-1"	—
v	16	#4	3'-8"	—
v1	16	#4	4'-8"	—
v2	100	#4	4'-7"	—
Structure Excavation			Cu. Yds.	6.2
Concrete Structures			Cu. Yds.	18.6
Reinforcement Bars			Lbs.	2,480
Furnish Steel Piles - HP12x53			Feet	260
Driving Steel Piles			Feet	260
Steel Test Pile - HP12x53			Each	2
Concrete Encasement			Cu. Yds.	3.4

PILE DATA

Type	Steel HP 12x53
Capacity	Refusal
Estimated Length	35 Feet (Bent #1) 30 Feet (Bent #3)
Quantity	4+1 Test Pile (Bent #1) 4+1 Test Pile (Bent #3)

GENERAL NOTES:

- The Backwall and the portion of the Wingwalls above the bonded construction joint shall be cast against the in-place beams.
- Reinforcement bars shall conform to A706, Grade 60
- All edges shall have standard 3/4" chamfers unless noted otherwise.
- Space reinforcement in cap to miss anchor bolts.

DESIGN STRESSES

f'c = 3,500 psi
fy = 60,000 psi

ABUTMENT DETAILS

SECTION 97-06118-00-BR
T.R. 132, STA. 7+74.00
MERCER COUNTY
S.N. 066-4817