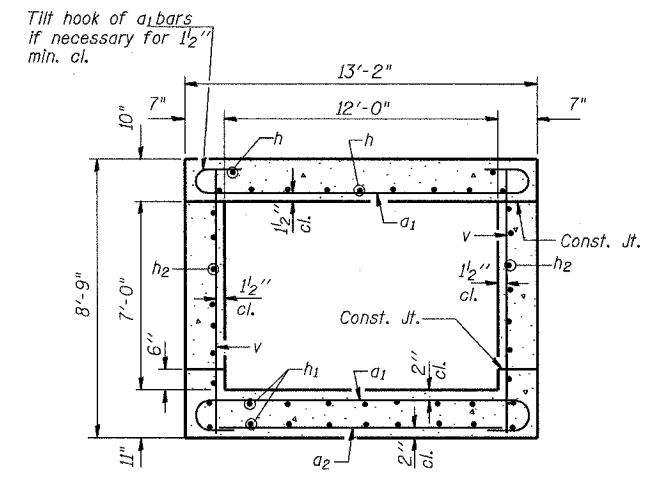
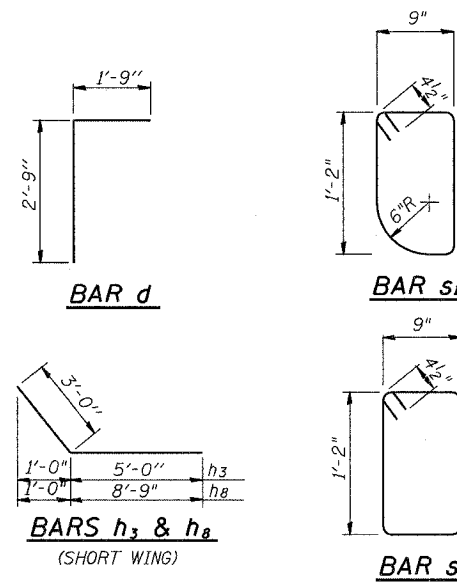
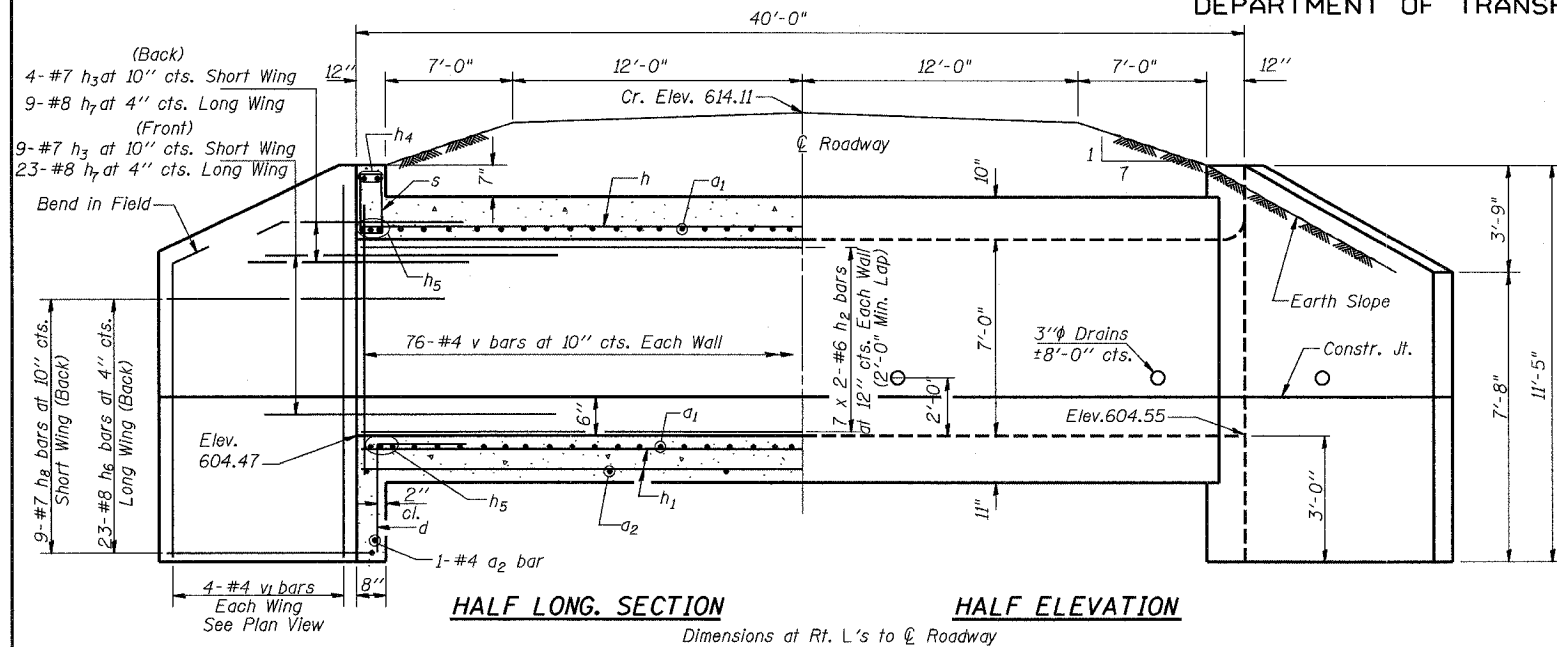


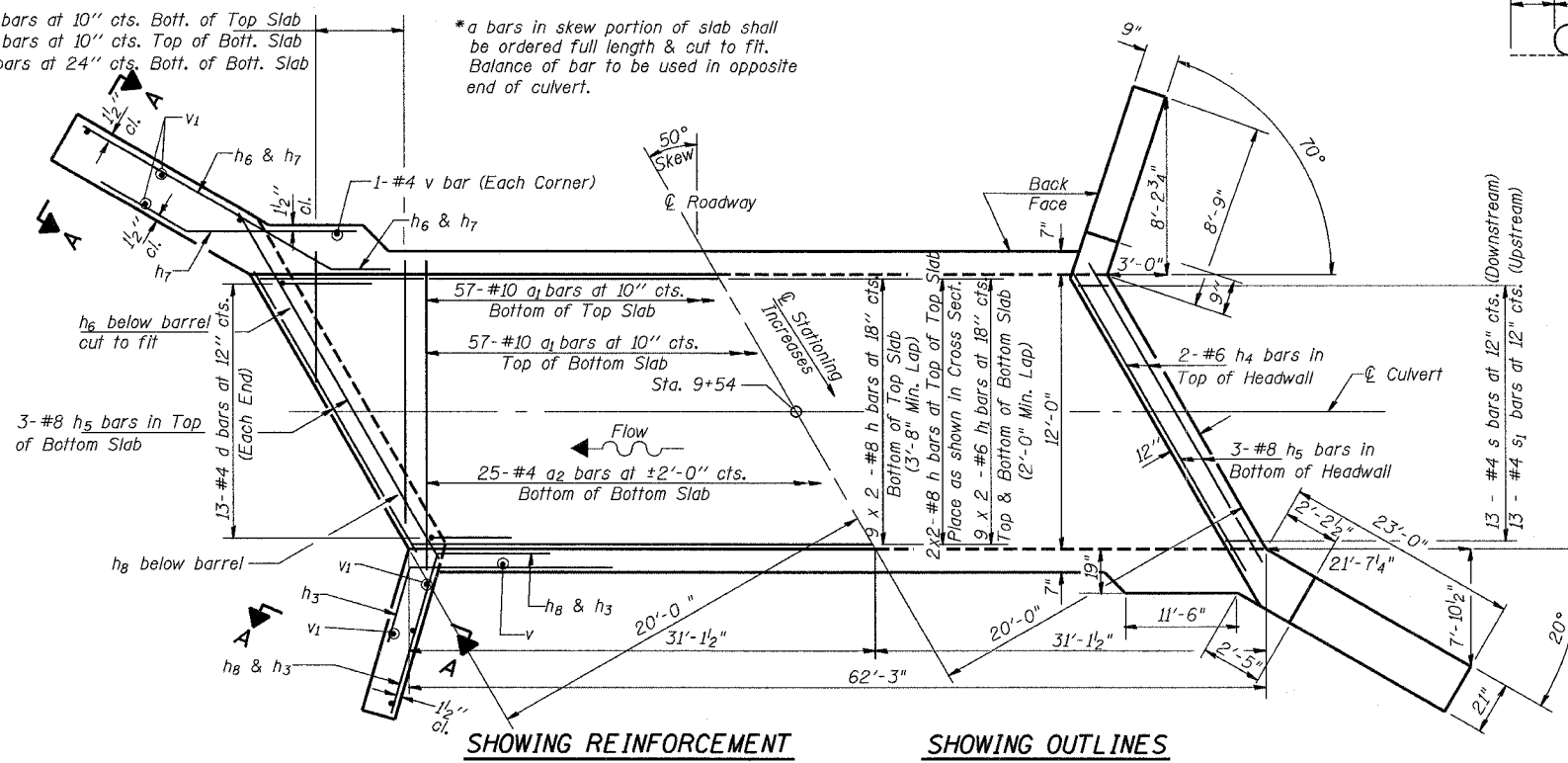
STATE OF ILLINOIS  
DEPARTMENT OF TRANSPORTATION

ROUTE NO.	SECTION	COUNTY	SHEET	SHEET
TR 132	*	MERCER	23	19
FED. ROAD DIST. NO. 7	ILLINOIS	BR-05-131(44)		
*97-06118-00-BR			89250	



SECTION THRU BARREL

- \*15-#10 a1 bars at 10" cts. Bott. of Top Slab
- \*15-#10 a1 bars at 10" cts. Top of Bott. Slab
- \*6-#4 a2 bars at 24" cts. Bott. of Bott. Slab
- \*a bars in skew portion of slab shall be ordered full length & cut to fit. Balance of bar to be used in opposite end of culvert.



SHOWING REINFORCEMENT  
SHOWING OUTLINES  
PLAN

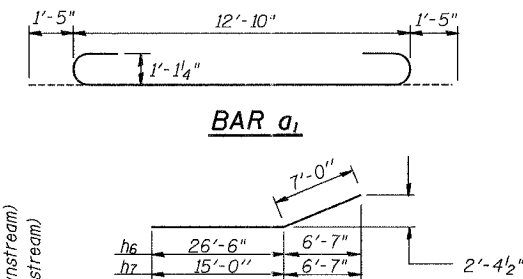
NOTES

A distance of half the length of the wingwall but not less than six feet of the Barrel shall be poured monolithically with the wingwalls. Exposed edges shall be beveled 3/4". Reinforcement Bars shall conform to the requirements of A706, Grade 60. Bars indicated thus 12 x 4-#5 etc. indicates 12 lines of bars with 4 lengths per line.

DESIGNED	JBF
CHECKED	JBF
DRAWN	RAP
CHECKED	JBF

NAME PLATE

OVERFLOW CHANNEL  
BUILT 20\_\_ BY  
MERCER ROAD DISTRICT  
MERCER COUNTY  
SEC. 97-06118-00-BR  
STATION 9+54  
LOADING HS20



SECTION THRU HEADWALL  
(Up Stream End Only)

DESIGN STRESSES

fy = 60,000 psi  
f'c = 3,500 psi

LOADING HS 20-44

BILL OF MATERIAL

Bar	No.	Size	Length	Shape
a1	144	#10	15'-8"	U
a2	33	#4	12'-3"	—
d	26	#4	4'-6"	L
h	22	#8	33'-0"	—
h1	36	#6	32'-0"	—
h2	28	#6	32'-0"	—
h3	26	#7	8'-0"	—
h4	4	#6	21'-3"	—
h5	12	#8	22'-6"	—
h6	46	#8	33'-6"	—
h7	64	#8	22'-0"	—
h8	18	#7	11'-9"	—
v	156	#4	8'-5"	—
v1	16	#4	11'-1"	—
s	13	#4	4'-7"	U
s1	13	#4	4'-7"	U
Concrete Box Culverts	Cu. Yd.	115.5		
Reinforcement Bars	Pound	25,730		
Stone Dumped Riprap Class A5	Sq. Yd.	130		
Filter Fabric	Sq. Yd.	130		
Removal of Existing Structures No. 2	Each	1		
Name Plates	Each	1		

12'-0" x 7'-0" R.C. BOX CULVERT

T.R. 132  
ON NO NAME OVERFLOW CHANNEL

SECTION 97-06118-00-BR  
MERCER COUNTY  
STATION 9+54