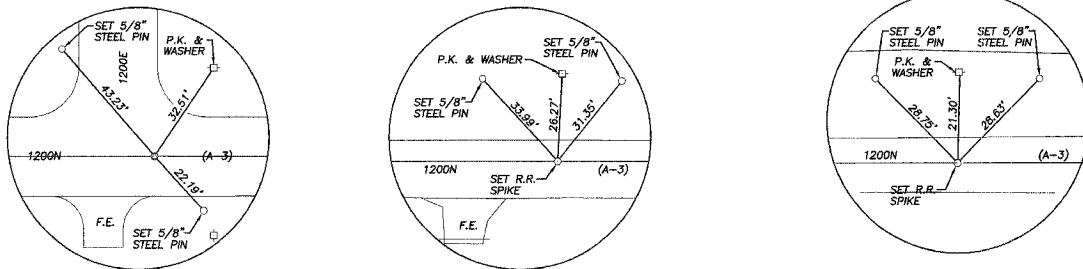


ROUTE NO.	SECTION	COUNTY	TOTAL SHEETS	SHEET NO.
17	3	WOODFORD	17	3

**BENCHMARK INFORMATION**

B.M. "A" - SET RAILROAD SPIKE IN SECOND POWER POLE WEST OF BRIDGE ON NORTH SIDE OF ROAD. ELEV = 722.75  
 B.M. "B" - CHISELED "□" ON TOP OUTSIDE CORNER OF S.W. WINGWALL OF EXISTING STRUCTURE. ELEV = 721.45  
 B.M. "C" - SET RAILROAD SPIKE IN FIRST POWER POLE EAST OF BRIDGE ON NORTH SIDE OF ROAD. ELEV = 720.93



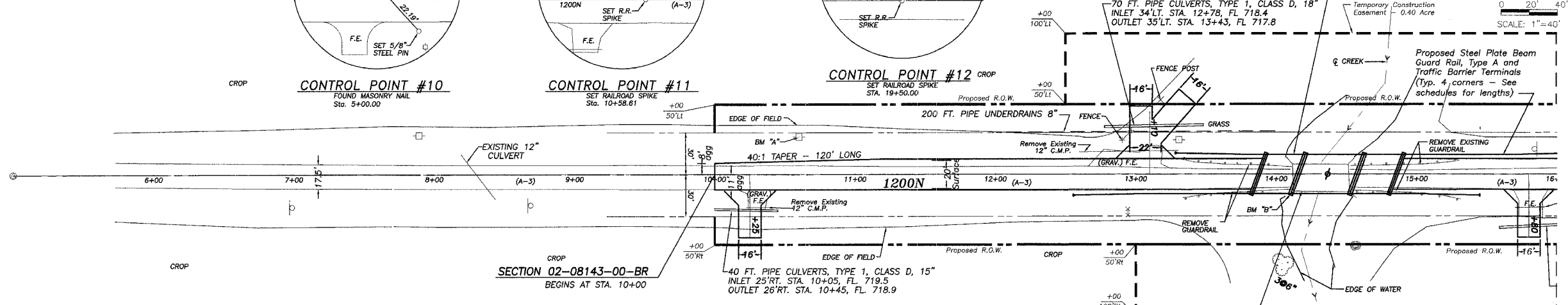
**CONTROL POINT #10**  
FOUND MASONRY NAIL  
Sta. 5+00.00

**CONTROL POINT #11**  
SET RAILROAD SPIKE  
Sta. 10+58.61

**CONTROL POINT #12**  
SET RAILROAD SPIKE  
Sta. 19+50.00

**PROPOSED STRUCTURE (SN 102-3203)**

INCLUDES A THREE SPAN PRECAST PRESTRESSED DECK BEAM BRIDGE ON PILE BENT ABUTMENTS AND PIERS. 20' SKEW LT. AHEAD 100'-8" BK.-BK. ABUTS.



**UTILITIES**

TELEPHONE: VERIZON 1-309-663-3140  
 CABLE: MEDIACOM 1-800-874-2991

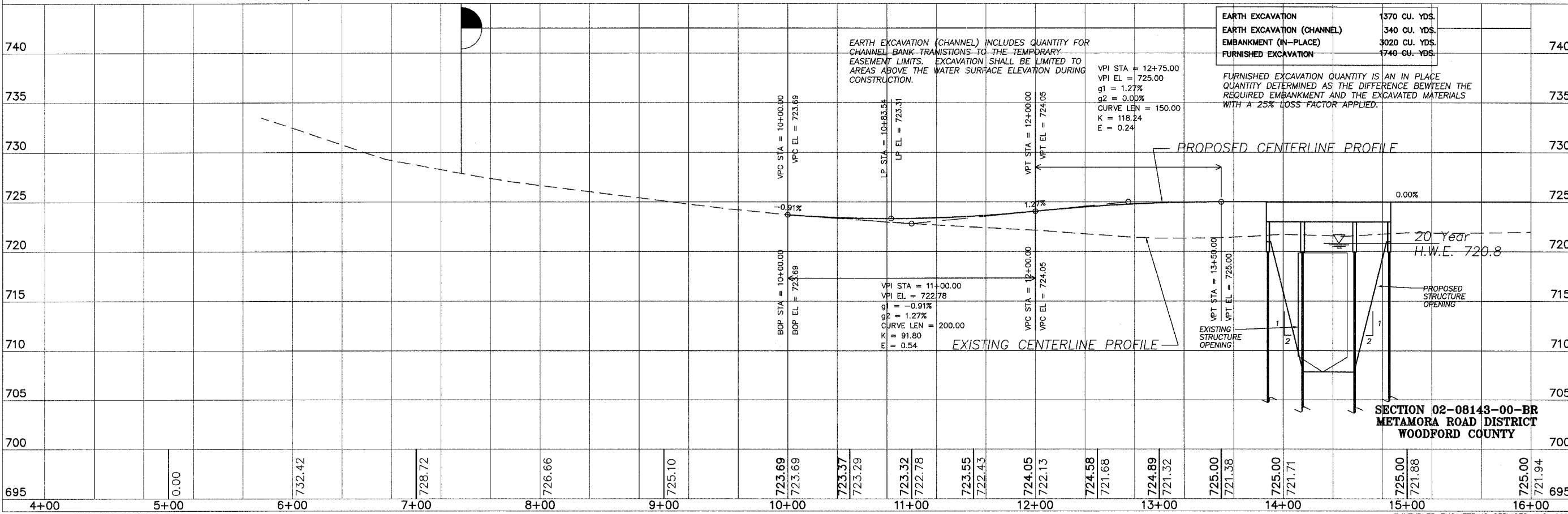
POWER: AMEREN CILCO  
 300 LIBERTY ST.  
 PEORIA, IL  
 1-888-672-5252

THE LOCATIONS OF UTILITY FACILITIES AS SHOWN ON THESE PLANS ARE AN ESTIMATE AND NOT INTENDED AS FIELD LOCATIONS FOR CONSTRUCTION. THE CONTRACTOR IS RESPONSIBLE FOR CONTACTING ALL UTILITIES PRIOR TO CONSTRUCTION AND CALLING J.U.L.I.E. AT 800-892-0123 FOR CONFIRMATION OF EXISTING UTILITY LOCATIONS.

**NOTES**

ALL STUMP, TREE REMOVAL (< 6IN DIA.), CULVERTS AND BRUSH REMOVAL ARE CONSIDERED INCIDENTAL TO EARTH EXCAVATION.  
 ALL FENCES DISTURBED BY CONSTRUCTION ACTIVITIES SHALL BE RELOCATED AND RESTORED BY THE CONTRACTOR AS DIRECTED BY THE ENGINEER.  
 (SEE SPECIAL PROVISIONS - COST CONSIDERED INCLUDED WITH PRICE BID FOR EARTH EXCAVATION)

SCALES:  
 1" = 40' HOR  
 1" = 5' VER



EARTH EXCAVATION	1370 CU. YDS.
EARTH EXCAVATION (CHANNEL)	340 CU. YDS.
EMBANKMENT (IN-PLACE)	3020 CU. YDS.
FURNISHED EXCAVATION	1740 CU. YDS.

FURNISHED EXCAVATION QUANTITY IS IN PLACE QUANTITY DETERMINED AS THE DIFFERENCE BETWEEN THE REQUIRED EMBANKMENT AND THE EXCAVATED MATERIALS WITH A 25% LOSS FACTOR APPLIED.

**SECTION 02-08143-00-BR**  
**METAMORA ROAD DISTRICT**  
**WOODFORD COUNTY**

**WENDLER ENGINEERING SERVICES, INC.**  
 Structural & Civil Engineers-Land Surveying-Environmental Services  
 Illinois Professional Design Firm No. 184-000848



1968 - 2008  
 AFTER  
**37**  
 YEARS,  
 WE'RE STILL  
 "Turning Ideas... Into Reality!"