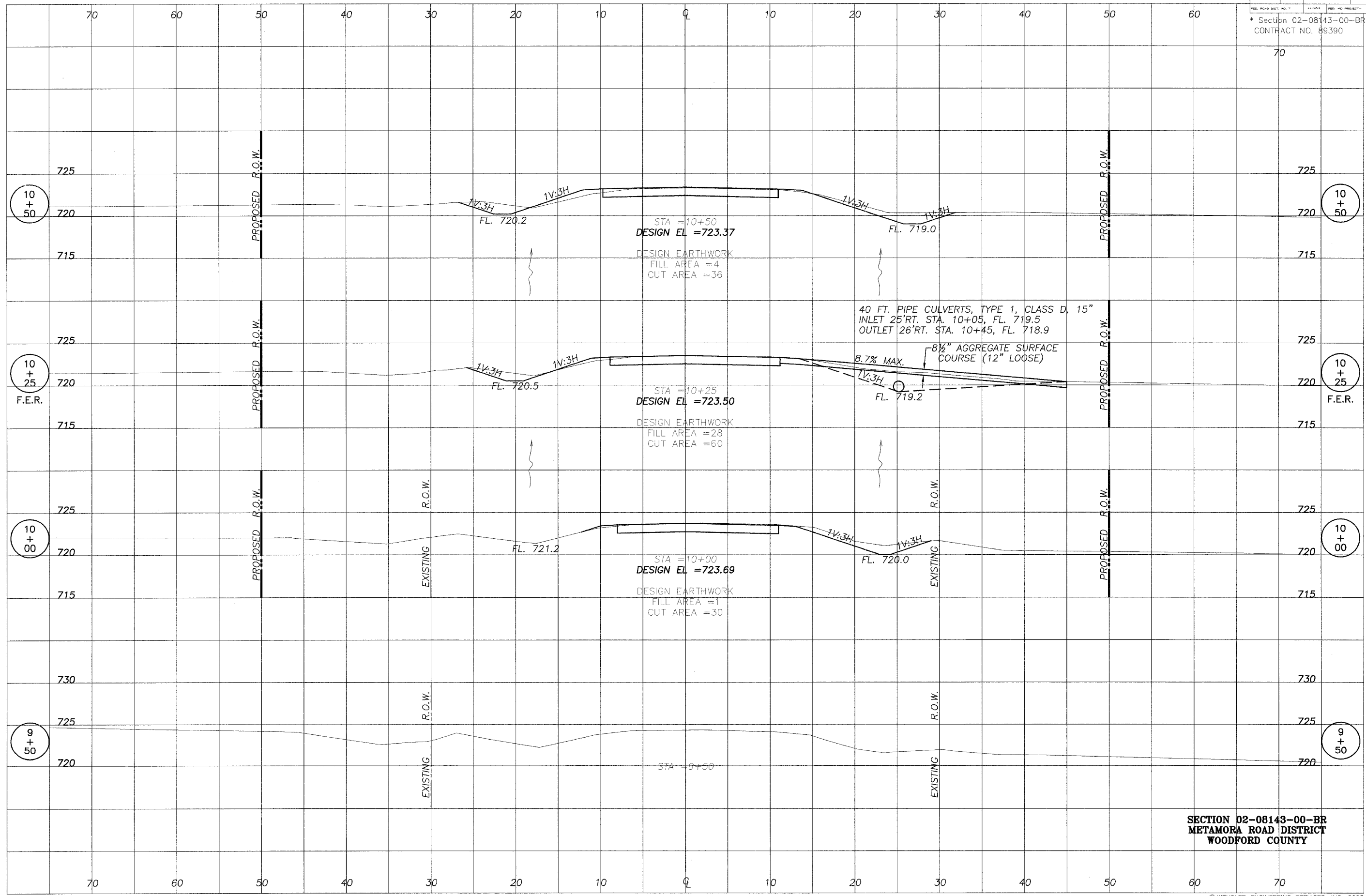


ROUTE NO.	SECTION	COUNTY	SHEET NO.	TOTAL SHEETS
*	WOODFORD	17	5	

\* Section 02-08143-00-BR  
CONTRACT NO. 89390

ISSUING DATE  
04/17/06



698 TIMBER CREEK ROAD - P.O. BOX 466 - DIXON, IL 61021 - 815-286-2261  
28 E. MARION - SUITE 3 - PRINCETON, IL 61356 - 815-879-4731  
1778 WEST STATE ST. - STAMFORD, IL 60178 - 815-885-5008  
804 FREEMONT RD. - STERLING, IL 61081 - (615) 626-4428  
E-MAIL: info@wendler.com

**WENDLER ENGINEERING SERVICES, INC.**  
Structural & Civil Engineers-Land Surveying-Environmental Services  
Illinois Professional Design Firm No. 184-000848



1968 - 2005  
AFTER  
**37**  
YEARS,  
WE'RE STILL  
"Turning Ideas  
...Into Reality!"

**SECTION 02-08143-00-BR  
METAMORA ROAD DISTRICT  
WOODFORD COUNTY**