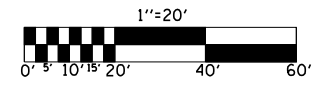
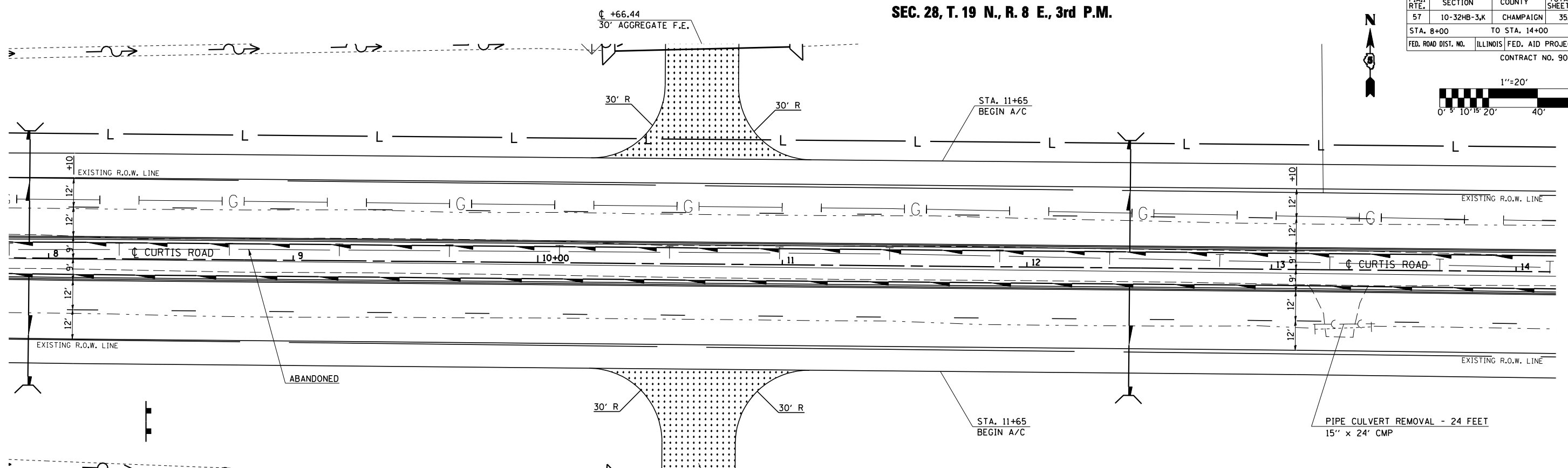


SEC. 28, T. 19 N., R. 8 E., 3rd P.M.

F.A.I. RTE.	SECTION	COUNTY	TOTAL SHEETS	SHEET NO.
57	10-32HB-3,K	CHAMPAIGN	352	44
STA. 8+00		TO STA. 14+00		
FED. ROAD DIST. NO.	ILLINOIS	FED. AID PROJECT		
CONTRACT NO. 90758				



PLAN	SURVEYED	DATE
	PLOTTED	
	CHECKED	
	BY	
	NO. OF WAY CHECKED	
	CADD FILE NAME	



SEE SIGNING PLANS FOR DETAILS

SEE LIGHTING PLANS FOR DETAILS

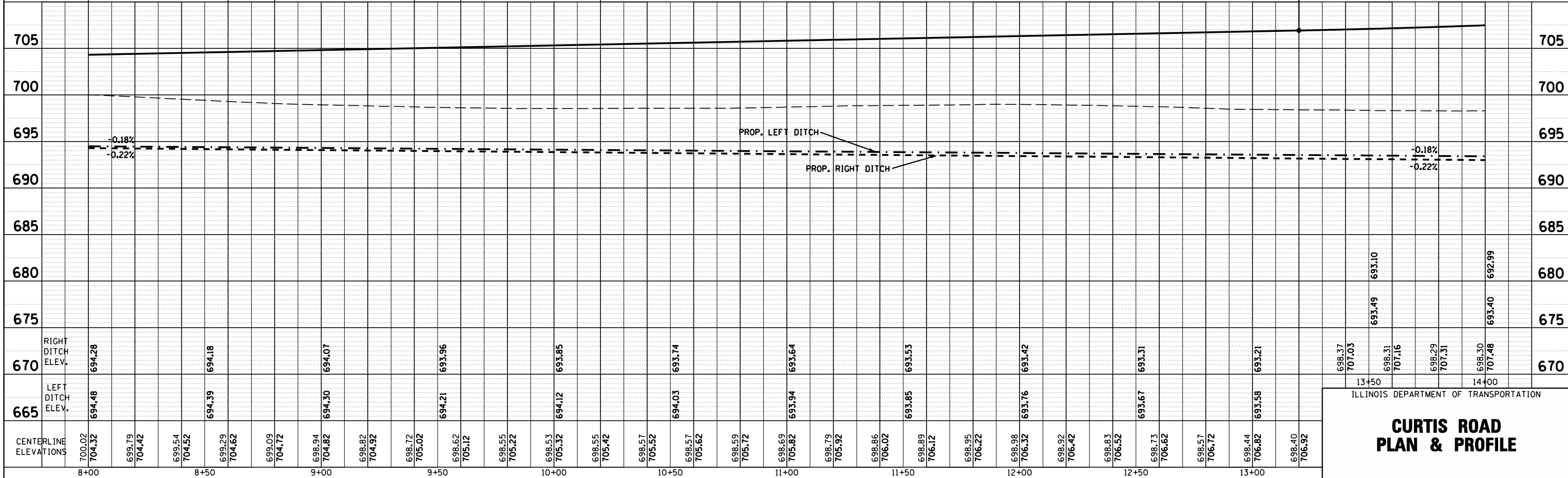
SEE GAS PIPELINE PLANS FOR DETAILS

SEC. 33, T. 19 N., R. 8 E., 3rd P.M.

AGGREGATE SURFACE COURSE, TYPE B 6"

200.00' V.C.

PROFILE	SURVEYED	DATE
	PLOTTED	
	CHECKED	
	BY	
	NO. OF WAY CHECKED	
	STRUCTURE NOTATIONS CHKD	



RIGHT DITCH ELEV.	694.28	694.18	694.07	693.96	693.85	693.74	693.64	693.53	693.42	693.31	693.21	693.10	692.99
LEFT DITCH ELEV.	694.48	694.39	694.30	694.21	694.12	694.03	693.94	693.85	693.76	693.67	693.58	693.49	693.40
CENTERLINE ELEVATIONS	700.02	699.79	699.54	699.29	699.09	698.82	698.57	698.31	698.06	697.81	697.56	697.31	697.06

ILLINOIS DEPARTMENT OF TRANSPORTATION
**CURTIS ROAD
PLAN & PROFILE**