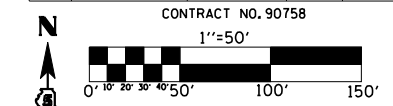


F.A.I. RTE.	SECTION	COUNTY	TOTAL SHEETS	SHEET NO.
57	10-32HB-3,K	CHAMPAIGN	352	52



CONCRETE HEADWALL FOR PIPE DRAINS ()
 STA. 3+42 RT.
 STA. 4+79 LT.
 STA. 7+92 RT.
 STA. 12+42 RT.
 STA. 16+92 RT.

TEMPORARY DITCH CHECKS ()
 STA. 39+50 LT.
 STA. 39+50 RT.
 STA. 0+75 LT.
 STA. 0+85 RT.
 STA. 2+10 LT.
 STA. 4+55 RT.
 STA. 13+50 LT.
 STA. 13+70 RT.

INLET & PIPE PROTECTION ()
 CURTIS
 STA. 10+31, 90' LT
 STA. 10+34, 91' RT.
 STA. 20+17, 126' RT.
 STALEY
 STA. 245+92, 41' LT
 STA. 247+96, 33' LT.

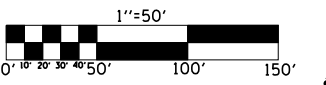
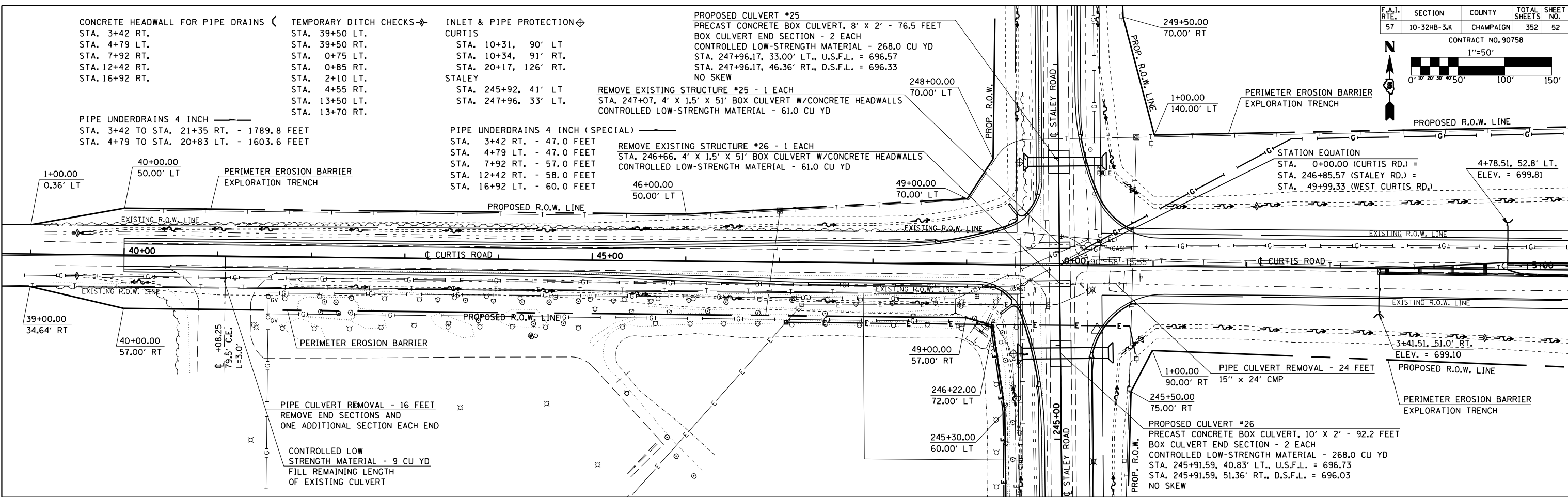
PROPOSED CULVERT #25
 PRECAST CONCRETE BOX CULVERT, 8' X 2' - 76.5 FEET
 BOX CULVERT END SECTION - 2 EACH
 CONTROLLED LOW-STRENGTH MATERIAL - 268.0 CU YD
 STA. 247+96.17, 33.00' LT., U.S.F.L. = 696.57
 STA. 247+96.17, 46.36' RT., D.S.F.L. = 696.33
 NO SKEW

REMOVE EXISTING STRUCTURE #25 - 1 EACH
 STA. 247+07, 4' X 1.5' X 51' BOX CULVERT W/CONCRETE HEADWALLS
 CONTROLLED LOW-STRENGTH MATERIAL - 61.0 CU YD

REMOVE EXISTING STRUCTURE #26 - 1 EACH
 STA. 246+66, 4' X 1.5' X 51' BOX CULVERT W/CONCRETE HEADWALLS
 CONTROLLED LOW-STRENGTH MATERIAL - 61.0 CU YD

PIPE UNDERDRAINS 4 INCH (SPECIAL) _____
 STA. 3+42 RT. - 47.0 FEET
 STA. 4+79 LT. - 47.0 FEET
 STA. 7+92 RT. - 57.0 FEET
 STA. 12+42 RT. - 58.0 FEET
 STA. 16+92 LT. - 60.0 FEET

PIPE UNDERDRAINS 4 INCH _____
 STA. 3+42 TO STA. 21+35 RT. - 1789.8 FEET
 STA. 4+79 TO STA. 20+83 LT. - 1603.6 FEET

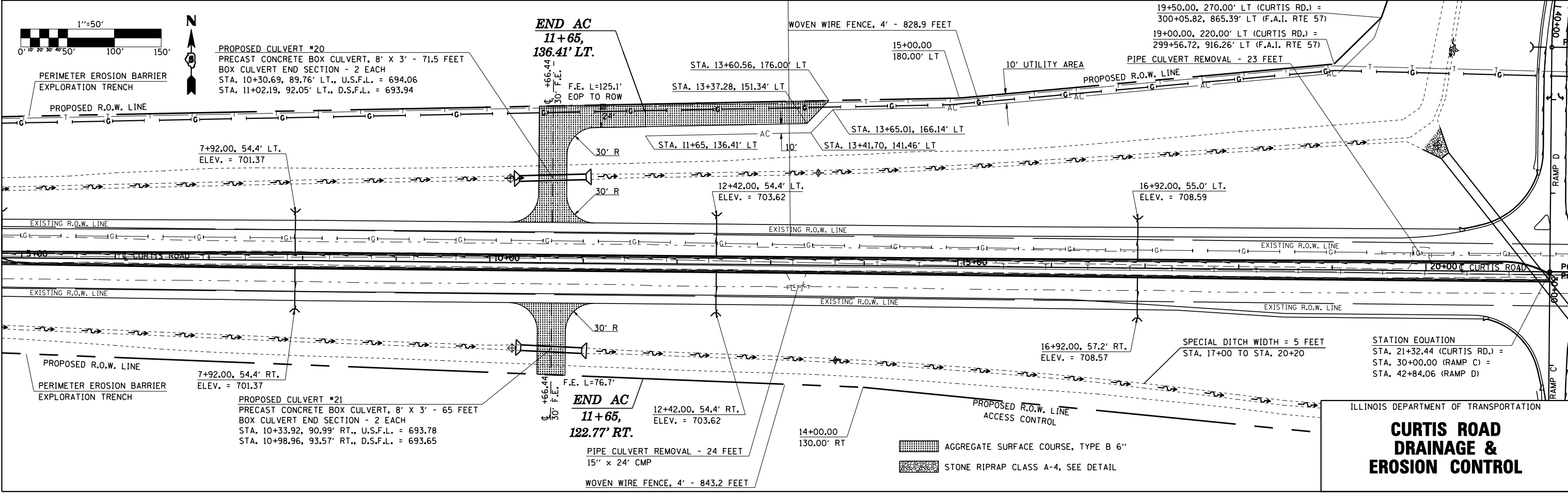


PROPOSED CULVERT #20
 PRECAST CONCRETE BOX CULVERT, 8' X 3' - 71.5 FEET
 BOX CULVERT END SECTION - 2 EACH
 STA. 10+30.69, 89.76' LT., U.S.F.L. = 694.06
 STA. 11+02.19, 92.05' LT., D.S.F.L. = 693.94

END AC
11+65,
136.41' LT.

STA. 13+60.56, 176.00' LT
 STA. 13+37.28, 151.34' LT
 STA. 11+65, 136.41' LT
 STA. 13+65.01, 166.14' LT
 STA. 13+41.70, 141.46' LT

19+50.00, 270.00' LT (CURTIS RD.) =
 300+05.82, 865.39' LT (F.A.I. RTE 57)
 19+00.00, 220.00' LT (CURTIS RD.) =
 299+56.72, 916.26' LT (F.A.I. RTE 57)



7+92.00, 54.4' LT.
 ELEV. = 701.37

12+42.00, 54.4' LT.
 ELEV. = 703.62

16+92.00, 55.0' LT.
 ELEV. = 708.59

7+92.00, 54.4' RT.
 ELEV. = 701.37

12+42.00, 54.4' RT.
 ELEV. = 703.62

16+92.00, 57.2' RT.
 ELEV. = 708.57

STATION EQUATION
 STA. 21+32.44 (CURTIS RD.) =
 STA. 30+00.00 (RAMP C) =
 STA. 42+84.06 (RAMP D)

PROPOSED CULVERT #21
 PRECAST CONCRETE BOX CULVERT, 8' X 3' - 65 FEET
 BOX CULVERT END SECTION - 2 EACH
 STA. 10+33.92, 90.99' RT., U.S.F.L. = 693.78
 STA. 10+98.96, 93.57' RT., D.S.F.L. = 693.65

END AC
11+65,
122.77' RT.

PIPE CULVERT REMOVAL - 24 FEET
 15" X 24" CMP
 WOVEN WIRE FENCE, 4' - 843.2 FEET

AGGREGATE SURFACE COURSE, TYPE B 6"
 STONE RIPRAP CLASS A-4, SEE DETAIL

ILLINOIS DEPARTMENT OF TRANSPORTATION
**CURTIS ROAD
 DRAINAGE &
 EROSION CONTROL**