

F.A.I. RTE.	SECTION	COUNTY	TOTAL SHEETS	SHEET NO.
57	10-32HB-3,K	CHAMPAIGN	352	56
STA. 247+00		TO STA. 253+00		
FED. ROAD DIST. NO.		ILLINOIS FED. AID PROJECT		
253+00.00		CONTRACT NO. 90758		
60.00' LT.				

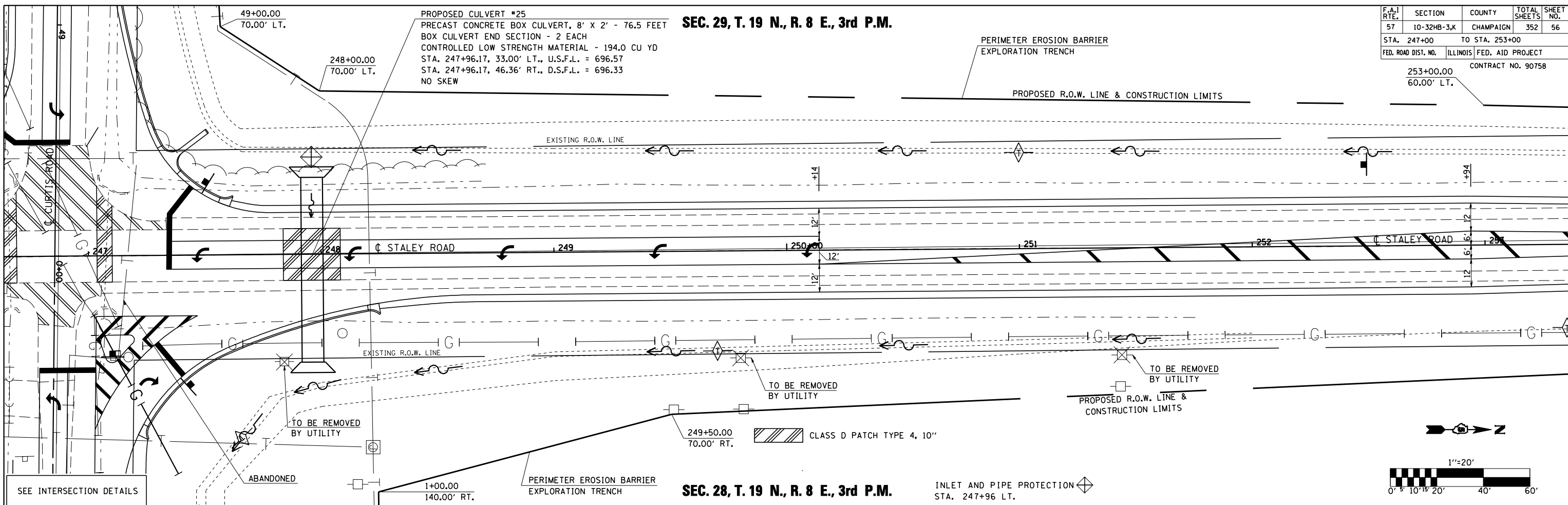
SEC. 29, T. 19 N., R. 8 E., 3rd P.M.

PROPOSED CULVERT #25
 PRECAST CONCRETE BOX CULVERT, 8' X 2' - 76.5 FEET
 BOX CULVERT END SECTION - 2 EACH
 CONTROLLED LOW STRENGTH MATERIAL - 194.0 CU YD
 STA. 247+96.17, 33.00' LT., U.S.F.L. = 696.57
 STA. 247+96.17, 46.36' RT., D.S.F.L. = 696.33
 NO SKEW

PERIMETER EROSION BARRIER
 EXPLORATION TRENCH

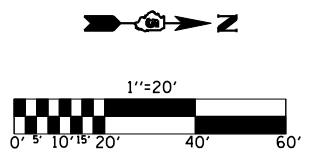
PROPOSED R.O.W. LINE & CONSTRUCTION LIMITS

PLAN	SURVEYED	BY	DATE
	PLOTTED		
	CHECKED		
	NO. OF WAY CHECKED		
	CADD FILE NAME		

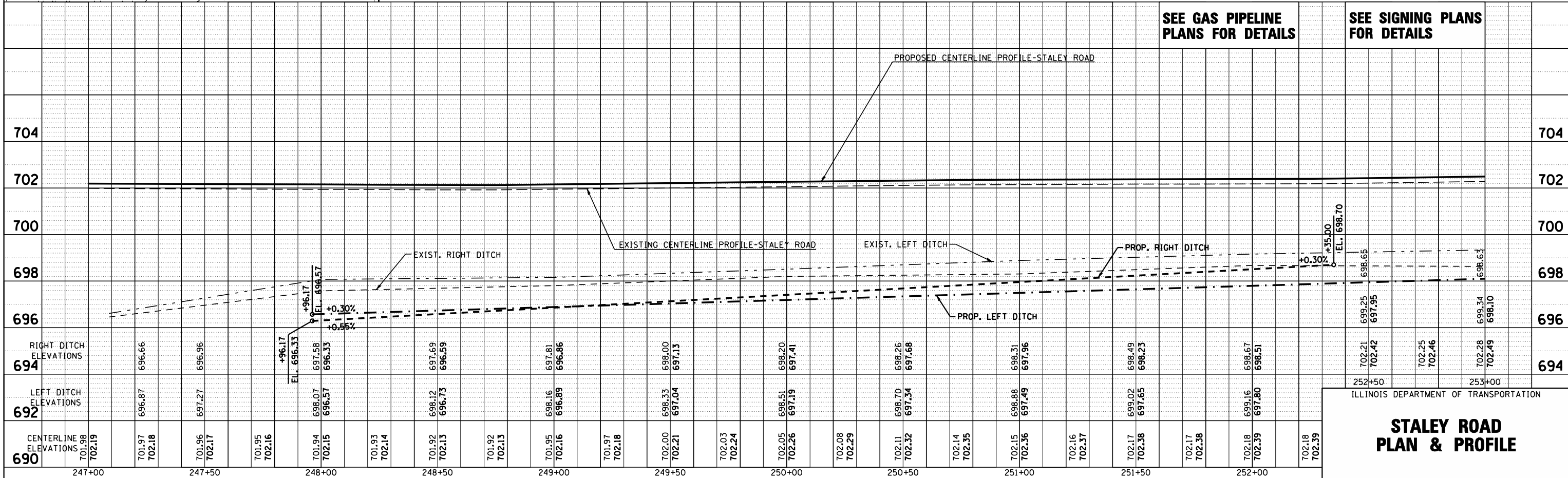


SEC. 28, T. 19 N., R. 8 E., 3rd P.M.

INLET AND PIPE PROTECTION
 STA. 247+96 LT.



PROFILE	SURVEYED	BY	DATE
	PLOTTED		
	CHECKED		
	NO. NOTED		
	STRUCTURE NOTATIONS CHRD		



SEE GAS PIPELINE
 PLANS FOR DETAILS

SEE SIGNING PLANS
 FOR DETAILS

ILLINOIS DEPARTMENT OF TRANSPORTATION

**STALEY ROAD
 PLAN & PROFILE**