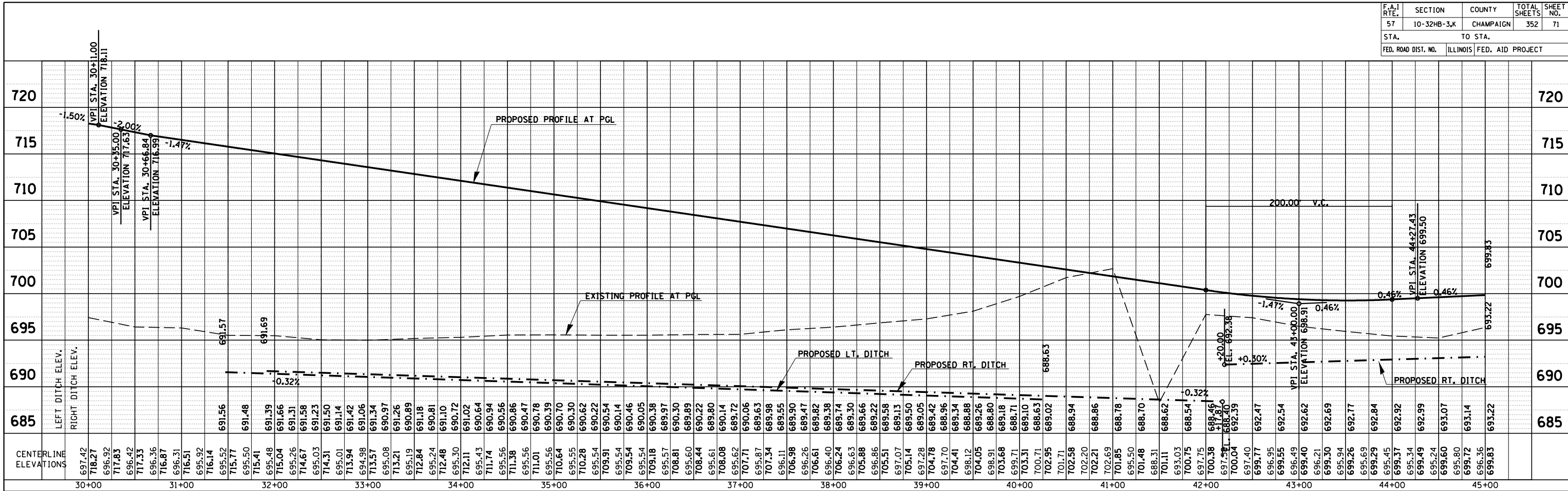
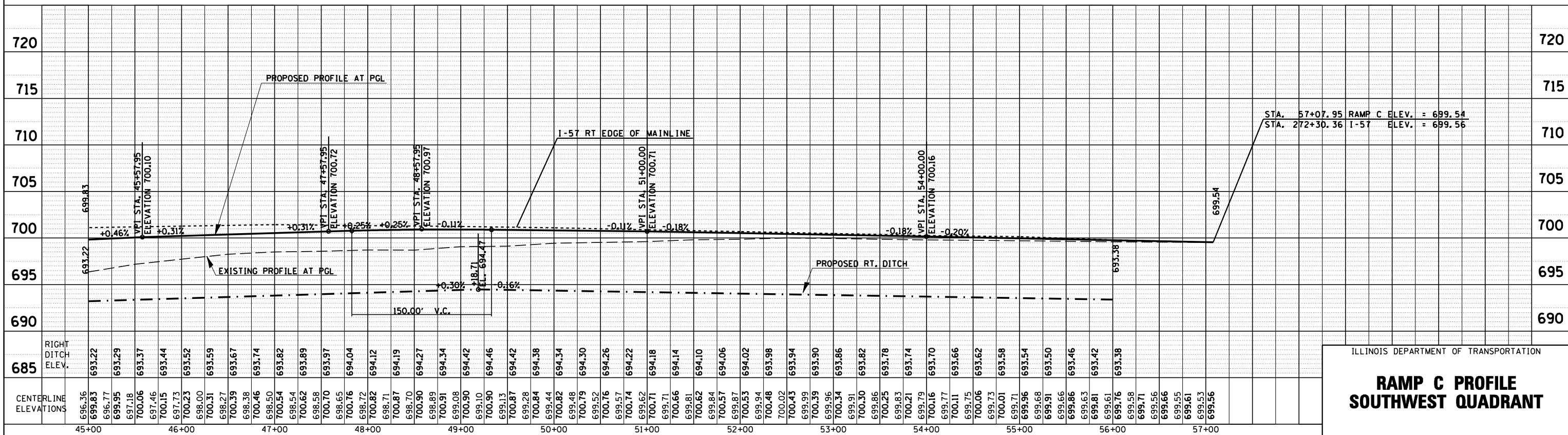


F.A.I. RTE.	SECTION	COUNTY	TOTAL SHEETS	SHEET NO.
57	10-32HB-3,K	CHAMPAIGN	352	71
STA.		TO STA.		
FED. ROAD DIST. NO.		ILLINOIS FED. AID PROJECT		



PROFILE SURVEYED	BY	DATE
PLOTTED		
CHECKED		
NOTE BOOK		
NO.		
STRUCTURE		
NOTATIONS		
CHRD		



ILLINOIS DEPARTMENT OF TRANSPORTATION

**RAMP C PROFILE  
SOUTHWEST QUADRANT**