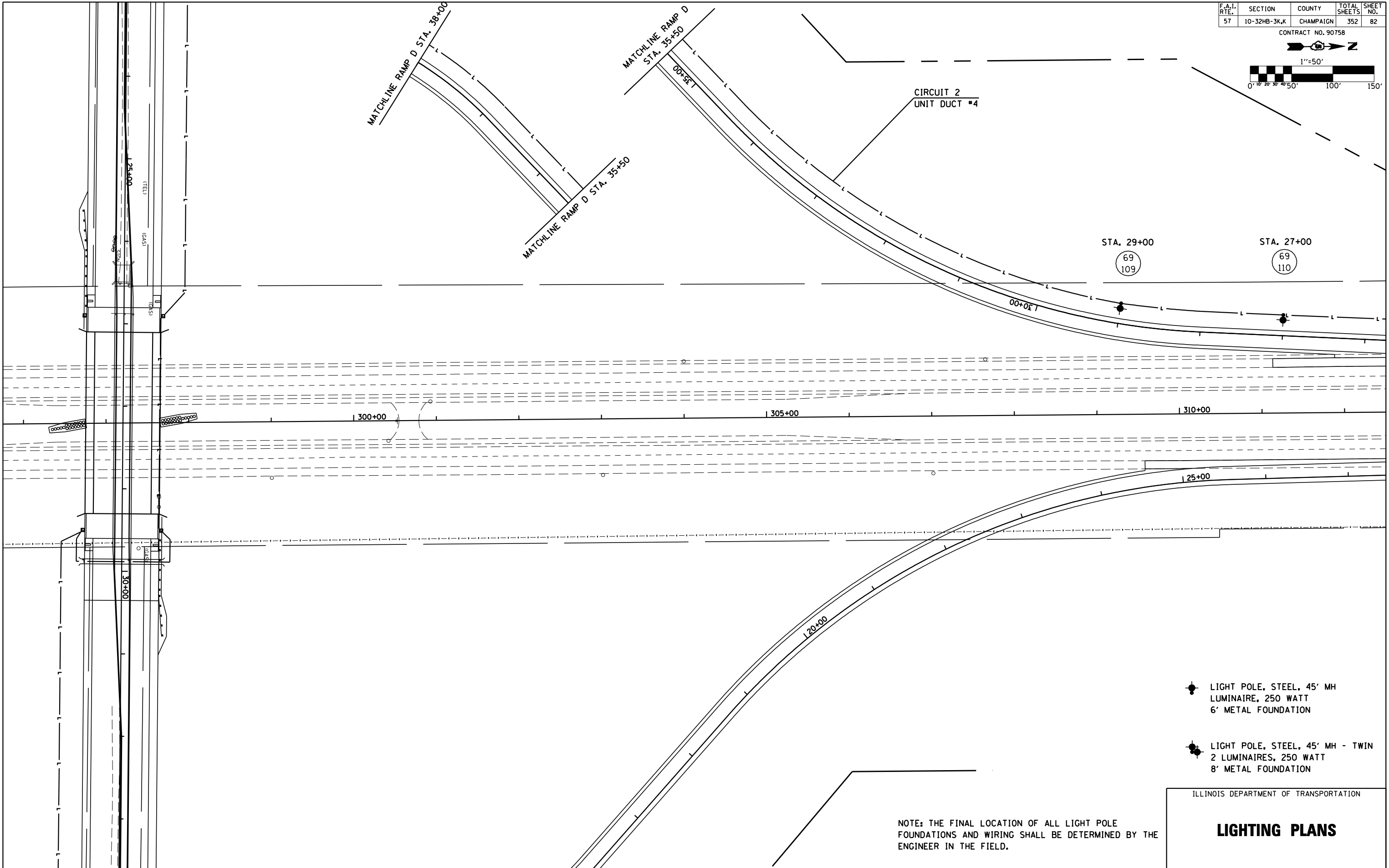
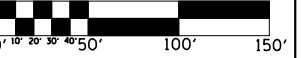



F.A.I. RTE.	SECTION	COUNTY	TOTAL SHEETS	SHEET NO.
57	10-32HB-3K,K	CHAMPAIGN	352	82


CONTRACT NO. 90758



1"=50'



 LIGHT POLE, STEEL, 45' MH  
 LUMINAIRE, 250 WATT  
 6' METAL FOUNDATION

 LIGHT POLE, STEEL, 45' MH - TWIN  
 2 LUMINAIRES, 250 WATT  
 8' METAL FOUNDATION

ILLINOIS DEPARTMENT OF TRANSPORTATION

### LIGHTING PLANS

NOTE: THE FINAL LOCATION OF ALL LIGHT POLE FOUNDATIONS AND WIRING SHALL BE DETERMINED BY THE ENGINEER IN THE FIELD.