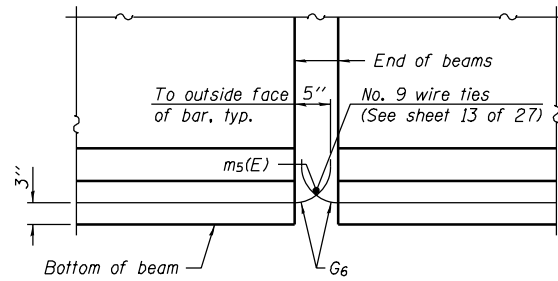


STATE OF ILLINOIS
DEPARTMENT OF TRANSPORTATION

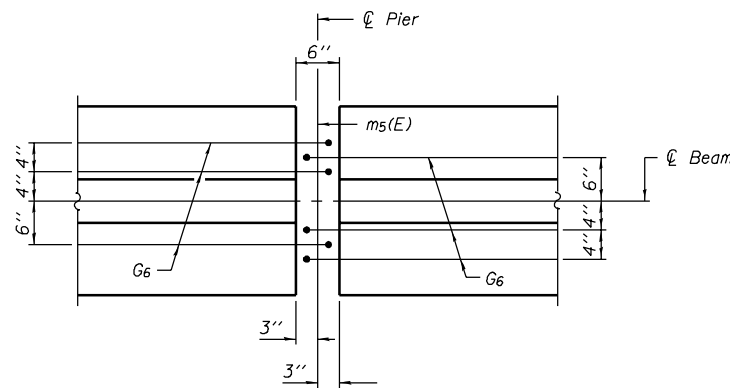
ROUTE NO. F.A.I. 57	SECTION 10-32HB-3,K	COUNTY CHAMPAIGN	TOTAL SHEETS 352	SHEET NO. 125
FED. ROAD DIST. NO. 7		ILLINOIS		FED. AID PROJECT-

SHEET NO. 16
27 SHEETS

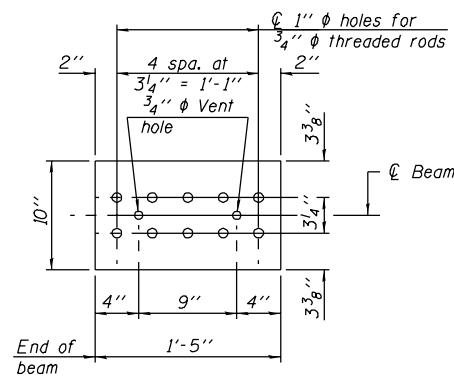
Contract #90758



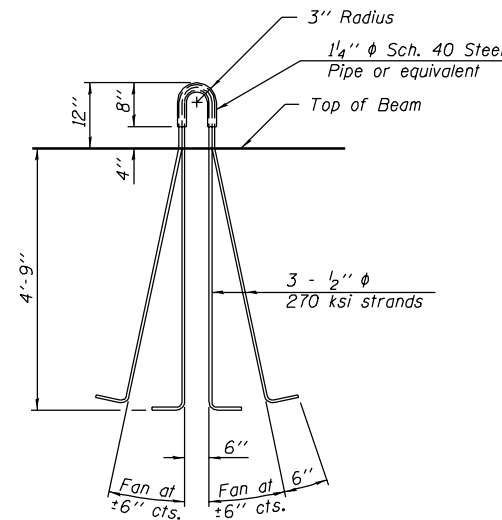
ELEVATION OF BEAM AT PIER



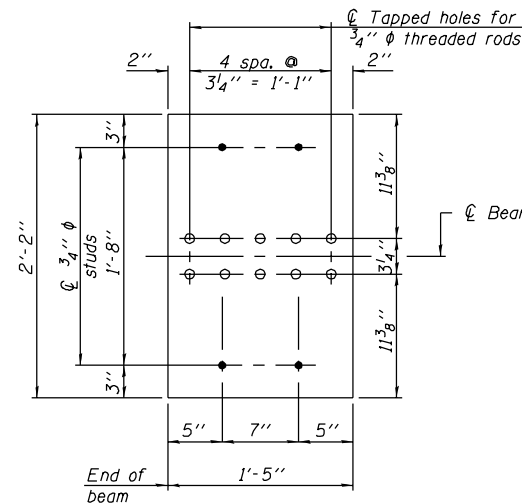
PLAN OF BEAM AT PIER



TOP PLATE



LIFTING LOOP DETAIL



BOTTOM PLATE

See bearing details for pintle hole locations when required.

NOTES

Inserts for $\frac{3}{4}$ " ϕ threaded dowel rods, when specified, are to be two strut, coil type for interior beams and single coil, flared loop type for exterior beams.

Prestressing steel shall be uncoated high strength, low relaxation 7-wire strand, Grade 270.

The nominal diameter shall be $\frac{1}{2}$ " and the nominal cross-sectional area shall be 0.153 sq. in.

Non-prestressing steel shall conform to AASHTO designation M31 or M 322, Grade 60.

A minimum $2\frac{1}{2}$ " ϕ lifting pin shall be used to engage the lifting loops during handling.

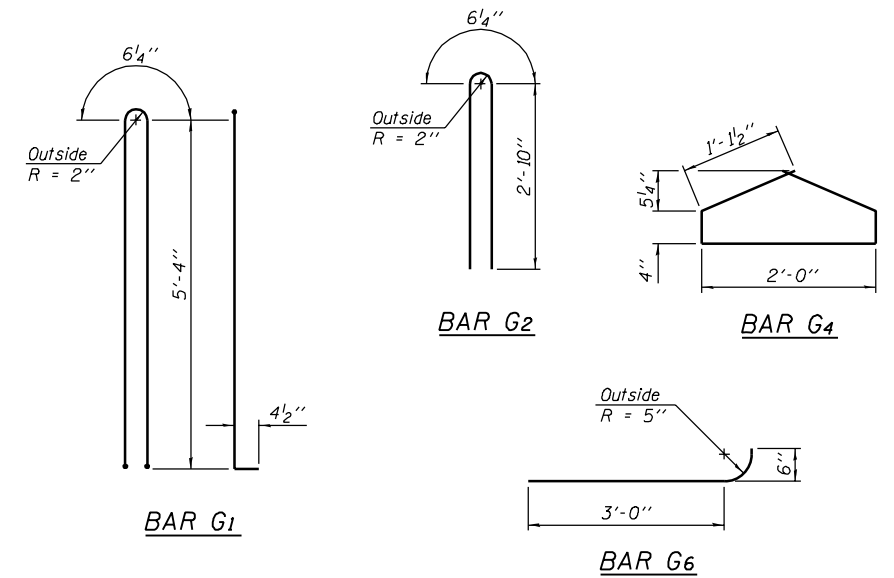
Reinforcement bars designated (E) shall be epoxy coated.

Cut G_6 bars when necessary to maintain $\frac{1}{2}$ " clearance.

The bottom plates and studs shall be galvanized according to AASHTO M111 and ASTM A385.

Threaded rods shall be ASTM F 1554 Grade 55.

The cut strands at each beam end shall be given two coats of zinc dust spray or paint meeting the requirements of ASTM A 780. The zinc dust spray or paint shall be applied before corrosion appears and allowed to dry according to the manufacturer's specifications prior to another coat of zinc. A concrete sealer meeting the requirements of Section 587 of the Standard Specifications shall be applied to all portions of the I-beam or Bulb-T beam, except the top surface of the top flange and the bottom surface of the bottom flange, starting at each beam end and extending out a distance of 63 inches. The sealer shall be applied after visible crack growth has subsided. This work shall be performed by the producer and included with the cost of the beam.



BILL OF MATERIAL

Item	Unit	Total
Furnishing and Erecting Precast Prestressed Concrete Bulb T-Beams, 63"	Ft.	3050

63" PPC BULB T-BEAM DETAILS
F.A.I. ROUTE 57 SEC. 10-32HB-3,K
CHAMPAIGN COUNTY
STATION 297+20.45
STRUCTURE NO. 010-0272

DESIGNED	Gholam R. Ahanchi
CHECKED	Rebecca L. Tharp
DRAWN	Michael B. Mossman
CHECKED	G.R.A. / R.L.T.

April 28, 2006
EXAMINED *Thomas J. Domagala*
PASSED *Ralph E. Anderson*
ENGINEER OF BRIDGE DESIGN
ENGINEER OF BRIDGES AND STRUCTURES