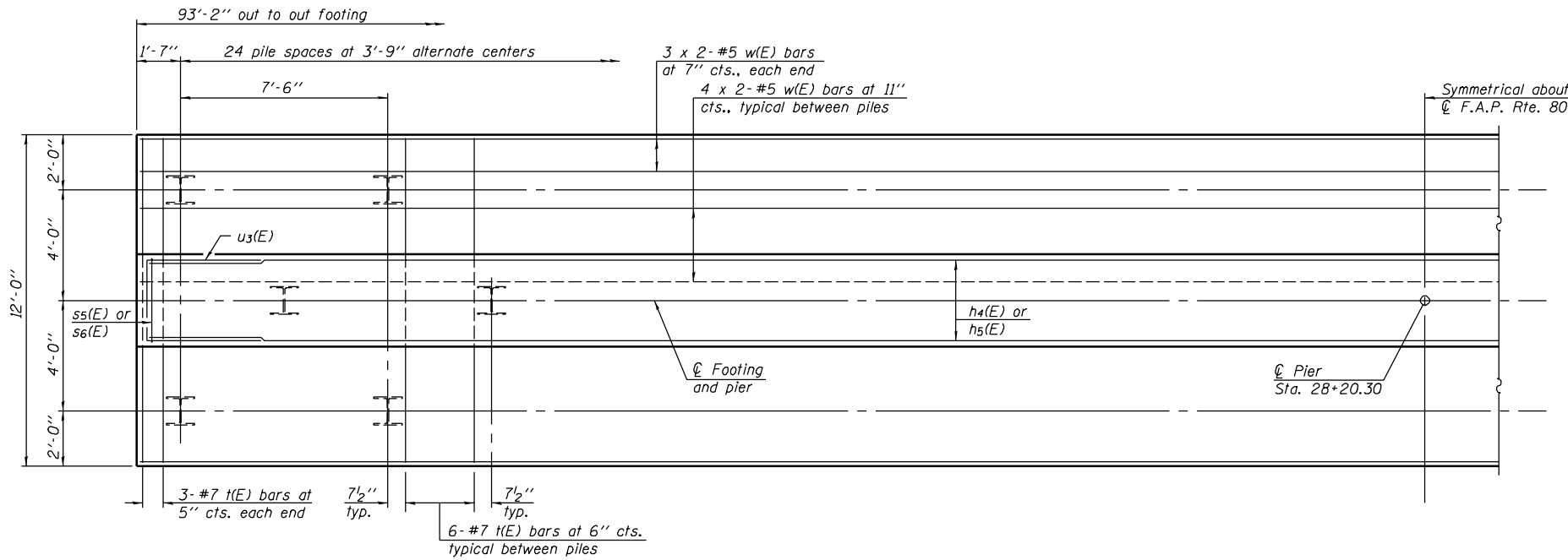


STATE OF ILLINOIS
DEPARTMENT OF TRANSPORTATION

ROUTE NO. F.A.I. 57	SECTION 10-32HB-3,K	COUNTY CHAMPAIGN	SHEETS 352	SHEET NO. 131
FED. ROAD DIST. NO. 7		ILLINOIS	FED. AID PROJECT-	

SHEET NO. 22
27 SHEETS

Contract #90758



FOOTING PLAN

MINIMUM BAR LAP
#5 bar = 2'-2"

PILE DATA

Type: HP 12x74
Design Capacity: 75 Tons driven to 113 Tons Brg.
Est. Length: 64 ft.
No. Req'd: 37 + 1 Test pile

BILL OF MATERIAL

Bar	No.	Size	Length	Shape
h1(E)	6	#4	27'-5"	—
h2(E)	3	#4	13'-0"	—
h3(E)	12	#6	47'-9"	—
h4(E)	24	#7	48'-2"	—
h5(E)	24	#5	47'-6"	—
n(E)	102	#9	9'-6"	U
p1(E)	24	#10	50'-0"	—
p2(E)	24	#8	48'-8"	—
s4(E)	320	#5	12'-11"	□
s5(E)	94	#6	14'-10"	U
s6(E)	94	#6	13'-0"	U
sp(E)	6	#4	12'-4"	ΛΛΛ
t(E)	150	#7	11'-8"	—
u1(E)	54	#4	5'-2"	□
u2(E)	14	#4	6'-0"	□
u3(E)	24	#6	10'-1"	□
v3(E)	102	#9	15'-2"	—
v4(E)	78	#8	4'-2"	U
w(E)	28	#5	47'-6"	—
Concrete Structures		Cu. Yd.	250.4	
* Reinforcement Bars, Epoxy Coated		Pound	38140	
Structure Excavation		Cu. Yd.	230	
Furnishing Steel Piles HP 12x74		Foot	2368	
Driving Steel Piles HP 12x74		Foot	2368	
Test Pile Steel HP 12x74		Each	1	

**

*

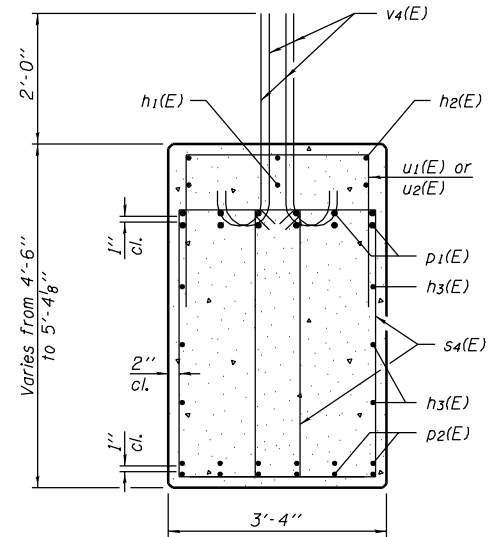
Reinforcement Bars designated (E) shall be epoxy coated.

Bars indicated thus 20 x 3-#5 etc. indicates 20 lines of bars with 3 lengths per line.

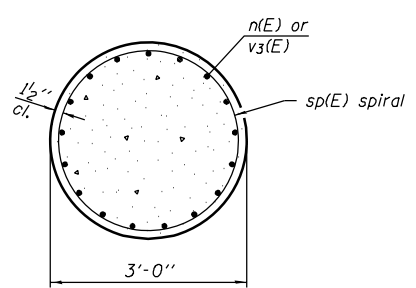
Minimum lap for sp(E) = 48 bar diameters.

* Weight includes spacers for spirals.

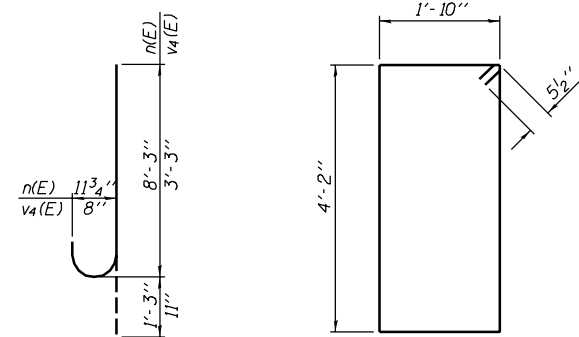
** Length is height of spiral.



SECTION A-A

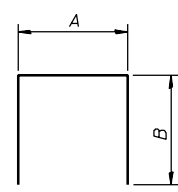


SECTION B-B



BAR n(E)
or v4(E)

BAR s4(E)



BARS s5(E), s6(E), u1(E),
u2(E) and u3(E)

A & B DIMENSIONS

Bar	A	B
s5(E)	3'-0"	5'-11"
s6(E)	3'-0"	5'-0"
u1(E)	2'-8"	1'-3"
u2(E)	2'-8"	1'-8"
u3(E)	2'-11"	3'-7"

DESIGNED	Gholam R. Ahanchi
CHECKED	Rebecca L. Tharp
DRAWN	Michael B. Mossman
CHECKED	G.R.A. / R.L.T.

DATE	April 28, 2006
EXAMINED	Thomas J. Domagala
PASSED	Ralph E. Anderson

PIER DETAILS
F.A.I. ROUTE 57 SEC. 10-32HB-3,K
CHAMPAIGN COUNTY
STATION 297+20.45
STRUCTURE NO. 010-0272