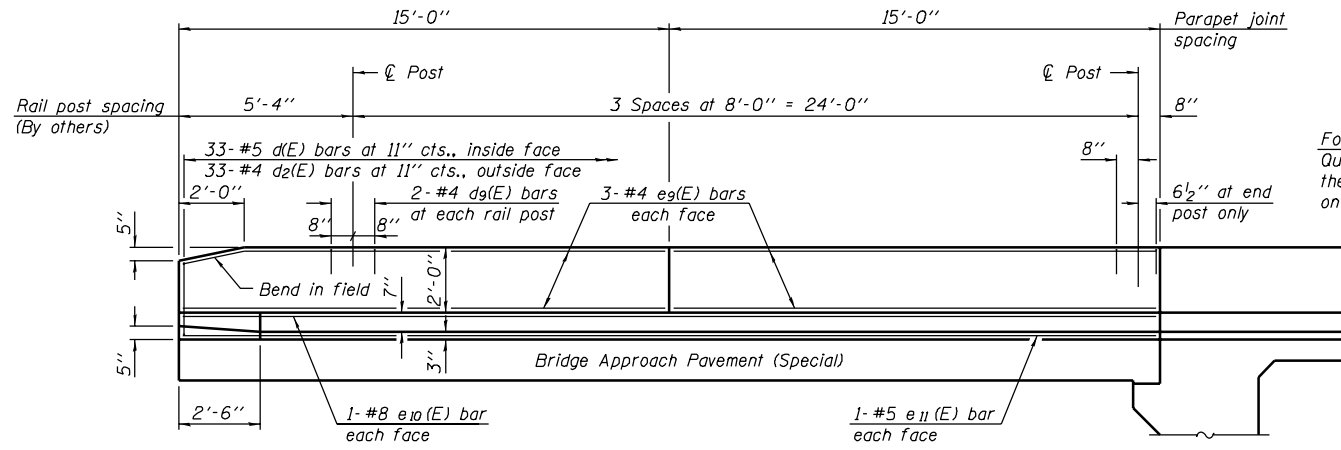


STATE OF ILLINOIS
DEPARTMENT OF TRANSPORTATION

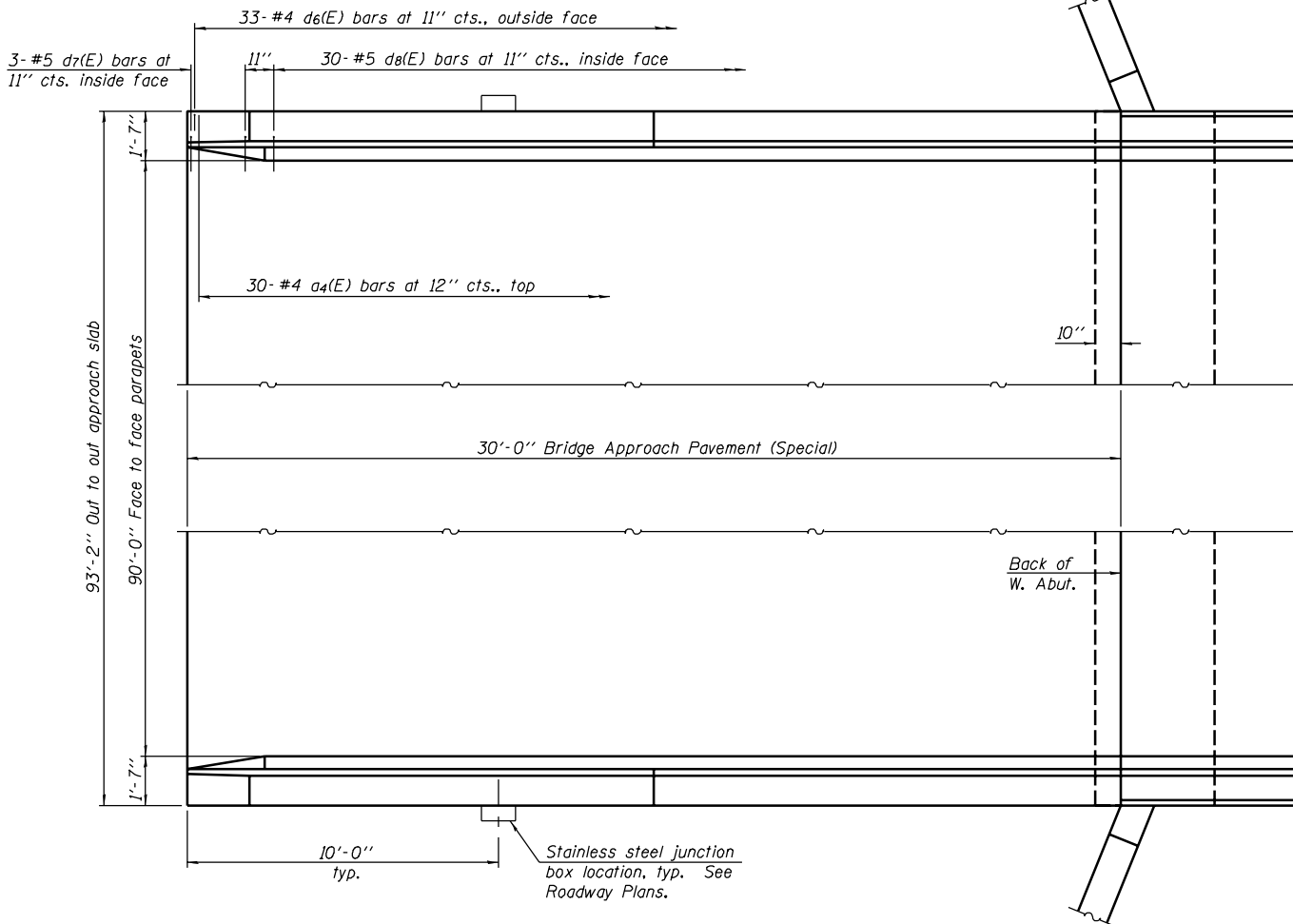
ROUTE NO.	SECTION	COUNTY	TOTAL SHEETS	SHEET NO.
F.A.I. 57	10-32HB-3.K	CHAMPAIGN	352	133
FED. ROAD DIST. NO. 7	ILLINOIS	FED. AID PROJECT		

SHEET NO. 24
27 SHEETS

Contract #90758



INSIDE ELEVATION OF PARAPET
North parapet shown

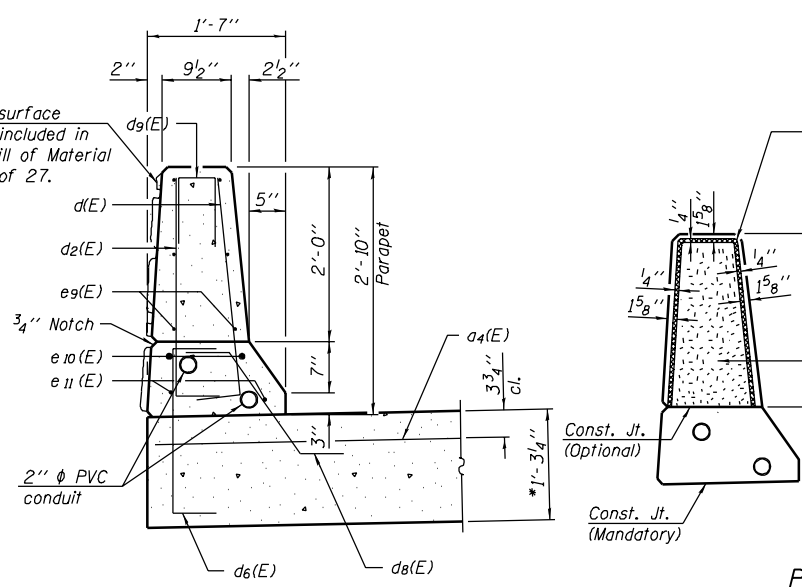


PLAN - WEST APPROACH
East approach similar

DESIGNED	Gholam R. Ahanchi
CHECKED	Rebecca L. Tharp
DRAWN	Michael B. Mossman
CHECKED	G.R.A. / R.L.T.

April 28, 2006
EXAMINED *Thomas J. Domagala*
PASSED *Ralph E. Anderson*
ENGINEER OF BRIDGE DESIGN
ENGINEER OF BRIDGES AND STRUCTURES

Form liner surface
Quantity is included in the Total Bill of Material on sheet 1 of 27.



SECTION THRU APPROACH PARAPET
* Prior to grinding.

Non-staining gray one component non-sag elastomeric gun grade polyurethane sealant meeting the requirements of ASTM C-920, Type S, Grade NS, Class 25, Use T.

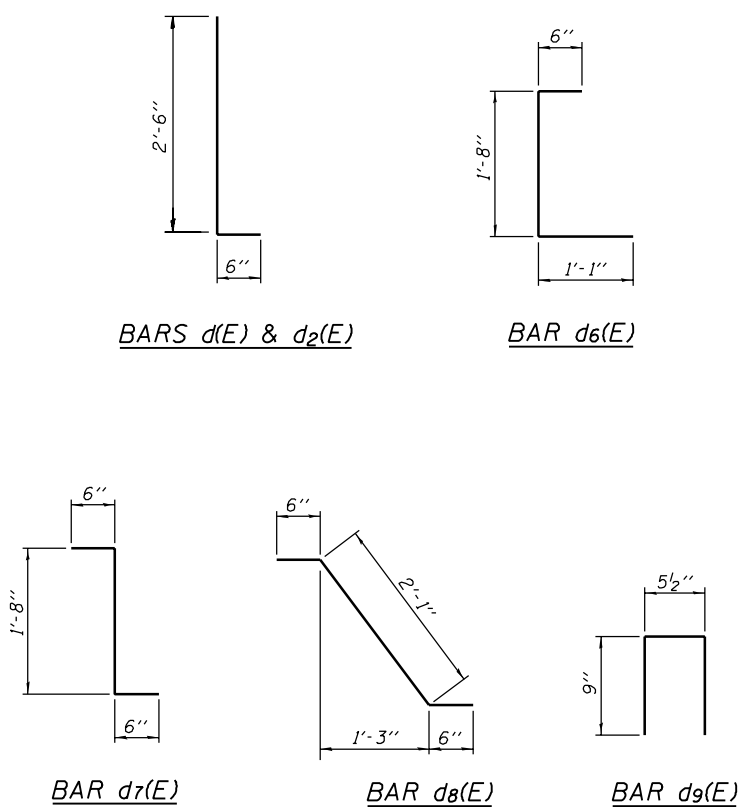
PARAPET JOINT DETAILS

TWO APPROACH PAVEMENT PARAPETS BILL OF MATERIAL

Bar	No.	Size	Length	Shape
a4(E)	120	#4	6'-0"	—
d(E)	132	#5	3'-0"	—
d2(E)	132	#4	3'-0"	—
d6(E)	132	#4	3'-3"	L
d7(E)	12	#5	2'-8"	L
d8(E)	120	#5	3'-1"	\
d9(E)	32	#4	1'-11 1/2"	Π
e9(E)	48	#4	14'-9"	—
e10(E)	8	#8	29'-9"	—
e11(E)	8	#5	29'-9"	—
** Concrete Superstructure		Cu. Yds.	13.2	
Reinforcement Bars, Epoxy Coated		Lbs.	3260	

** Concrete Superstructure on this sheet includes parapet only.

Notes:
Cost of Concrete Superstructure and reinforcement bars on this sheet is included with Bridge Approach Pavement (Special). Quantities are shown for information only.
For quantity of Bridge Approach Pavement (Special), see roadway plans.
Reinforcement bars designated (E) shall be epoxy coated.
For additional approach pavement details, see roadway plans.
See sheet 10 of 27 for form liner texture details.



BRIDGE APPROACH PAVEMENT (SPECIAL) PARAPET DETAILS
F.A.I. ROUTE 57 SEC. 10-32HB-3.K
CHAMPAIGN COUNTY
STATION 297+20.45
STRUCTURE NO. 010-0272