

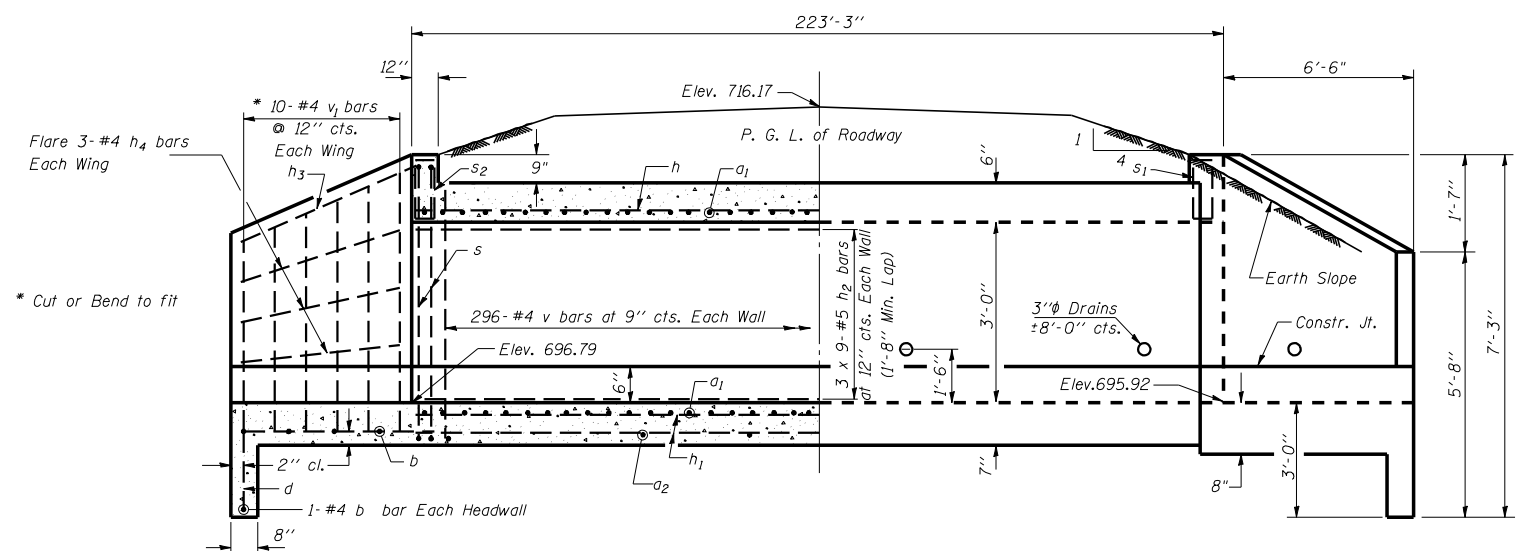
F.A.I. RTE.	SECTION	COUNTY	TOTAL SHEETS	SHEET NO.
57	10-32HB-3,K	Champaign	352	151
STA.		TO STA.		
FED. ROAD DIST. NO.		ILLINOIS FED. AID PROJECT		
CONTRACT NO. 90758				

DETAIL OF CAST IN PLACE BOX CULVERT & END SECTION

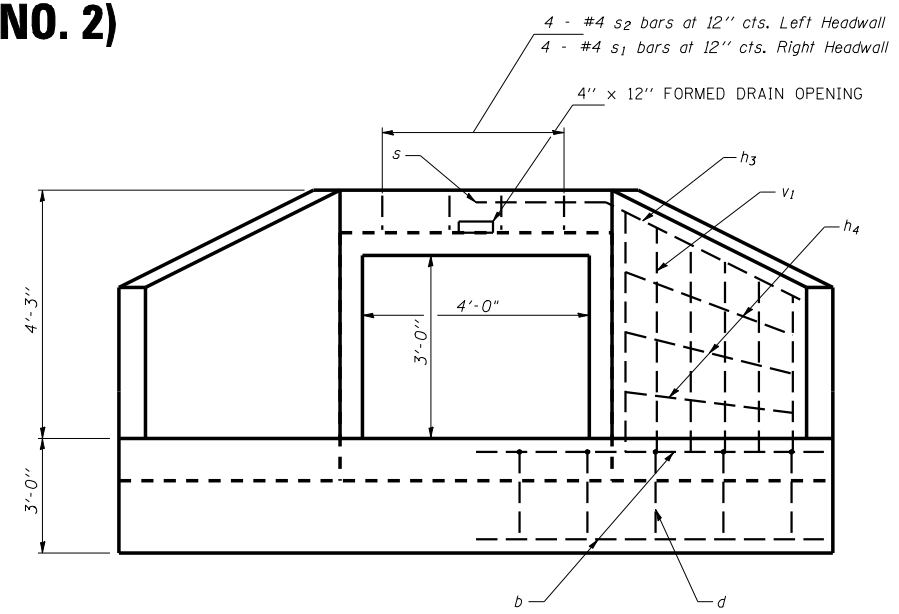
A.R. BOX CULVERT 1 @ 4.0' X 3.0'

STA. 36 + 46.82 (CULVERT NO. 2)

PRECAST OPTION
NOT ALLOWED



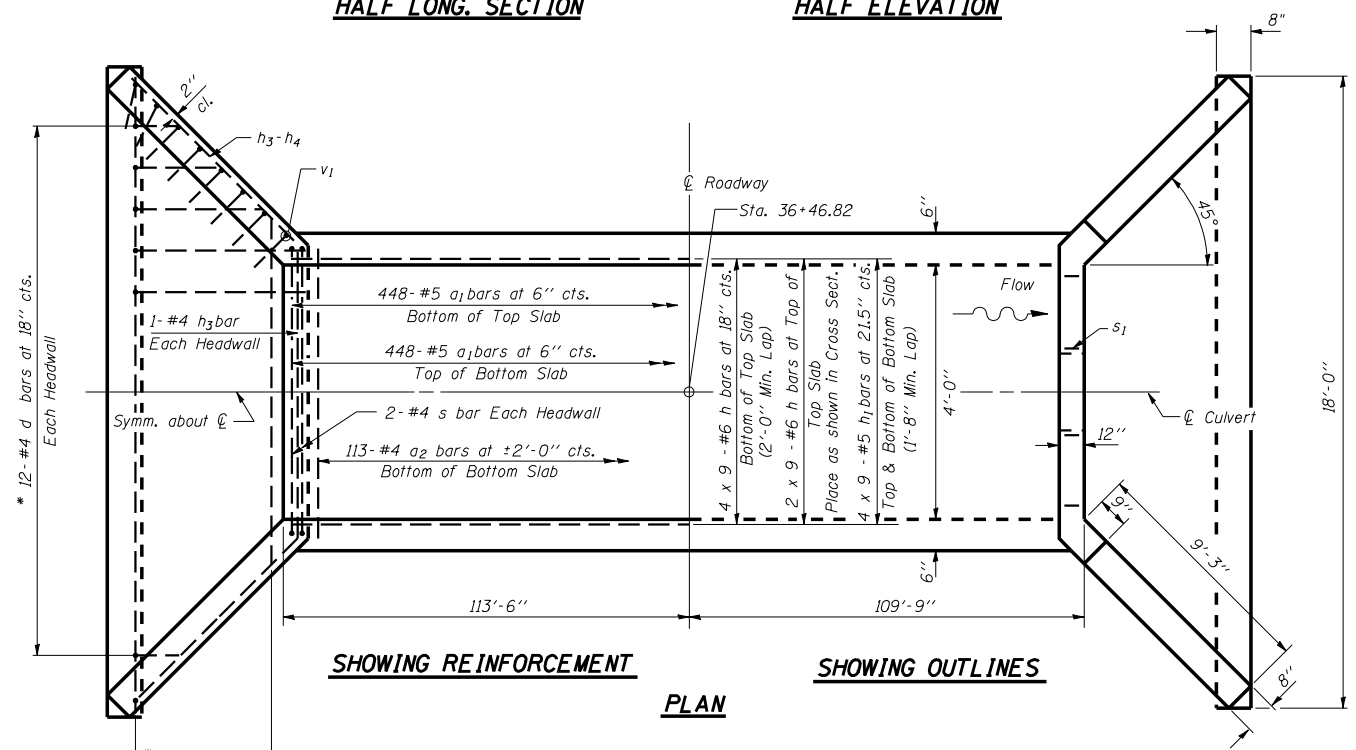
HALF LONG SECTION HALF ELEVATION



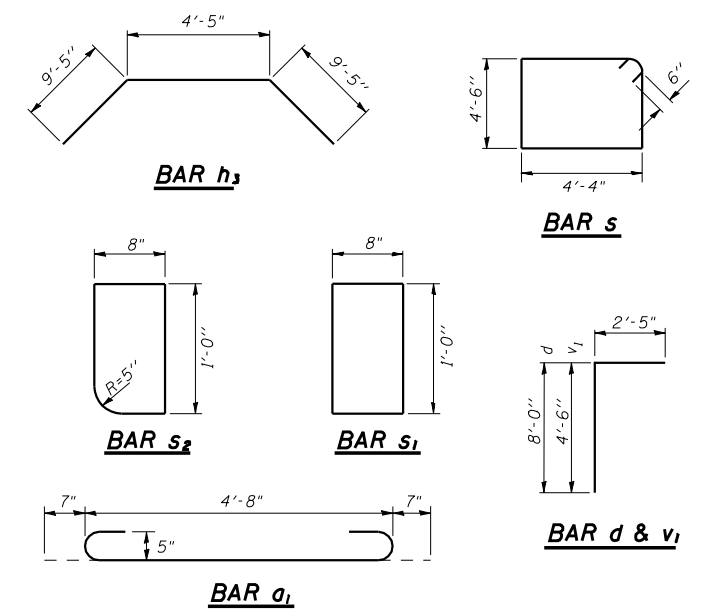
END VIEW

BILL OF MATERIAL

Bar	No.	Size	Length	Shape
a1	896	#5	5'-10"	U
a2	113	#4	4'-8"	U
b	12	#4	17'-8"	—
d	24	#4	10'-5"	L
h	54	#6	26'-7"	—
h1	72	#5	26'-4"	—
h2	54	#5	26'-4"	—
h3	2	#4	23'-3"	—
h4	12	#4	9'-4"	—
s	4	#4	18'-8"	U
s1	4	#4	3'-4"	U
s2	4	#4	3'-4"	U
v	592	#4	3'-9"	—
v1	40	#4	6'-11"	L
Concrete Box Culverts				Cu. Yd. 78.7
Reinforcement Bars				Pound 13,572

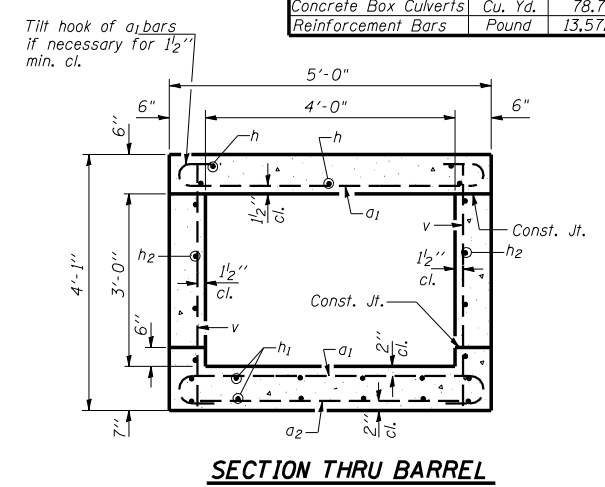


SHOWING REINFORCEMENT SHOWING OUTLINES

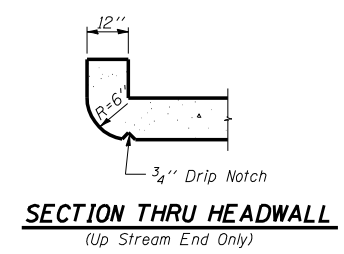


DESIGN STRESSES
 fy = 60,000 psi
 f'c = 3,500 psi

LOADING HS 20-44 & ALT.



SECTION THRU BARREL



SECTION THRU HEADWALL
(Up Stream End Only)

BOX CULVERT & END SECTIONS (CAST IN PLACE)
1 @ 4.0' X 3.0'
STA. 36+46.82 NO SKEW

NOTES
 A distance of half the length of the wingwall but not less than six feet of the barrel shall be poured monolithically with the wingwalls.
 Reinforcement Bars shall conform to the requirements of AASHTO M-31, M-42 or M-53, Grade 60.
 Bars indicated thus 12 x 4-#5 etc. indicates 12 lines of bars with 4 lengths per line.
 All construction joints shall be bonded.
 Any excavation required for box culvert construction shall be included in the contract unit price for concrete, per Art. 502.15.

REVISIONS		ILLINOIS DEPARTMENT OF TRANSPORTATION
NAME	DATE	
		CULVERT DETAILS
SCALE:	VERT. 1"=4'-0"	DRAWN BY JDC CHECKED BY JDE
DATE:	HORIZ. 1"=40'-0"	