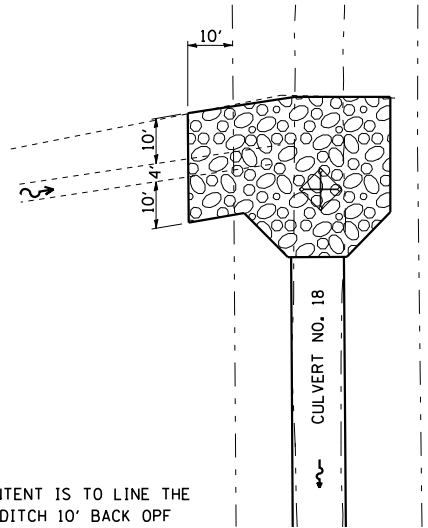


STONE RIPRAP CLASS A 4 DETAILS, PAY LIMITS AND QUANTITIES

SHEET 2 OF 2

F.A.I. RTE.	SECTION	COUNTY	TOTAL SHEETS	SHEET NO.
57	10-32HB-3,K	Champaign	352	173
STA.		TO STA.		
FED. ROAD DIST. NO.	ILLINOIS	FED. AID PROJECT		
CONTRACT NO. 90758				

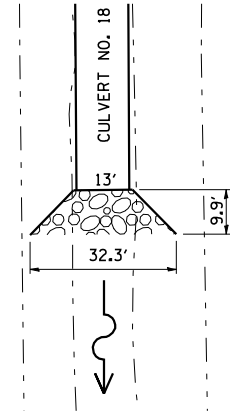
CULVERT NO. 18
UPSTREAM END



• THE INTENT IS TO LINE THE RAMP DITCH 10' BACK OFF DROP OFF THRU DRAINAGE DITCH.

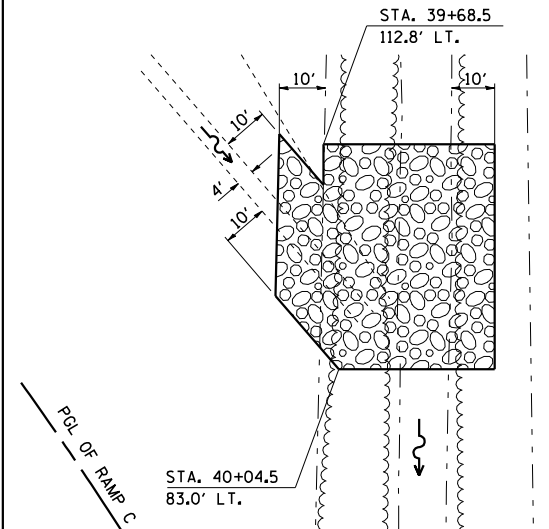
TOTAL AREA: 148.0 SQ YD

CULVERT NO. 18
DOWN STREAM END SECTION



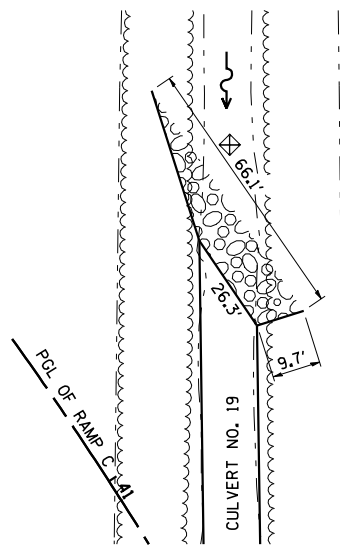
TOTAL AREA: 25.0 SQ YD

OUTFALL FOR RAMP C - LEFT DITCH



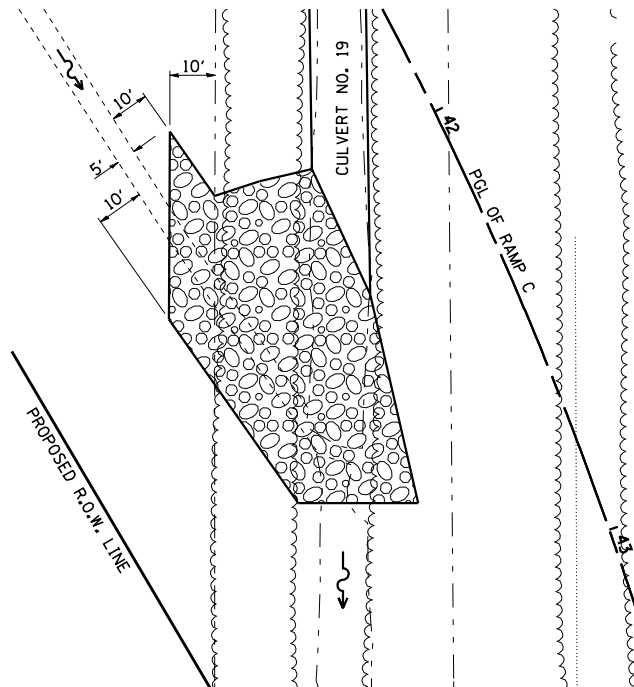
ESTIMATED AREA: 248.7 SQ YD

CULVERT NO. 19
UP STREAM END SECTION



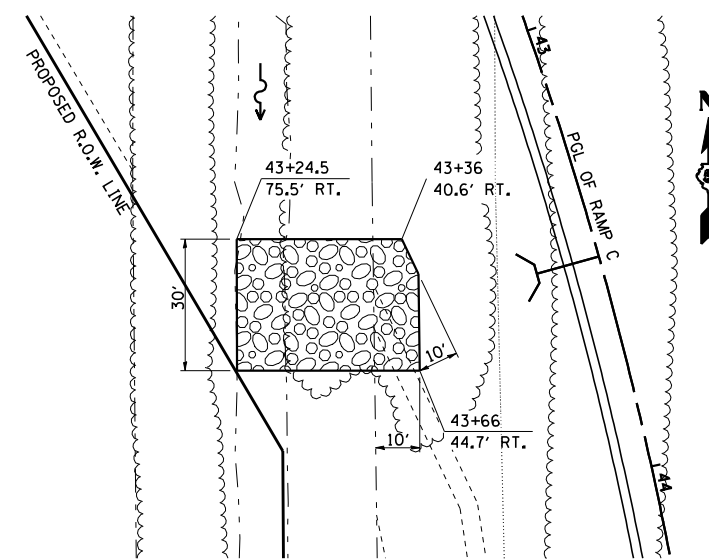
TOTAL AREA: 49.8 SQ YD

CULVERT NO. 19
DOWN STREAM END SECTION



ESTIMATED AREA: 262.1 SQ YD

OUT FALL FOR RAMP C - RIGHT DITCH
STA. 43+36 TO STA. 43+66



ESTIMATED AREA: 128.0 SQ YD

• INTENT IS TO LINE THE RAMP DITCH 10' BACK OF DROP OFF THRU THE BOTTOM OF DRAINAGE DITCH.

ILLINOIS DEPARTMENT OF TRANSPORTATION
RIPRAP DETAILS, PAY LIMITS AND QUANTITIES

SCALE: NOT TO SCALE
DATE: 02/27/06
DRAWN BY: BBP
CHECKED BY: JDC