

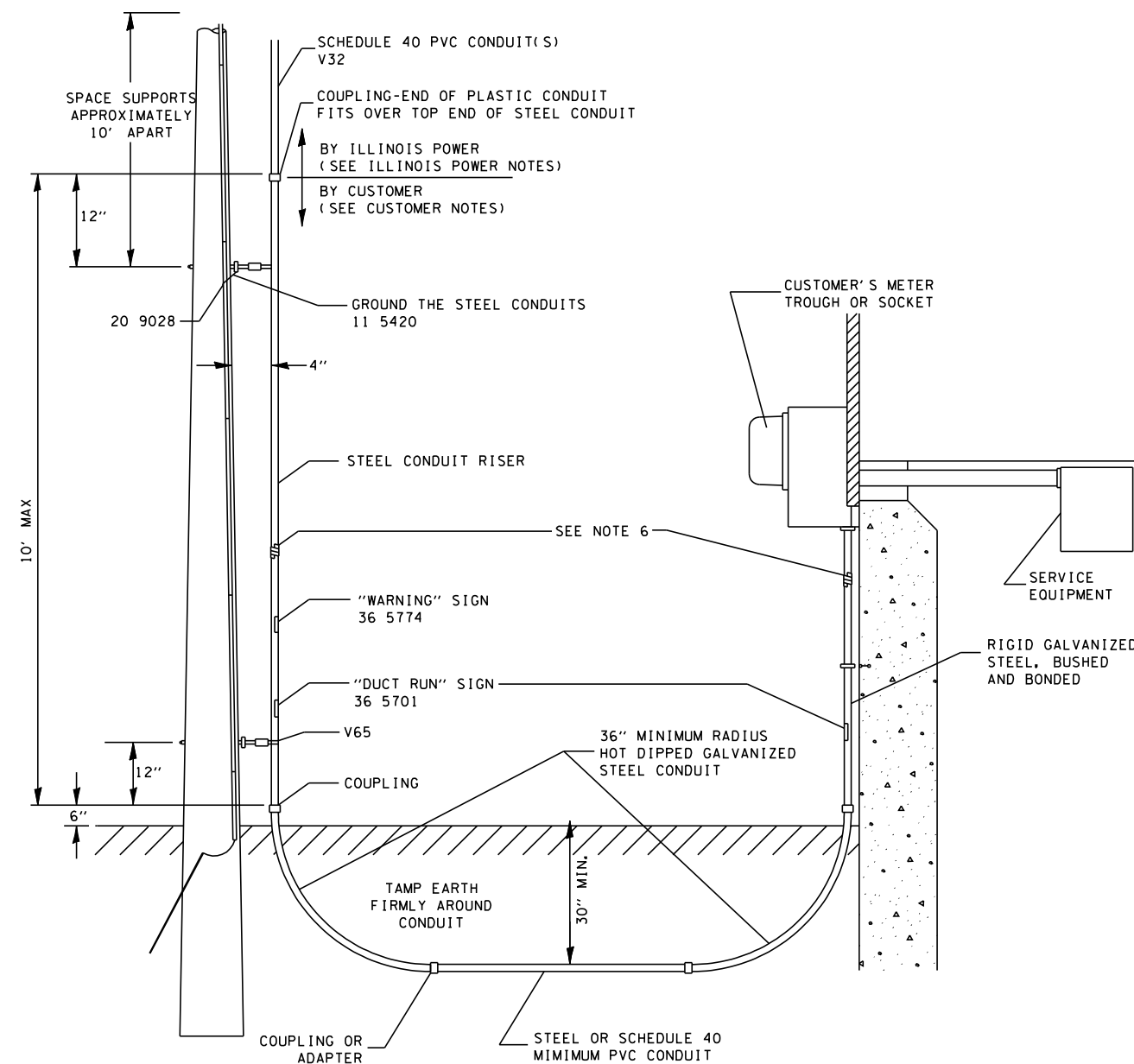
F.A.I. RTE.	SECTION	COUNTY	TOTAL SHEETS	SHEET NO.
57	10-32HB-3,K	Champaign	352	175

CONTRACT NO. 90758

### AMEREN-IP DETAIL

ELECTRIC DISTRIBUTION STANDARDS 37-2.3  
 ELECTRIC METER STANDARDS 12-4.101  
 "UNDERGROUND RISER DIRECT-BURIED CONDUIT SYSTEM"

NOTE: FOR ADDITIONAL INFORMATION, REFER TO SPECIAL PROVISION FOR ELECTRIC SERVICE INSTALLATION LOCATION NO. 1. DETAIL WAS REPRODUCED FROM A DRAWING PROVIDED BY AMEREN-IP POWER COMPANY. ALL PARTS OF DRAWING DO NOT NECESSARILY APPLY TO THIS CONTRACT. POLE IS TO BE INSTALLED BY AMEREN-IP.



**CUSTOMER NOTES:**

- 1) CONSULT LOCAL ILLINOIS POWER OFFICE FOR REQUIRED NUMBER AND SIZE OF CONDUITS.
- 2) POLE SHOULD BE IN PLACE BEFORE INSTALLING CONDUIT BEND(S) AND RISER(S) AT THE POLE END.
- 3) CUSTOMER TO INSTALL RISER(S) AT METER SOCKET, ALL UNDERGROUND CONDUIT(S) AND FIRST LENGTH OF CONDUIT(S) UP RISER POLE.
- 4) LEAVE PULL WIRE IN CONDUIT AND INSTALL A TEMPORARY SEAL ON THE CONDUIT AT THE POLE END.

**ILLINOIS POWER NOTES:**

- 5) ILLINOIS POWER TO INSTALL ALL POLE ATTACHMENT HARDWARE, GROUNDING EQUIPMENT AND SIGNAGE ON RISER POLE. ILLINOIS POWER TO INSTALL SIGNAGE ON METER RISER.
- 6) ILLINOIS POWER TO INSTALL COLORED TAPE AS PER EDS 33-4.1 THROUGH 33-4.4.
- 7) SEE EDS 31-11.1 FOR CONDUIT STOCK CODES.
- 8) SEE EDS 37-2.1 FOR CONDUIT SUPPORT DETAILS.
- 9) SEE EDS 35-12.3 FOR PULLING COMPOUNDS.
- 10) SEAL CONDUIT(S) AS PER EDS 37-1.4 AND 37-1.5.
- 11) SEE EDS 24-31.2 FOR GROUNDING DETAILS.

ILLINOIS DEPARTMENT OF TRANSPORTATION

**DETAILS**