

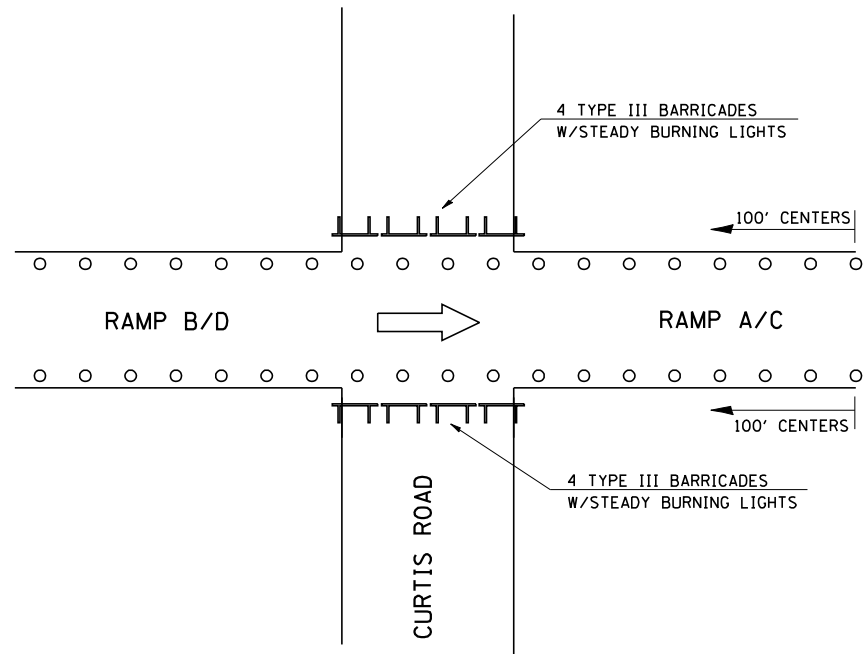
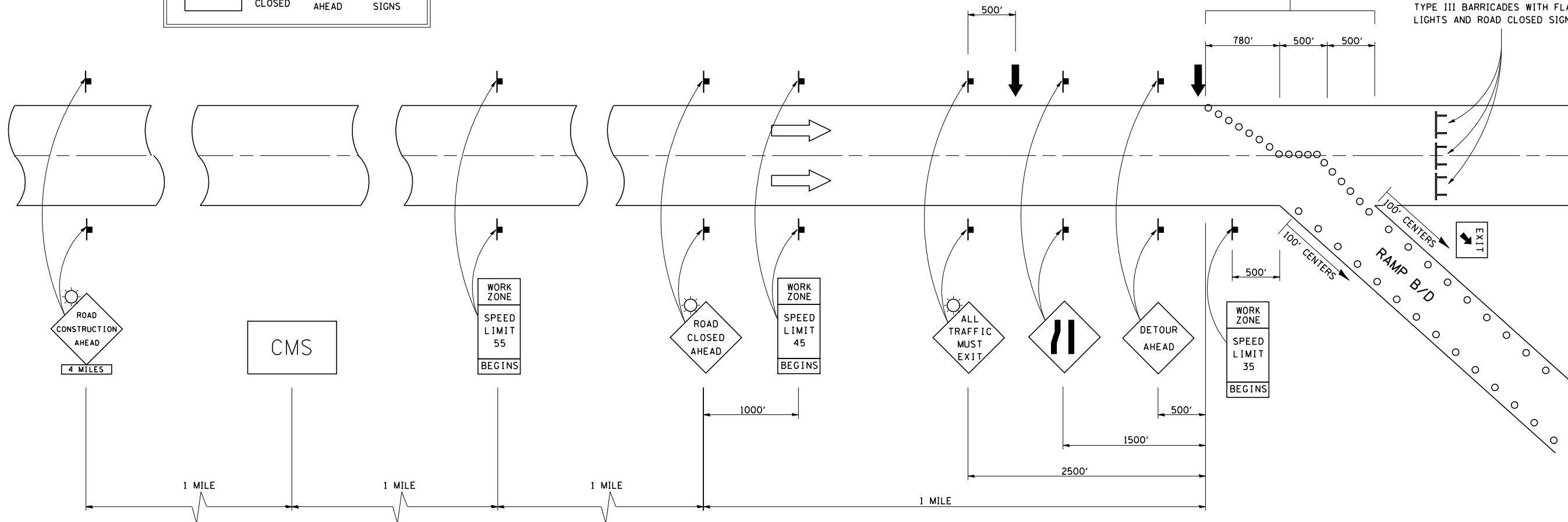
INTERSTATE DETOUR USING ENTRANCE AND EXIT RAMP

A CHANGEABLE MESSAGE SIGN SHALL BE USED IN ADVANCE OF SIGNING TO WARN OF CLOSURE

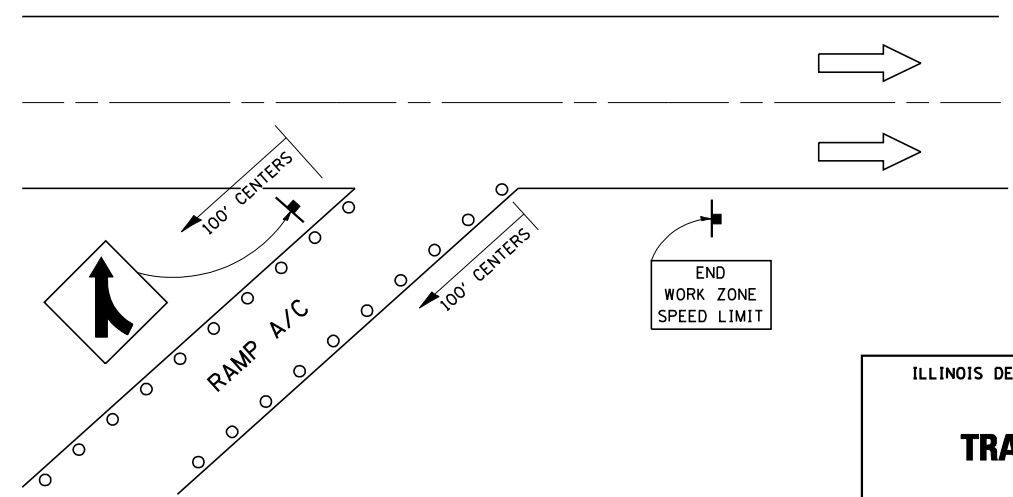
CMS	ROAD CLOSED	3 MILES AHEAD	FOLLOW DETOUR SIGNS
-----	-------------	---------------	---------------------

DRUMS OR DIRECTIONAL BARRICADES WITH STEADY BURNING LIGHTS AT 50' (15 m) CTS. IN TAPER.
 DRUMS WITH STEADY BURNING LIGHTS IN TANGENT (BETWEEN TAPERS) AT 100' (30 m) CTS.

TYPE III BARRICADES WITH FLASHING LIGHTS AND ROAD CLOSED SIGNS



SYMBOLS	
	ARROW BOARD
	SIGN
	DRUM W/STEADY BURNING LIGHT
	TYPE III BARRICADE



ILLINOIS DEPARTMENT OF TRANSPORTATION

TRAFFIC CONTROL DETAIL