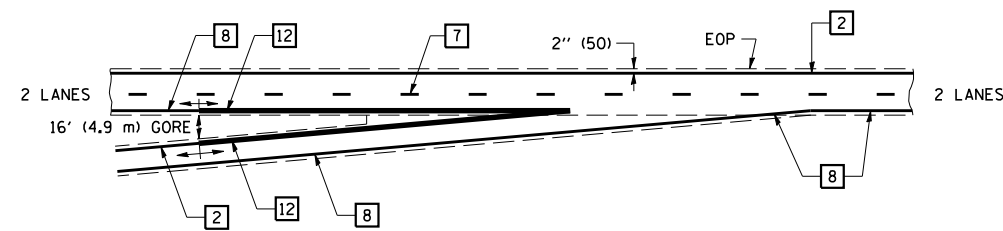


F.A.I. RTE.	SECTION	COUNTY	TOTAL SHEETS	SHEET NO.
57	10-32HB-3,K	CHAMPAIGN	352	189

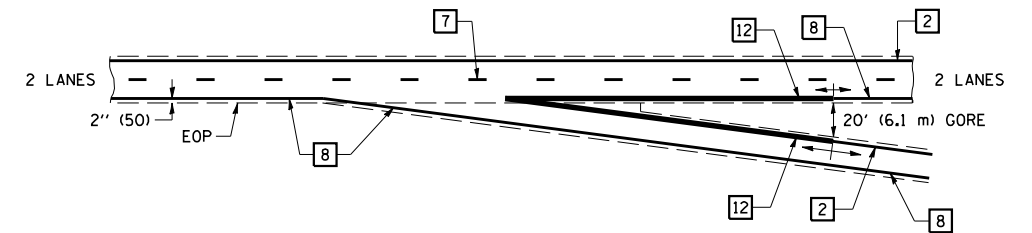
CONTRACT NO. 90758

## TYPICAL APPLICATION OF PAVEMENT MARKINGS FOR INTERSTATE AND MULTI-LANE DIVIDED HIGHWAYS

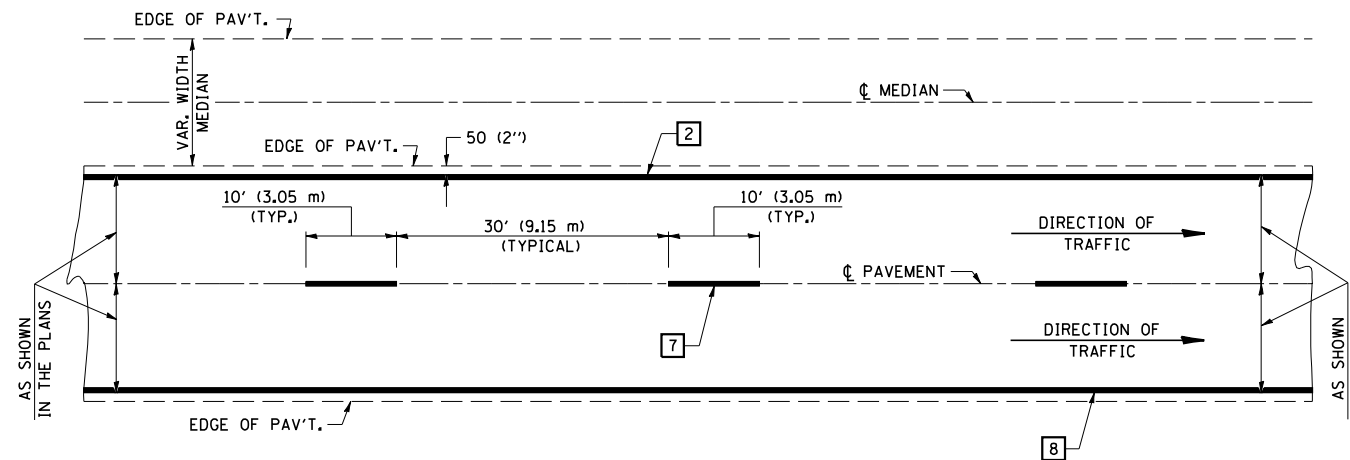
**TYPICAL ENTRANCE RAMP TERMINAL**



**TYPICAL EXIT RAMP TERMINAL**



**CENTERLINE INTERSTATE OR MULTI-LANE TWO WAY DIVIDED HIGHWAY**



NOTE: PAVEMENT MARKINGS ARE TO BE EXTENDED THROUGH OMISSIONS WHEN APPLICABLE.

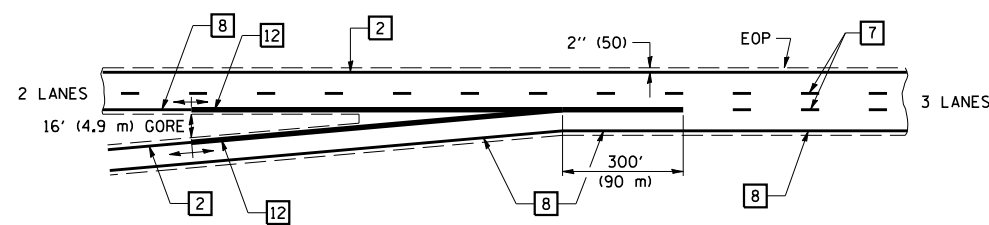
NOTE: SEE ARTICLES 780.04 & 781.03 FOR LOCATION OF STRIPES AND MARKERS RELATIVE TO EDGES OR JOINTS.

FOR RAISED REFLECTIVE PAVEMENT MARKERS, REFER TO STANDARD 781001.

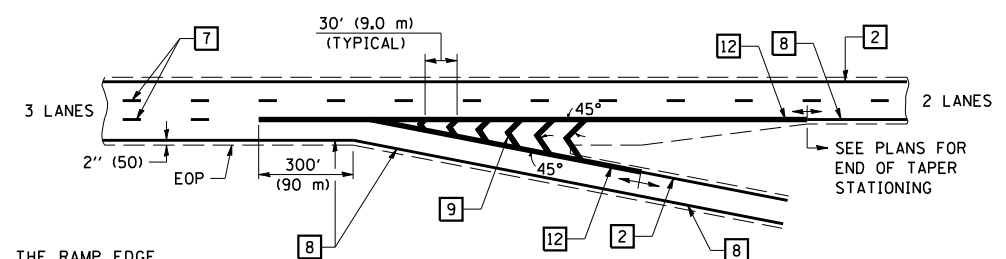
**TYPICAL PAVEMENT MARKING LEGEND**

- |    |                                       |  |
|----|---------------------------------------|--|
| 1  | 4" (100) SKIP-DASH (YELLOW)           |  |
| 2  | 4" (100) SOLID (YELLOW)               |  |
| 3  | 12" (300) DIAGONAL (YELLOW)           |  |
| 4  | 4" (100) DOUBLE YELLOW (NARROW)       |  |
| 5  | 4" (100) DOUBLE YELLOW (WIDE)         |  |
| 6  | RESERVED                              |  |
| 7  | 4" (100) SKIP-DASH (WHITE)            |  |
| 8  | 4" (100) SOLID (WHITE)                |  |
| 9  | 12" (300) DIAGONAL (WHITE)            |  |
| 10 | 6" (150) CROSS WALK (WHITE)           |  |
| 11 | 24" (600) STOP BAR (WHITE)            |  |
| 12 | 8" (200) SOLID (WHITE)                |  |
| 13 | 4" (100) LANE LINE EXTENSIONS (WHITE) |  |
| 14 | RESERVED                              |  |

**ENTRANCE RAMP TERMINAL with EXCLUSIVE LANE**



**EXIT RAMP TERMINAL with EXCLUSIVE (auxiliary) LANE**



WHEN RAMPS ARE SURFACED, THE RAMP EDGE LINES SHALL BE AS SHOWN IN THE PLANS.

	NAME	DATE	REVISIONS	
DESIGNED	P.E.E.	03/89	NAME	DATE
CHECKED	C.T.D.	04/89	D.L.P.	08/97
CADD NO.	F-5.22		K.A.G.	08/04

ALL DIMENSIONS ARE IN INCHES (MILLIMETERS) UNLESS OTHERWISE SHOWN.