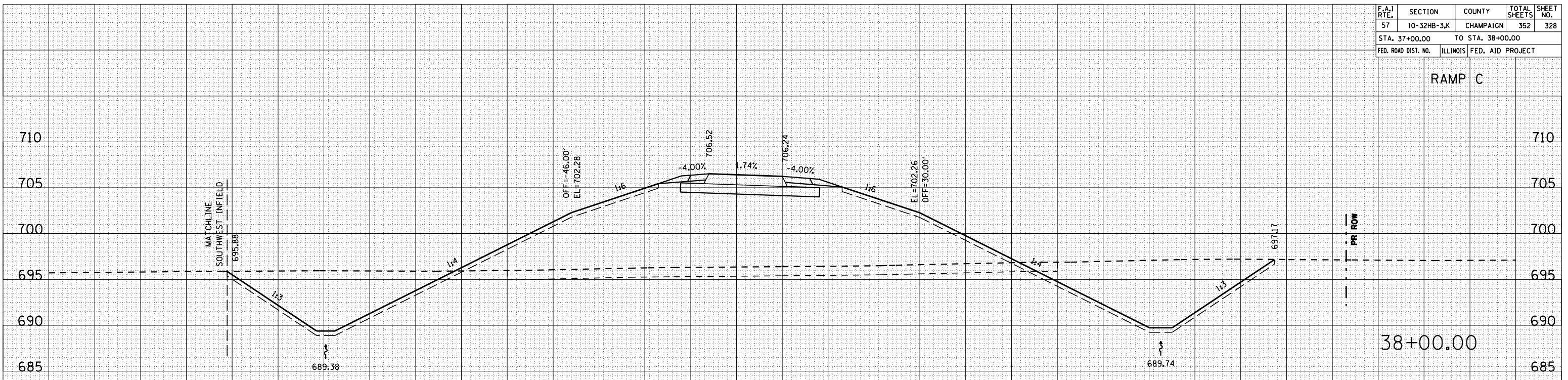


F.A.I. RTE.	SECTION	COUNTY	TOTAL SHEETS	SHEET NO.
57	10-32HB-3,K	CHAMPAIGN	352	328
STA. 37+00.00 TO STA. 38+00.00				
FED. ROAD DIST. NO.		ILLINOIS FED. AID PROJECT		

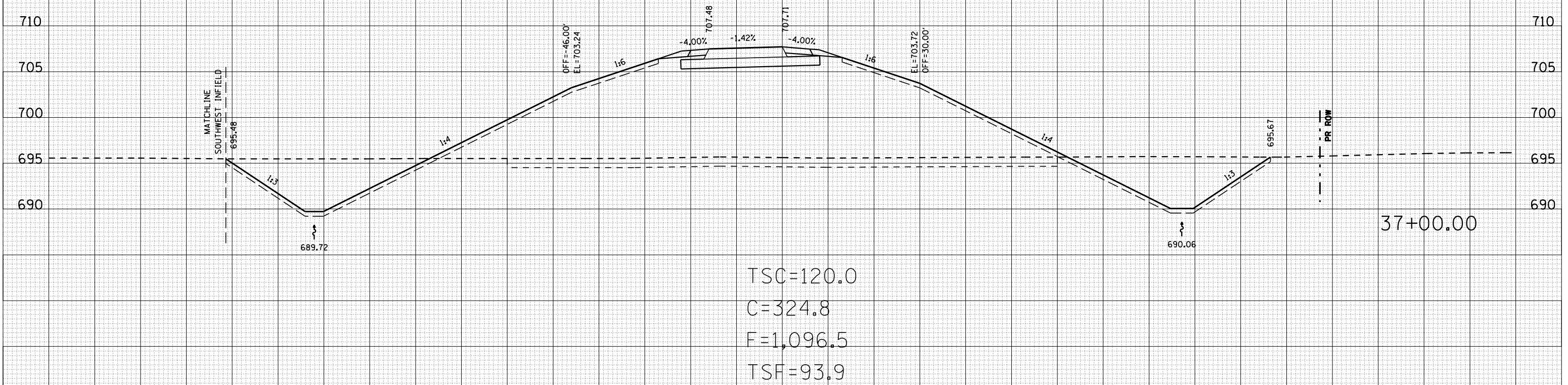
RAMP C

BY	DATE
FINAL SURVEY	SURVEYED
NOTE BOOK	PLOTTED
NO.	AREAS CHECKED



TSC=120.0  
 C=444.8  
 F=836.3  
 TSF=94.2

BY	DATE
ORIGINAL SURVEY	SURVEYED
NOTE BOOK	PLOTTED
NO.	AREAS CHECKED



TSC=120.0  
 C=324.8  
 F=1,096.5  
 TSF=93.9