

ROUTE NO.	SECTION	COUNTY	TOTAL SHEETS	SHEET NO.
FAS 622	04-00077 -01-BR	SANGAMON	22	4

CONTRACT NO. 93414

LEGEND

- ⊗ INDICATES TREE REMOVAL
- ⊕ TEMPORARY DITCH CHECKS
- ⊠ INLET AND PIPE PROTECTION
- ⊞ PERIMETER EROSION BARRIER
- PROPOSED ROW MARKERS
- ▬ STONE RIPRAP DITCH

TEMPORARY EROSION CONTROL

TEMPORARY DITCH CHECKS	5 EACH
INLET AND PIPE PROTECTION	2 EACH
PERIMETER EROSION BARRIER	100 FEET
FURNISHING AND ERECTING ROW MARKERS	8 EACH

EXISTING STRUCTURE NO. 084-3007
STA. 45+35 - SINGLE SPAN STEEL I-BEAM
BRIDGE ON CLOSED TIMBER PILE BENT ABUTS
ONE SPAN AT 35'-6"; 38'-10" BK. TO BK. ABUTS.
28'-4" O. - O. DECK; 24'-0" FC-FC. CURBS
30° SKEW RT. FWD.
REMOVAL OF EXISTING STRUCTURES = 1 EACH

NW 1/4, NW 1/4, SEC 8, T 14 N, R 6 W
CHRIS K. & VIRGINIA E. DILLARD

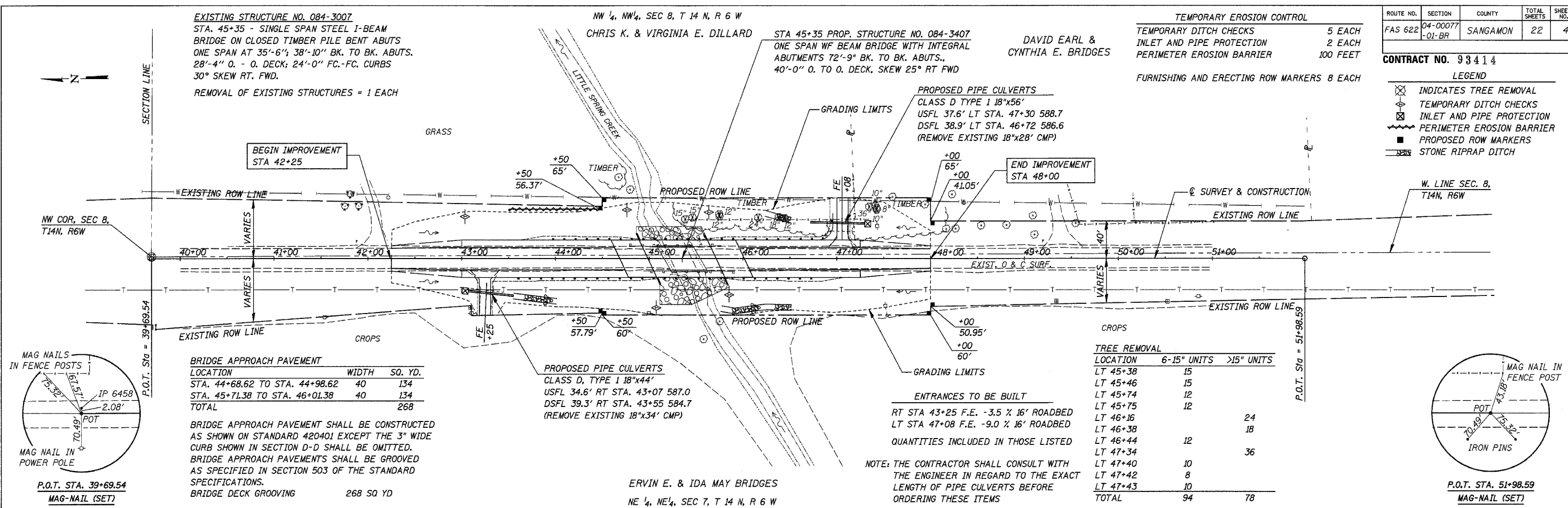
STA 45+35 PROP. STRUCTURE NO. 084-3407
ONE SPAN WF BEAM BRIDGE WITH INTEGRAL
ABUTMENTS 72'-9" BK. TO BK. ABUTS.,
40'-0" O. TO O. DECK, SKEW 25° RT FWD

DAVID EARL &
CYNTHIA E. BRIDGES

PROPOSED PIPE CULVERTS
CLASS D TYPE 1 18"x56'
USFL 37.6' LT STA. 47+30 588.7
DSFL 38.9' RT STA. 46+72 586.6
(REMOVE EXISTING 18"x28' CMP)

PROPOSED PIPE CULVERTS
CLASS D, TYPE 1 18"x44'
USFL 34.6' RT STA. 43+07 587.0
DSFL 39.3' RT STA. 43+55 584.7
(REMOVE EXISTING 18"x34' CMP)

ERVIN E. & IDA MAY BRIDGES
NE 1/4, NE 1/4, SEC 7, T 14 N, R 6 W



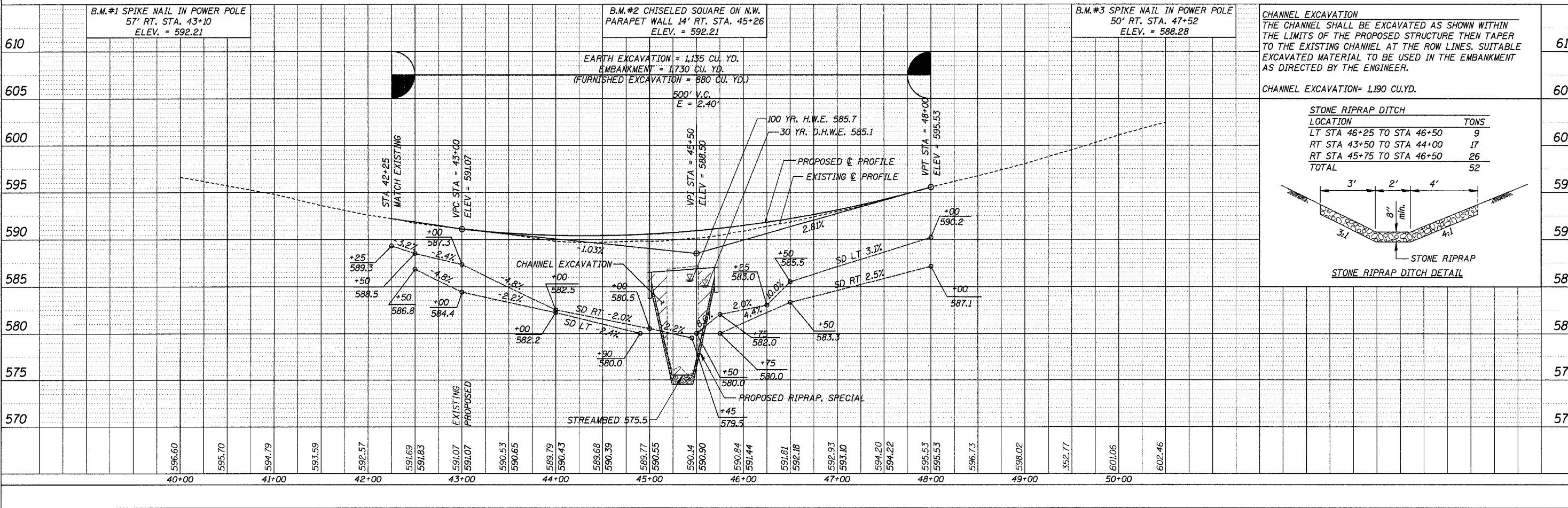
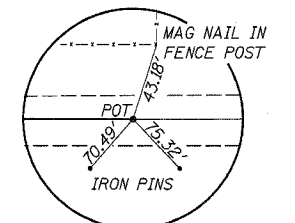
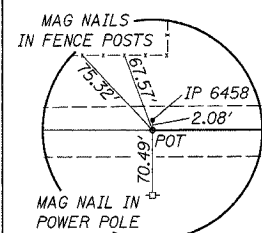
BRIDGE APPROACH PAVEMENT

LOCATION	WIDTH	SQ. YD.
STA. 44+68.62 TO STA. 44+98.62	40	134
STA. 45+71.38 TO STA. 46+01.38	40	134
TOTAL		268

BRIDGE APPROACH PAVEMENT SHALL BE CONSTRUCTED AS SHOWN ON STANDARD 420401 EXCEPT THE 3" WIDE CURB SHOWN IN SECTION D-D SHALL BE OMITTED. BRIDGE APPROACH PAVEMENTS SHALL BE GROOVED AS SPECIFIED IN SECTION 503 OF THE STANDARD SPECIFICATIONS.
BRIDGE DECK GROOVING 268 SQ YD

CROPS

LOCATION	6-15" UNITS	>15" UNITS
LT 45+38	15	
LT 45+46	15	
LT 45+74	12	
LT 45+75	12	
LT 46+16		24
LT 46+38		18
LT 46+44	12	
LT 47+34		36
LT 47+40	10	
LT 47+42	8	
LT 47+43	10	
TOTAL	94	78



STONE RIPRAP DITCH

LOCATION	TONS
LT STA 46+25 TO STA 46+50	9
RT STA 43+50 TO STA 44+00	17
RT STA 45+75 TO STA 46+50	26
TOTAL	52

PLAN

DATE	
BY	
REVIEWED	
DESIGNED	
CHECKED	
IN CHARGE	
NO.	

PROFILE

DATE	
BY	
REVIEWED	
DESIGNED	
CHECKED	
IN CHARGE	
NO.	