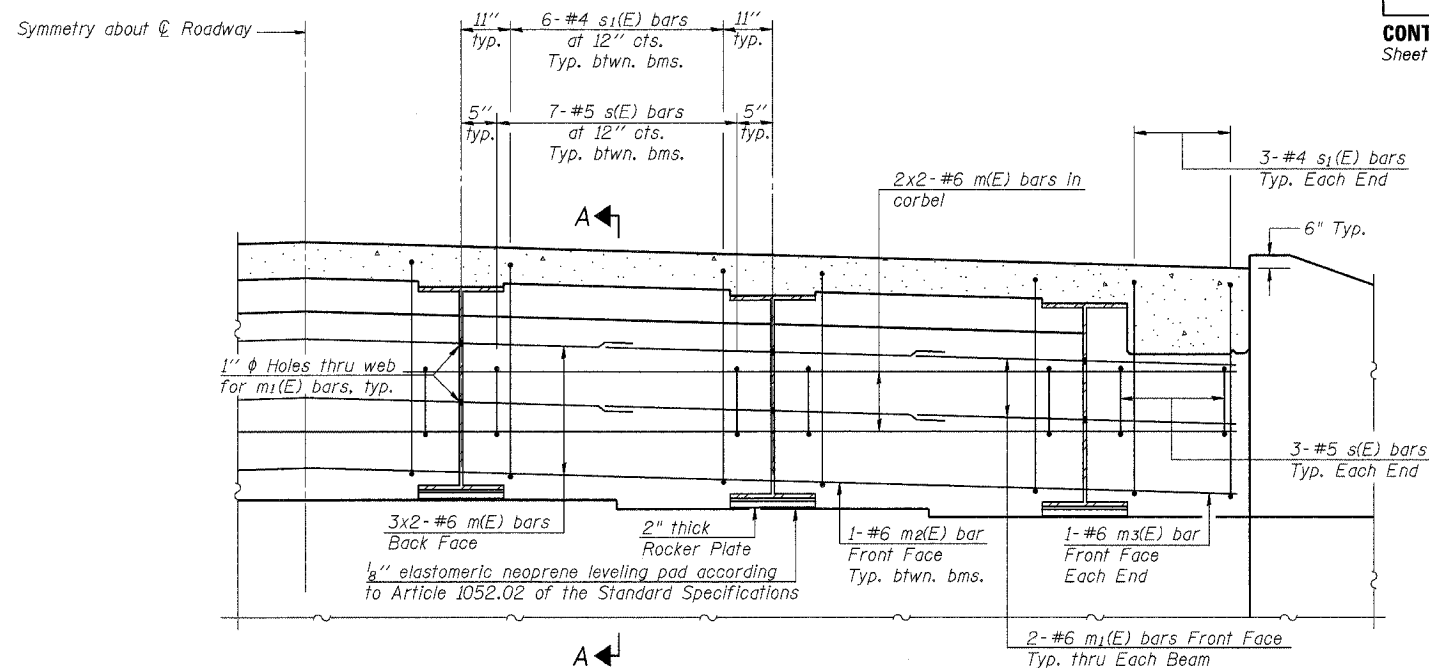


ROUTE NO.	SECTION	COUNTY	TOTAL SHEETS	SHEET NO.
FAS 622	04-00077-01-BR	SANGAMON	22	11
ILLINOIS PROJECT				

CONTRACT NO. 93414
Sheet 6 of 13



DIAPHRAGM ELEVATION AT ABUTMENT

Notes:

Reinforcement bars in diaphragm are billed with superstructure on sheet 5 of 13.

Concrete in diaphragm is included with Concrete Superstructure on sheet 5 of 13.

For details of bars s(E), s1(E) & v(E) see sheet 5 of 13.

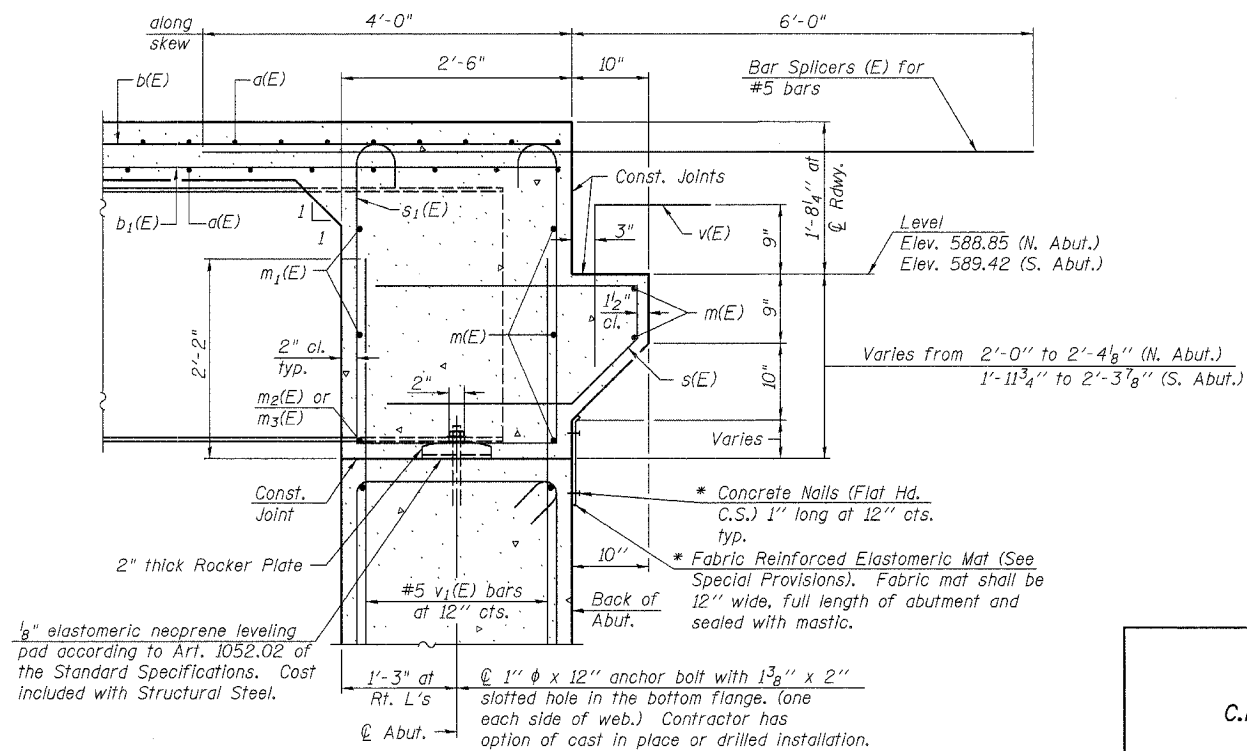
The s(E) and s1(E) bars shall be placed parallel to the beams. Spacing for these bars shall be at right angles to the beams.

For anchor bolt details see sheet 13 of 13.

Bars Indicated thus 3x2 - #6 etc. Indicates 3 lines of bars with 2 lengths per line.

MIN. BAR LAP

#6 bar = 2'-9"



SECTION A-A

Dimensions at right angles to abutment, except as shown.
* Cost included with Concrete Superstructure.

DIAPHRAGM DETAILS

C.H. 15 OVER LITTLE SPRING CREEK
SECTION 04-00077-01-BR
SANGAMON COUNTY
STA. 45+35
S.N. 084-3407

CUMMINS ENGINEERING CORPORATION
JOB #: 2157
FILE: 2157SUPER
DATE: 10/13/05

DESIGNED	Ruben V. Boehler
CHECKED	Tim S. Howard
DRAWN	Tim S. Howard
CHECKED	Michael D. Cummins