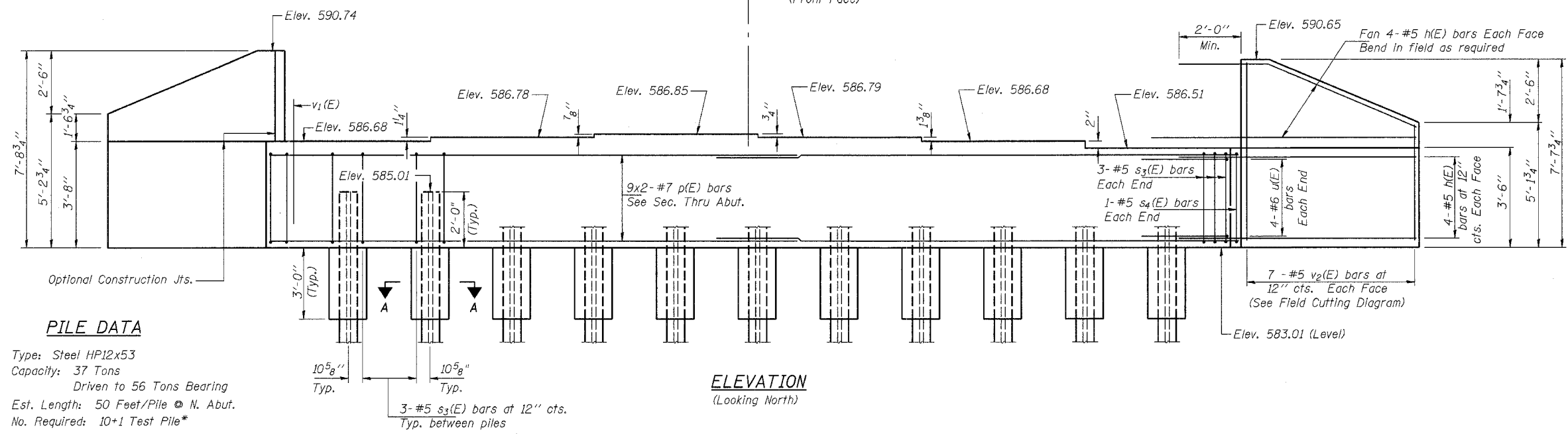


ROUTE NO.	SECTION	COUNTY	TOTAL SHEETS	SHEET NO.
FAS 622	04-00077-01-BR	SANGAMON	22	14
ILLINOIS PROJECT				

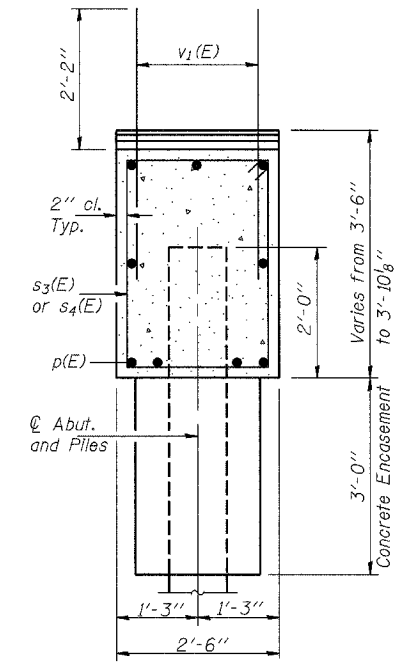
CONTRACT NO. 93414
Sheet 9 of 13

Notes: All edges shall have standard $\frac{3}{4}$ " chamfers unless otherwise noted.
Reinforcement bars designated (E) shall be epoxy coated.
Pour steps monolithically with cap.

MIN. BAR LAP
#7 bar = 3'-5"



ELEVATION
(Looking North)

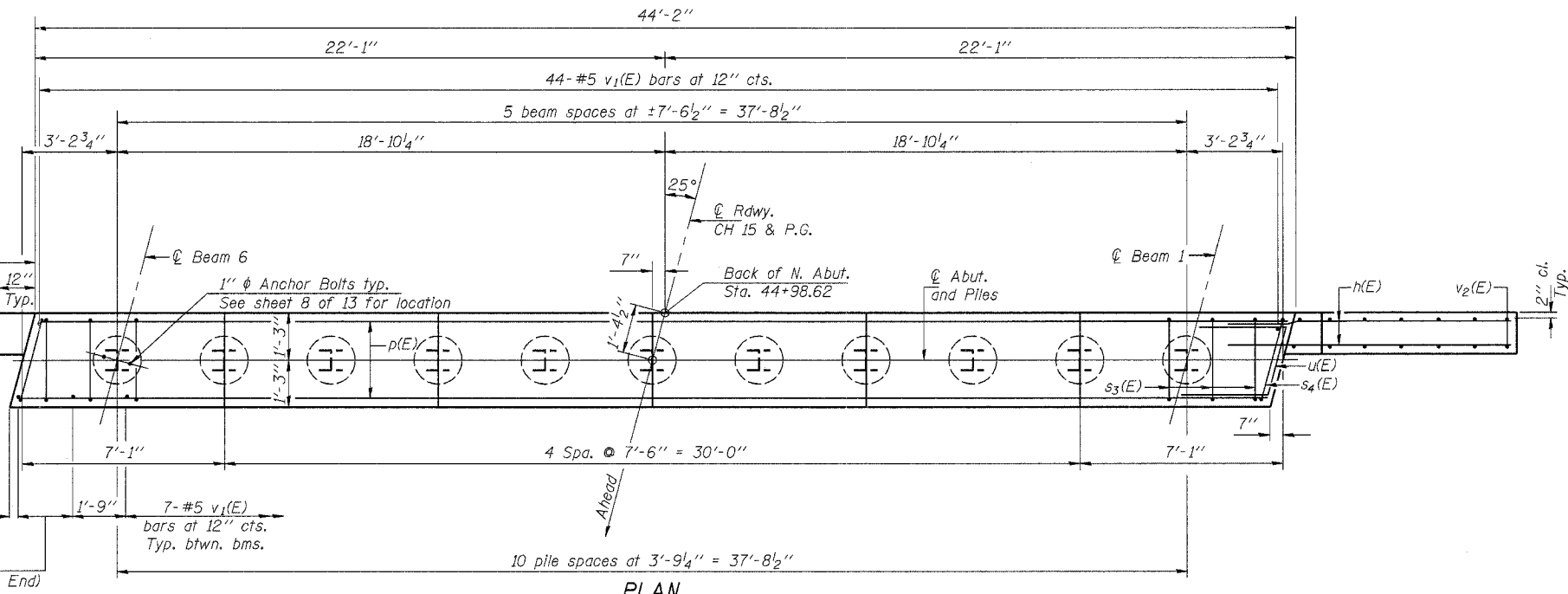


SEC. THRU ABUT.
(@ Rt. & S)

PILE DATA

Type: Steel HP12x53
Capacity: 37 Tons
Driven to 56 Tons Bearing
Est. Length: 50 Feet/Pile @ N. Abut.
No. Required: 10+1 Test Pile*

* Drive Test Piles to Refusal
Est. Length = 70' @ N. Abut.



PLAN

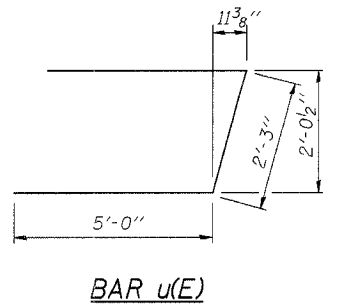
BILL OF MATERIAL-N. ABUT.

Bar	No.	Size	Length	Shape
h(E)	32	#5	8'-11"	—
p(E)	18	#7	23'-8"	—
s3(E)	36	#5	11'-7"	□
s4(E)	2	#5	12'-0"	□
u(E)	8	#6	12'-3"	┌
v1(E)	85	#5	4'-4"	—
v2(E)	14	#5	12'-1"	—
Concrete Structures		Cu. Yd.	18.2	
Reinforcement Bars, Epoxy Coated		Pound	2340	
Structure Excavation		Cu. Yd.	110	
Steel Piles HP12x53		Ft.	500	
Test Pile HP12x53		Each	1	

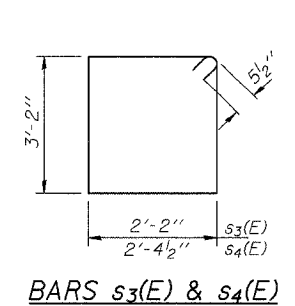
Note: Bars indicated thus 9 x 2-#7 etc. indicates 9 lines of bars with 2 lengths per line.

DESIGNED	Ruben V. Boehler
CHECKED	Tim S. Howard
DRAWN	Tim S. Howard
CHECKED	Michael D. Cummins

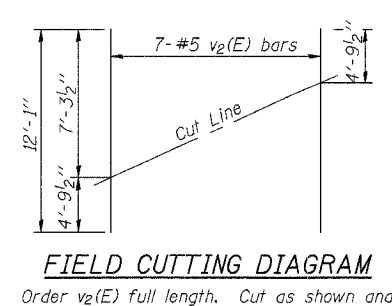
AI-R 10-22-04



BAR u(E)

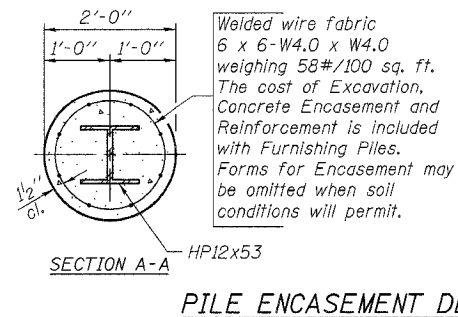


BARS s3(E) & s4(E)



FIELD CUTTING DIAGRAM

Order v2(E) full length. Cut as shown and use remainder of bars in opposite face.



PILE ENCASEMENT DETAIL

NORTH ABUTMENT

C.H. 15 OVER LITTLE SPRING CREEK
SECTION 04-00077-01-BR
SANGAMON COUNTY
STA. 45+35
S.N. 084-3407

CUMMINS ENGINEERING CORPORATION

JOB #:	2157
FILE:	2157ABUTS
DATE:	3/14/06