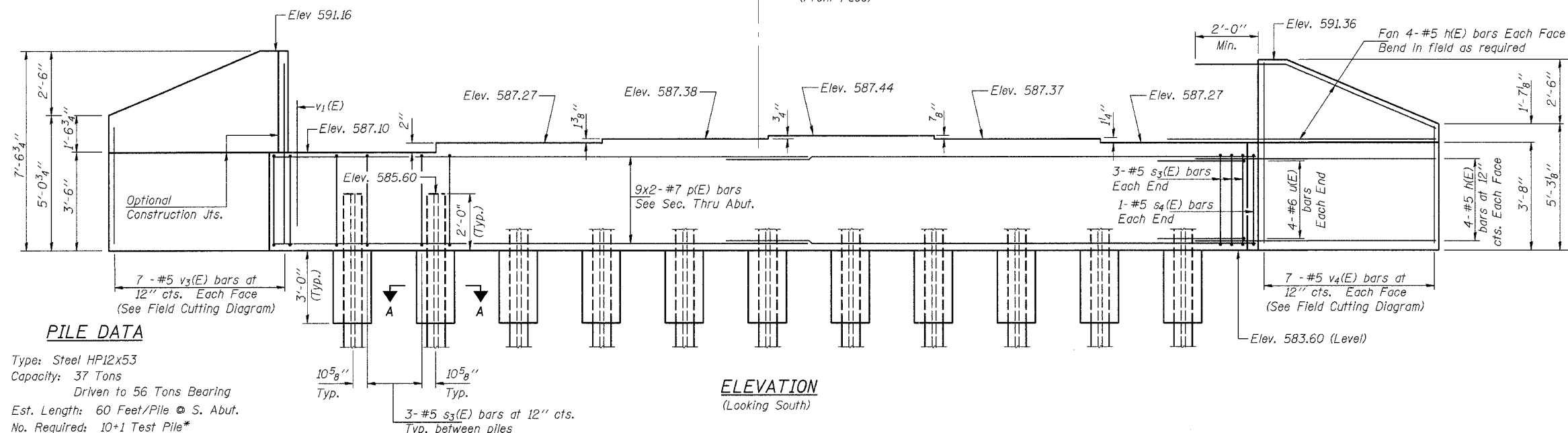


ROUTE NO.	SECTION	COUNTY	TOTAL SHEETS	SHEET NO.
FAS 622	04-00077-01-BR	SANGAMON	22	15
ILLINOIS PROJECT				

CONTRACT NO. 93414
Sheet 10 of 13

Notes: All edges shall have standard 3/4" chamfers unless otherwise noted. Reinforcement bars designated (E) shall be epoxy coated. Four steps monolithically with cap.

MIN. BAR LAP
#7 bar = 3'-5"

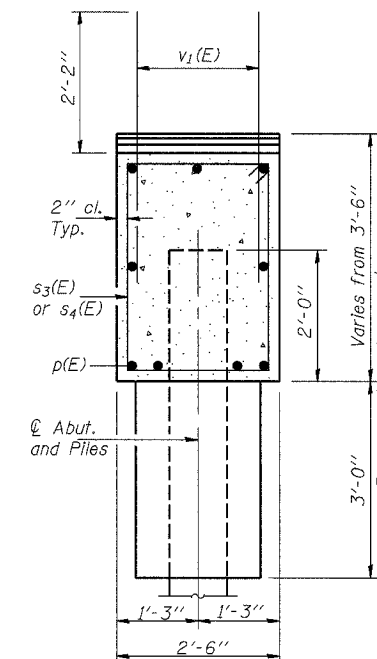


PILE DATA

Type: Steel HP12x53
Capacity: 37 Tons
Driven to 56 Tons Bearing
Est. Length: 60 Feet/Pile @ S. Abut.
No. Required: 10+1 Test Pile*

* Drive Test Piles to Refusal
Est. Length = 100' @ S. Abut.

ELEVATION
(Looking South)



SEC. THRU ABUT.
(@ Rt. Δ's)

BILL OF MATERIAL-S. ABUT.

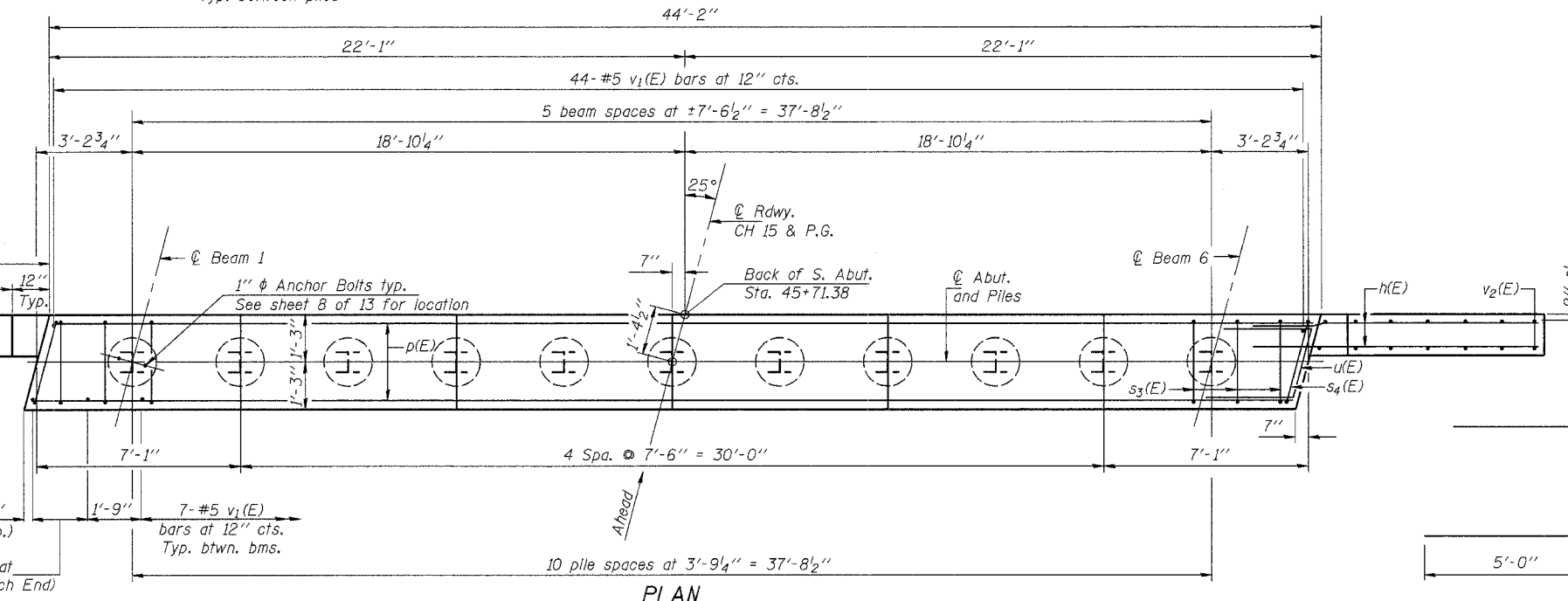
Bar	No.	Size	Length	Shape
h(E)	32	#5	8'-11"	—
p(E)	18	#7	23'-8"	—
s3(E)	36	#5	11'-7"	□
s4(E)	2	#5	12'-0"	□
u(E)	8	#6	12'-3"	┘
v1(E)	85	#5	4'-4"	—
v3(E)	7	#5	11'-11"	—
v4(E)	7	#5	12'-4"	—
Concrete Structures		Cu. Yd.	18.2	
Reinforcement Bars, Epoxy Coated		Pound	2340	
Structure Excavation		Cu. Yd.	110	
Steel Piles HP12x53		Ft.	600	
Test Pile HP12x53		Each	1	

Note: Bars Indicated thus 9 x 2-#7 etc. indicates 9 lines of bars with 2 lengths per line.

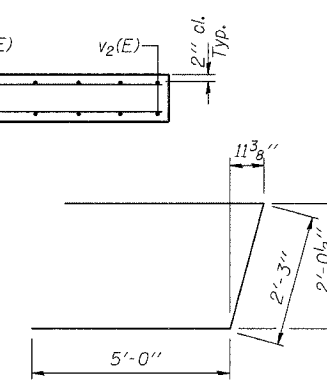
SOUTH ABUTMENT

C.H. 15 OVER LITTLE SPRING CREEK
SECTION 04-00077-01-BR
SANGAMON COUNTY
STA. 45+35
S.N. 084-3407

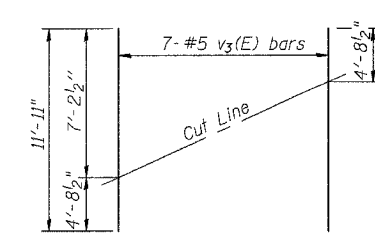
CUMMINS ENGINEERING CORPORATION
JOB #: 2157
FILE: 2157ABUTS
DATE: 10/13/05



PLAN

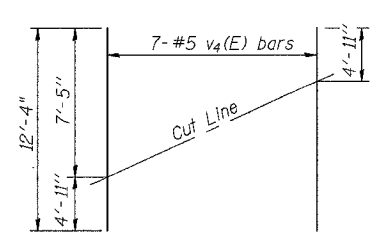


BAR u(E)



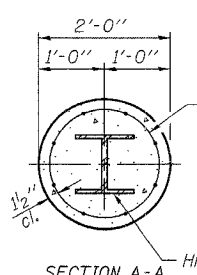
FIELD CUTTING DIAGRAM

Order v3(E) full length. Cut as shown and use remainder of bars in opposite face.



FIELD CUTTING DIAGRAM

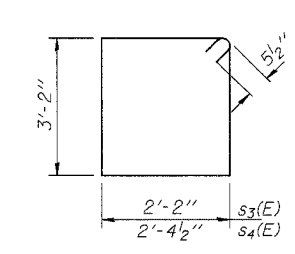
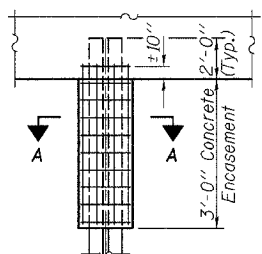
Order v4(E) full length. Cut as shown and use remainder of bars in opposite face.



SECTION A-A
HP12x53

PILE ENCASEMENT DETAIL

Welded wire fabric 6 x 6-W4.0 x W4.0 weighing 58#/100 sq. ft. The cost of Excavation, Concrete Encasement and Reinforcement is included with Furnishing Piles. Forms for Encasement may be omitted when soil conditions will permit.



BARS s3(E) & s4(E)

DESIGNED	Ruben V. Boehler
CHECKED	Tim S. Howard
DRAWN	Tim S. Howard
CHECKED	Michael D. Cummins

AI-R
10-22-04