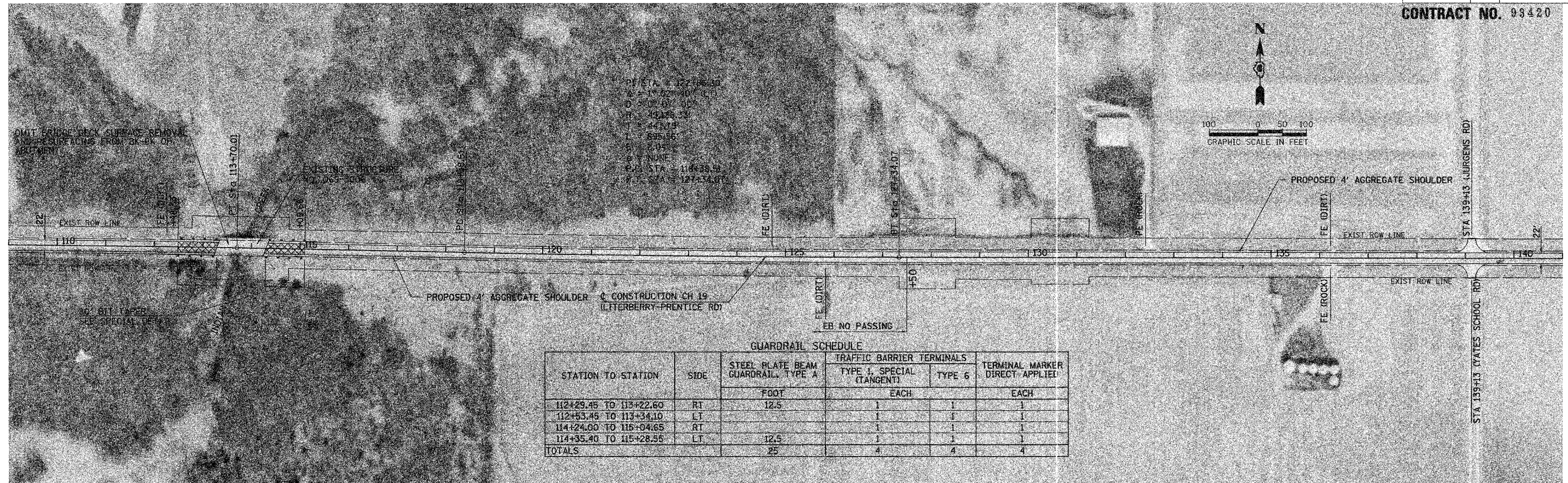


F.A.S. RTE.	SECTION	COUNTY	TOTAL SHEETS	SHEET NO.
611	05-00093-02-RS	MORGAN	8	6
STA.		TO STA.		
FED. ROAD DIST. NO.		ILLINOIS	FED. AID PROJECT	

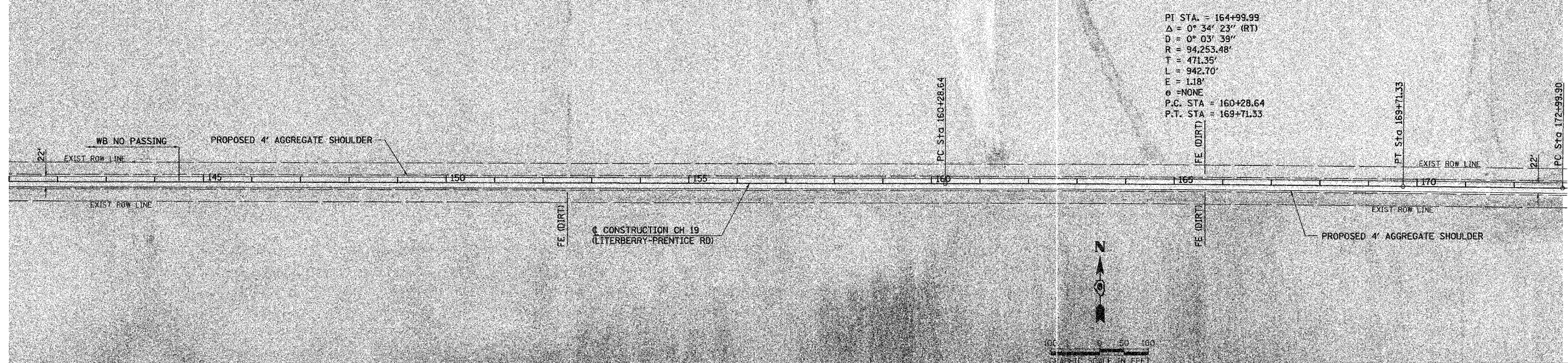
CONTRACT NO. 98420



PT STA = 112+05.30
 $\Delta = 1^\circ 02' 40''$ (RT)
 $D = 0^\circ 07' 30''$
 $R = 43,126.33'$
 $T = 44.113'$
 $L = 895.66'$
 $E = 2.01'$
 $e = \text{NONE}$
 P.C. STA = 113+33.51
 P.T. STA = 127+33.07

GUARDRAIL SCHEDULE

STATION TO STATION	SIDE	STEEL PLATE BEAM GUARDRAIL, TYPE A	TRAFFIC BARRIER TERMINALS		TERMINAL MARKER DIRECT APPLIED
			FOOT	EACH	
112+29.45 TO 113+22.60	RT	12.5	1	1	1
112+53.45 TO 113+34.10	LT		1	1	1
114+24.00 TO 115+04.65	RT		1	1	1
114+35.40 TO 115+28.55	LT	12.5	1	1	1
TOTALS		25	4	4	4



PT STA = 164+99.99
 $\Delta = 0^\circ 34' 23''$ (RT)
 $D = 0^\circ 03' 59''$
 $R = 94,253.48'$
 $T = 471.35'$
 $L = 942.70'$
 $E = 1.18'$
 $e = \text{NONE}$
 P.C. STA = 160+28.64
 P.T. STA = 169+71.33

REVISIONS	
NAME	DATE
JRS	3/20/06

ILLINOIS DEPARTMENT OF TRANSPORTATION
 COUNTY HIGHWAY 19
 PROPOSED PLAN
 STA 109+00 TO STA 173+00
 SCALE: VERT. N/A
 HORIZ. 1"=100'
 DATE 1/31/06
 DRAWN BY JCW
 CHECKED BY JRB