

F.A.I. RTE.	SECTION	COUNTY	TOTAL SHEETS	SHEET NO.
70	(25-3,4)RS-2	EFFINGHAM	25	1

D-97-011-03

STATE OF ILLINOIS  
DEPARTMENT OF TRANSPORTATION  
DIVISION OF HIGHWAYS

**PROPOSED  
HIGHWAY PLANS**

FAI ROUTE 70 (I-70)  
SECTION (25-3,4)RS-2  
PROJECT: IM-070-3(115)096  
EFFINGHAM COUNTY  
INTERSTATE RESURFACING  
C-97-023-03

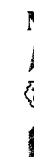
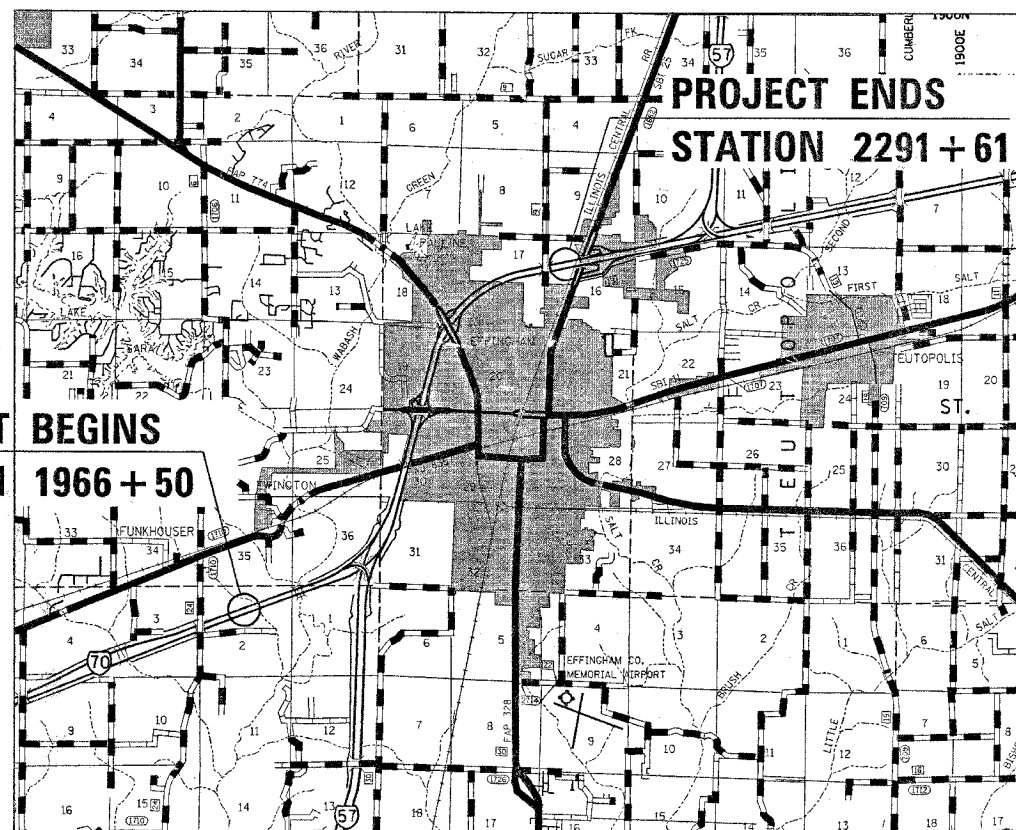
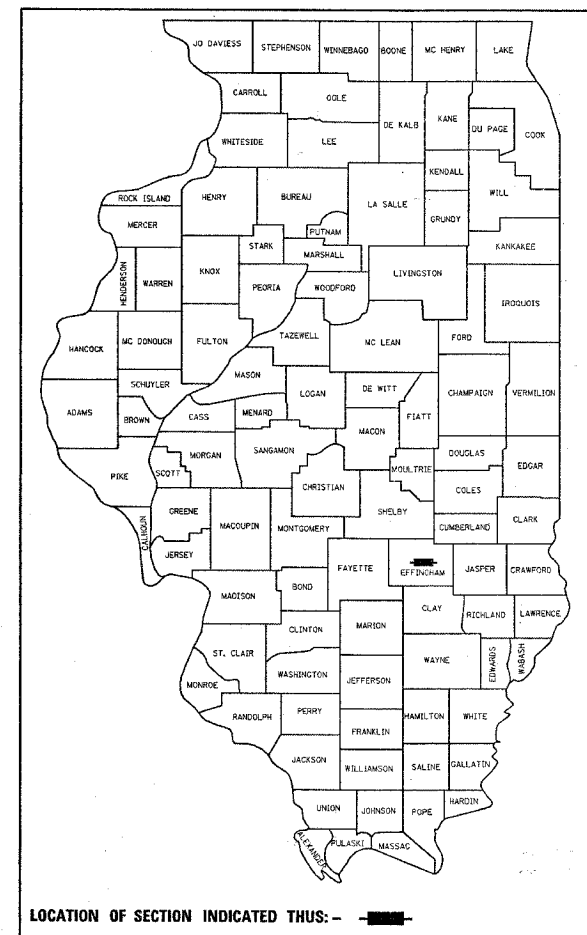
FOR INDEX OF SHEETS, SEE SHEET NO. 2

**STATION EQUATIONS**

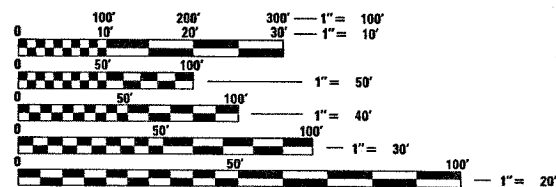
STA. 2092 + 89.56 (BK) = STA. 2090 + 08.88 (AH) EB  
STA. 2090 + 06.84 (BK) = STA. 2090 + 08.88 (AH) WB

**BRIDGE OMISSIONS**

STA. 2001 + 58.87 TO STA. 2005 + 81.12  
STA. 2103 + 44 TO STA. 2121 + 44  
STA. 5028 + 25.67 TO STA. 5030 + 75.54 (RAMP C)



ADT (2005) = 37,900



FULL SIZE PLANS HAVE BEEN PREPARED USING STANDARD ENGINEERING SCALES. REDUCED SIZED PLANS WILL NOT CONFORM TO STANDARD SCALES. IN MAKING MEASUREMENTS ON REDUCED PLANS, THE ABOVE SCALES MAY BE USED.

J.U.L.I.E.  
JOINT UTILITY LOCATION INFORMATION FOR EXCAVATION  
1-800-892-0123

LOCATION MAP  
SCALE: 1" = 1 MILE

GROSS PROJECT LENGTH: 32,511.00 FEET = 6.157 MILES  
NET PROJECT LENGTH: 30,036.84 FEET = 5.689 MILES

PROJECT ENGINEER: MARK DAUCO JERTY  
SQUAD LEADER: JOYCE HEMMEN  
DESIGNER: EVAN RUSSELL  
TELEPHONE: (217) 342-3951 EXT. 313

CONTRACT NO. 94976  
TOWNSHIP: JACKSON, SUMMIT & DOUGLAS

STATE OF ILLINOIS  
DEPARTMENT OF TRANSPORTATION  
DIVISION OF HIGHWAYS

SUBMITTED 3-30-2006  
*Christine M. Reed*  
DEPUTY DIRECTOR OF HIGHWAYS, REGION ENGINEER

May 12, 2006  
*Mike Hine*  
ENGINEER OF DESIGN AND ENVIRONMENT

May 12, 2006  
*Milton R. Seo*  
DIRECTOR OF HIGHWAYS, CHIEF ENGINEER

PRINTED BY THE AUTHORITY  
OF THE STATE OF ILLINOIS