

ROUTE NO.	SECTION	COUNTY	TOTAL SHEETS	SHEET NO.
T.R. 331A	99-04127-00-BR	CLAY	11	1
ROAD DIST.		ILLINOIS	HARTER	

CONTRACT NO. 95454

# STATE OF ILLINOIS DEPARTMENT OF TRANSPORTATION DIVISION OF HIGHWAYS PLANS FOR PROPOSED BRIDGE REPLACEMENT AND REHABILITATION PROGRAM

**HARTER ROAD DISTRICT  
SECTION 99-04127-00-BR  
CLAY COUNTY  
PROJECT NO. BROS-25(52)  
T.R. 331A  
C-97-051-05**

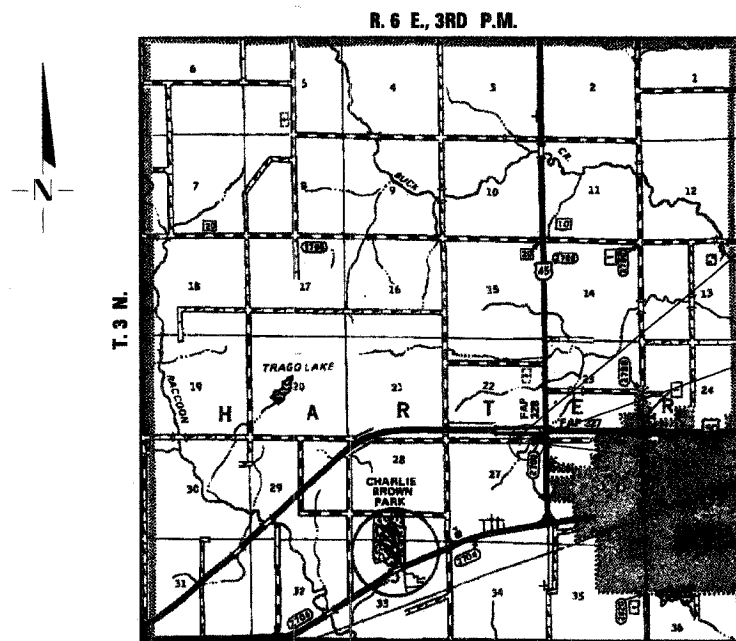
INDEX OF SHEETS	
SHEET NO.	TITLE
1.	COVER SHEET
2.	SUMMARY OF QUANTITIES, GENERAL NOTES & TYPICAL SECTIONS
3.	PLAN AND PROFILE SHEET
4.-7.	BRIDGE PLANS
8.-11.	STATION CROSS SECTIONS

**STANDARDS:**

280001-02	TEMPORARY EROSION CONTROL SYSTEMS
515001-02	NAME PLATE FOR BRIDGES
631026-02	TRAFFIC BARRIER TERMINAL, TYPE 5 & 5A
635006-02	REFLECTOR AND TERMINAL MARKER PLACEMENT
702001-06	TRAFFIC CONTROL DEVICES
BLR 21-6	TYPICAL APPLICATION OF TRAFFIC CONTROL DEVICES FOR CONSTRUCTION ON RURAL LOCAL HIGHWAYS
BLR 24-1	MAILBOX TURNOUT FOR LOCAL ROADS

**SCALES**

PLAN	0' 50' 100'
PROFILE HORIZ.	0' 50' 100'
PROFILE VERT.	0' 5' 10'
CROSS SECTIONS	0' 5' 10'



**LOCATION PLAN**

GROSS LENGTH OF SECTION = 450 FEET = 0.085 MILES  
NET LENGTH OF SECTION = 450 FEET = 0.085 MILES



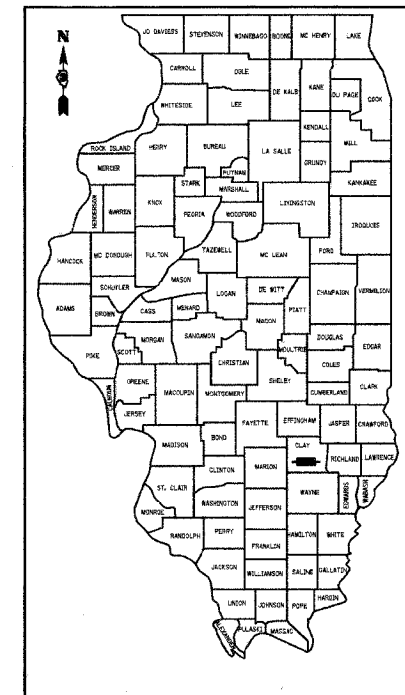
IMPROVEMENT BEGINS  
STA. 47 + 75

STA. 50 + 00 - SPECIAL BRIDGE DESIGN  
PRECAST PRESTRESSED CONCRETE DECK  
BEAM BRIDGE, SINGLE SPAN @ 41'-8",  
24'-0" ROADWAY, 0° SKEW  
EXISTING S.N. 013-3114  
PROPOSED S.N. 013-3227

IMPROVEMENT ENDS  
STA. 52 + 25



*Fred J. Stone Jr. (3.20-06)*  
ILLINOIS PROFESSIONAL NO. 26065  
EXPIRES 11-30-07



LOCATION OF SECTION INDICATED THUS:   
CLASSIFICATION: RURAL TWO-LANE LOCAL ROADS  
DESIGN VOLUME: UNDER 250 ADT  
CURRENT ADT: 110 (2005)  
DESIGN SPEED: 30 MPH

PASSED	<u>3/23</u>	20 <u>06</u>
	<i>John Williams</i>	ROAD DISTRICT COMMISSIONER
APPROVED	<u>March 23</u>	20 <u>06</u>
	<i>J.T.D.</i>	COUNTY ENGINEER
PASSED	<u>4/19</u>	20 <u>06</u>
	<i>Maureen Elwell</i>	DISTRICT SEVEN ENGINEER OF LOCAL ROADS & STREETS
RELEASED FOR BID BASED ON LIMITED REVIEW	<u>4/10</u>	20 <u>06</u>
	<i>Christa M. Reed</i>	DEPUTY DIRECTOR OF HIGHWAYS, REGION FOUR ENGINEER
STATE OF ILLINOIS DEPARTMENT OF TRANSPORTATION		

TOLL FREE JOINT UTILITY LOCATING  
INFORMATION FOR EXCAVATORS (J.U.L.I.E.)  
TELEPHONE NUMBER 1-800-892-0123

4440 ASH GROVE  
SPRINGFIELD, IL 62711  
(217) 793-8600  
oasinc@insightbb.com

**OZYURT AND STONE, INC.**  
CONSULTING ENGINEERS