

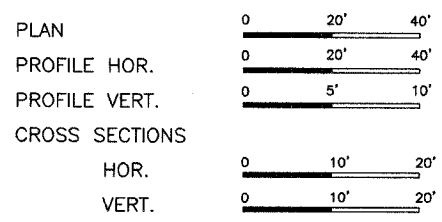
|                    |                |          |                      |           |
|--------------------|----------------|----------|----------------------|-----------|
| ROUTE              | SECTION        | COUNTY   | TOTAL SHEETS         | SHEET NO. |
| F.A.S. 801         | 03-00110-00-BR | RICHLAND | 13                   | 1         |
| CONTRACT NO. 95456 |                | ILLINOIS | PROJECT BRS-801(228) |           |

STATE OF ILLINOIS  
DEPARTMENT OF TRANSPORTATION  
DIVISION OF HIGHWAYS  
PLANS FOR PROPOSED  
BRIDGE REPLACEMENT & REHABILITATION PROGRAM  
SECTION 03-00110-00-BR RICHLAND COUNTY  
PROJECT BRS-801(228)  
JOB NO. C-97-045-06  
F.A.S. 801

Joint Utility Locating Information for Excavators  
JULIE 1-800-892-0123

INDEX OF SHEETS

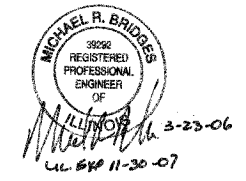
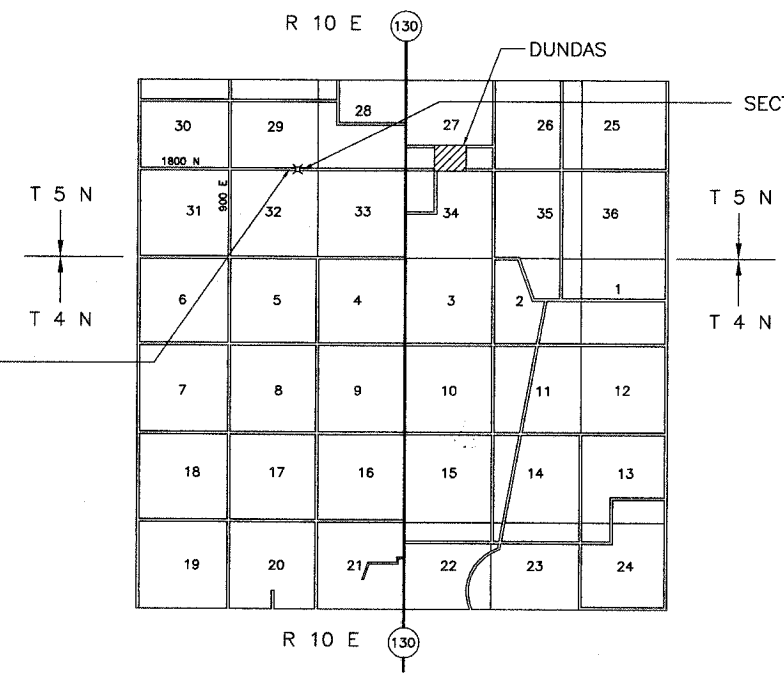
| SHEET | ITEM                       |
|-------|----------------------------|
| 1     | COVER SHEET                |
| 2     | SUMMARY OF QUANTITIES      |
| 3     | ROADWAY PLAN AND PROFILE   |
| 4     | GENERAL PLAN AND ELEVATION |
| 5     | STANDARD CS-2827-60        |
| 6     | STANDARD CB-2827-48        |
| 7     | STANDARD CA-2827-10        |
| 8     | STANDARD CP-2827-10        |
| 9     | STANDARD CR-TS1            |
| 10    | STANDARD CN                |
| 11    | STANDARD CX-1              |
| 12-13 | CROSS SECTIONS             |



- STANDARD DRAWINGS
- STANDARD 000001-04
  - STANDARD 280001-02
  - STANDARD 630001-06
  - STANDARD 631026-02
  - STANDARD 702001-06
  - STANDARD BLR 21-6
  - STANDARD BLR 22-4
  - STANDARD BLR 23-1

SECTION 03-00110-00-BR BEGINS STA. 1+35.00

THREE SPAN PRECAST PRESTRESSED CONCRETE DECK BEAM BRIDGE  
18'1"-6" BK - BK ABUTMENTS  
STEEL PILE SPILLTHROUGH ABUTMENTS  
STEEL PILE PIERS  
28' DECK  
EXISTING STRUCTURE NO. 080-3007  
PROPOSED STRUCTURE NO. 080-3210



CHARLESTON ENGINEERING INC.  
105 N. KITCHELL  
P.O. BOX 397  
OLNEY, ILLINOIS 62450  
PH. 618-392-0736

APPROVED March 23 2006  
Danny J. Colwell  
COUNTY ENGINEER

PASSED 3/29 2006  
Marwan El-Cest  
DISTRICT SEVEN ENGINEER OF  
LOCAL ROADS AND STREETS

Releasing For Bid Based on Limited Review  
3/29 2006  
Charles M. Peard  
DEPUTY DIRECTOR OF HIGHWAYS  
REGION FOUR ENGINEER

STATE OF ILLINOIS  
DEPARTMENT OF TRANSPORTATION

RURAL MAJOR COLLECTOR  
ADT = 750  
DESIGN SPEED = 50 M.P.H.

CONTRACT NO. 95456

NET LENGTH SECTION 03-00110-00-BR = 330.00 Ft. = 0.062 Mi.