

T.R.	SECTION	COUNTY	TOTAL SHEETS	SHEET NO.
56	03-06114-00-BR	EDWARDS	13	2
FED. ROAD DIST. NO. 7		ILLINOIS	FED. AID PROJECT	
PROJECT# BROS-047(25)		CONTRACT# 95459		
JOB NO. C-97-048-06		BUTTER CREEK TRIBUTARY		
LEC JOB # W31010ED				

323 W. 3RD ST.  
P.O. BOX 160  
MT. CARMEL, IL  
62863  
PHONE:  
(618)-262-8651  
FAX:  
(618)-263-3327

405 W. STATE ST  
SUITE 1  
PRINCETON, IN  
47170  
PHONE:  
(812)-386-7611  
FAX:  
(812)-385-2812

**GENERAL NOTES:**

THIS SECTION SHALL BE CONSTRUCTED IN ACCORDANCE WITH THE PLANS, SPECIAL PROVISIONS AND "STANDARD SPECIFICATIONS FOR ROAD AND BRIDGE CONSTRUCTION", ADOPTED JANUARY 1, 2002.

THE WORK INVOLVED ON THIS SECTION CONSISTS OF THE REMOVAL OF THE EXISTING STRUCTURE, THE CONSTRUCTION OF A 60 FOOT LONG SINGLE SPAN PRECAST, PRESTRESSED CONCRETE DECK BEAM BRIDGE, EARTH APPROACHES, AGGREGATE SURFACE COURSE AND OTHER MISCELLANEOUS ITEMS NECESSARY TO COMPLETE THIS SECTION.

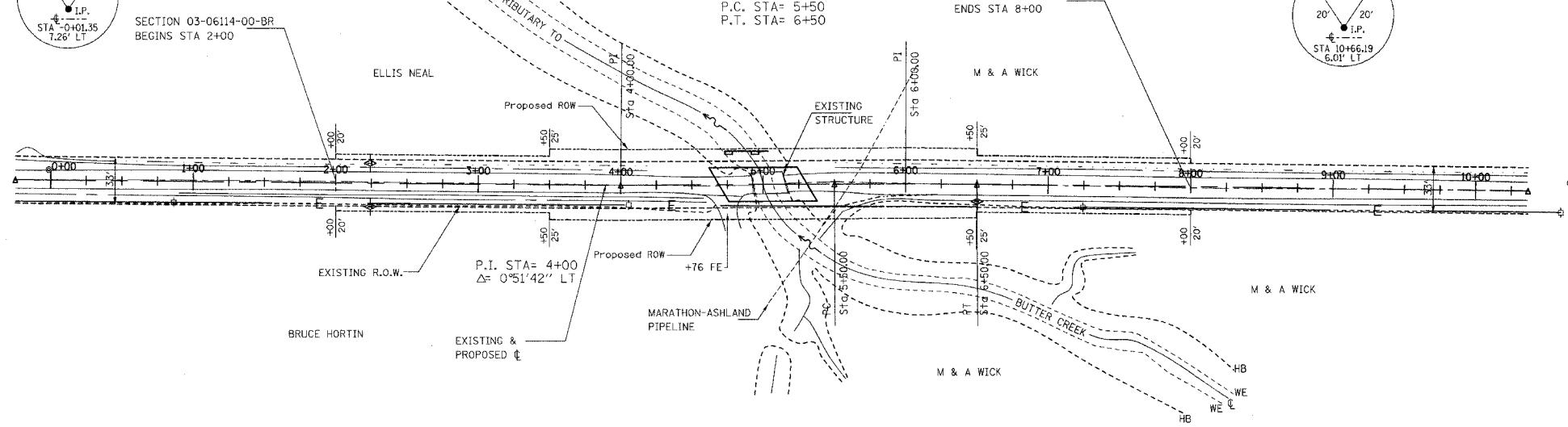
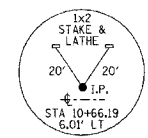
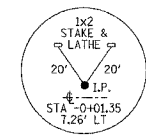
ALL ELEVATIONS ARE BASED ON U.S.G.S. MEAN SEA LEVEL DATUM.

IT SHALL BE THE CONTRACTOR'S RESPONSIBILITY TO CONTACT ALL THE UTILITIES, AFFECTING THE PROJECT, PRIOR TO CONSTRUCTION.

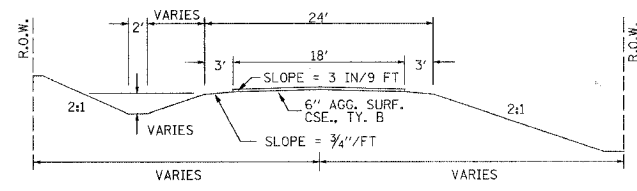
THE CONTRACTOR SHALL CONTACT FRANK PAYNE AT MARATHON PIPE LINE AT LEAST 3 WORKING DAYS BEFORE PILES ARE DRIVEN OR ANY CONSTRUCTION ACTIVITIES WITHIN 50 FEET OF THE MARATHON-ASHLAND PIPELINE, SO MARATHON PIPE LINE MAY HAVE A REPRESENTATIVE AT THE WORK SITE.

NOTE: CONSTRUCTION TRANSITIONS  
STA 2 + 00 TO STA 2 + 15  
STA 7 + 75 TO STA 8 + 00  
ALL QUANTITIES ARE INCLUDED IN THE PROPOSAL

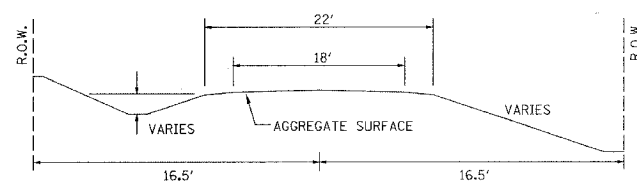
CURVE #1  
P.I. STA= 6+00  
Δ= 01°02'48"  
D= 01°02'48"  
R= 5474.23'  
T= 50'  
L= 100'  
E= 0.23'  
T.R.=  
S.E. RUN=  
P.C. STA= 5+50  
P.T. STA= 6+50



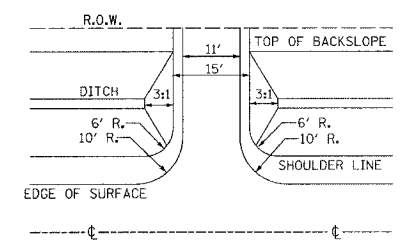
**TYPICAL CROSS SECTION PROPOSED**



**TYPICAL CROSS SECTION EXISTING**



**FIELD ENTRANCE DETAIL**



**UTILITIES:**

JUL.T.E. 1-800-892-0123  
WAYNE-WHITE ELECTRIC CO-OP  
ROUTE 45 WEST  
FAIRFIELD, IL 62837  
618-842-2196

MARATHON PIPE LINE  
MR. FRANK PAYNE  
618-432-7223, EXT. 227

MARATHON/ASHLAND PIPE  
LINE, LLC  
419-421-3031

NOTE: CONSTRUCT SPECIAL DITCH

STA 2+00 TO STA 4+18 LT  
STA 2+00 TO STA 4+62 RT  
STA 6+00 TO STA 8+00 LT  
STA 5+50 TO STA 8+00 RT

NOTE: CONSTRUCT STONE RIPRAP DITCH

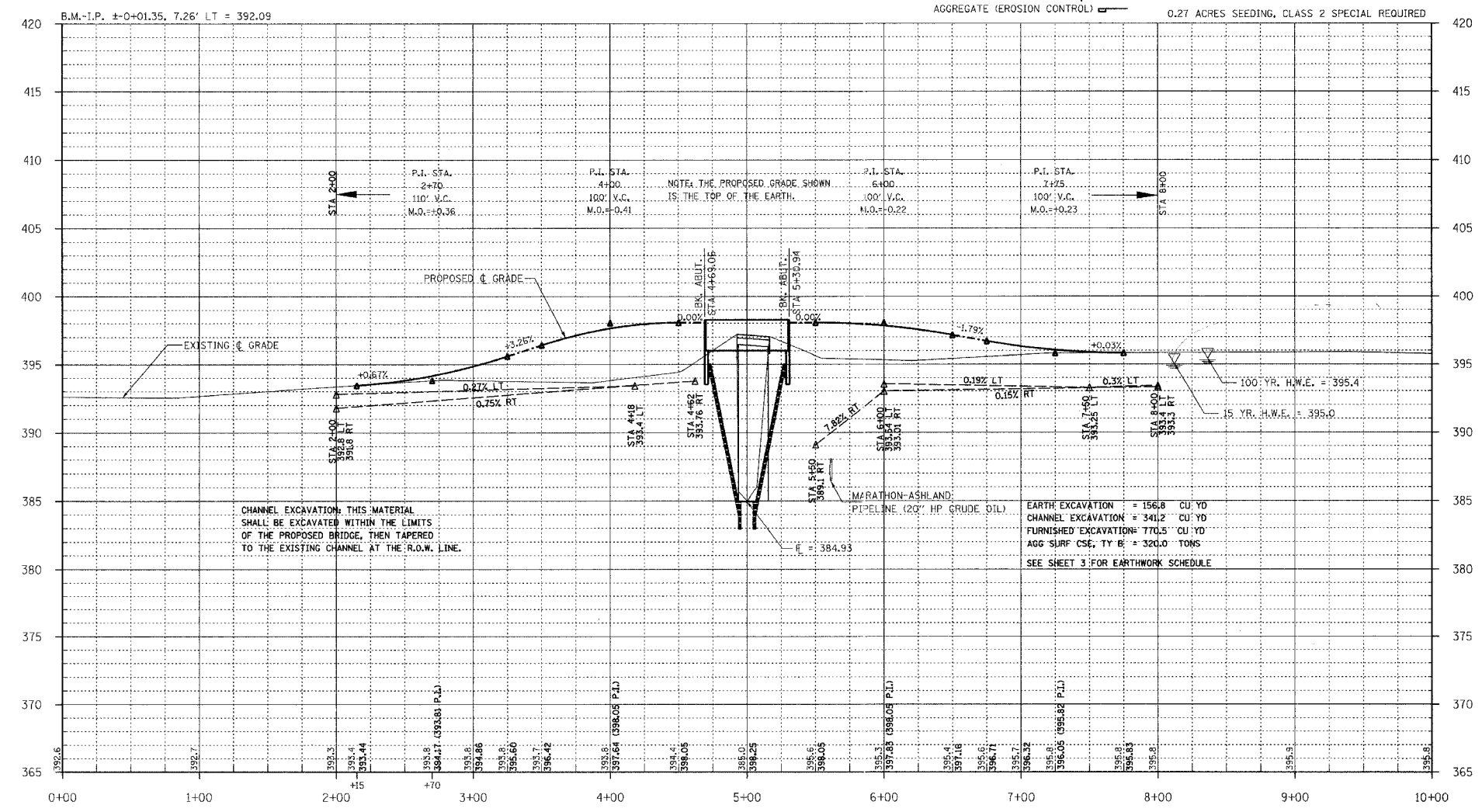
STA 5+50 TO STA 6+00 RT (0.48 TON/LIN FT)  
24 TON STONE RIPRAP DITCH ALLOWED IN PROPOSAL.  
SEE SHEET NO. 13 FOR STONE RIPRAP DITCH DETAIL.

EXISTING BRIDGE STA 5+04.48; STRUCTURE NUMBER: 024-3088  
A 23' LONG BRIDGE WITH A 3" THICK WOODEN DECK ON 14-3"x6" I BEAMS AND WOODEN ABUTMENTS WITH WINGWALLS.

ONE (1) EACH-REMOVAL OF EXISTING STRUCTURES ALLOWED IN THIS PROPOSAL.

PROPOSED STRUCTURE: NO. 024-3132, STA 5+00,  
A 60' LONG SINGLE SPAN P.P.C.D.B. BRIDGE WITH 27" DEPTH BEAMS, SPILL THROUGH TYPE ABUTMENTS, 24' WIDTH, 30° RT FWD SKEW.

SEE SHEETS 5-12 FOR THE DESIGN AND BILL OF MATERIALS.

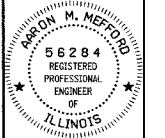


CHANNEL EXCAVATION: THIS MATERIAL SHALL BE EXCAVATED WITHIN THE LIMITS OF THE PROPOSED BRIDGE, THEN TAPERED TO THE EXISTING CHANNEL AT THE R.O.W. LINE.

EARTH EXCAVATION = 156.8 CU YD  
CHANNEL EXCAVATION = 341.2 CU YD  
FURNISHED EXCAVATION = 770.5 CU YD  
AGG SURF CSE, TY B = 320.0 TONS  
SEE SHEET 3 FOR EARTHWORK SCHEDULE



PROFESSIONAL DESIGN FIRM  
LAND SURVEY & PROFESSIONAL ENGINEERING CORPORATION  
184-000887  
(62-032435)(35-002769)



AARON M. MEFFORD  
NAME  
Signature  
2-8-06  
DATE  
11-30-07  
EXPIRES

TOWNSHIP ROUTE 56  
BUTTER CREEK TRIBUTARY  
EDWARDS COUNTY, ILLINOIS

SHEET TITLE:

PLAN & PROFILE

SCALE: VARS  
BY: AMM  
DATE: 2006  
REV:

2 OF 13 SHEETS

SHEET NO. 2